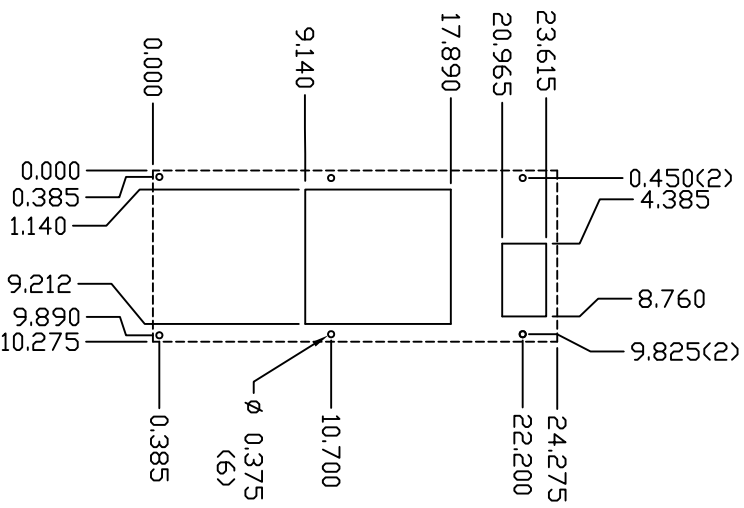
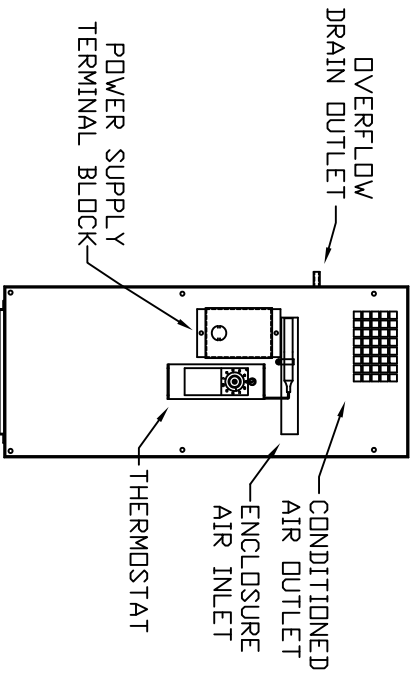




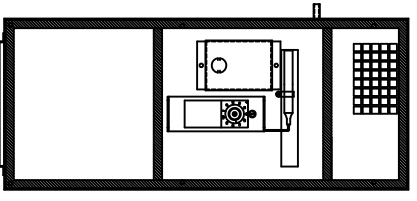
HAZARDOUS LOCATION  
IQ2000TXS, IQ2500TXS  
CUTOUT DRAWING



IQ2000TXS  
IQ2500TXS  
BOTTOM VIEW



HAZARDOUS LOCATION  
IQ2000TXS, IQ2500TXS  
GASKET DRAWING



**\*IMPORTANT\***  
GASKET MUST BE  
APPLIED AS SHOWN  
FOR PROPER OPERATION  
AND TO MAINTAIN  
NEMA INTEGRITY

HAZARDOUS LOCATION CERTIFICATIONS

UL/ETL: CLASS 1 DIVISION 2 GROUPS B, C & D  
ETL: CLASS 1 ZONE 2 GROUP IIB  
TEMPERATURE CODE:

UL: T4  
ETL: T3

REV	DESCRIPTION	DATE	CHECKED
6	UPDATED CONDITIONED AIR OUTLET	12-9-11	JHM
5	8250 REF VAS 6746 REF	9-20-11	JHM
4	ADDED UL/ETL CERTIFICATIONS & TEMP CODES	1-17-11	JHM
3	UPDATE MAX OPERATING TEMPS	7-12-10	JHM
2	UPDATE VIEWING THERMOSTAT	3-18-10	JHM
1	INITIAL RELEASE	7-22-09	JHM
0	REVISIONS		

PROPRIETARY DRAWING  
DATE: 7-24-09  
SHEET 1 OF 2

IQ20-2500TXS  
IQ280703

6