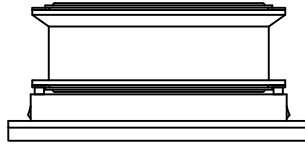


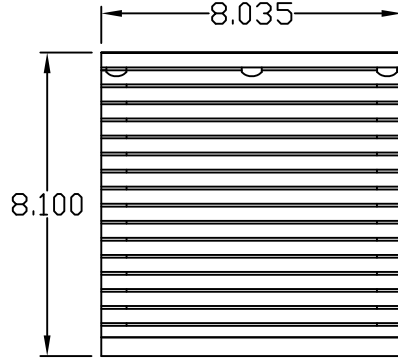
IQ200FPP SPEC DRAWING

235/190 CFM FREE AIR @ 120/110 VAC 60/50 HZ
 235/190 CFM FREE AIR @ 230/220 VAC 60/50 HZ
 MAXIMUM AMPS : .35/.39 @ 120/110 VAC 60/50 HZ
 MAXIMUM AMPS : .17/.19 @ 230/ 220 VAC 60/50 HZ
 MAXIMUM OPERATING TEMPERATURE : 176°F
 WEIGHT: 3.5 LBS

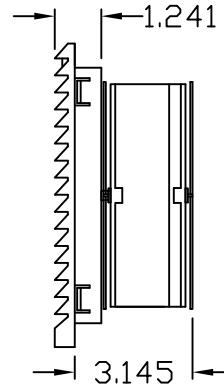
TOP



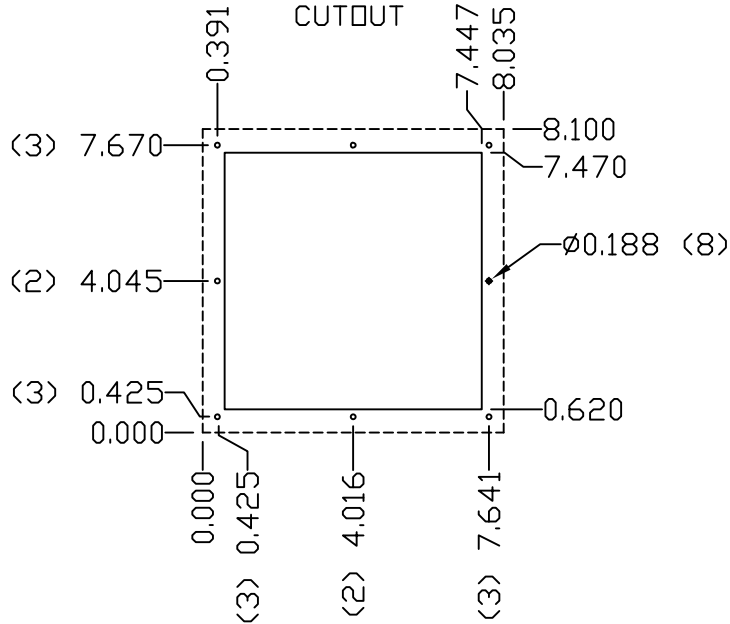
FRONT



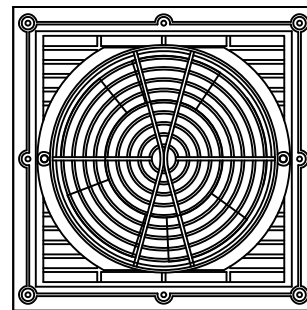
RIGHT SIDE



IQ200FPP
CUTOUT



IQ200FPP
REAR VIEW



REV	DESCRIPTION	DATE	CHECKED
3	UPDATED SPEC	2-10-10	JMH
2	UPDATED OVERALL SIZE	3-30-09	JMH
1	UPDATED SPEC	11-14-08	JMH
0	INITIAL RELEASE	8-7-08	JMH

PROPRIETARY DRAWING
 THIS DRAWING IS THE PROPERTY OF ICE
 GEAR, INC. AND IS NOT TO BE REPLICATED
 OR ALTERED WITHOUT AUTHORIZATION OF
 ICE GEAR, INC.

DRAWN	JMH	SCALE	NONE
DATE	8-6-08		
SHEET 1 OF 1			

		<small>INDUSTRIAL COLLIER EQUIPMENT 346 MILLER AVENUE MCCONNERSVILLE, PA 17036 717-857-8804 • 1-800-967-8854 FAX 717-857-8285</small>	
PART NAME		IQ200FPP	
DWG NO	IQ280809	REV	3