

IQ2500V  
 COOLING CAPACITY: 2500 BTUH (733W) @131°F (55°C)  
 MAXIMUM AMPS: 1.7 (816W) @480V/60HZ  
 MAXIMUM OPERATING TEMP: 131°F (55°C)  
 DIMENSIONS: 32.53" (826MM) H X 19.31" (490MM) W X 6.41" (163MM) D  
 WEIGHT: 109 LBS (49.5KG)

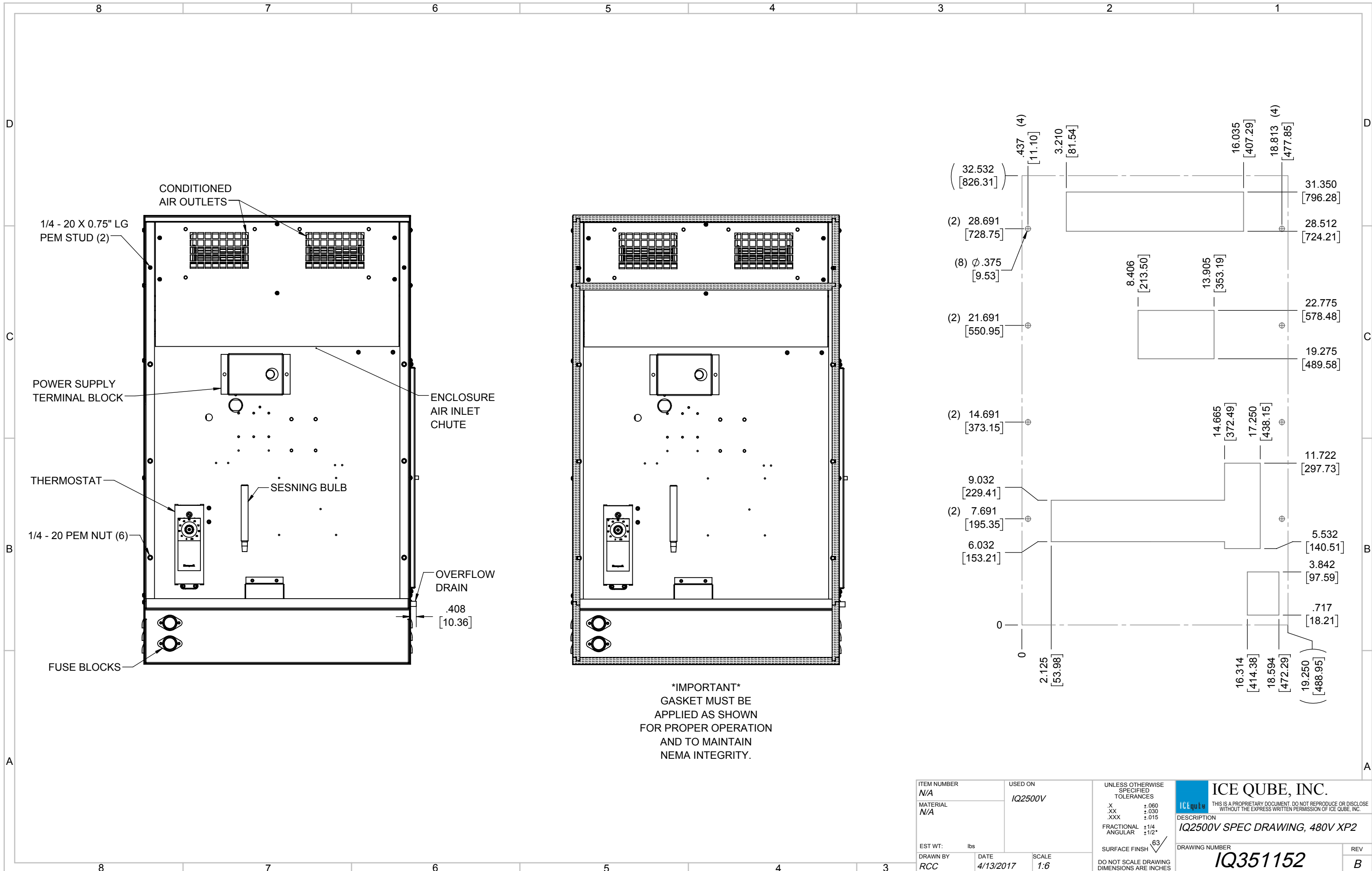
B	ADDED WATTAGE INFO	RCC	1/3/2018				
A	REDRAWN IN SW	RCC	4/13/2017				
REV	REVISION	CHG	DATE	APP	DATE	CN#	

ITEM NUMBER	N/A
MATERIAL	N/A
EST WT:	lbs
DRAWN BY	RCC

USED ON	IQ2500V
DATE	4/13/2017
SCALE	1:8

UNLESS OTHERWISE SPECIFIED TOLERANCES	
.X	±.060
.XX	±.030
.XXX	±.015
FRACTIONAL	±1/16
ANGULAR	±1/2°
SURFACE FINISH	63
DO NOT SCALE DRAWING DIMENSIONS ARE INCHES	

**ICE QUBE, INC.**  
THIS IS A PROPRIETARY DOCUMENT. DO NOT REPRODUCE OR DISCLOSE WITHOUT THE EXPRESS WRITTEN PERMISSION OF ICE QUBE, INC.  
 DESCRIPTION  
**IQ2500V SPEC DRAWING, 480V XP2**  
 DRAWING NUMBER  
**IQ351152**  
 REV  
**B**



**\*IMPORTANT\***  
 GASKET MUST BE APPLIED AS SHOWN FOR PROPER OPERATION AND TO MAINTAIN NEMA INTEGRITY.

ITEM NUMBER N/A	USED ON IQ2500V	UNLESS OTHERWISE SPECIFIED TOLERANCES X $\pm$ .060 .XX $\pm$ .030 .XXX $\pm$ .015 FRACTIONAL $\pm$ 1/4 ANGULAR $\pm$ 1/2°	<p>THIS IS A PROPRIETARY DOCUMENT. DO NOT REPRODUCE OR DISCLOSE WITHOUT THE EXPRESS WRITTEN PERMISSION OF ICE QUBE, INC.</p>
MATERIAL N/A		<p>EST WT: lbs</p> <p>DRAWN BY: RCC</p> <p>DATE: 4/13/2017</p> <p>SCALE: 1:6</p>	
<p>DESCRIPTION IQ2500V SPEC DRAWING, 480V XP2</p>			DRAWING NUMBER <b>IQ351152</b>
			REV <b>B</b>