

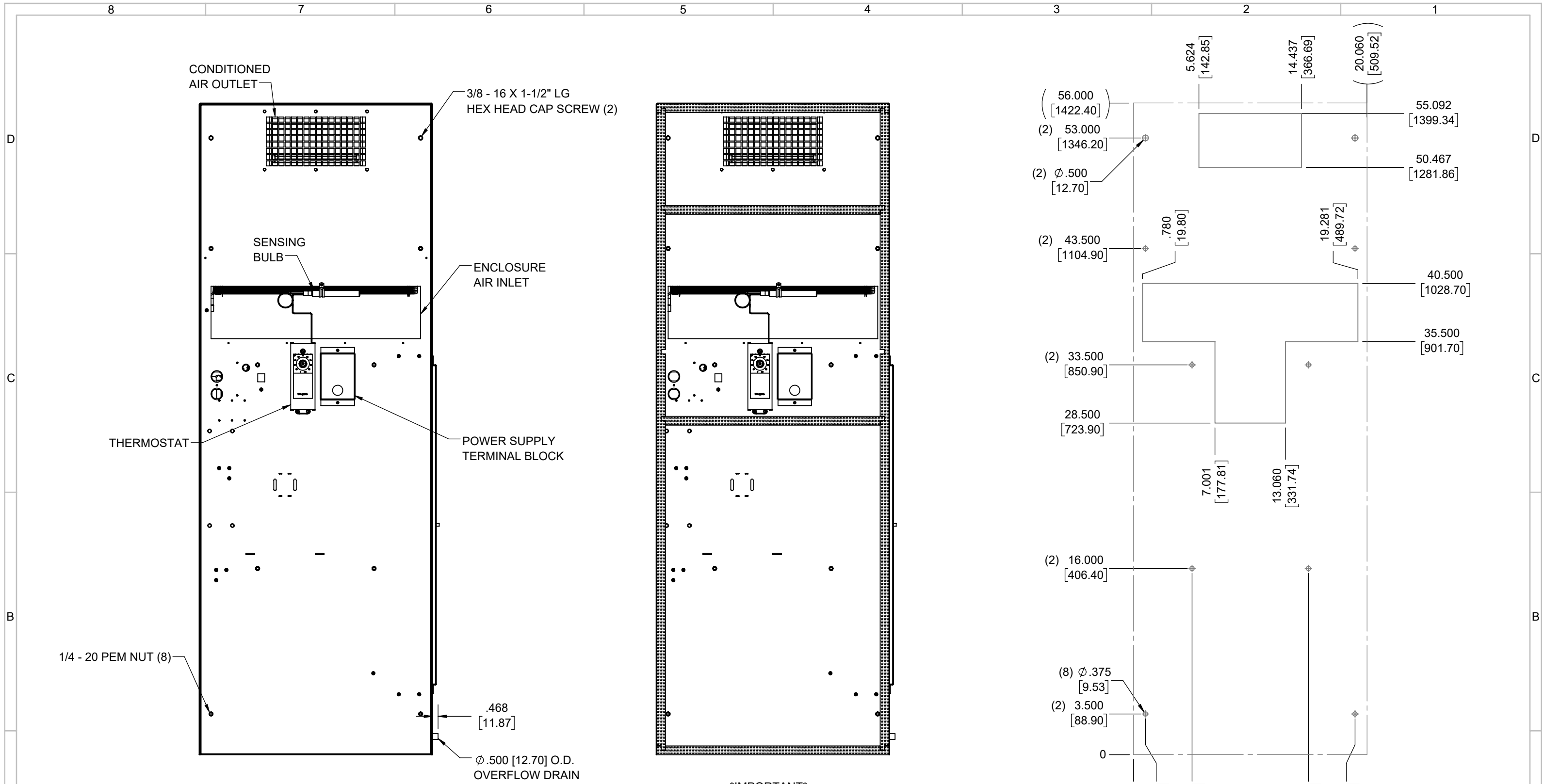
IQ14000V
 COOLING CAPACITY: 14000 BTUH (4106W) @131°F (55°C)
 MAXIMUM AMPS: 13.9/16.5 (3197/3795W) @230V/60/50HZ
 MAXIMUM OPERATING TEMP: 131°F (55°C)
 MINIMUM OPERATING TEMP: -4°F (-20°C)
 DIMENSIONS: 56.00" (1422MM) H X 20.06" (510MM) W X 14.31" (363MM) D
 WEIGHT: 218 LBS (99.1KG)

REV	REVISION	CHG	DATE	APP	DATE	CN #
C	ADDED CFM, dBA, AND CLEARANCE INFO	RCC	3/26/2018			1351
B	ADDED 50 HZ AND WATTAGE INFO	RCC	12/27/2017			
A	REDRAWN IN SW	RCC	4/7/2017			

ITEM NUMBER	N/A	USED ON	IQ14000V
MATERIAL	N/A		
EST WT:	lbs		
DRAWN BY	RCC	DATE	4/7/2017
		SCALE	1:13

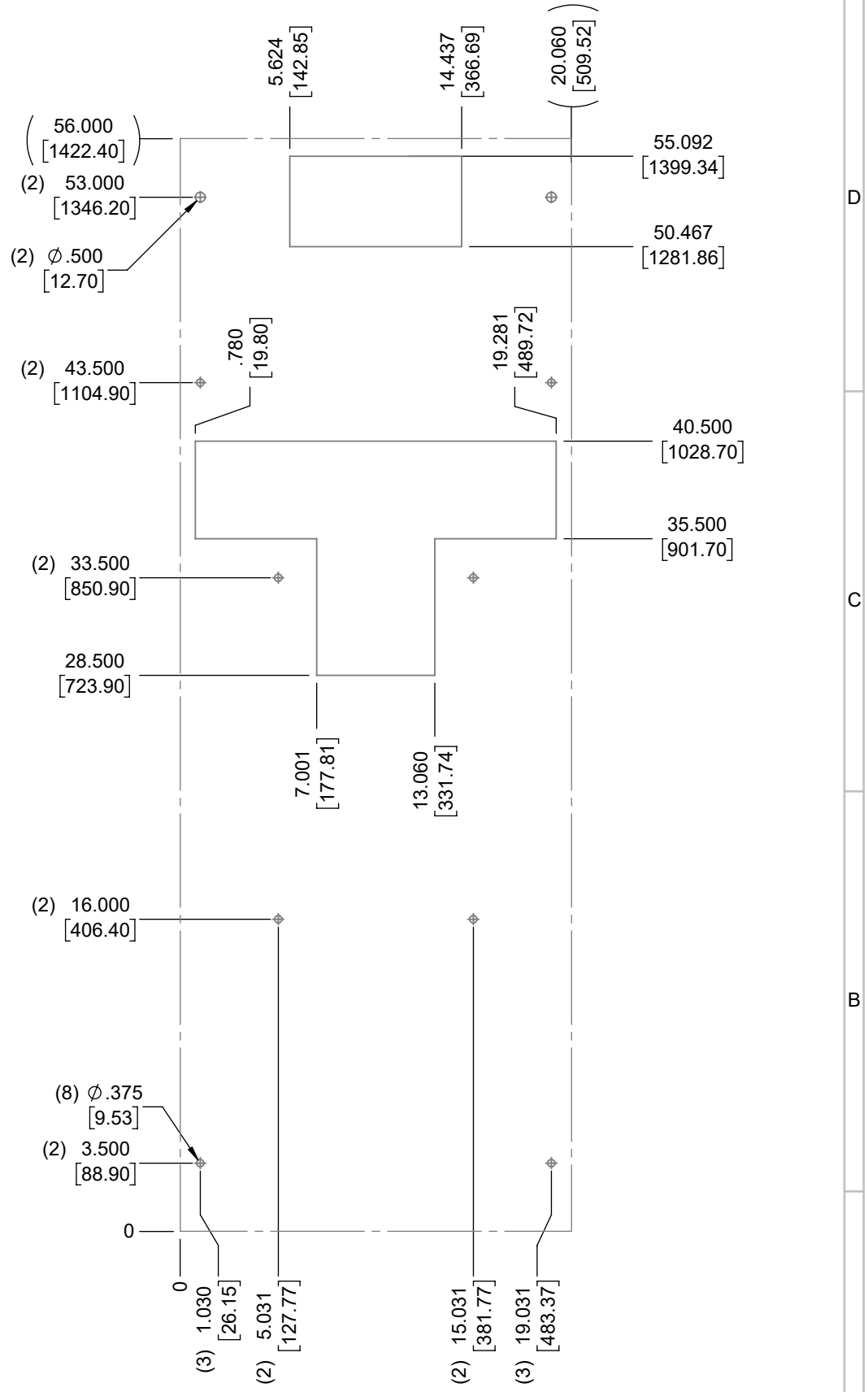
UNLESS OTHERWISE SPECIFIED TOLERANCES	
.X	±.060
.XX	±.030
.XXX	±.015
FRACTIONAL	±1/16
ANGULAR	±1/2°
SURFACE FINISH ⁶³	
DO NOT SCALE DRAWING DIMENSIONS ARE INCHES	

ICE QUBE, INC.
THIS IS A PROPRIETARY DOCUMENT. DO NOT REPRODUCE OR DISCLOSE WITHOUT THE EXPRESS WRITTEN PERMISSION OF ICE QUBE, INC.
 DESCRIPTION
IQ14000V SPEC DRAWING XP2
 DRAWING NUMBER
IQ271011



IMPORTANT
 GASKET MUST BE
 APPLIED AS SHOWN
 FOR PROPER OPERATION
 AND TO MAINTAIN
 NEMA INTEGRITY.

EVAP. OUTLET ≈ 727 CFM
 COND. OUTLET ≈ 1100 CFM
 SOUND LEVEL @5FT FROM UNIT @ A HT. OF 3FT = 84 dBA
 SOUND LEVEL @2FT FROM UNIT @ A HT. OF 5FT = 83 dBA
 CONDENSER INLET MIN. CLEARANCE 4.55"



ITEM NUMBER N/A	USED ON IQ14000V	UNLESS OTHERWISE SPECIFIED TOLERANCES X ±.060 .XX ±.030 .XXX ±.015 FRACTIONAL ±1/4 ANGULAR ±1/2°	 <small>THIS IS A PROPRIETARY DOCUMENT. DO NOT REPRODUCE OR DISCLOSE WITHOUT THE EXPRESS WRITTEN PERMISSION OF ICE QUBE, INC.</small> DESCRIPTION IQ14000V SPEC DRAWING XP2
MATERIAL N/A		SURFACE FINISH 63	
EST WT: lbs		SCALE 1:8	DRAWING NUMBER IQ271011
DRAWN BY RCC	DATE 4/7/2017		REV C