

IQ5000V16
 COOLING CAPACITY: 5000 BTUH (1466W) @131°F (55°C)
 MAXIMUM AMPS: 9.7 (1164W) @120V/60HZ
 MAXIMUM AMPS: 5.0/5.5 (1150/1210W) @230/220V 60/50HZ
 MAXIMUM OPERATING TEMP: 131°F (55°C)
 MINIMUM OPERATING TEMP: -40°F (-40°C)
 DIMENSIONS: 35.97" (914MM) H X 15.93" (405MM) W X 7.34" (186MM) D
 WEIGHT: 85 LBS (38.6KG)

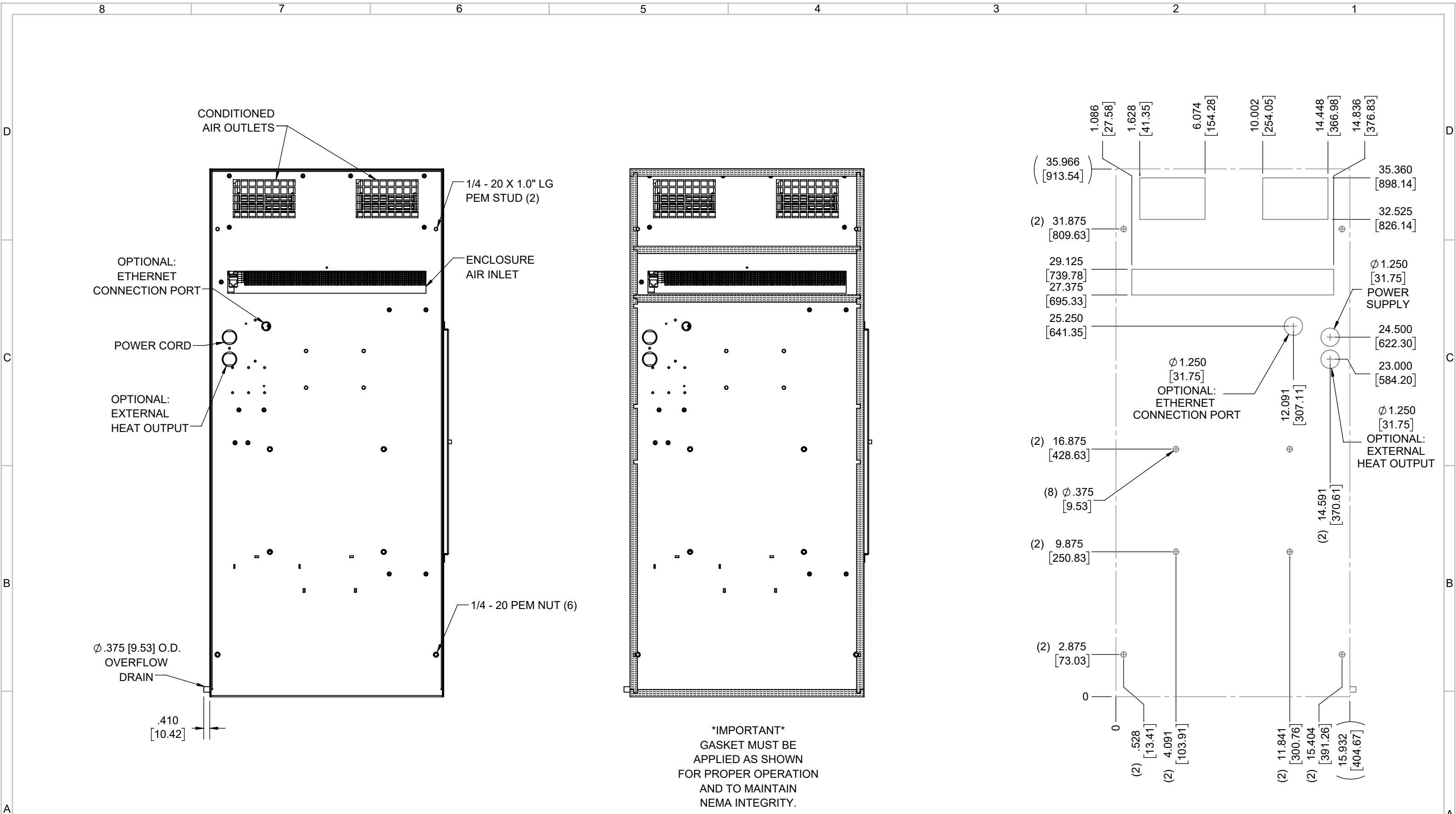
REV	CHG	DATE	APP	DATE	CN #
C		3/22/2018	RCC		1351
B		12/15/2017	RCC		
A		4/4/2017	RCC		

ITEM NUMBER	N/A
MATERIAL	N/A
EST WT:	lbs
DRAWN BY	RCC
DATE	4/4/2017

USED ON	IQ5000V16
SCALE	1:8

UNLESS OTHERWISE SPECIFIED TOLERANCES	
.X	±.060
.XX	±.030
.XXX	±.015
FRACTIONAL	±1/16
ANGULAR	±1/2°
SURFACE FINISH	63
DO NOT SCALE DRAWING DIMENSIONS ARE INCHES	

ICE QUBE, INC.
 THIS IS A PROPRIETARY DOCUMENT. DO NOT REPRODUCE OR DISCLOSE WITHOUT THE EXPRESS WRITTEN PERMISSION OF ICE QUBE, INC.
 DESCRIPTION
IQ5000V16 SPEC DRAWING
 DRAWING NUMBER
IQ280217
 REV
C



IMPORTANT
 GASKET MUST BE APPLIED AS SHOWN FOR PROPER OPERATION AND TO MAINTAIN NEMA INTEGRITY.

EVAP. OUTLET ≈ 236 CFM
 COND. OUTLET ≈ 410 CFM
 SOUND LEVEL @5FT FROM UNIT @ A HT. OF 3FT = 66 dBA
 SOUND LEVEL @2FT FROM UNIT @ A HT. OF 5FT = 64 dBA
 CONDENSER INLET MIN. CLEARANCE 2.34"

ITEM NUMBER N/A	USED ON IQ5000V16	UNLESS OTHERWISE SPECIFIED TOLERANCES X ±.060 .XX ±.030 .XXX ±.015 FRACTIONAL ±1/4 ANGULAR ±1/2°	<p>ICE QUBE, INC. <small>THIS IS A PROPRIETARY DOCUMENT. DO NOT REPRODUCE OR DISCLOSE WITHOUT THE EXPRESS WRITTEN PERMISSION OF ICE QUBE, INC.</small></p>
MATERIAL N/A		<p>EST WT: lbs</p> <p>DRAWN BY: RCC</p> <p>DATE: 4/4/2017</p> <p>SCALE: 1:6</p> <p>DO NOT SCALE DRAWING DIMENSIONS ARE INCHES</p>	
DESCRIPTION IQ5000V16 SPEC DRAWING			DRAWING NUMBER IQ280217
REV C			