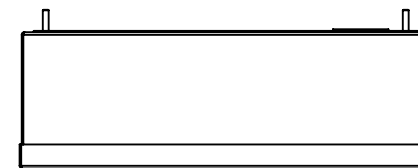
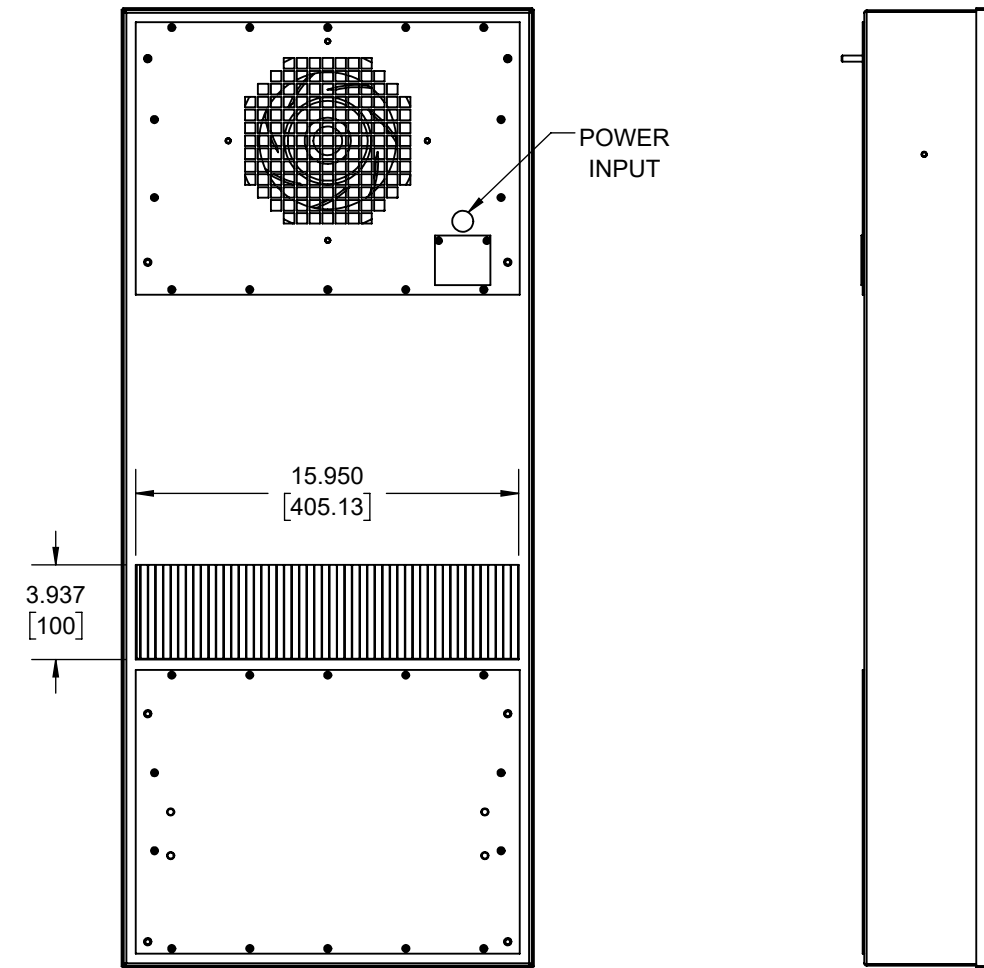
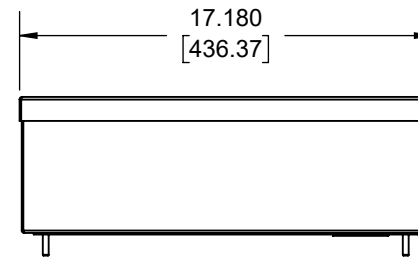
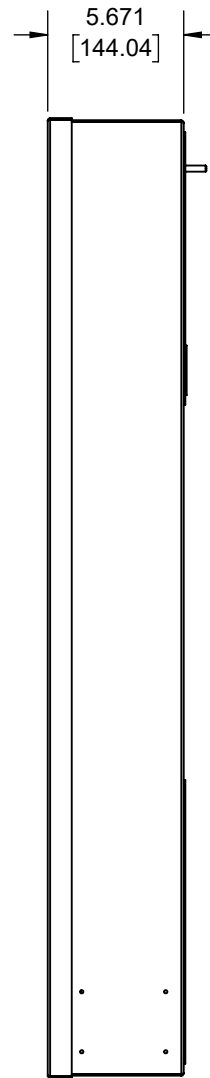
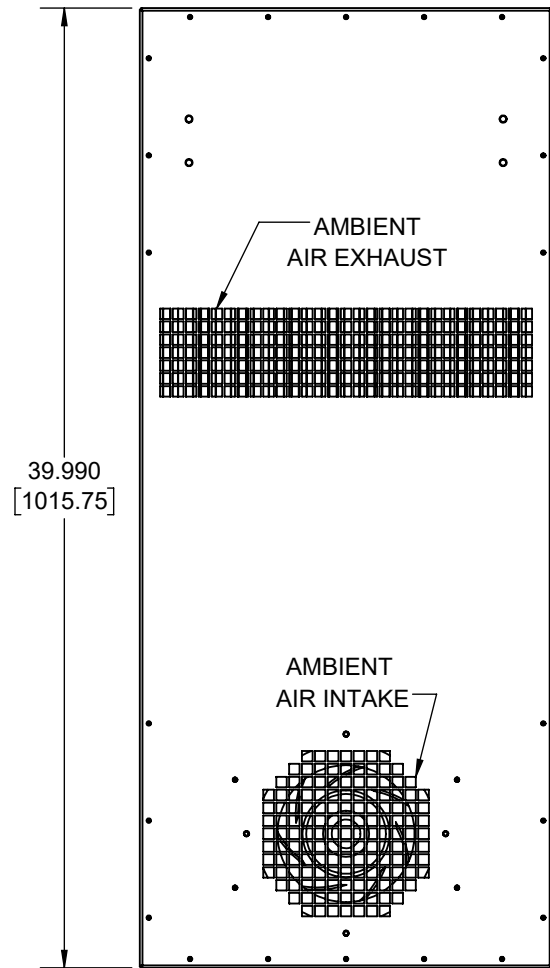
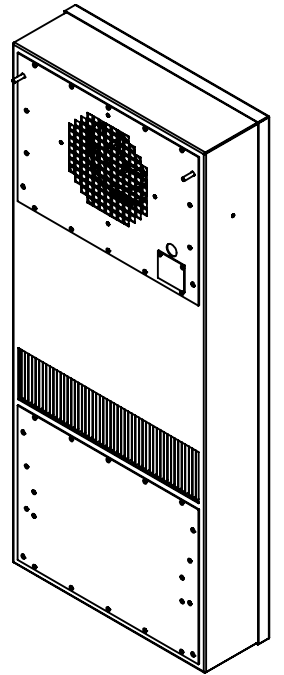
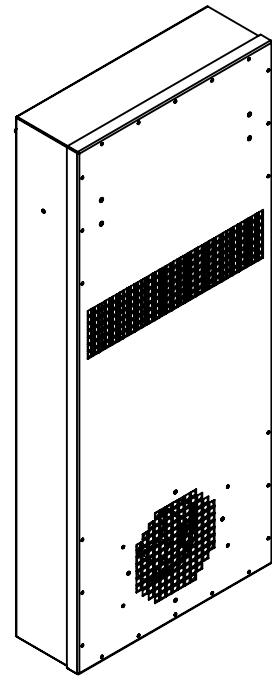


# IQ6100HE-CF



IQ6100HE-CF  
 COOLING CAPACITY: 47 WATTS/°F  
 MAXIMUM AMPS: 3.70A (444W) @ 120V/60HZ  
 MAXIMUM AMPS: 1.80/1.40A (414/322W) @ 230V 60/50HZ  
 MAXIMUM AMPS: 8.82A (212W) @ 24VDC  
 MAXIMUM AMPS: 5.42A (260W) @ 48VDC  
 MAXIMUM OPERATING TEMP: 176°F (80°C)  
 DIMENSIONS: 39.99" (1016MM) H X 17.18" (436MM) W X 5.67" (144MM) D  
 WEIGHT: 60 LBS (27.2KG)

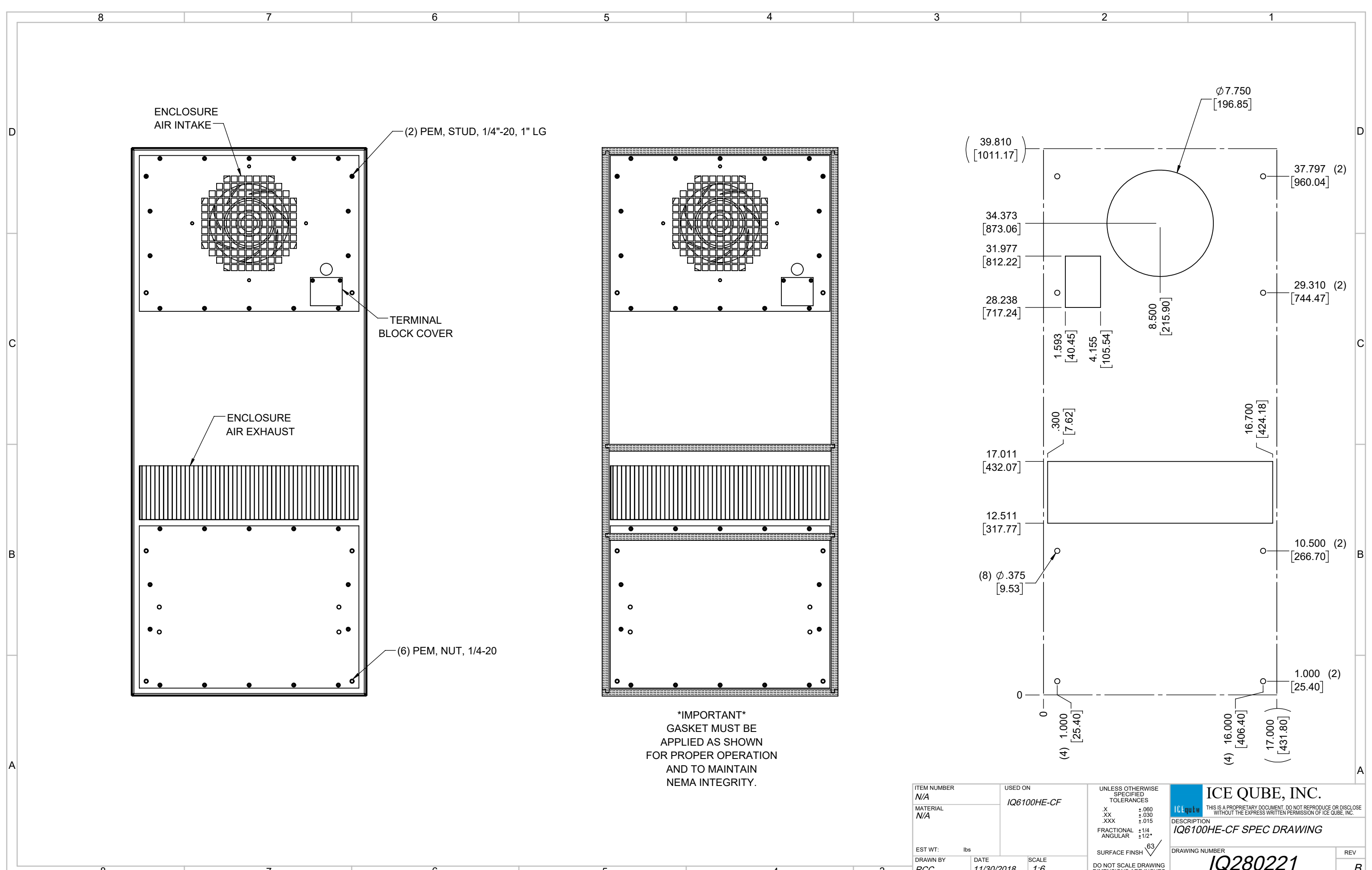
REV	DESCRIPTION	CHG	DATE	APP	DATE	CN #
B	INCREASED OPERATING TEMPERATURE	ART	4/4/2019			
A	INITIAL DRAFT	RCC	11/30/2018			

ITEM NUMBER	N/A
MATERIAL	N/A
EST WT:	lbs
DRAWN BY	RCC

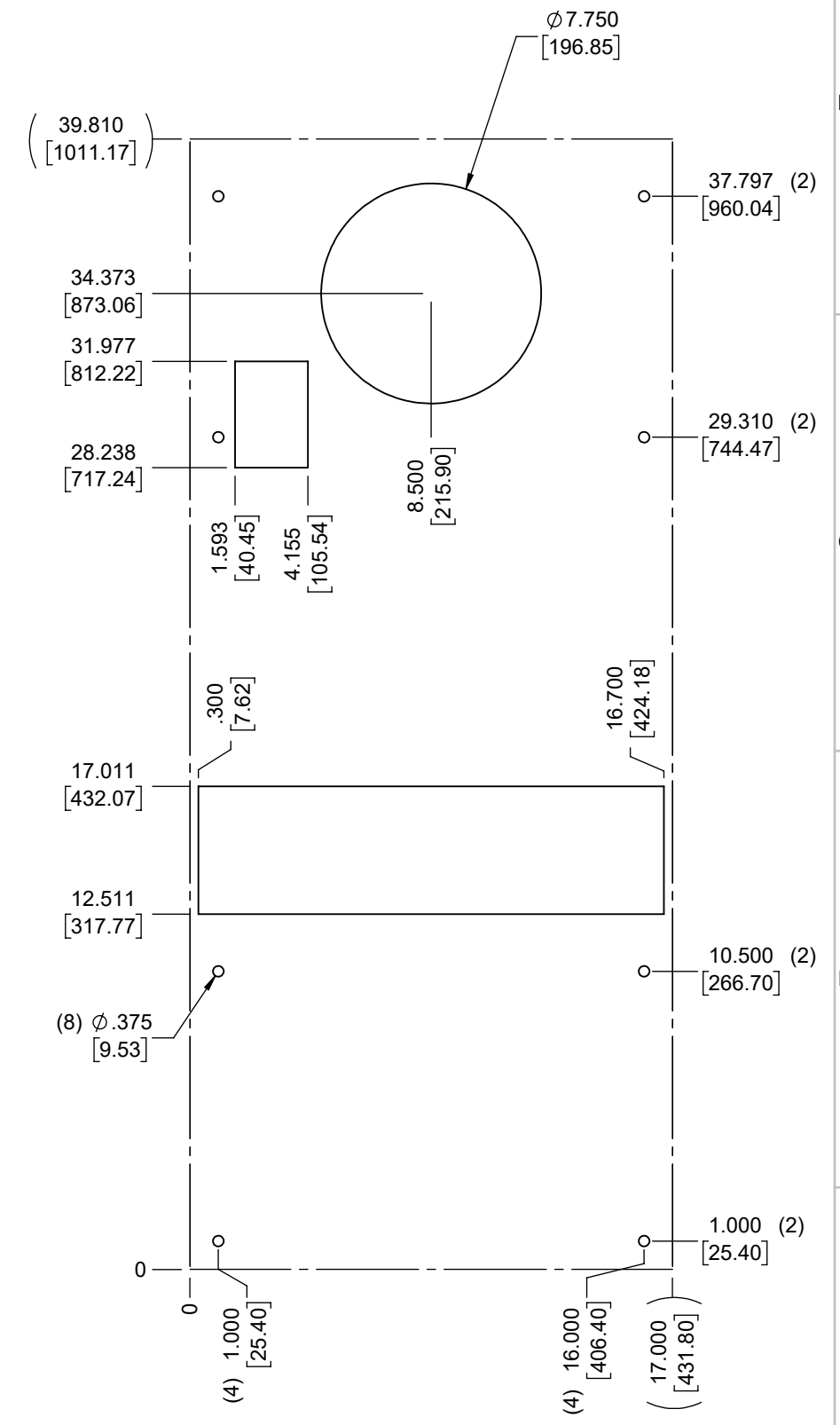
USED ON	IQ6100HE-CF
DATE	11/30/2018
SCALE	1:8

UNLESS OTHERWISE SPECIFIED TOLERANCES	
.X	±.060
.XX	±.030
.XXX	±.015
FRACTIONAL	±1/16
ANGULAR	±1/2°
SURFACE FINISH	63
DO NOT SCALE DRAWING DIMENSIONS ARE INCHES	

**ICE QUBE, INC.**  
THIS IS A PROPRIETARY DOCUMENT. DO NOT REPRODUCE OR DISCLOSE WITHOUT THE EXPRESS WRITTEN PERMISSION OF ICE QUBE, INC.  
 DESCRIPTION  
**IQ6100HE-CF SPEC DRAWING**  
 DRAWING NUMBER  
**IQ280221**  
 REV  
**B**



**\*IMPORTANT\***  
 GASKET MUST BE  
 APPLIED AS SHOWN  
 FOR PROPER OPERATION  
 AND TO MAINTAIN  
 NEMA INTEGRITY.



ITEM NUMBER <i>N/A</i>	USED ON <i>IQ6100HE-CF</i>	UNLESS OTHERWISE SPECIFIED TOLERANCES X $\pm$ .060 .XX $\pm$ .030 .XXX $\pm$ .015 FRACTIONAL $\pm$ 1/4 ANGULAR $\pm$ 1/2°	<p>ICE QUBE, INC.  <small>THIS IS A PROPRIETARY DOCUMENT. DO NOT REPRODUCE OR DISCLOSE WITHOUT THE EXPRESS WRITTEN PERMISSION OF ICE QUBE, INC.</small></p>
MATERIAL <i>N/A</i>		SURFACE FINISH 63	
EST WT: lbs	DATE <i>11/30/2018</i>	SCALE <i>1:6</i>	DESCRIPTION <i>IQ6100HE-CF SPEC DRAWING</i>
DRAWN BY <i>RCC</i>			DRAWING NUMBER <i>IQ280221</i>
			REV <i>B</i>