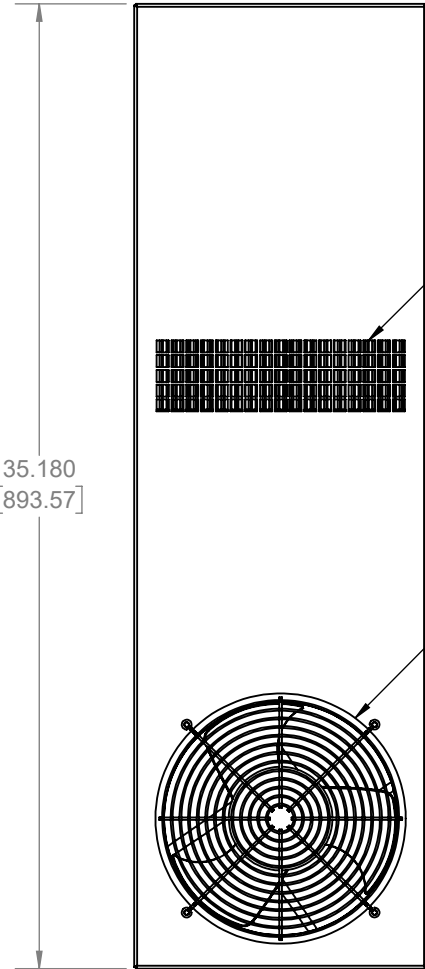
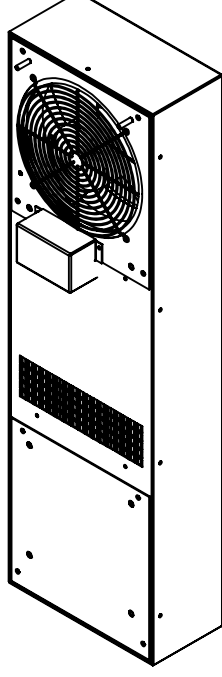
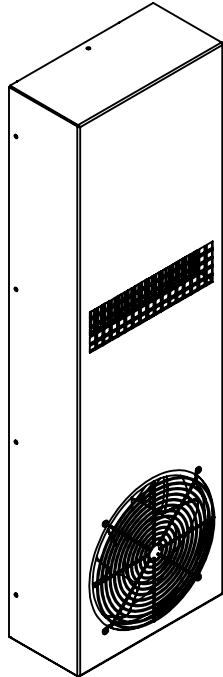


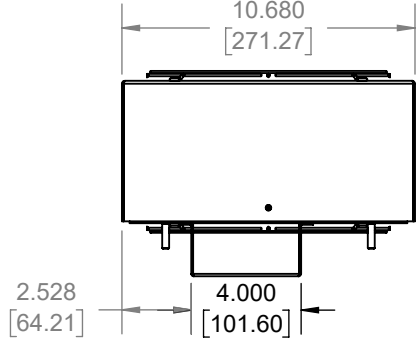
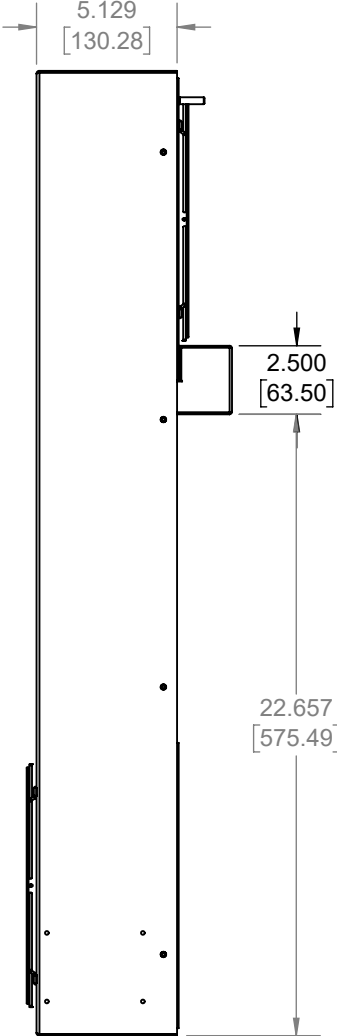
IQ2200HE-XP2

CLASS I, DIVISION 2 CERTIFIED GROUPS A, B, C, AND D

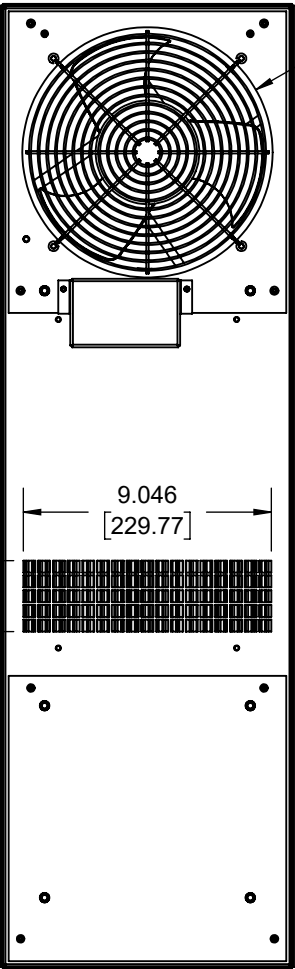


AMBIENT
AIR EXHAUST

AMBIENT
AIR INTAKE

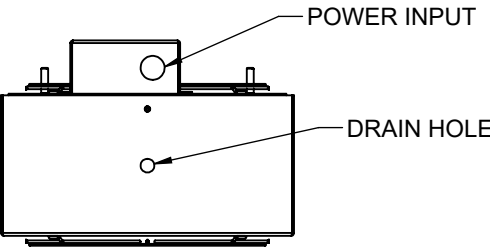


2.528
[64.21]



Ø9.125
[231.78]

2.000
[50.79]



POWER INPUT

DRAIN HOLE

IQ2200HE-XP2
 COOLING CAPACITY: 18 WATTS/°F
 MAXIMUM AMPS: 2.80A (336W) @ 120V/60HZ
 MAXIMUM AMPS: 0.96/1.00A (221/230W) @ 230V 60/50HZ
 MAXIMUM AMPS: 4.22A (101W) @ 24VDC
 MAXIMUM AMPS: 2.08A (100W) @ 48VDC
 MAXIMUM OPERATING TEMP: 140°F (60°C)
 DIMENSIONS: 35.18" (894MM) H X 10.68" (271MM) W X 5.13" (130MM) D
 WEIGHT: 37 LBS (16.8KG)

B	UPDATED CUTOUT	NAT	1/14/2020				
A	INITIAL DRAFT	RCC	11/30/2018				
REV	REVISION	CHG	DATE	APP	DATE	CN #	

ITEM NUMBER	N/A
MATERIAL	N/A
EST WT:	lbs
DRAWN BY	RCC

USED ON	IQ2200HE-XP2
DATE	11/30/18
SCALE	1:7

UNLESS OTHERWISE SPECIFIED TOLERANCES	
.X	±.060
.XX	±.030
.XXX	±.015
FRACTIONAL	±1/16
ANGULAR	±1/2°
SURFACE FINISH	63
DO NOT SCALE DRAWING DIMENSIONS ARE INCHES	

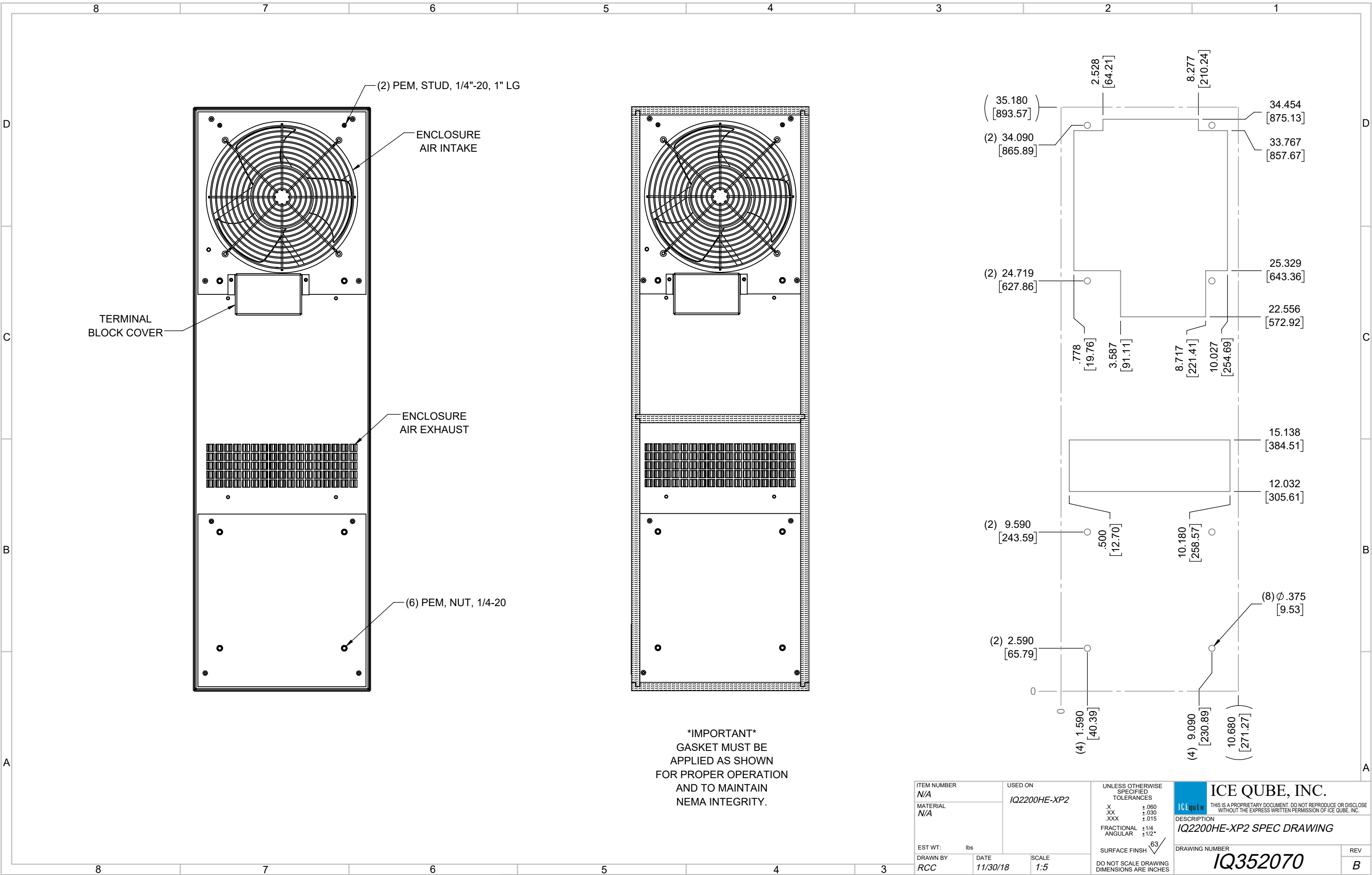
ICE QUBE, INC.

THIS IS A PROPRIETARY DOCUMENT. DO NOT REPRODUCE OR DISCLOSE WITHOUT THE EXPRESS WRITTEN PERMISSION OF ICE QUBE, INC.

DESCRIPTION
IQ2200HE-XP2 SPEC DRAWING

DRAWING NUMBER
IQ352070

REV
B



(2) PEM, STUD, 1/4"-20, 1" LG

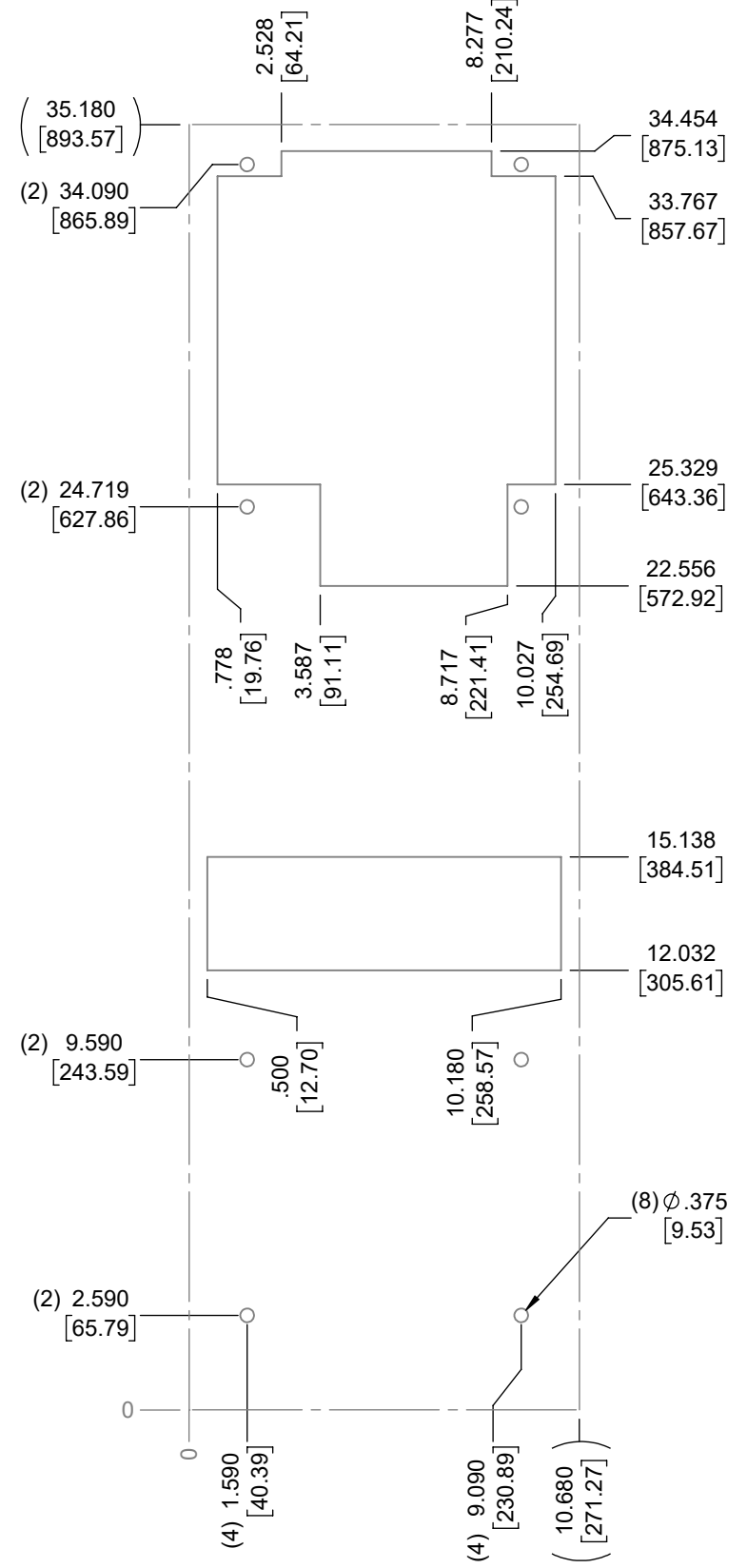
ENCLOSURE AIR INTAKE

TERMINAL BLOCK COVER

ENCLOSURE AIR EXHAUST

(6) PEM, NUT, 1/4-20

IMPORTANT
 GASKET MUST BE APPLIED AS SHOWN FOR PROPER OPERATION AND TO MAINTAIN NEMA INTEGRITY.



ITEM NUMBER <i>N/A</i>	USED ON <i>IQ2200HE-XP2</i>	UNLESS OTHERWISE SPECIFIED TOLERANCES X ±.060 .XX ±.030 .XXX ±.015 FRACTIONAL ±1/4 ANGULAR ±1/2°	<p>THIS IS A PROPRIETARY DOCUMENT. DO NOT REPRODUCE OR DISCLOSE WITHOUT THE EXPRESS WRITTEN PERMISSION OF ICE QUBE, INC.</p>
MATERIAL <i>N/A</i>		DESCRIPTION <i>IQ2200HE-XP2 SPEC DRAWING</i>	
EST WT: lbs	SCALE <i>1:5</i>	SURFACE FINISH <i>63</i>	DRAWING NUMBER <i>IQ352070</i>
DRAWN BY <i>RCC</i>	DATE <i>11/30/18</i>	DO NOT SCALE DRAWING DIMENSIONS ARE INCHES	REV <i>B</i>