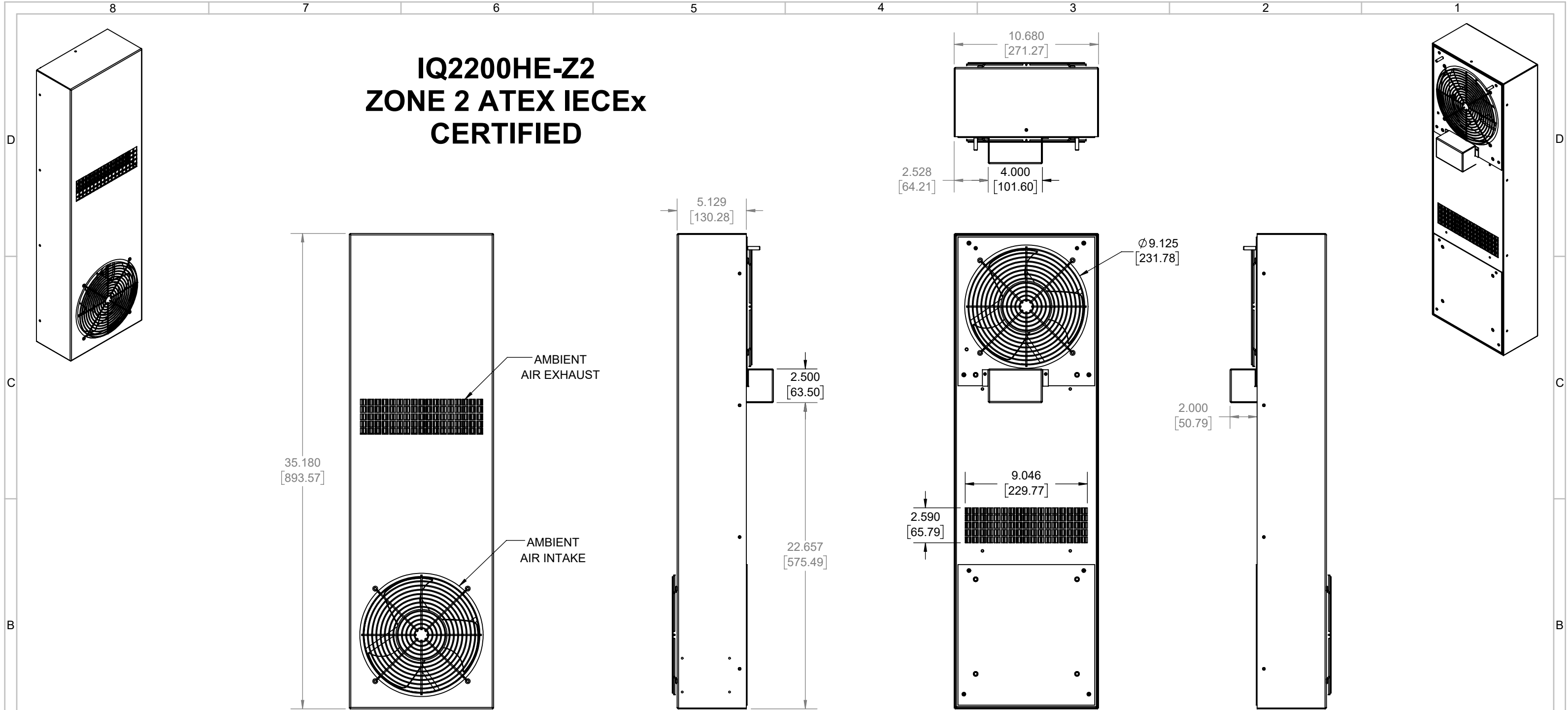
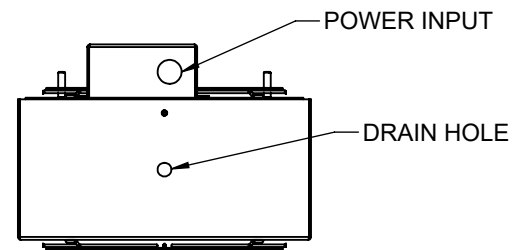


IQ2200HE-Z2 ZONE 2 ATEX IECEx CERTIFIED



IQ2200HE-Z2
 CE 0539 II 3 G Ex nA nC IIC T6 Gc
 COOLING CAPACITY: 18 WATTS/°F
 MAXIMUM AMPS: 2.80A (336W) @ 120V/60HZ
 MAXIMUM AMPS: 0.96/1.00A (221/230W) @ 230V 60/50HZ
 MAXIMUM AMPS: 4.22A (101W) @ 24VDC
 MAXIMUM AMPS: 2.08A (100W) @ 48VDC

MAINTAINS IP66 BETWEEN EQUIPMENT AND ENCLOSURE
 OPERATING TEMPERATURE: -40° - +60°C (T CODE: T6 @ 24/48VDC & 120/230VAC)
 OPERATING TEMPERATURE: -40° - +70°C (T CODE: T5 @ 120/230VAC)
 OPERATING TEMPERATURE: -40° - +75°C (T CODE: T5 @ 24/48VDC)
 OPERATING TEMPERATURE: -40° - +80°C (T CODE: T4 @ 120/230VAC)
 DIMENSIONS: 35.18" (894MM) H X 10.68" (271MM) W X 5.13" (130MM) D
 WEIGHT: 37 LBS (16.8KG)

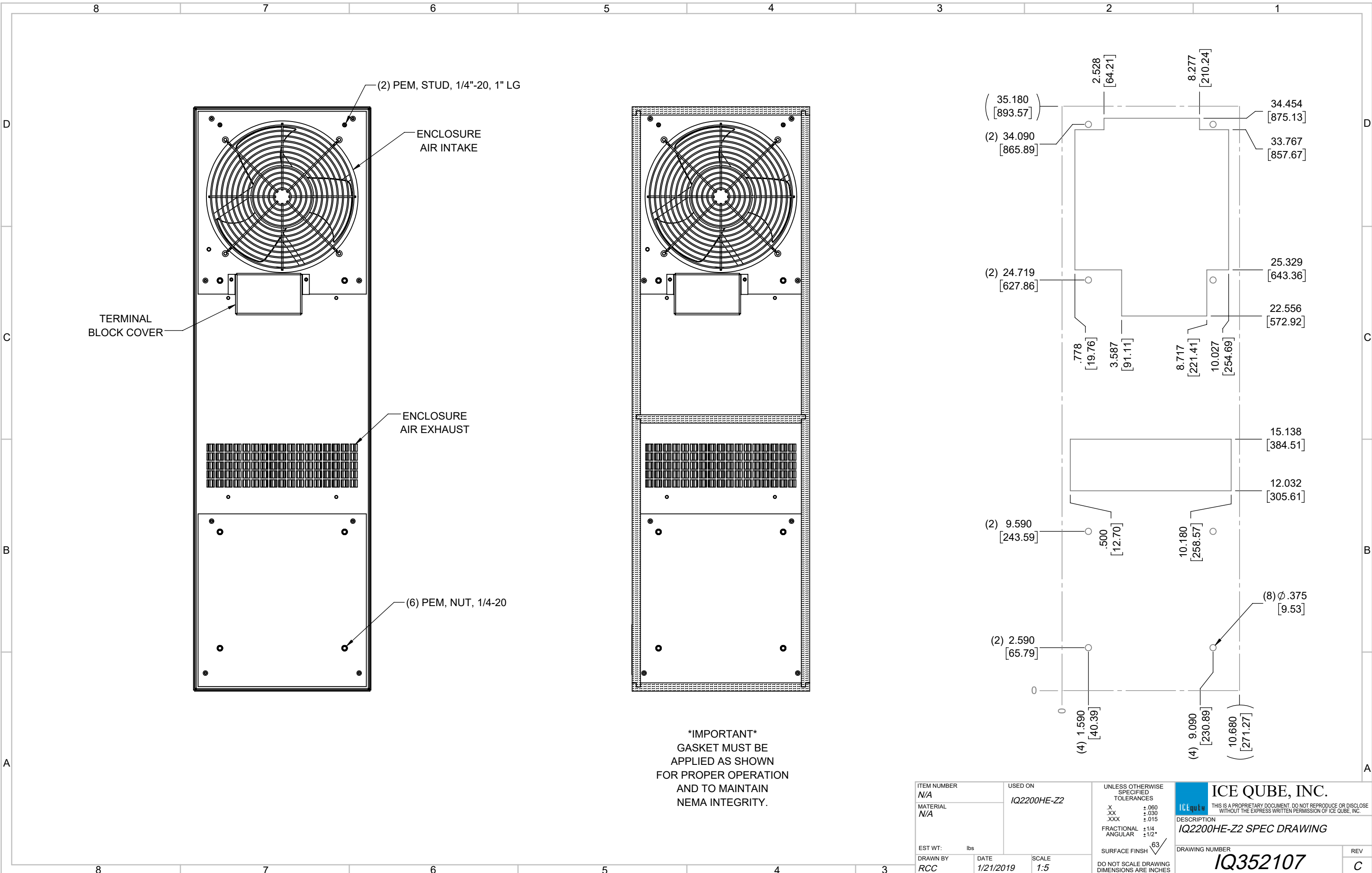


REV	REVISION	CHG	DATE	APP	DATE	CN #
C	UPDATED CUTOOT	NAT	1/14/2020			
B	UPDATED OPERATING TEMP AND T CODE	RCC	4/4/2019			
A	INITIAL DRAFT	RCC	1/21/2019			

ITEM NUMBER N/A	USED ON IQ2200HE-Z2
MATERIAL N/A	
EST WT: lbs	
DRAWN BY RCC	DATE 1/21/2019
	SCALE 1:7

UNLESS OTHERWISE SPECIFIED TOLERANCES
.X ±.060
.XX ±.030
.XXX ±.015
FRACTIONAL ANGULAR ±1/16° ±1/2°
SURFACE FINISH 63
DO NOT SCALE DRAWING DIMENSIONS ARE INCHES

ICE QUBE, INC.
THIS IS A PROPRIETARY DOCUMENT. DO NOT REPRODUCE OR DISCLOSE WITHOUT THE EXPRESS WRITTEN PERMISSION OF ICE QUBE, INC.
 DESCRIPTION
IQ2200HE-Z2 SPEC DRAWING
 DRAWING NUMBER
IQ352107



(2) PEM, STUD, 1/4"-20, 1" LG

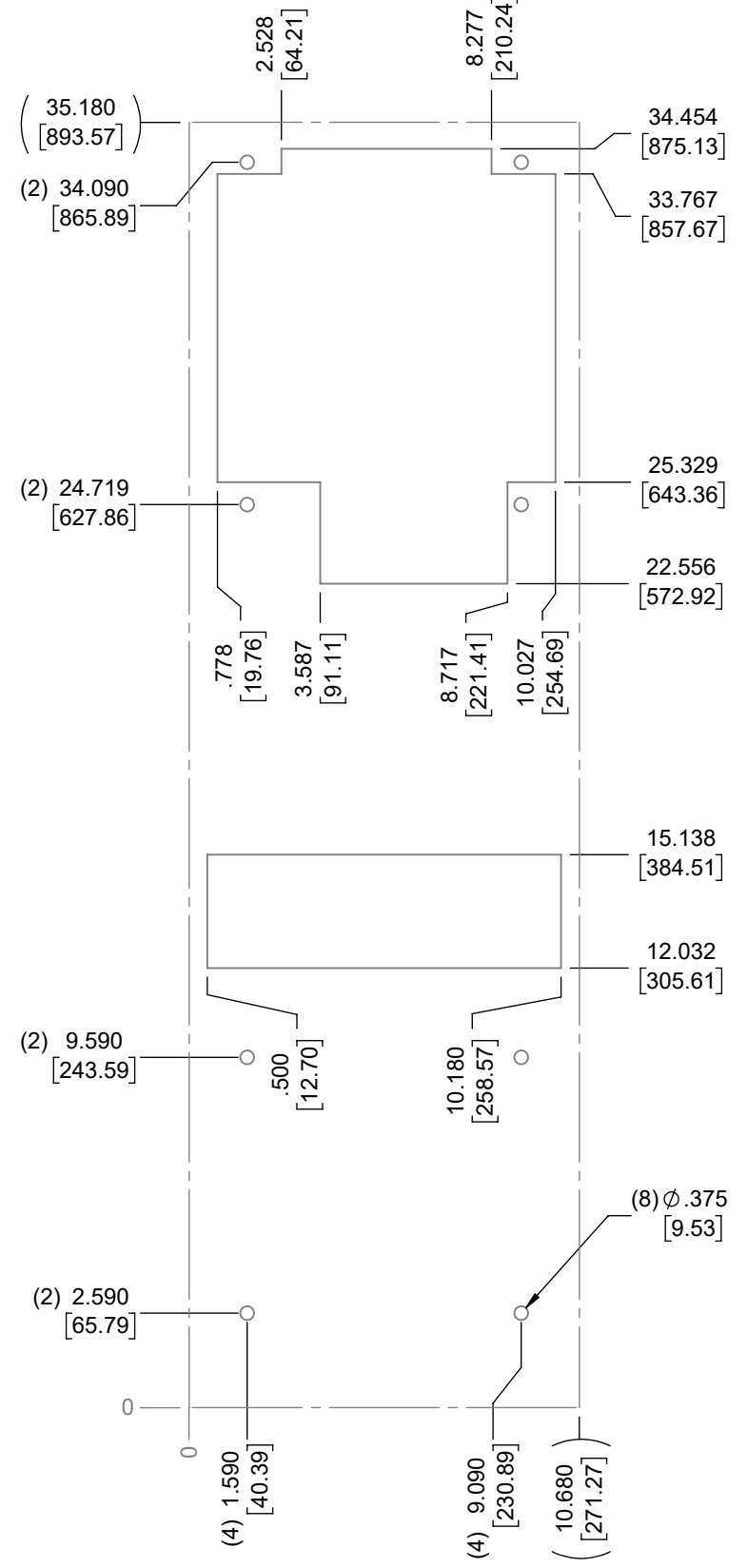
ENCLOSURE AIR INTAKE

TERMINAL BLOCK COVER

ENCLOSURE AIR EXHAUST

(6) PEM, NUT, 1/4-20

IMPORTANT
 GASKET MUST BE APPLIED AS SHOWN FOR PROPER OPERATION AND TO MAINTAIN NEMA INTEGRITY.



ITEM NUMBER N/A	USED ON IQ2200HE-Z2	UNLESS OTHERWISE SPECIFIED TOLERANCES X ±.060 .XX ±.030 .XXX ±.015 FRACTIONAL ±1/4 ANGULAR ±1/2°	<p>THIS IS A PROPRIETARY DOCUMENT. DO NOT REPRODUCE OR DISCLOSE WITHOUT THE EXPRESS WRITTEN PERMISSION OF ICE QUBE, INC.</p>
MATERIAL N/A		DESCRIPTION IQ2200HE-Z2 SPEC DRAWING	
EST WT: lbs	DRAWN BY RCC	DATE 1/21/2019	DRAWING NUMBER IQ352107
		SCALE 1:5	REV C