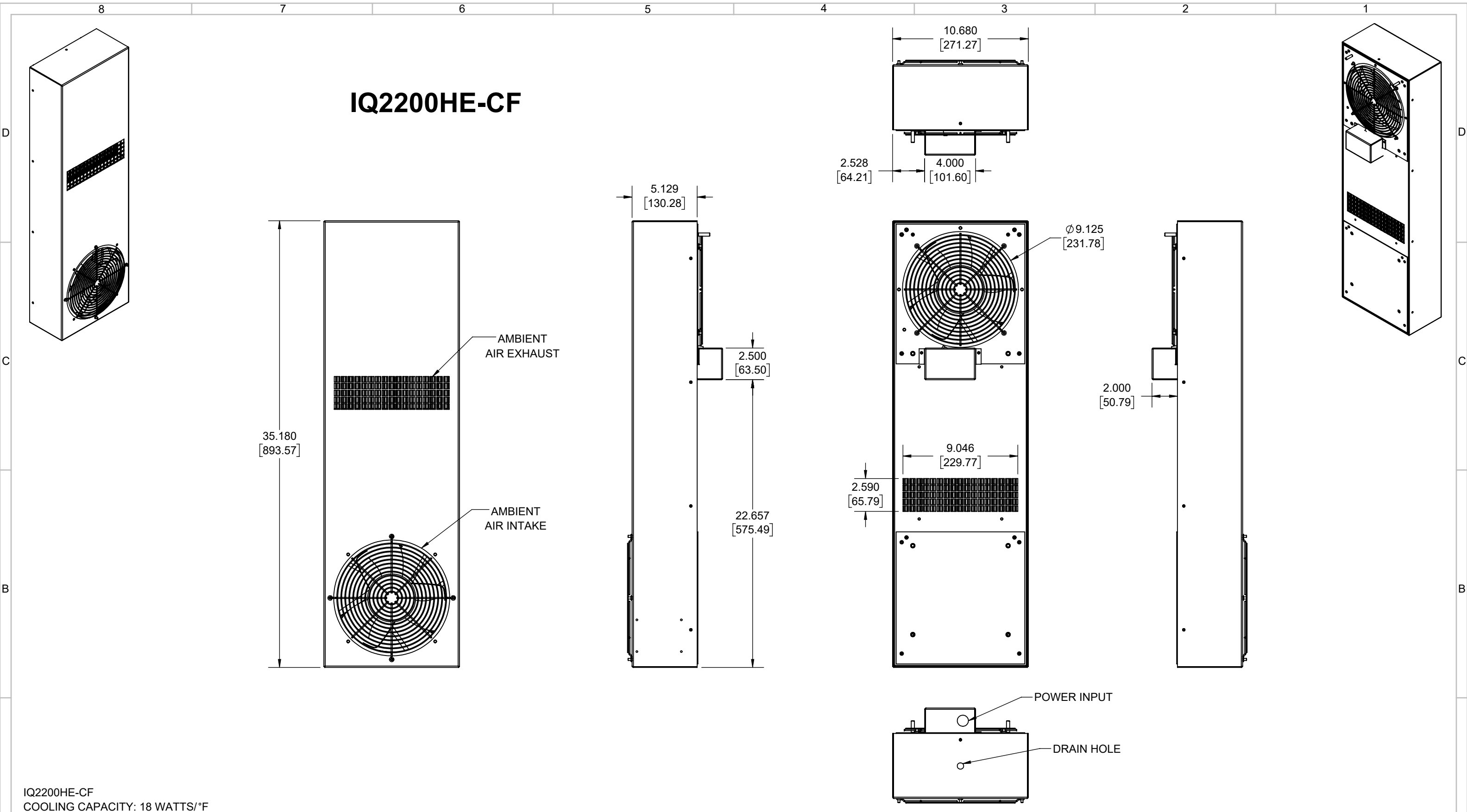
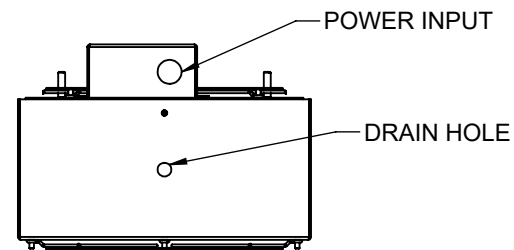


IQ2200HE-CF



IQ2200HE-CF
 COOLING CAPACITY: 18 WATTS/°F
 MAXIMUM AMPS: 2.80A (336W) @ 120V/60HZ
 MAXIMUM AMPS: 0.96/1.00A (221/230W) @ 230V 60/50HZ
 MAXIMUM AMPS: 4.22A (101W) @ 24VDC
 MAXIMUM AMPS: 2.08A (100W) @ 48VDC
 MAXIMUM OPERATING TEMP: 176°F (80°C)
 DIMENSIONS: 35.18" (894MM) H X 10.68" (271MM) W X 5.13" (130MM) D
 WEIGHT: 37 LBS (16.8KG)



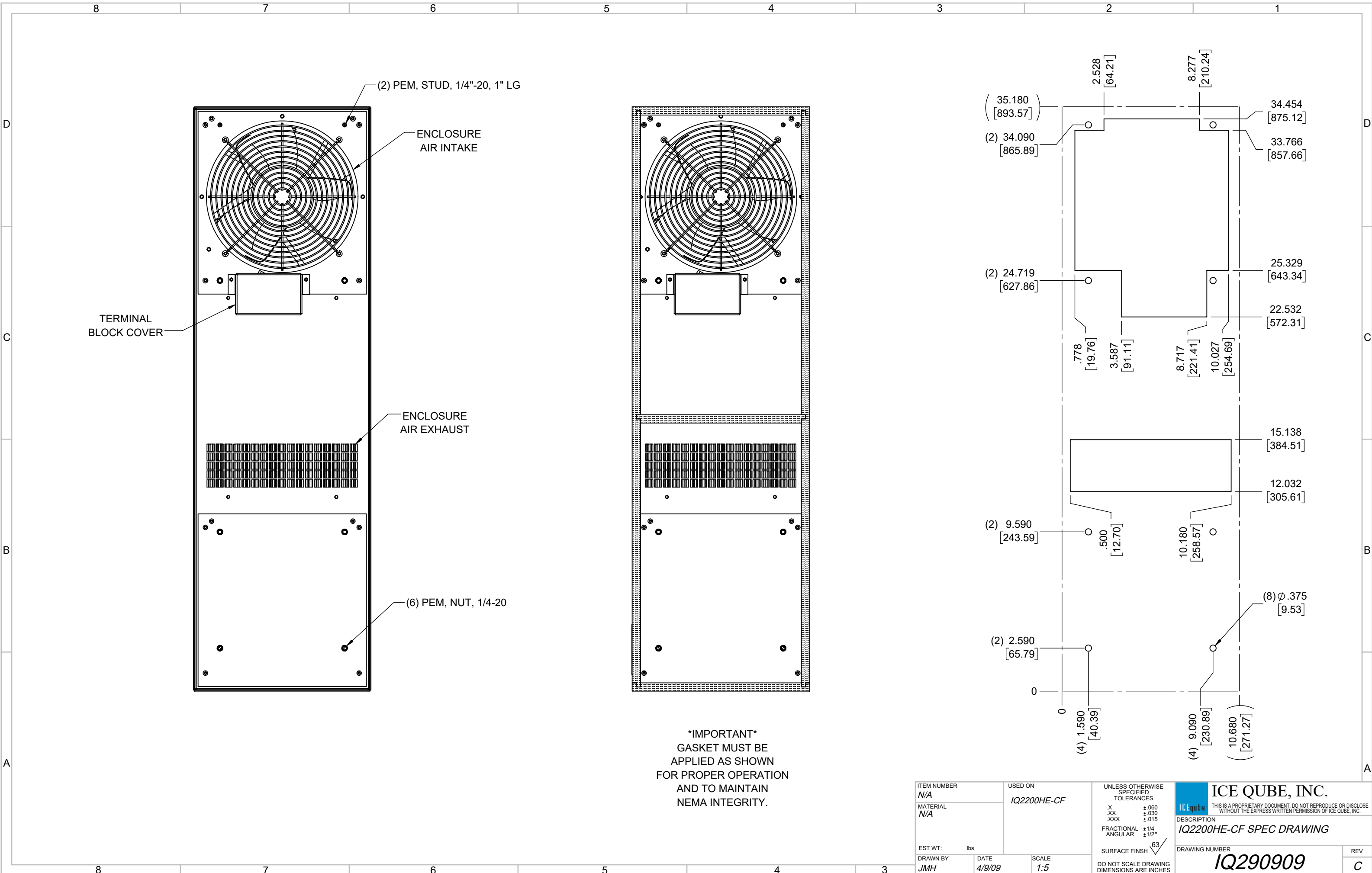
REV	REVISION	CHG	DATE	APP	DATE	CN #
C	INCREASED TEMPERATURE RATING	ART	4/4/2019			
B	REPLACED POWER CORD WITH TERMINAL BLOCK	RCC	11/30/2018			
A	REDRAWN IN SOLIDWORKS	RKG	9/10/2014			

ITEM NUMBER	N/A
MATERIAL	N/A
EST WT:	lbs
DRAWN BY	JMH

USED ON	IQ2200HE-CF
DATE	4/9/09
SCALE	1:7

UNLESS OTHERWISE SPECIFIED TOLERANCES
.X ±.060
.XX ±.030
.XXX ±.015
FRACTIONAL ±1/16
ANGULAR ±1/2°
SURFACE FINISH 63
DO NOT SCALE DRAWING DIMENSIONS ARE INCHES

ICE QUBE, INC.
THIS IS A PROPRIETARY DOCUMENT. DO NOT REPRODUCE OR DISCLOSE WITHOUT THE EXPRESS WRITTEN PERMISSION OF ICE QUBE, INC.
 DESCRIPTION
IQ2200HE-CF SPEC DRAWING
 DRAWING NUMBER
IQ290909
 REV
C



(2) PEM, STUD, 1/4"-20, 1" LG

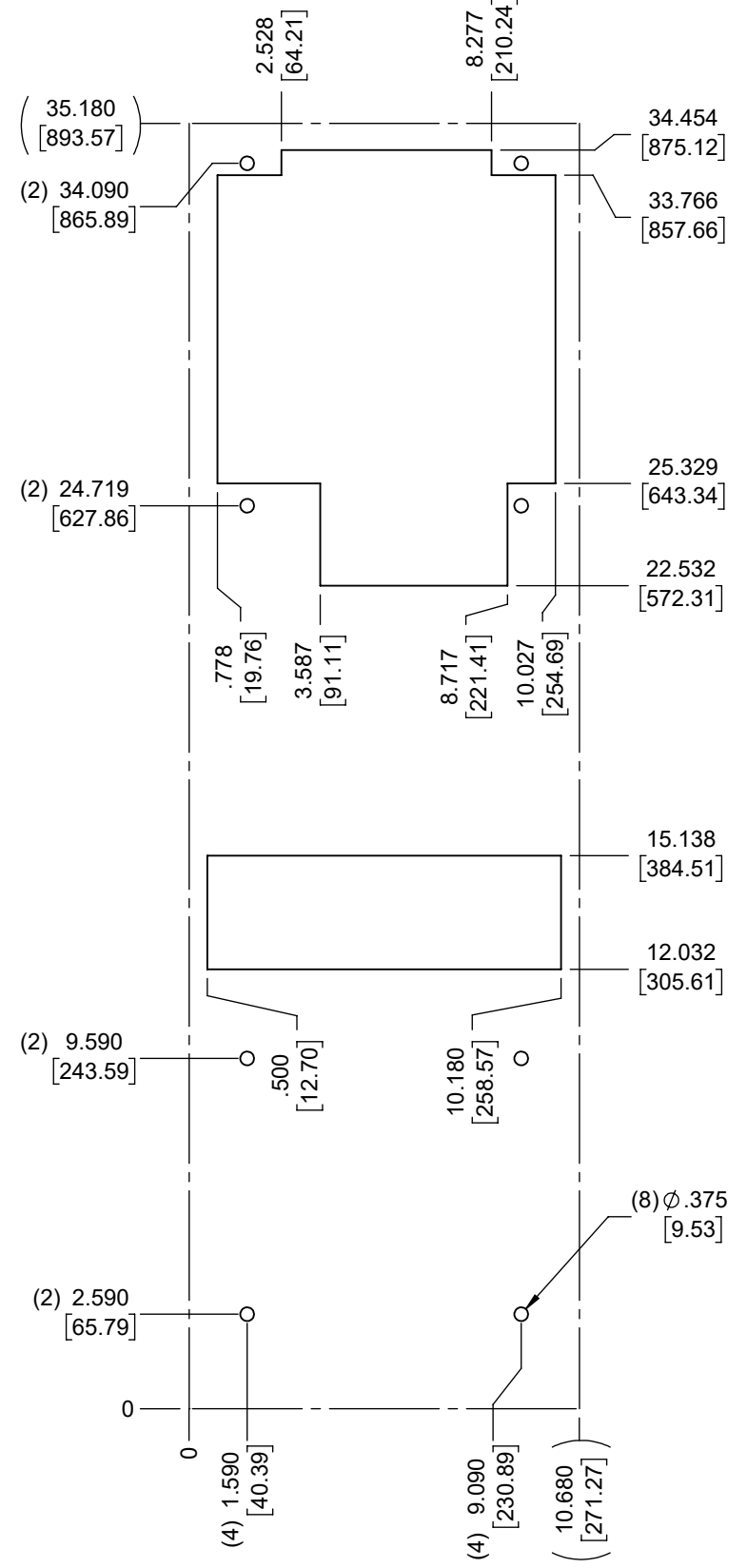
ENCLOSURE AIR INTAKE

TERMINAL BLOCK COVER

ENCLOSURE AIR EXHAUST

(6) PEM, NUT, 1/4-20

IMPORTANT
GASKET MUST BE APPLIED AS SHOWN FOR PROPER OPERATION AND TO MAINTAIN NEMA INTEGRITY.



ITEM NUMBER <i>N/A</i>	USED ON <i>IQ2200HE-CF</i>	UNLESS OTHERWISE SPECIFIED TOLERANCES X ±.060 .XX ±.030 .XXX ±.015 FRACTIONAL ±1/4 ANGULAR ±1/2°	<p>THIS IS A PROPRIETARY DOCUMENT. DO NOT REPRODUCE OR DISCLOSE WITHOUT THE EXPRESS WRITTEN PERMISSION OF ICE QUBE, INC.</p>
MATERIAL <i>N/A</i>		DESCRIPTION IQ2200HE-CF SPEC DRAWING	
EST WT: lbs	DRAWN BY <i>JMH</i>	DATE <i>4/9/09</i>	DRAWING NUMBER IQ290909
		SCALE <i>1:5</i>	REV C