

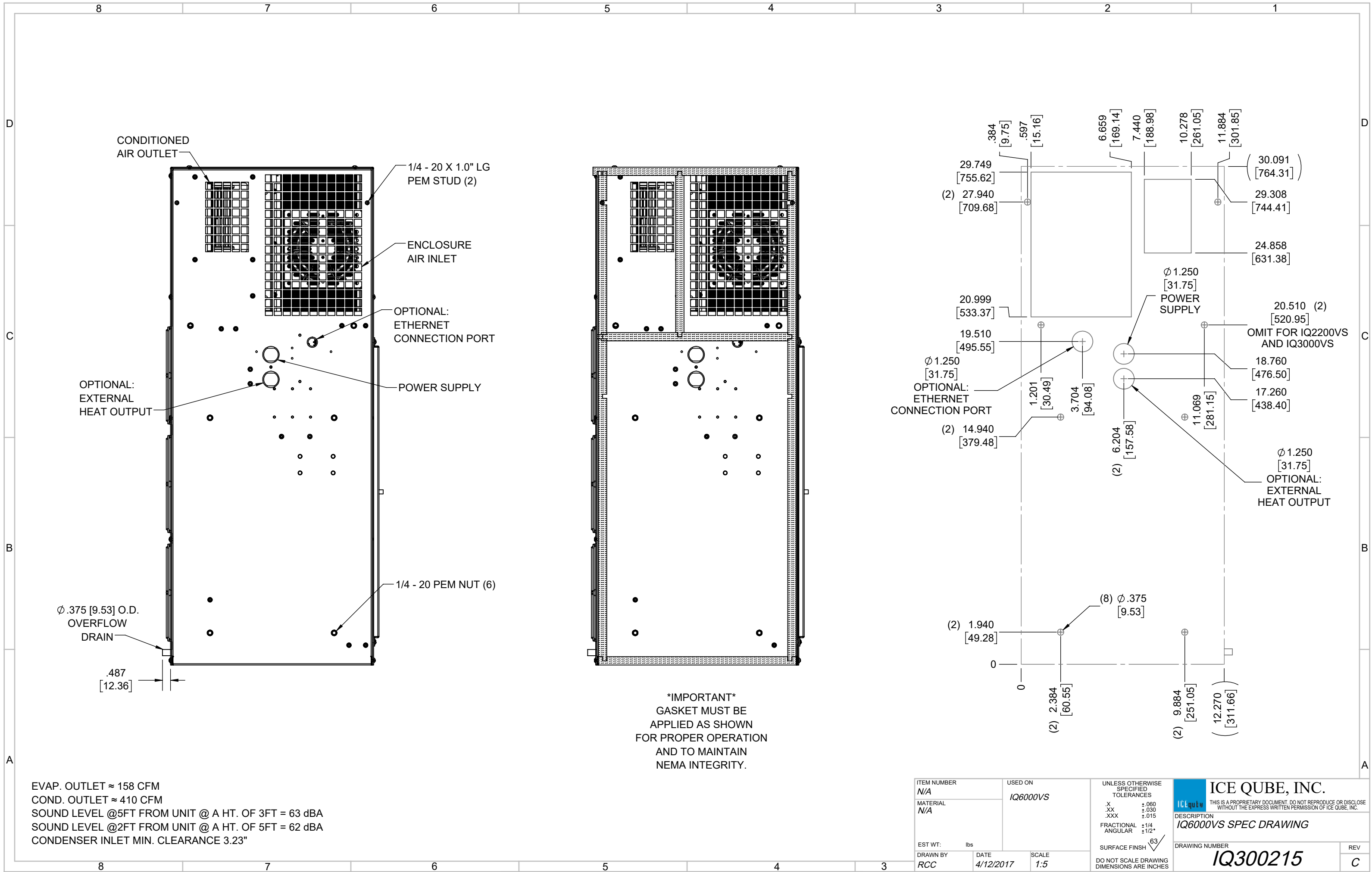
IQ6000VS
 COOLING CAPACITY: 6000 BTUH (1760W) @131°F (55°C)
 MAXIMUM AMPS: 8.0 (960W) @120V/60HZ
 MAXIMUM AMPS: 4.0/4.4 (920/968W) @230/220V 60/50HZ
 MAXIMUM OPERATING TEMP: 131°F (55°C)
 MINIMUM OPERATING TEMP: -40°F (-40°C)
 DIMENSIONS: 30.09" (764MM) H X 12.27" (312MM) W X 10.39" (264MM) D
 WEIGHT: 77 LBS (35KG)

REV	REVISION	CHG	DATE	APP	DATE	CN #
C	ADDED CFM, dBA, AND CLEARANCE INFO	RCC	3/28/2018			1351
B	ADDED WATTAGE INFO	RCC	1/3/2018			
A	REDRAWN IN SW	RCC	4/12/2017			

ITEM NUMBER N/A	USED ON IQ6000VS
MATERIAL N/A	
EST WT: lbs	
DRAWN BY RCC	DATE 4/12/2017
	SCALE 1:7

UNLESS OTHERWISE SPECIFIED TOLERANCES
.X ±.060
.XX ±.030
.XXX ±.015
FRACTIONAL ±1/16
ANGULAR ±1/2°
SURFACE FINISH 63
DO NOT SCALE DRAWING DIMENSIONS ARE INCHES

ICE QUBE, INC.
THIS IS A PROPRIETARY DOCUMENT. DO NOT REPRODUCE OR DISCLOSE WITHOUT THE EXPRESS WRITTEN PERMISSION OF ICE QUBE, INC.
 DESCRIPTION
IQ6000VS SPEC DRAWING
 DRAWING NUMBER
IQ300215



IMPORTANT
 GASKET MUST BE APPLIED AS SHOWN FOR PROPER OPERATION AND TO MAINTAIN NEMA INTEGRITY.

EVAP. OUTLET ≈ 158 CFM
 COND. OUTLET ≈ 410 CFM
 SOUND LEVEL @5FT FROM UNIT @ A HT. OF 3FT = 63 dBA
 SOUND LEVEL @2FT FROM UNIT @ A HT. OF 5FT = 62 dBA
 CONDENSER INLET MIN. CLEARANCE 3.23"

ITEM NUMBER N/A	USED ON IQ6000VS	UNLESS OTHERWISE SPECIFIED TOLERANCES X ±.060 .XX ±.030 .XXX ±.015 FRACTIONAL ±1/4 ANGULAR ±1/2°	<p>ICE QUBE, INC. <small>THIS IS A PROPRIETARY DOCUMENT. DO NOT REPRODUCE OR DISCLOSE WITHOUT THE EXPRESS WRITTEN PERMISSION OF ICE QUBE, INC.</small></p>
MATERIAL N/A		<p>EST WT: lbs</p> <p>DRAWN BY: RCC</p> <p>DATE: 4/12/2017</p> <p>SCALE: 1:5</p> <p>DO NOT SCALE DRAWING DIMENSIONS ARE INCHES</p>	
DESCRIPTION IQ6000VS SPEC DRAWING			DRAWING NUMBER IQ300215
REV C			