

IQ1200VS
 COOLING CAPACITY: 1200 BTUH (352W) @131°F (55°C)
 MAXIMUM AMPS: 0.9 (432W) @480V/60HZ
 MAXIMUM OPERATING TEMP: 131°F (55°C)
 MINIMUM OPERATING TEMP: -40°F (-40°C)
 DIMENSIONS: 26.28" (668MM) H X 11.51" (292MM) W X 6.26" (159MM) D
 WEIGHT: 56 LBS (25.5KG)

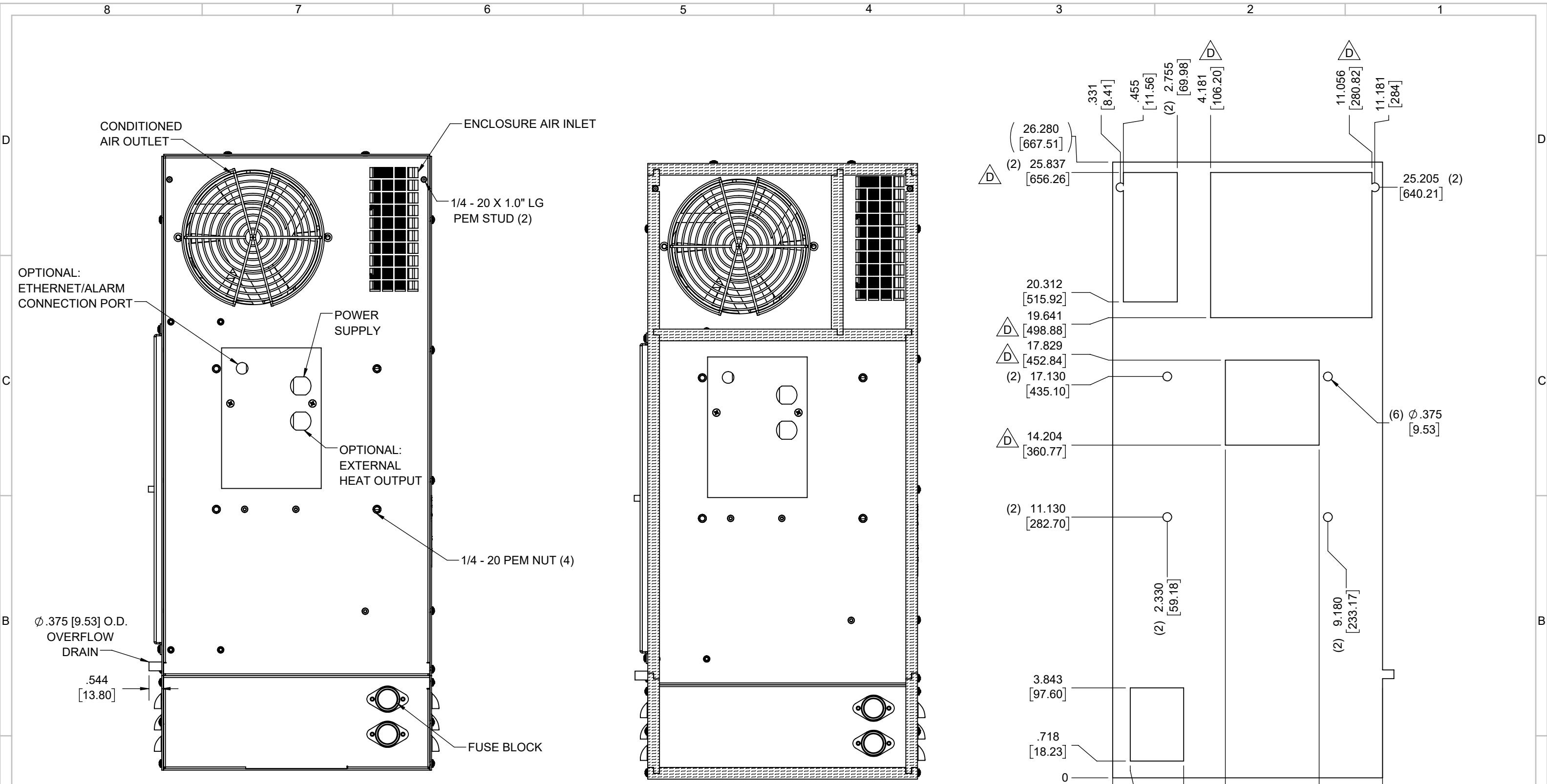
REV	REVISION	CHG	DATE	APP	DATE	CN #
D	UPDATED CUTOOUT DRAWING	SRZ	4/27/2020	NAT	4/28/2020	ECN-1429
C	ADDED CFM, dBA, AND CLEARANCE INFO	RCC	3/26/2018			1351
B	ADDED WATTAGE INFO	RCC	12/29/2017			
A	REDRAWN IN SW	RCC	4/6/2017			

ITEM NUMBER	N/A
MATERIAL	N/A
EST WT:	lbs
DRAWN BY	RCC

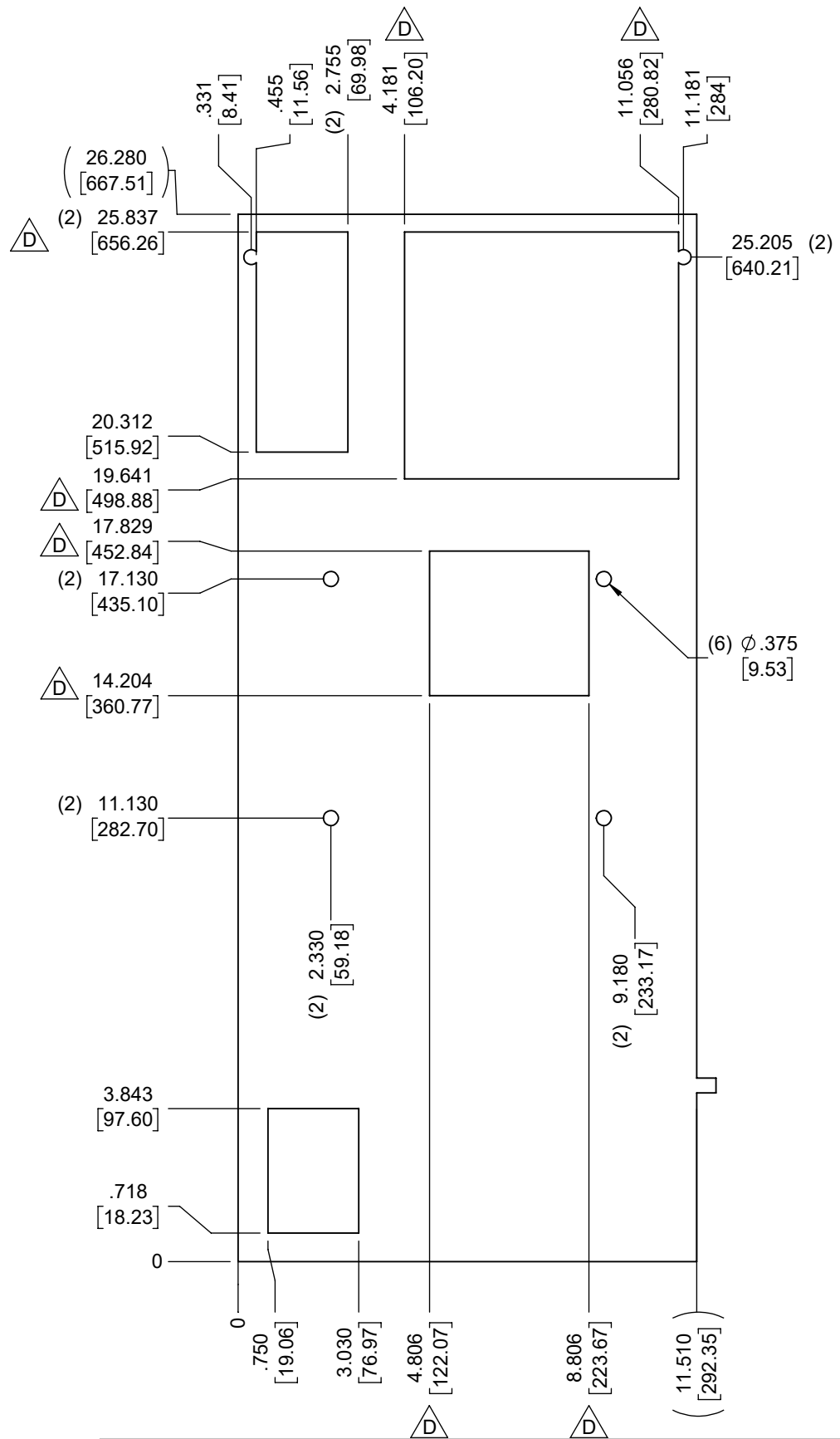
USED ON	IQ1200VS
DATE	04/06/2017
SCALE	1:6

UNLESS OTHERWISE SPECIFIED TOLERANCES	
.X	±.060
.XX	±.030
.XXX	±.015
FRACTIONAL	±1/16
ANGULAR	±1/2°
SURFACE FINISH $\sqrt{63}$	
DO NOT SCALE DRAWING DIMENSIONS ARE INCHES	

ICE QUBE, INC.
THIS IS A PROPRIETARY DOCUMENT. DO NOT REPRODUCE OR DISCLOSE WITHOUT THE EXPRESS WRITTEN PERMISSION OF ICE QUBE, INC.
 DESCRIPTION
IQ1200VS SPEC DRAWING, 480V
 DRAWING NUMBER
IQ300223
 REV
D



IMPORTANT
 GASKET MUST BE APPLIED AS SHOWN FOR PROPER OPERATION AND TO MAINTAIN NEMA INTEGRITY.



EVAP. OUTLET ≈ 190 CFM
 COND. OUTLET ≈ 158 CFM
 SOUND LEVEL @5FT FROM UNIT @ A HT. OF 3FT = 60 dBA
 SOUND LEVEL @2FT FROM UNIT @ A HT. OF 5FT = 61 dBA
 CONDENSER INLET MIN. CLEARANCE 2.08"

ITEM NUMBER N/A	USED ON IQ1200VS	UNLESS OTHERWISE SPECIFIED TOLERANCES X ±.060 XX ±.030 XXX ±.015 FRACTIONAL ±1/4 ANGULAR ±1/2°	<p>THIS IS A PROPRIETARY DOCUMENT. DO NOT REPRODUCE OR DISCLOSE WITHOUT THE EXPRESS WRITTEN PERMISSION OF ICE QUBE, INC.</p>
MATERIAL N/A		SURFACE FINISH 63	
EST. WT.: lbs	DATE 04/06/2017	SCALE 1:4	DESCRIPTION IQ1200VS SPEC DRAWING, 480V
DRAWN BY RCC			DRAWING NUMBER IQ300223
			REV D