

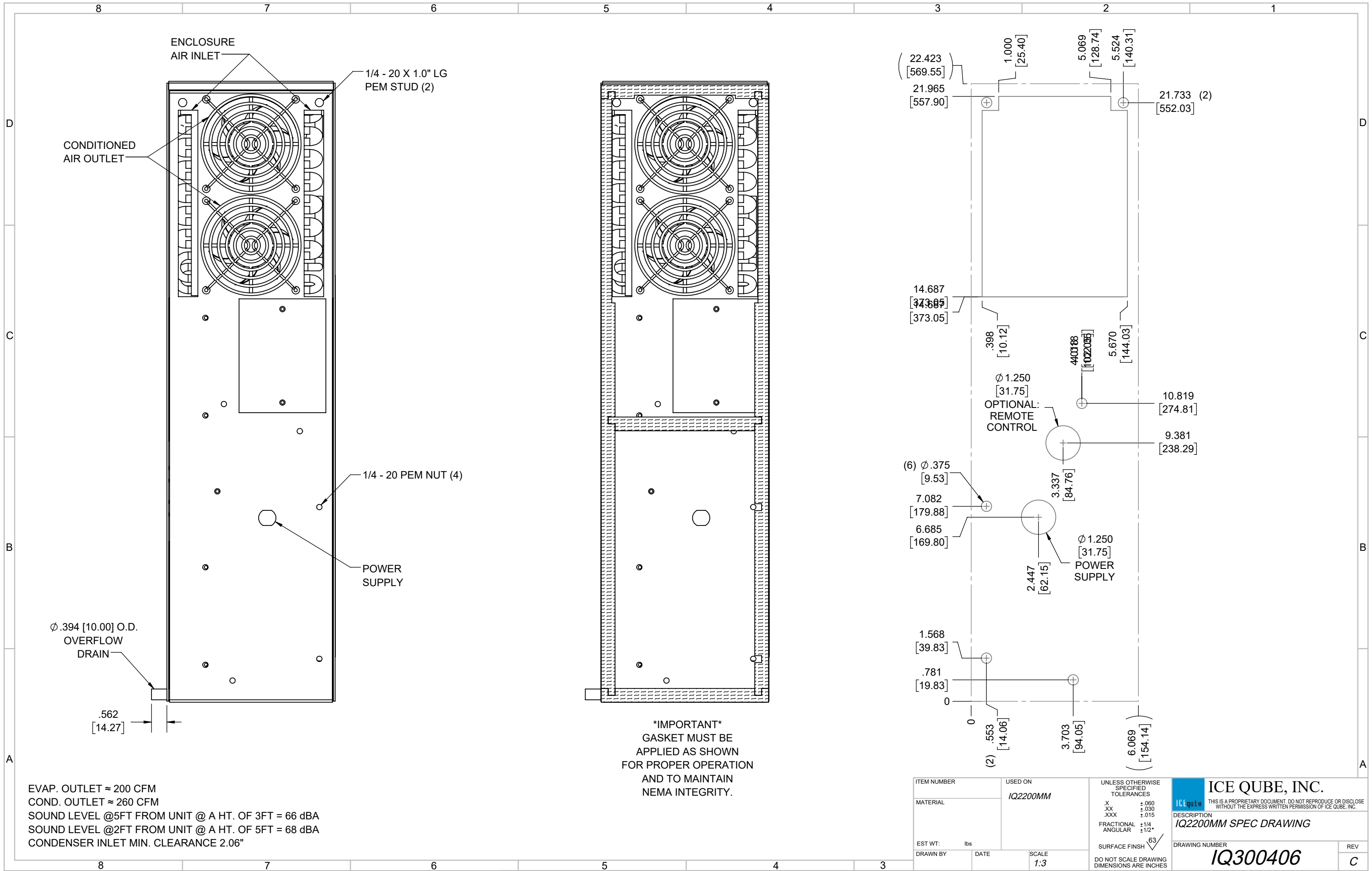
IQ2200MM
 COOLING CAPACITY: 2200 BTUH (645W) @131°F (55°C)
 MAXIMUM AMPS: 6.0 (720W) @120V/60HZ
 MAXIMUM AMPS: 3.5 (805W) @230V/60HZ
 MAXIMUM AMPS: 9.0 (432W) @48VDC
 MAXIMUM OPERATING TEMP: 131°F (55°C)
 MINIMUM OPERATING TEMP: -40°F (-40°C)
 DIMENSIONS: 22.51" (572MM) H X 6.05" (154MM) W X 6.02" (153MM) D
 120 & 230V WEIGHT: 32 LBS (14.5KG)
 48VDC WEIGHT: 22 LBS (10KG)

REV	REVISION	CHG	DATE	APP	DATE	CN #
C	ADDED CFM, dBA, AND CLEARANCE INFO	RCC	3/30/2018			1351
B	ADDED WATTAGE INFO	RCC	1/5/2018			
A	REDRAWN IN SW	RCC	4/12/2017			

ITEM NUMBER	USED ON
MATERIAL	IQ2200MM
EST WT: lbs	
DRAWN BY	DATE
SCALE	1:5

UNLESS OTHERWISE SPECIFIED TOLERANCES
.X ±.060
.XX ±.030
.XXX ±.015
FRACTIONAL ±1/16
ANGULAR ±1/2°
SURFACE FINISH 63
DO NOT SCALE DRAWING DIMENSIONS ARE INCHES

ICE QUBE, INC.
THIS IS A PROPRIETARY DOCUMENT. DO NOT REPRODUCE OR DISCLOSE WITHOUT THE EXPRESS WRITTEN PERMISSION OF ICE QUBE, INC.
IQ2200MM SPEC DRAWING
 DRAWING NUMBER **IQ300406**
 REV **C**



ENCLOSURE AIR INLET
 1/4 - 20 X 1.0" LG PEM STUD (2)

CONDITIONED AIR OUTLET

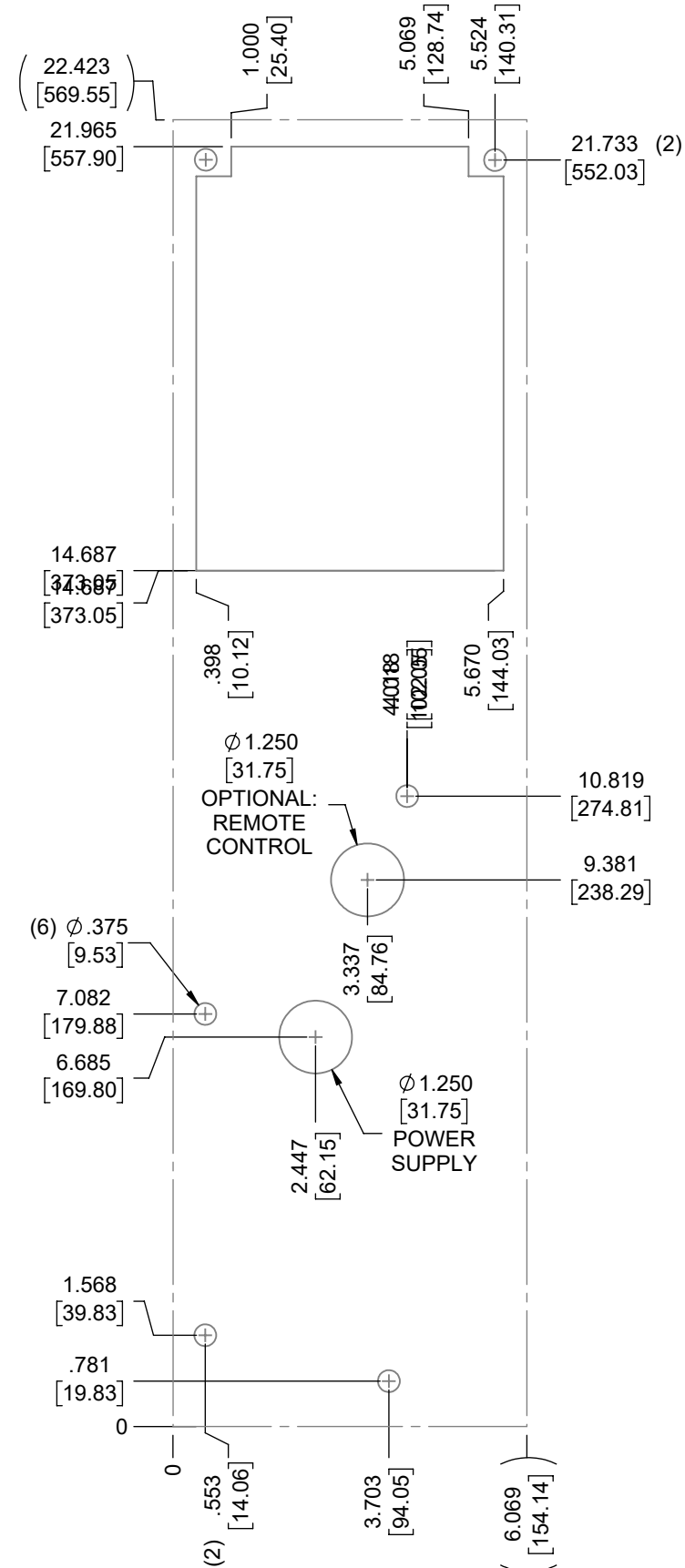
1/4 - 20 PEM NUT (4)

POWER SUPPLY

Ø .394 [10.00] O.D. OVERFLOW DRAIN

.562 [14.27]

IMPORTANT
 GASKET MUST BE APPLIED AS SHOWN FOR PROPER OPERATION AND TO MAINTAIN NEMA INTEGRITY.



EVAP. OUTLET ≈ 200 CFM
 COND. OUTLET ≈ 260 CFM
 SOUND LEVEL @5FT FROM UNIT @ A HT. OF 3FT = 66 dBA
 SOUND LEVEL @2FT FROM UNIT @ A HT. OF 5FT = 68 dBA
 CONDENSER INLET MIN. CLEARANCE 2.06"

ITEM NUMBER	USED ON	UNLESS OTHERWISE SPECIFIED TOLERANCES	<p>THIS IS A PROPRIETARY DOCUMENT. DO NOT REPRODUCE OR DISCLOSE WITHOUT THE EXPRESS WRITTEN PERMISSION OF ICE QUBE, INC.</p>
MATERIAL	IQ2200MM	X ±.060 .XX ±.030 .XXX ±.015 FRACTIONAL ±1/4 ANGULAR ±1/2° SURFACE FINISH 63	
EST WT: lbs	DATE	SCALE 1:3	DESCRIPTION IQ2200MM SPEC DRAWING DRAWING NUMBER IQ300406
DRAWN BY			REV C