

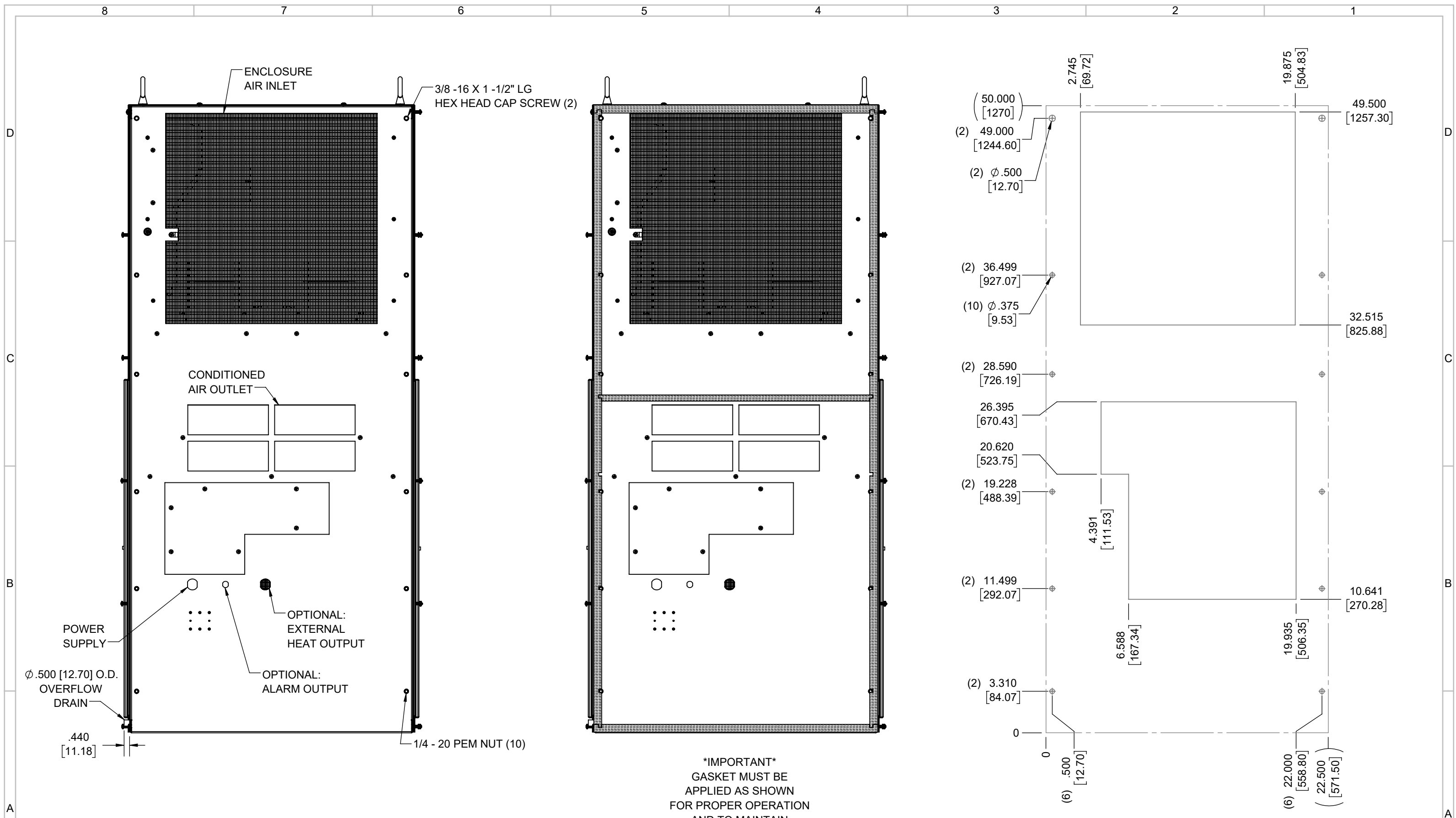
IQ27000V
 COOLING CAPACITY: 27000 BTUH (7918W) @125°F (51.7°C)
 MAXIMUM AMPS: 21.0/23.1 (4830/5313W) @230V/60/50HZ
 MAXIMUM AMPS: 10.5/12.0 (5040/5760W) @480V/60/50HZ
 MAXIMUM OPERATING TEMP: 125°F (51.7°C)
 MINIMUM OPERATING TEMP: -40°F (-40°C)
 DIMENSIONS: 50.10" (1272MM) H X 22.86" (581MM) W X 19.12" (486MM) D
 230V WEIGHT: 290 LBS (131.8KG)
 480V WEIGHT: 330 LBS (150KG)

REV	REVISION	CHG	DATE	APP	DATE	CN #
D	UPDATED VOLTAGE INFO	RCC	3/21/2019			
C	ADDED CFM, dBA, AND CLEARANCE INFO	RCC	3/30/2018			1351
B	ADDED WATTAGE INFO	RCC	1/4/2018			
A	REDRAWN IN SW, ADDED 480V INFO	RCC	4/17/2017			

ITEM NUMBER N/A	USED ON IQ27000V
MATERIAL N/A	
EST WT: lbs	
DRAWN BY RCC	DATE 4/17/2017
	SCALE 1:12

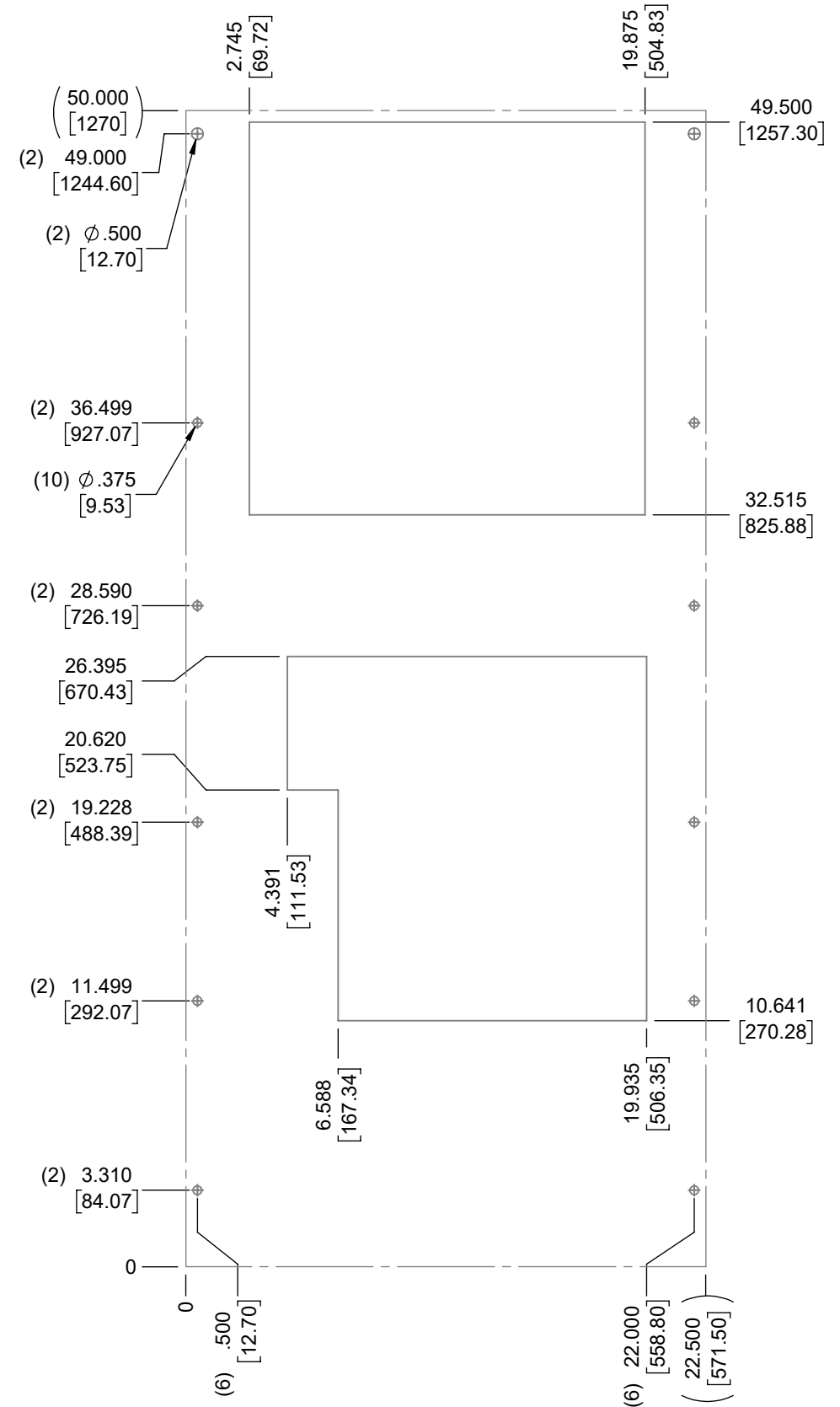
UNLESS OTHERWISE SPECIFIED TOLERANCES
 .X ±.060
 .XX ±.030
 .XXX ±.015
 FRACTIONAL ±1/16
 ANGULAR ±1/2°
 SURFACE FINISH 63
 DO NOT SCALE DRAWING DIMENSIONS ARE INCHES

ICE QUBE, INC.
THIS IS A PROPRIETARY DOCUMENT. DO NOT REPRODUCE OR DISCLOSE WITHOUT THE EXPRESS WRITTEN PERMISSION OF ICE QUBE, INC.
 DESCRIPTION
IQ27000V SPEC DRAWING
 DRAWING NUMBER
IQ320409
 REV
D



IMPORTANT
 GASKET MUST BE
 APPLIED AS SHOWN
 FOR PROPER OPERATION
 AND TO MAINTAIN
 NEMA INTEGRITY.

EVAP. OUTLET ≈ 839 CFM
 COND. OUTLET ≈ 1575 CFM
 SOUND LEVEL @5FT FROM UNIT @ A HT. OF 3FT = 69 dBA
 SOUND LEVEL @2FT FROM UNIT @ A HT. OF 5FT = 68 dBA
 CONDENSER INLET MIN. CLEARANCE 3.06" EACH SIDE



ITEM NUMBER N/A	USED ON IQ27000V	UNLESS OTHERWISE SPECIFIED TOLERANCES X ±.060 .XX ±.030 .XXX ±.015 FRACTIONAL ±1/4 ANGULAR ±1/2°	<p>ICE QUBE, INC. <small>THIS IS A PROPRIETARY DOCUMENT. DO NOT REPRODUCE OR DISCLOSE WITHOUT THE EXPRESS WRITTEN PERMISSION OF ICE QUBE, INC.</small></p>
MATERIAL N/A		<p>EST WT: lbs</p> <p>DRAWN BY: RCC</p> <p>DATE: 4/17/2017</p> <p>SCALE: 1:7</p> <p>SURFACE FINISH: 63</p> <p>DO NOT SCALE DRAWING DIMENSIONS ARE INCHES</p>	
DESCRIPTION IQ27000V SPEC DRAWING			DRAWING NUMBER IQ320409
REV D			