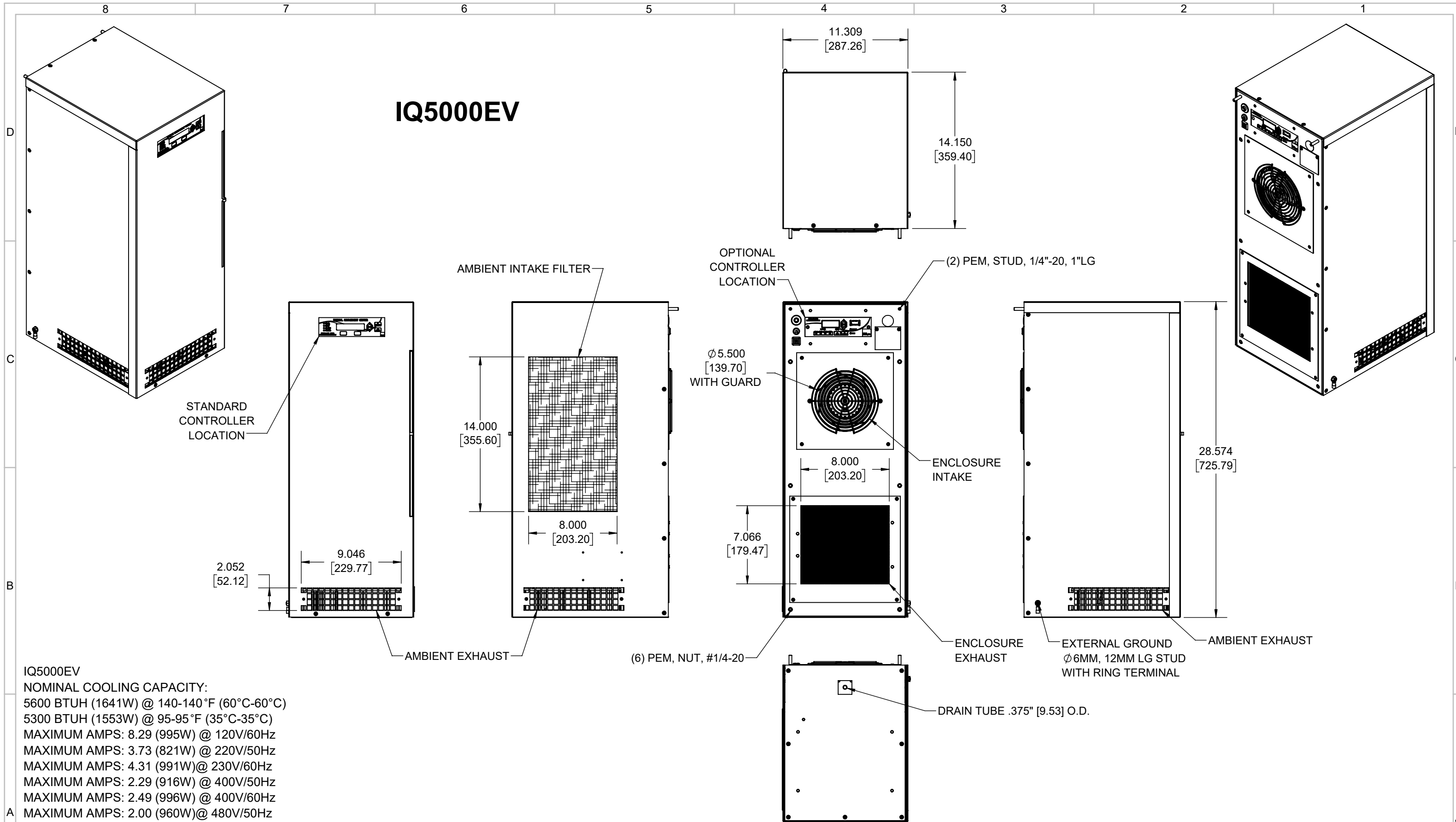


IQ5000EV



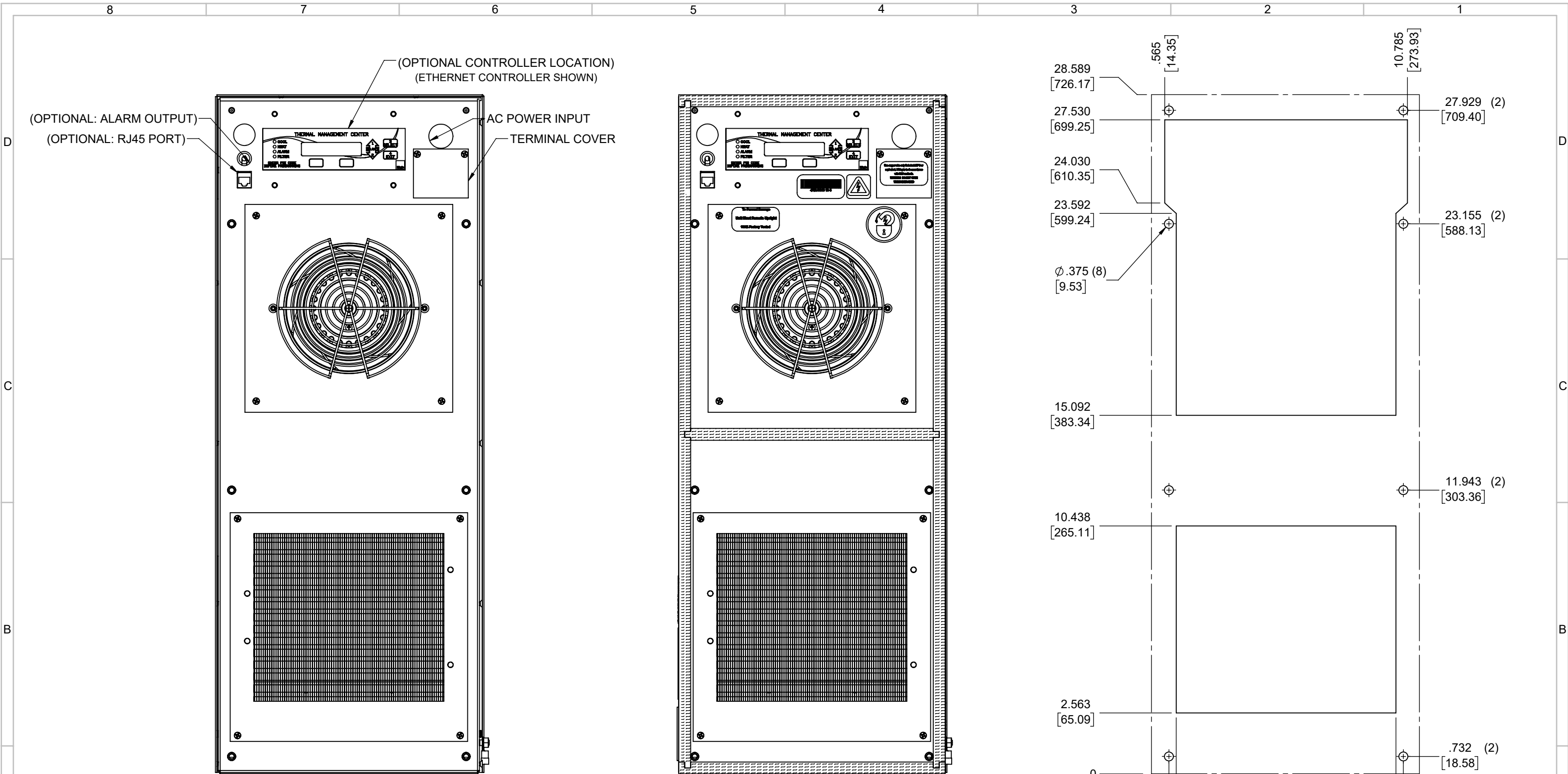
IQ5000EV
 NOMINAL COOLING CAPACITY:
 5600 BTUH (1641W) @ 140-140°F (60°C-60°C)
 5300 BTUH (1553W) @ 95-95°F (35°C-35°C)
 MAXIMUM AMPS: 8.29 (995W) @ 120V/60Hz
 MAXIMUM AMPS: 3.73 (821W) @ 220V/50Hz
 MAXIMUM AMPS: 4.31 (991W) @ 230V/60Hz
 MAXIMUM AMPS: 2.29 (916W) @ 400V/50Hz
 MAXIMUM AMPS: 2.49 (996W) @ 400V/60Hz
 MAXIMUM AMPS: 2.00 (960W) @ 480V/50Hz
 MAXIMUM AMPS: 2.09 (1003W) @ 480V/60Hz
 MAXIMUM OPERATING TEMPERATURE: 140°F (60°C)
 DIMENSIONS: 28.584" (726MM) H x 11.309" (287MM) W x 14.150" (359MM) D
 WEIGHT: 97.5 LBS (44.2KG) @ 120/220/230V
 WEIGHT: 117.5 LBS (53.3KG) @ 400/480V
 REFRIGERANT CHARGE: R134-A 24OZ (680G)

REV	DESCRIPTION	CHG	DATE	APP	DATE	CN #
F	ADDED CFM, dBA, AND CLEARANCE INFO	RCC	3/22/2018	ART	5/11/2018	1347
E	UPDATED UNIT DATA	JGG	12/15/2017	ART	12/15/2017	1336

ITEM NUMBER N/A	USED ON IQ5000EV
MATERIAL N/A	
EST WT: lbs	
DRAWN BY ART	DATE 1/20/2016
	SCALE 1:8

UNLESS OTHERWISE SPECIFIED TOLERANCES
.X ±.060
.XX ±.030
.XXX ±.015
FRACTIONAL ±1/16
ANGULAR ±1/2°
SURFACE FINISH 63
DO NOT SCALE DRAWING DIMENSIONS ARE INCHES

ICE QUBE, INC.
THIS IS A PROPRIETARY DOCUMENT. DO NOT REPRODUCE OR DISCLOSE WITHOUT THE EXPRESS WRITTEN PERMISSION OF ICE QUBE, INC.
 DESCRIPTION
IQ5000EV SPEC DRAWING
 DRAWING NUMBER
IQ350928
 REV
F



IMPORTANT
GASKET MUST BE APPLIED AS SHOWN FOR PROPER OPERATION AND TO MAINTAIN ENCLOSURE INTEGRITY

EVAP. OUTLET ≈ 360 CFM
 COND. OUTLET ≈ 510 CFM
 SOUND LEVEL @5FT FROM UNIT @ A HT. OF 3FT = 62 dBA
 SOUND LEVEL @2FT FROM UNIT @ A HT. OF 5FT = 65 dBA
 CONDENSER INLET MIN. CLEARANCE 2.54"

ITEM NUMBER N/A	USED ON IQ5000EV	UNLESS OTHERWISE SPECIFIED TOLERANCES X ±.060 XX ±.030 XXX ±.015	ICE QUBE, INC. THIS IS A PROPRIETARY DOCUMENT. DO NOT REPRODUCE OR DISCLOSE WITHOUT THE EXPRESS WRITTEN PERMISSION OF ICE QUBE, INC.
MATERIAL N/A		FRACTIONAL ±1/4 ANGULAR ±1/2°	
EST WT: DRAWN BY ART	DATE 1/20/2016	SCALE 1:4	DESCRIPTION IQ5000EV SPEC DRAWING
			DRAWING NUMBER IQ350928
			REV F