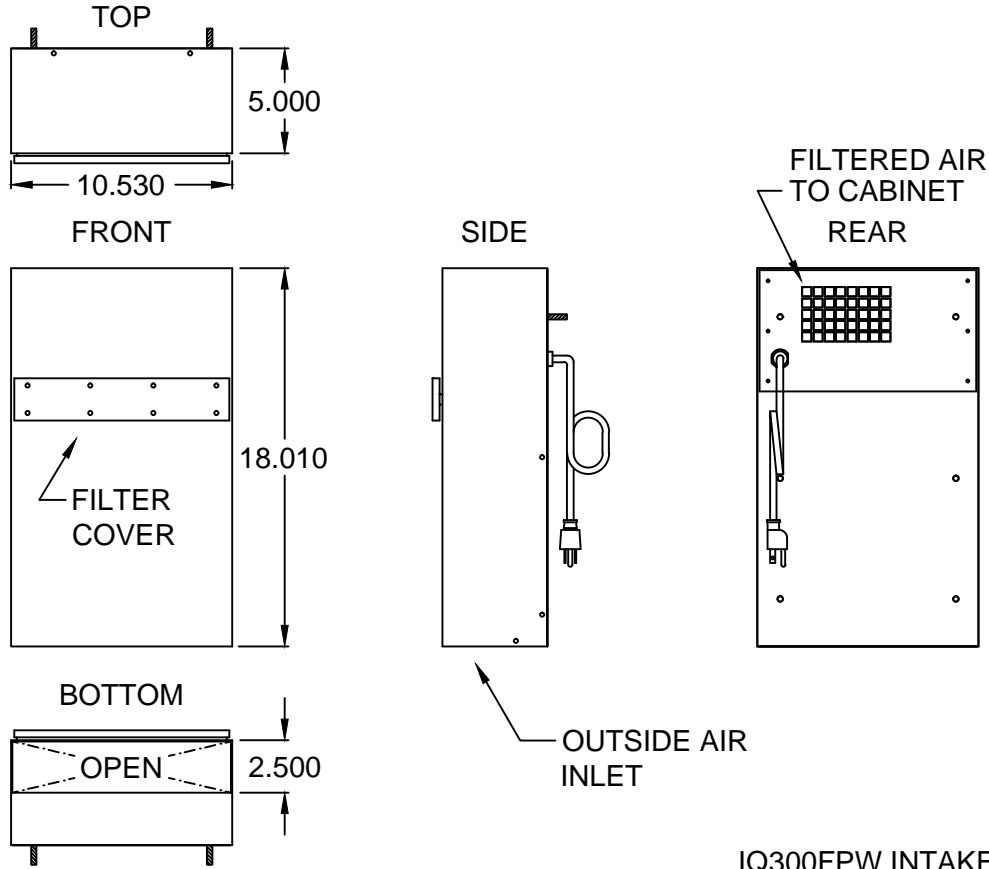
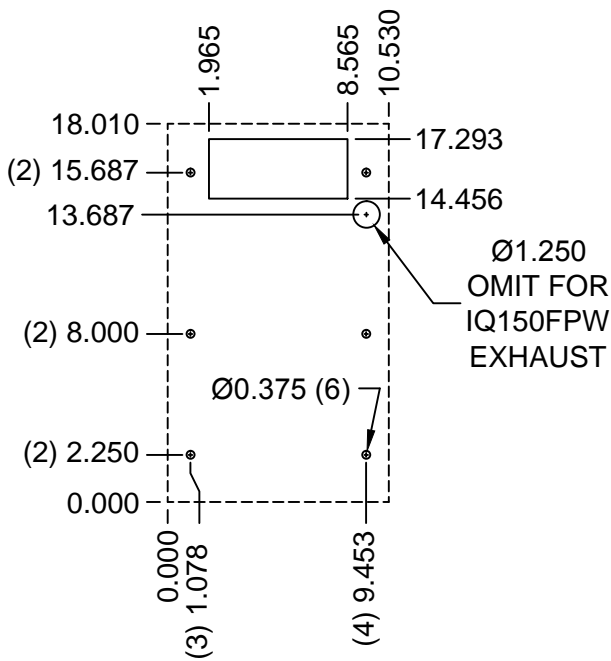


SPEC DRAWING IQ300FPW
 310/268 CFM FREE AIR @ 120/110 VAC 60/50HZ
 310/268 CFM FREE AIR @ 230/220 VAC 60/50HZ
 MAXIMUM AMPS : 3.8/4.2 @ 120/110 VAC 60/50 HZ
 MAXIMUM AMPS : 1.5/2.0 @ 230/220 VAC 60/50 HZ
 MAXIMUM OPERATING TEMPERATURE : 140°F

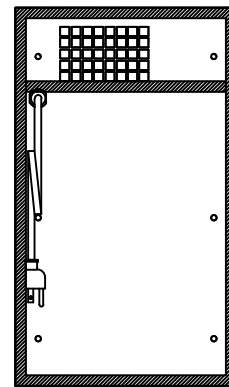
INTAKE CABINET



IQ300FPW INTAKE CUT OUT DRAWING



IQ300FPW INTAKE GASKET DRAWING



IMPORTANT
 GASKET MUST BE APPLIED AS SHOWN FOR PROPER OPERATION AND TO MAINTAIN NEMA INTEGRITY

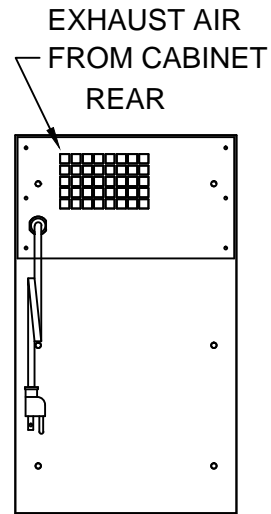
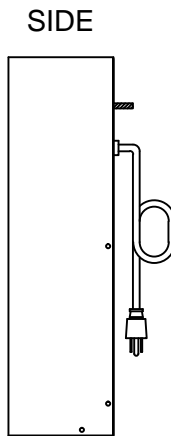
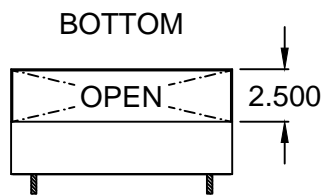
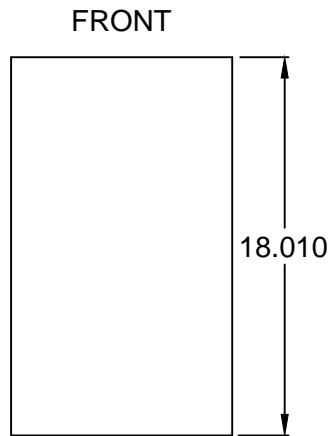
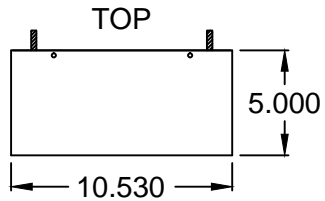
0	INITIAL RELEASE	10-3-16	RCC
REV	DESCRIPTION	DATE	CHECKED
REVISIONS			

PROPRIETARY DRAWING
 THIS DRAWING IS THE PROPERTY OF ICE QUBE, INC. AND IS NOT TO BE DUPLICATED OR ALTERED WITHOUT AUTHORIZATION OF ICE QUBE, INC.

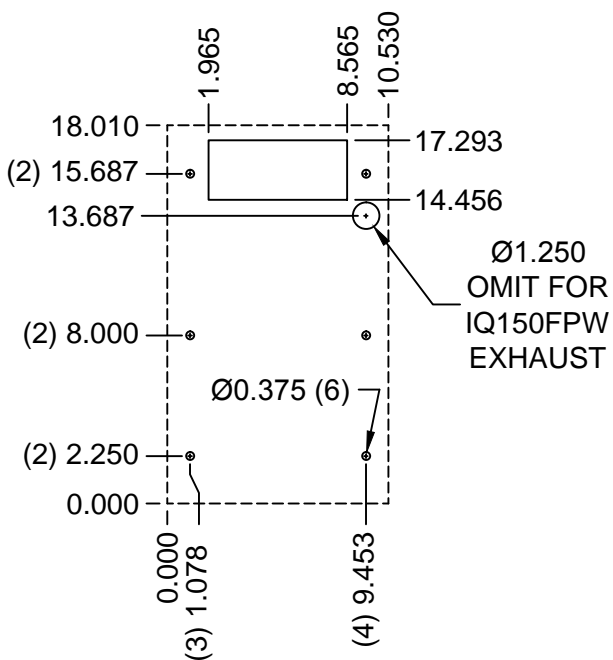
DRAWN	GFD	SCALE	NONE
DATE	5-15-08		
SHEET 1 OF 2			

ICEqube
INDUSTRIAL COOLING EQUIPMENT
 140 WILSON AVENUE
 GREENBURGH, PA 15601
 724-837-2224 • 1-888-867-6234
 FAX: 724-837-3388
IQ300FPW
IQ351157 0

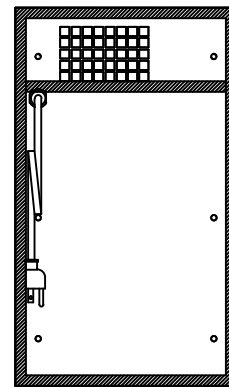
EXHAUST CABINET



IQ300FPW EXHAUST CUT OUT DRAWING



IQ300FPW EXHAUST GASKET DRAWING



IMPORTANT
GASKET MUST BE APPLIED AS SHOWN FOR PROPER OPERATION AND TO MAINTAIN NEMA INTEGRITY