

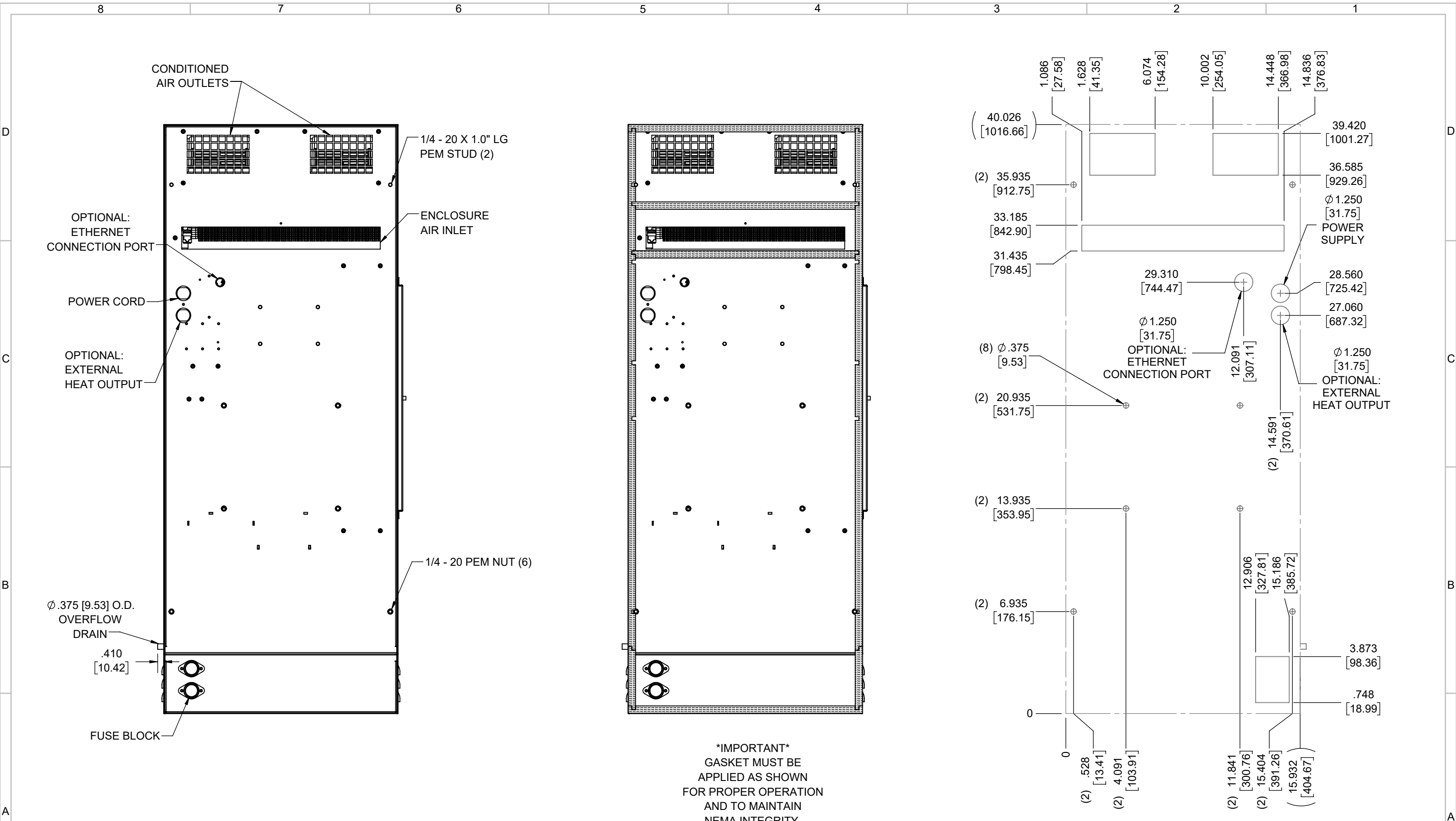
IQ6000V16  
 COOLING CAPACITY: 6000 BTUH (1760W) @131°F (55°C)  
 MAXIMUM AMPS: 2.5 (1200W) @480V/60HZ  
 MAXIMUM OPERATING TEMP: 131°F (55°C)  
 MINIMUM OPERATING TEMP: -40°F (-40°C)  
 DIMENSIONS: 40.10" (1017MM) H X 15.93" (405MM) W X 7.34" (186MM) D  
 WEIGHT: 105 LBS (47.7KG)

REV	REVISION	CHG	DATE	APP	DATE	CN #
C	ADDED CFM, dBA, AND CLEARANCE INFO	RCC	3/23/2018			1351
B	ADDED WATTAGE INFO	RCC	12/18/2017			
A	REDRAWN IN SW	RCC	4/4/2017			

ITEM NUMBER	N/A	USED ON	IQ6000V16
MATERIAL	N/A		
EST WT:	lbs		
DRAWN BY	RCC	DATE	4/4/2017
		SCALE	1:8

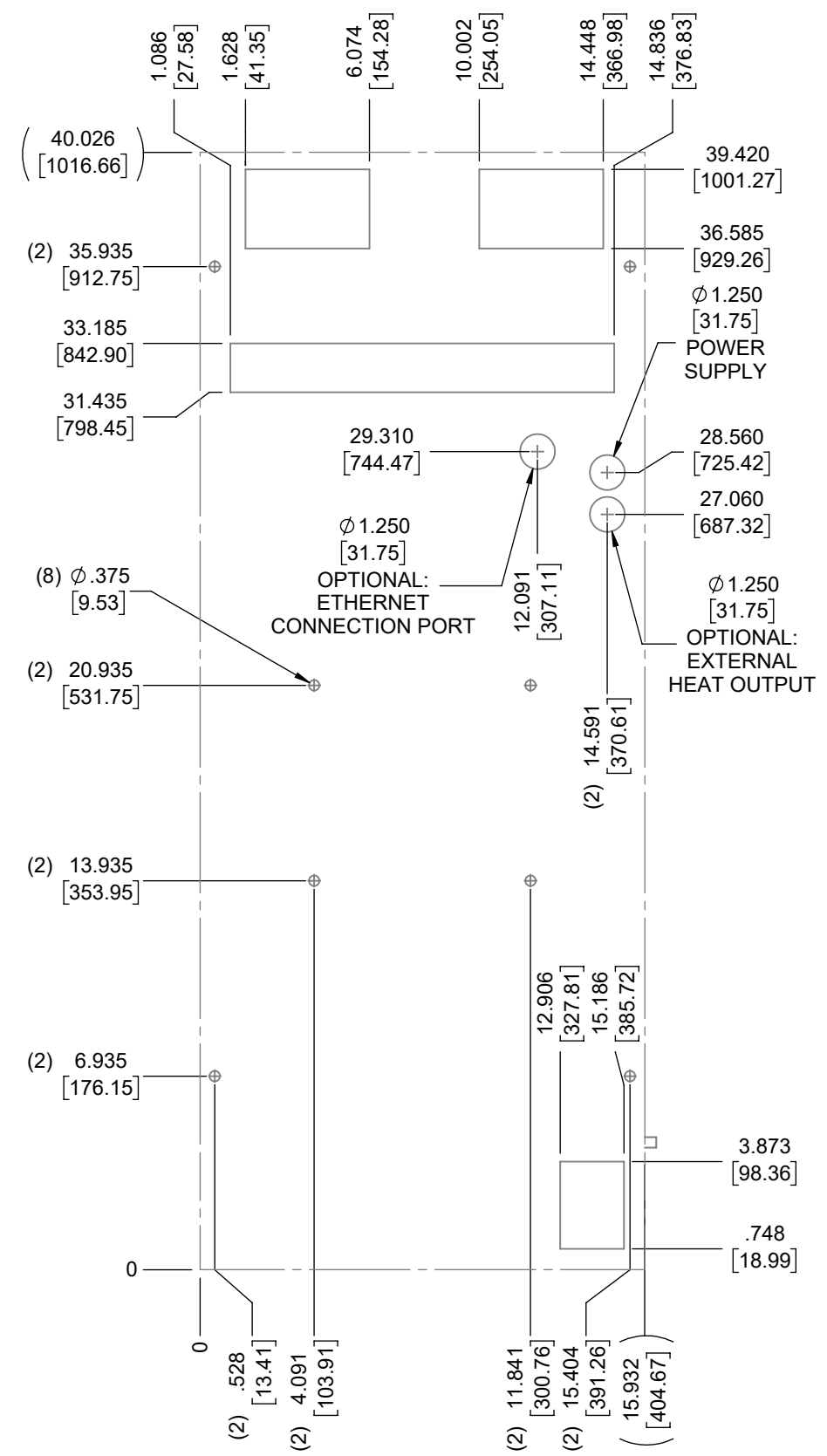
UNLESS OTHERWISE SPECIFIED TOLERANCES	
.X	±.060
.XX	±.030
.XXX	±.015
FRACTIONAL	±1/16
ANGULAR	±1/2°
SURFACE FINISH 63	
DO NOT SCALE DRAWING DIMENSIONS ARE INCHES	

**ICE QUBE, INC.**  
THIS IS A PROPRIETARY DOCUMENT. DO NOT REPRODUCE OR DISCLOSE WITHOUT THE EXPRESS WRITTEN PERMISSION OF ICE QUBE, INC.  
 DESCRIPTION  
**IQ6000V16 SPEC DRAWING, 480V**  
 DRAWING NUMBER  
**IQ351382**



**\*IMPORTANT\***  
 GASKET MUST BE  
 APPLIED AS SHOWN  
 FOR PROPER OPERATION  
 AND TO MAINTAIN  
 NEMA INTEGRITY.

EVAP. OUTLET ≈ 236 CFM  
 COND. OUTLET ≈ 410 CFM  
 SOUND LEVEL @5FT FROM UNIT @ A HT. OF 3FT = 66 dBA  
 SOUND LEVEL @2FT FROM UNIT @ A HT. OF 5FT = 64 dBA  
 CONDENSER INLET MIN. CLEARANCE 2.34"



ITEM NUMBER N/A	USED ON IQ6000V16	UNLESS OTHERWISE SPECIFIED TOLERANCES X ±.060 .XX ±.030 .XXX ±.015 FRACTIONAL ±1/4 ANGULAR ±1/2°	 <small>THIS IS A PROPRIETARY DOCUMENT. DO NOT REPRODUCE OR DISCLOSE WITHOUT THE EXPRESS WRITTEN PERMISSION OF ICE QUBE, INC.</small> <b>DESCRIPTION</b> IQ6000V16 SPEC DRAWING, 480V
MATERIAL N/A	EST WT: lbs	SURFACE FINISH 63	
DRAWN BY RCC	DATE 4/4/2017	SCALE 1:6	<small>DRAWING NUMBER</small> <b>IQ351382</b>
			<small>REV</small> <b>C</b>