

IQ1500VXS
 COOLING CAPACITY: 1500 BTUH (440W) @131 °F (55 °C)
 MAXIMUM AMPS: 4.0 (480W) @120V/60HZ
 MAXIMUM AMPS: 1.9 (437W) @230V/60HZ
 MAXIMUM OPERATING TEMP: 131 °F (55 °C)
 MINIMUM OPERATING TEMP: -40 °F (-40 °C)
 DIMENSIONS: 30.00" (762MM) H X 6.50" (165MM) W X 11.50" (292MM) D
 WEIGHT: 45 LBS (20.5KG)

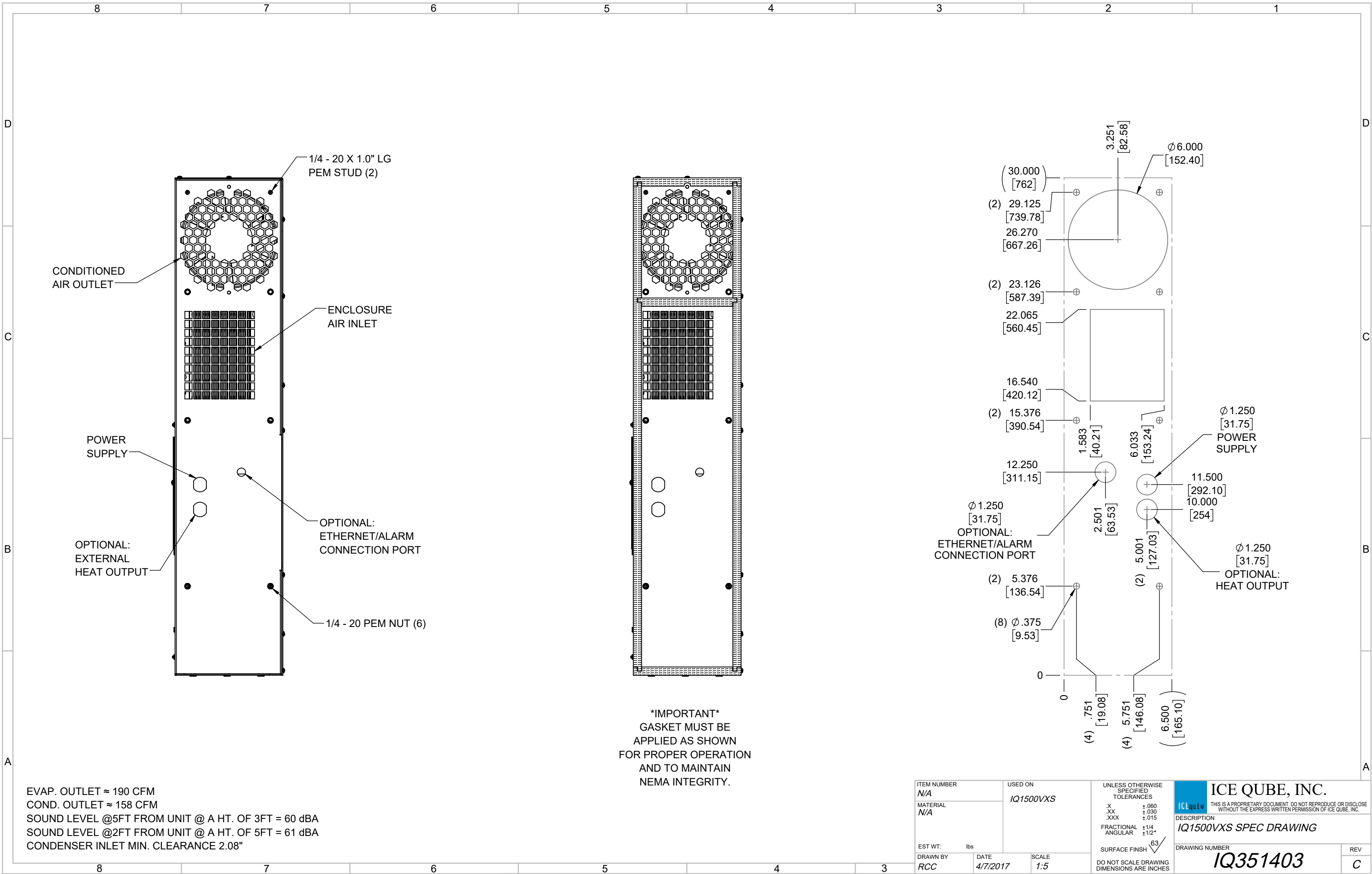
REV	REVISION	CHG	DATE	APP	DATE	CN #
C	ADDED CFM, dBA, AND CLEARANCE INFO	RCC	3/26/2018			1351
B	ADDED WATTAGE INFO	RCC	12/29/2017			
A	REDRAWN IN SW	RCC	4/7/2017			

ITEM NUMBER	N/A
MATERIAL	N/A
EST WT:	lbs
DRAWN BY	RCC

USED ON	IQ1500VXS
DATE	4/7/2017
SCALE	1:6

UNLESS OTHERWISE SPECIFIED TOLERANCES	
.X	±.060
.XX	±.030
.XXX	±.015
FRACTIONAL	±1/16
ANGULAR	±1/2°
SURFACE FINISH	63
DO NOT SCALE DRAWING DIMENSIONS ARE INCHES	

ICE QUBE, INC.
THIS IS A PROPRIETARY DOCUMENT. DO NOT REPRODUCE OR DISCLOSE WITHOUT THE EXPRESS WRITTEN PERMISSION OF ICE QUBE, INC.
 DESCRIPTION
IQ1500VXS SPEC DRAWING
 DRAWING NUMBER
IQ351403
 REV
C



EVAP. OUTLET ≈ 190 CFM
 COND. OUTLET ≈ 158 CFM
 SOUND LEVEL @5FT FROM UNIT @ A HT. OF 3FT = 60 dBA
 SOUND LEVEL @2FT FROM UNIT @ A HT. OF 5FT = 61 dBA
 CONDENSER INLET MIN. CLEARANCE 2.08"

ITEM NUMBER N/A	USED ON IQ1500VXS	UNLESS OTHERWISE SPECIFIED TOLERANCES X ±.060 .XX ±.030 .XXX ±.015 FRACTIONAL ±1/4 ANGULAR ±1/2°	<p>ICE QUBE, INC. <small>THIS IS A PROPRIETARY DOCUMENT. DO NOT REPRODUCE OR DISCLOSE WITHOUT THE EXPRESS WRITTEN PERMISSION OF ICE QUBE, INC.</small></p>
MATERIAL N/A		<p>EST WT: lbs</p> <p>DRAWN BY: RCC</p> <p>DATE: 4/7/2017</p> <p>SCALE: 1:5</p> <p>DO NOT SCALE DRAWING DIMENSIONS ARE INCHES</p>	
DESCRIPTION IQ1500VXS SPEC DRAWING			DRAWING NUMBER IQ351403
			REV C