

IQ1800VXS  
 COOLING CAPACITY: 1800 BTUH (528W) @131°F (55°C)  
 MAXIMUM AMPS: 4.0 (480W) @120V/60HZ  
 MAXIMUM AMPS: 2.0 (460W) @230V/60HZ  
 MAXIMUM OPERATING TEMP: 131°F (55°C)  
 MINIMUM OPERATING TEMP: -40°F (-40°C)  
 DIMENSIONS: 30.00" (762MM) H X 6.50" (165MM) W X 11.50" (292MM) D  
 WEIGHT: 45 LBS (20.5KG)

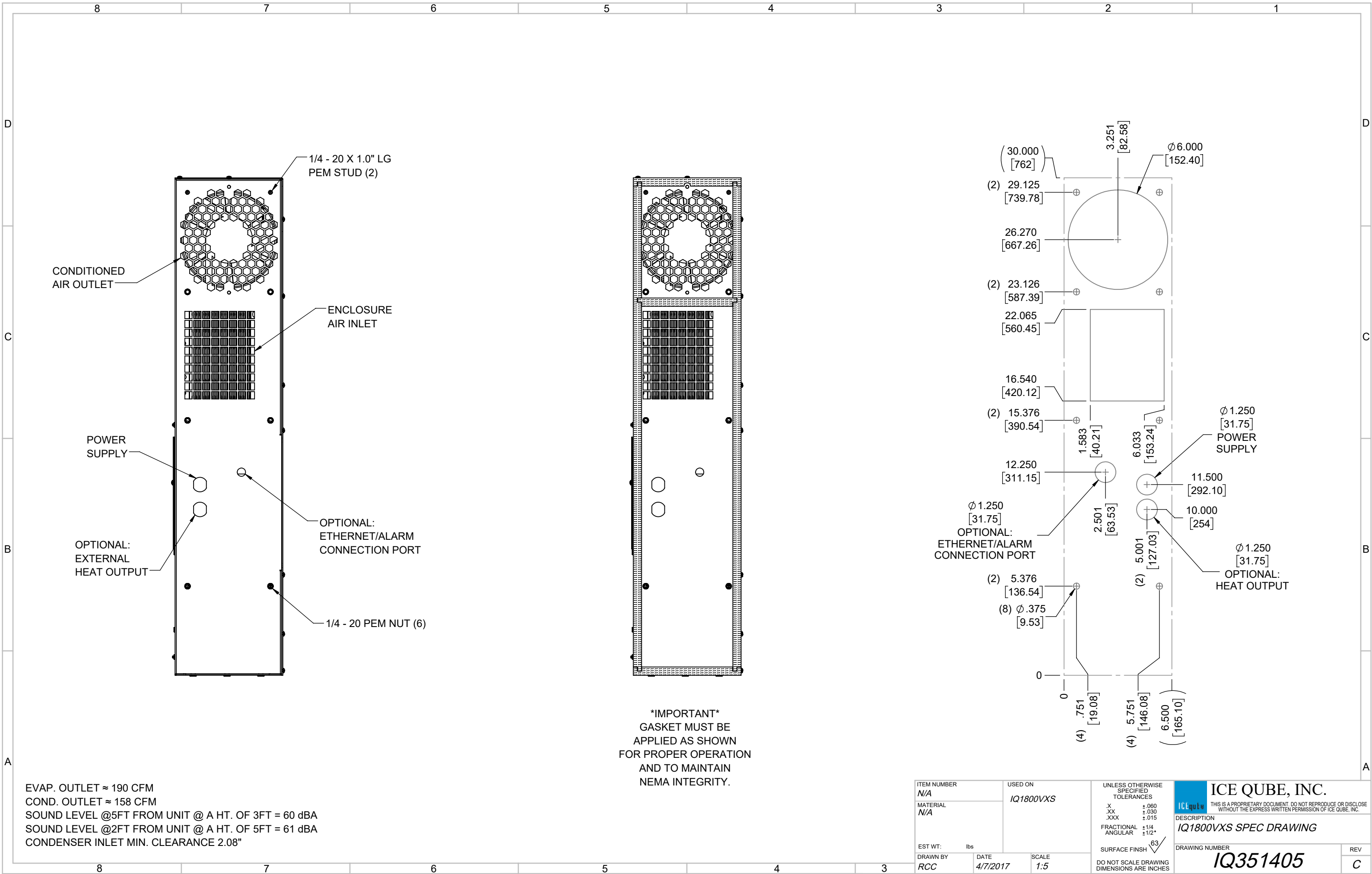
| REV | REVISION                           | CHG | DATE      | APP | DATE | CN # |
|-----|------------------------------------|-----|-----------|-----|------|------|
| C   | ADDED CFM, dBA, AND CLEARANCE INFO | RCC | 3/26/2018 |     |      | 1351 |
| B   | ADDED WATTAGE INFO                 | RCC | 1/2/2018  |     |      |      |
| A   | REDRAWN IN SW                      | RCC | 4/7/2017  |     |      |      |

|             |     |
|-------------|-----|
| ITEM NUMBER | N/A |
| MATERIAL    | N/A |
| EST WT:     | lbs |
| DRAWN BY    | RCC |

|         |           |
|---------|-----------|
| USED ON | IQ1800VXS |
| DATE    | 4/7/2017  |
| SCALE   | 1:6       |

|  |       |
|--|-------|
| UNLESS OTHERWISE SPECIFIED TOLERANCES      |       |
| .X   | ±.060 |
| .XX  | ±.030 |
| .XXX                                       | ±.015 |
| FRACTIONAL                                 | ±1/16 |
| ANGULAR                                    | ±1/2° |
| SURFACE FINISH                             | 63    |
| DO NOT SCALE DRAWING DIMENSIONS ARE INCHES |       |

**ICE QUBE, INC.**  
THIS IS A PROPRIETARY DOCUMENT. DO NOT REPRODUCE OR DISCLOSE WITHOUT THE EXPRESS WRITTEN PERMISSION OF ICE QUBE, INC.  
 DESCRIPTION  
**IQ1800VXS SPEC DRAWING**  
 DRAWING NUMBER  
**IQ351405**  
 REV  
**C**



**\*IMPORTANT\***  
 GASKET MUST BE  
 APPLIED AS SHOWN  
 FOR PROPER OPERATION  
 AND TO MAINTAIN  
 NEMA INTEGRITY.

EVAP. OUTLET ≈ 190 CFM  
 COND. OUTLET ≈ 158 CFM  
 SOUND LEVEL @5FT FROM UNIT @ A HT. OF 3FT = 60 dBA  
 SOUND LEVEL @2FT FROM UNIT @ A HT. OF 5FT = 61 dBA  
 CONDENSER INLET MIN. CLEARANCE 2.08"

|                            |                      |  |   |
|----------------------------|----------------------|--|---|
| ITEM NUMBER<br>N/A         | USED ON<br>IQ1800VXS | UNLESS OTHERWISE SPECIFIED TOLERANCES<br>X ±.060<br>.XX ±.030<br>.XXX ±.015<br>FRACTIONAL ±1/4<br>ANGULAR ±1/2°<br>SURFACE FINISH 63 | <p>ICE QUBE, INC.<br/> <small>THIS IS A PROPRIETARY DOCUMENT. DO NOT REPRODUCE OR DISCLOSE WITHOUT THE EXPRESS WRITTEN PERMISSION OF ICE QUBE, INC.</small></p> |
| MATERIAL<br>N/A            |                      | DO NOT SCALE DRAWING DIMENSIONS ARE INCHES   |   |
| EST WT:<br>DRAWN BY<br>RCC | DATE<br>4/7/2017     | SCALE<br>1:5   | DESCRIPTION<br><b>IQ1800VXS SPEC DRAWING</b><br>DRAWING NUMBER<br><b>IQ351405</b>   |
|                            |                      |  | REV<br>C  |