

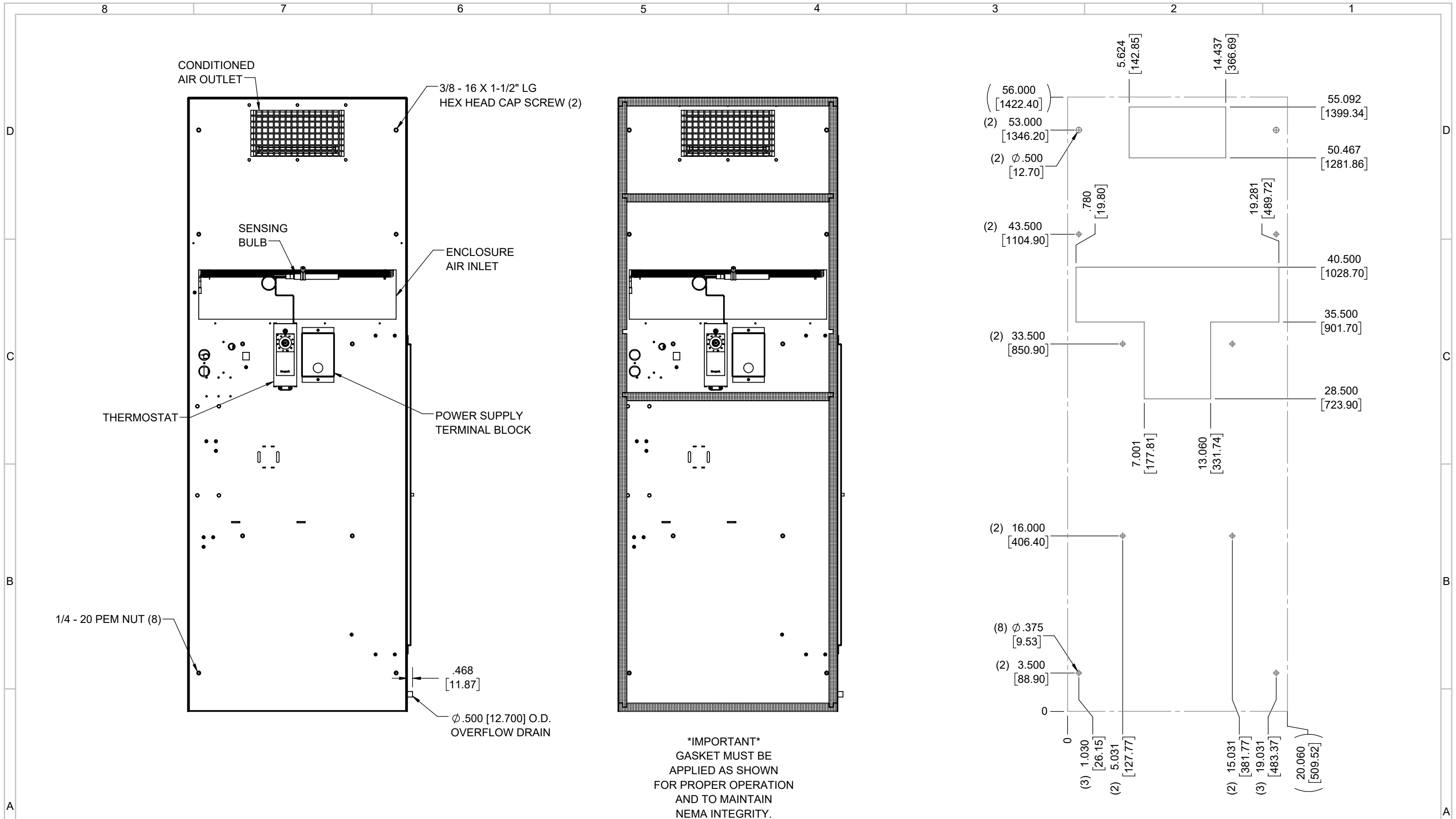
IQ17000V  
 COOLING CAPACITY: 17000 BTUH (4985W) @131°F (55°C)  
 MAXIMUM AMPS: 15.5/17.1 (3565/3933W) @230V/60/50HZ  
 MAXIMUM OPERATING TEMP: 131°F (55°C)  
 MINIMUM OPERATING TEMP: -4°F (-20°C)  
 DIMENSIONS: 56.00" (1422MM) H X 20.06" (510MM) W X 14.31" (363MM) D  
 WEIGHT: 218 LBS (99.1KG)

REV	REVISION	CHG	DATE	APP	DATE	CN #
C	ADDED CFM, dBA, AND CLEARANCE INFO	RCC	3/27/2018			1351
B	ADDED 50HZ AND WATTAGE INFO	RCC	12/27/2017			
A	REDRAWN IN SW	RCC	4/7/2017			

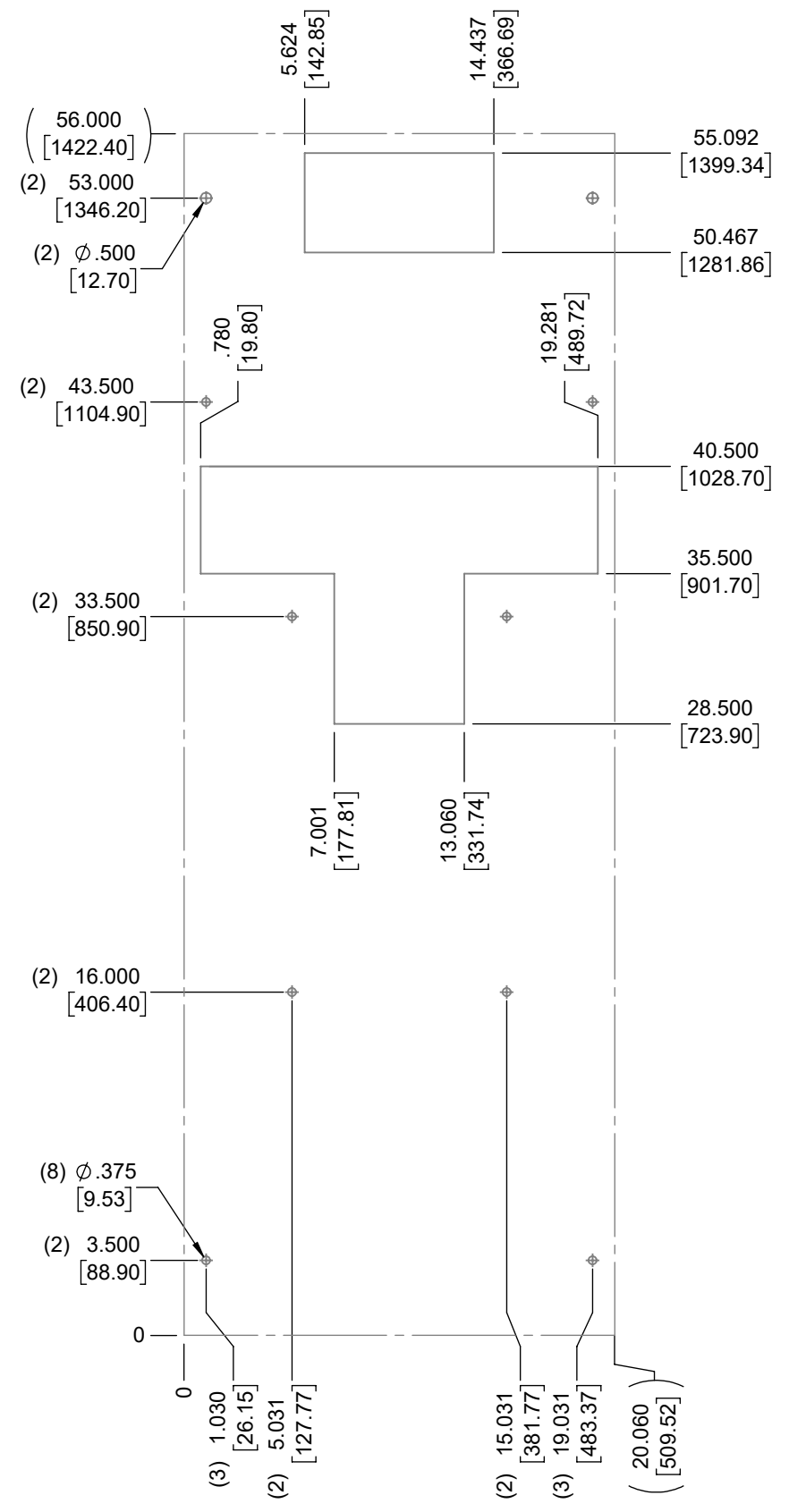
ITEM NUMBER N/A	USED ON IQ17000V
MATERIAL N/A	
EST WT: lbs	
DRAWN BY RCC	DATE 4/7/2017
	SCALE 1:13

UNLESS OTHERWISE SPECIFIED TOLERANCES  
 .X ±.060  
 .XX ±.030  
 .XXX ±.015  
 FRACTIONAL ±1/16  
 ANGULAR ±1/2°  
 SURFACE FINISH 63  
 DO NOT SCALE DRAWING DIMENSIONS ARE INCHES

**ICE QUBE, INC.**  
THIS IS A PROPRIETARY DOCUMENT. DO NOT REPRODUCE OR DISCLOSE WITHOUT THE EXPRESS WRITTEN PERMISSION OF ICE QUBE, INC.  
 DESCRIPTION  
**IQ17000V SPEC DRAWING XP2**  
 DRAWING NUMBER  
**IQ351409**  
 REV  
**C**



EVAP. OUTLET ≈ 727 CFM  
 COND. OUTLET ≈ 1100 CFM  
 SOUND LEVEL @5FT FROM UNIT @ A HT. OF 3FT = 84 dBA  
 SOUND LEVEL @2FT FROM UNIT @ A HT. OF 5FT = 83 dBA  
 CONDENSER INLET MIN. CLEARANCE 4.55"



**\*IMPORTANT\***  
 GASKET MUST BE  
 APPLIED AS SHOWN  
 FOR PROPER OPERATION  
 AND TO MAINTAIN  
 NEMA INTEGRITY.

ITEM NUMBER N/A	USED ON IQ17000V	UNLESS OTHERWISE SPECIFIED TOLERANCES X ±.060 .XX ±.030 .XXX ±.015 FRACTIONAL ±1/4 ANGULAR ±1/2°	<p>THIS IS A PROPRIETARY DOCUMENT. DO NOT REPRODUCE OR DISCLOSE WITHOUT THE EXPRESS WRITTEN PERMISSION OF ICE QUBE, INC.</p>
MATERIAL N/A		DESCRIPTION IQ17000V SPEC DRAWING XP2	
EST WT: lbs	DATE 4/7/2017	SCALE 1:8	DRAWING NUMBER IQ351409
DO NOT SCALE DRAWING DIMENSIONS ARE INCHES			REV C