

**IQ2400VXS**  
 COOLING CAPACITY: 2400 BTUH (704W) @125°F (51.7°C)  
 MAXIMUM AMPS: 1.7 (816W) @480V/60HZ  
 MAXIMUM OPERATING TEMP: 125°F (51.7°C)  
 MINIMUM OPERATING TEMP: -4°F (-20°C)  
 DIMENSIONS: 28.03" (712MM) H X 10.03" (255MM) W X 10.00" (254MM) D  
 WEIGHT: 94 LBS (42.7KG)

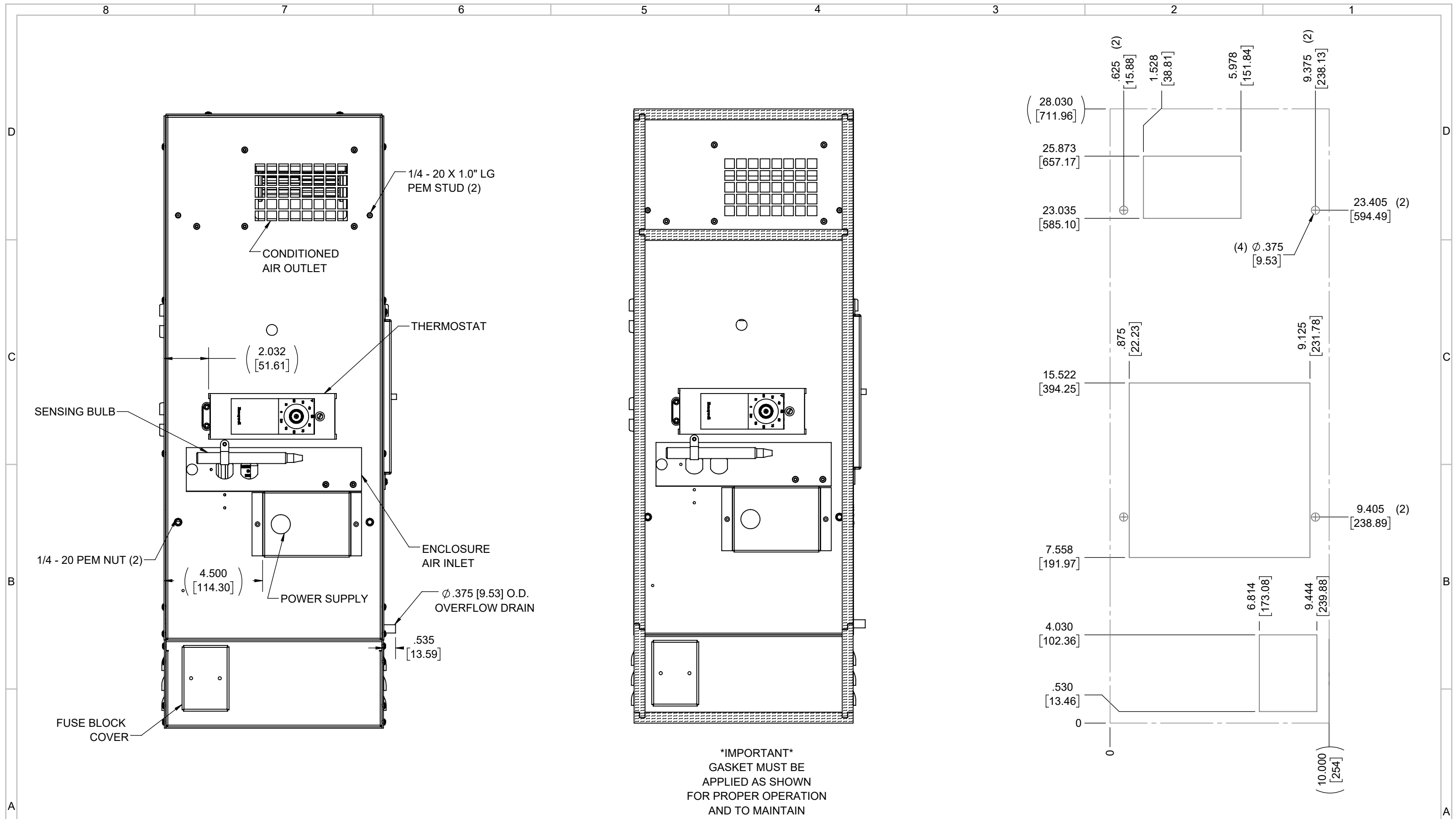
REV	REVISION	CHG	DATE	APP	DATE	CN #
C	ADDED CFM, dBA, AND CLEARANCE INFO	RCC	3/28/2018			1351
B	ADDED WATTAGE INFO	RCC	1/2/2018			
A	REDRAWN IN SW	RCC	4/10/2017			

ITEM NUMBER	N/A
MATERIAL	N/A
EST WT:	lbs
DRAWN BY	RCC

USED ON	IQ2400VXS
DATE	4/10/2017
SCALE	1:8

UNLESS OTHERWISE SPECIFIED TOLERANCES	
X	±.060
.XX	±.030
.XXX	±.015
FRACTIONAL	±1/16
ANGULAR	±1/2°
SURFACE FINISH	63
DO NOT SCALE DRAWING DIMENSIONS ARE INCHES	

**ICE QUBE, INC.**  
THIS IS A PROPRIETARY DOCUMENT. DO NOT REPRODUCE OR DISCLOSE WITHOUT THE EXPRESS WRITTEN PERMISSION OF ICE QUBE, INC.  
 DESCRIPTION  
**IQ2400VXS SPEC DRAWING, 480V XP2**  
 DRAWING NUMBER  
**IQ351418**



**\*IMPORTANT\***  
 GASKET MUST BE APPLIED AS SHOWN FOR PROPER OPERATION AND TO MAINTAIN NEMA INTEGRITY.

EVAP. OUTLET ≈ 158 CFM  
 COND. OUTLET ≈ 236 CFM  
 SOUND LEVEL @5FT FROM UNIT @ A HT. OF 3FT = 55 dBA  
 SOUND LEVEL @2FT FROM UNIT @ A HT. OF 5FT = 56 dBA  
 CONDENSER INLET MIN. CLEARANCE 1.91"

ITEM NUMBER N/A	USED ON IQ2400VXS	UNLESS OTHERWISE SPECIFIED TOLERANCES X ±.060 .XX ±.030 .XXX ±.015 FRACTIONAL ±1/4 ANGULAR ±1/2°	<p>ICE QUBE, INC.  <small>THIS IS A PROPRIETARY DOCUMENT. DO NOT REPRODUCE OR DISCLOSE WITHOUT THE EXPRESS WRITTEN PERMISSION OF ICE QUBE, INC.</small></p>
MATERIAL N/A		<p>DESCRIPTION  <b>IQ2400VXS SPEC DRAWING, 480V XP2</b></p>	
EST WT: lbs		SURFACE FINISH 63	DRAWING NUMBER <b>IQ351418</b>
DRAWN BY RCC	DATE 4/10/2017	SCALE 1:4	REV C