

IQ3000VS  
 COOLING CAPACITY: 3000 BTUH (880W) @131°F (55°C)  
 MAXIMUM AMPS: 1.6 (768W) @480V/60HZ  
 MAXIMUM OPERATING TEMP: 131°F (55°C)  
 MINIMUM OPERATING TEMP: -4°F (-20°C)  
 DIMENSIONS: 34.12" (867MM) H X 12.28" (312MM) W X 6.34" (161MM) D  
 WEIGHT: 90 LBS (40.9KG)

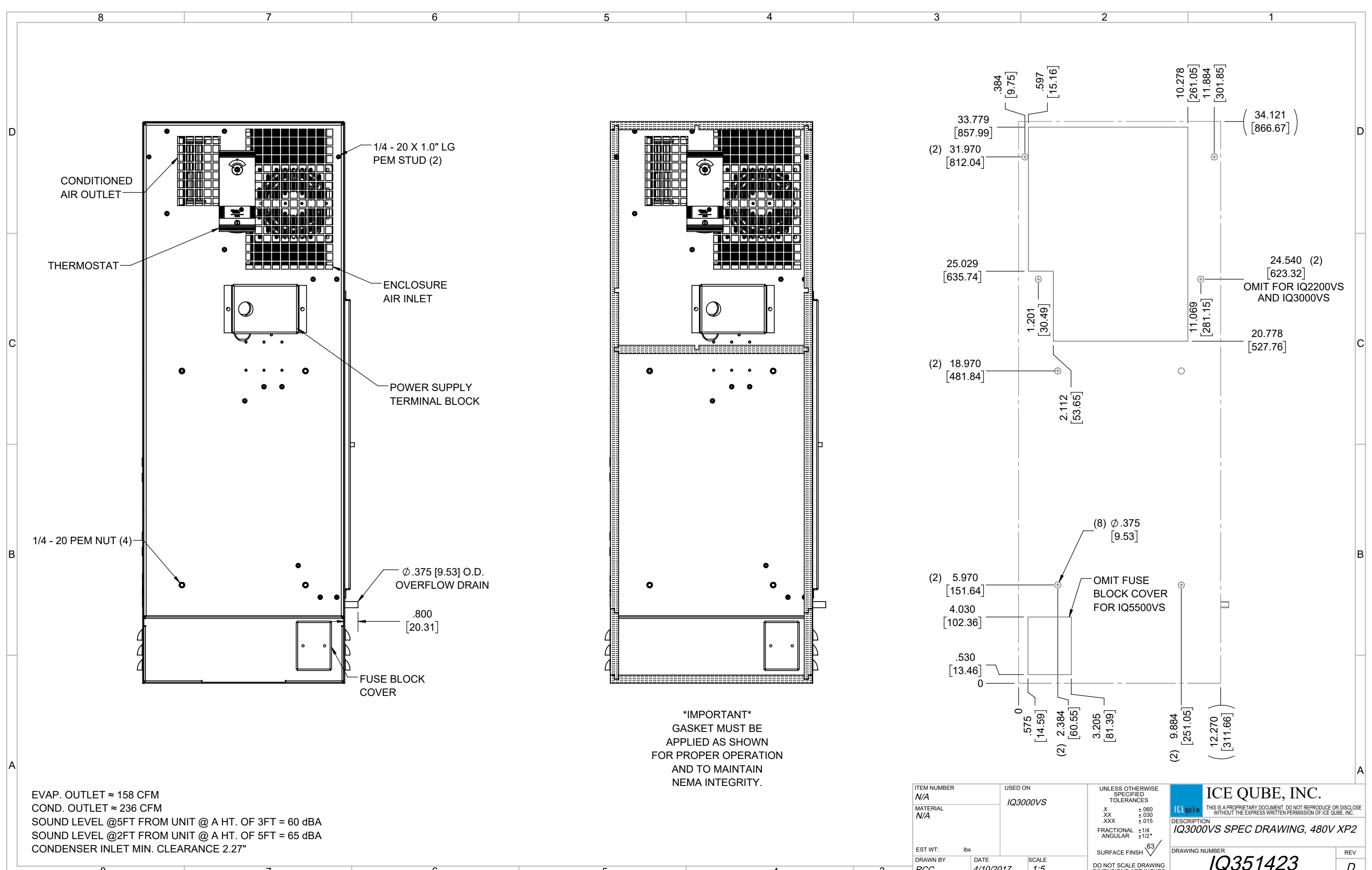
REV	REVISION	CHG	DATE	APP	DATE	CN #
D	CHANGED THERMOSTAT DIMENSIONS	NAT	2/17/2021			ECN-1434
C	ADDED CFM, dBA, AND CLEARANCE INFO	RCC	3/28/2018			1351
B	ADDED WATTAGE INFO	RCC	1/2/2018			
A	REDRAWN IN SW	RCC	4/10/2017			

ITEM NUMBER	N/A
MATERIAL	N/A
EST WT:	lbs
DRAWN BY	RCC
DATE	4/10/2017
SCALE	1:9

USED ON	IQ3000VS
UNLESS OTHERWISE SPECIFIED TOLERANCES	
.X	±.060
.XX	±.030
.XXX	±.015
FRACTIONAL	±1/16
ANGULAR	±1/2°
SURFACE FINISH	63

DO NOT SCALE DRAWING  
 DIMENSIONS ARE INCHES

**ICE QUBE, INC.**  
THIS IS A PROPRIETARY DOCUMENT. DO NOT REPRODUCE OR DISCLOSE WITHOUT THE EXPRESS WRITTEN PERMISSION OF ICE QUBE, INC.  
 DESCRIPTION  
**IQ3000VS SPEC DRAWING, 480V XP2**  
 DRAWING NUMBER  
**IQ351423**  
 REV  
**D**



**\*IMPORTANT\***  
 GASKET MUST BE APPLIED AS SHOWN FOR PROPER OPERATION AND TO MAINTAIN NEMA INTEGRITY.

EVAP. OUTLET ≈ 158 CFM  
 COND. OUTLET ≈ 236 CFM  
 SOUND LEVEL @5FT FROM UNIT @ A HT. OF 3FT = 60 dBA  
 SOUND LEVEL @2FT FROM UNIT @ A HT. OF 5FT = 65 dBA  
 CONDENSER INLET MIN. CLEARANCE 2.27"

ITEM NUMBER N/A	USED ON IQ3000VS	UNLESS OTHERWISE SPECIFIED TOLERANCES X ±.060 XX ±.030 XXX ±.015 FRACTIONAL ±1/4 ANGULAR ±1/2°	<p>ICE QUBE, INC.  <small>THIS IS A PROPRIETARY DOCUMENT. DO NOT REPRODUCE OR DISCLOSE WITHOUT THE EXPRESS WRITTEN PERMISSION OF ICE QUBE, INC.</small></p>
MATERIAL N/A		<p>EST WT: lbs</p> <p>DRAWN BY: RCC DATE: 4/10/2017 SCALE: 1:5</p> <p>DO NOT SCALE DRAWING DIMENSIONS ARE INCHES</p>	
DESCRIPTION IQ3000VS SPEC DRAWING, 480V XP2			DRAWING NUMBER IQ351423
REV D			