

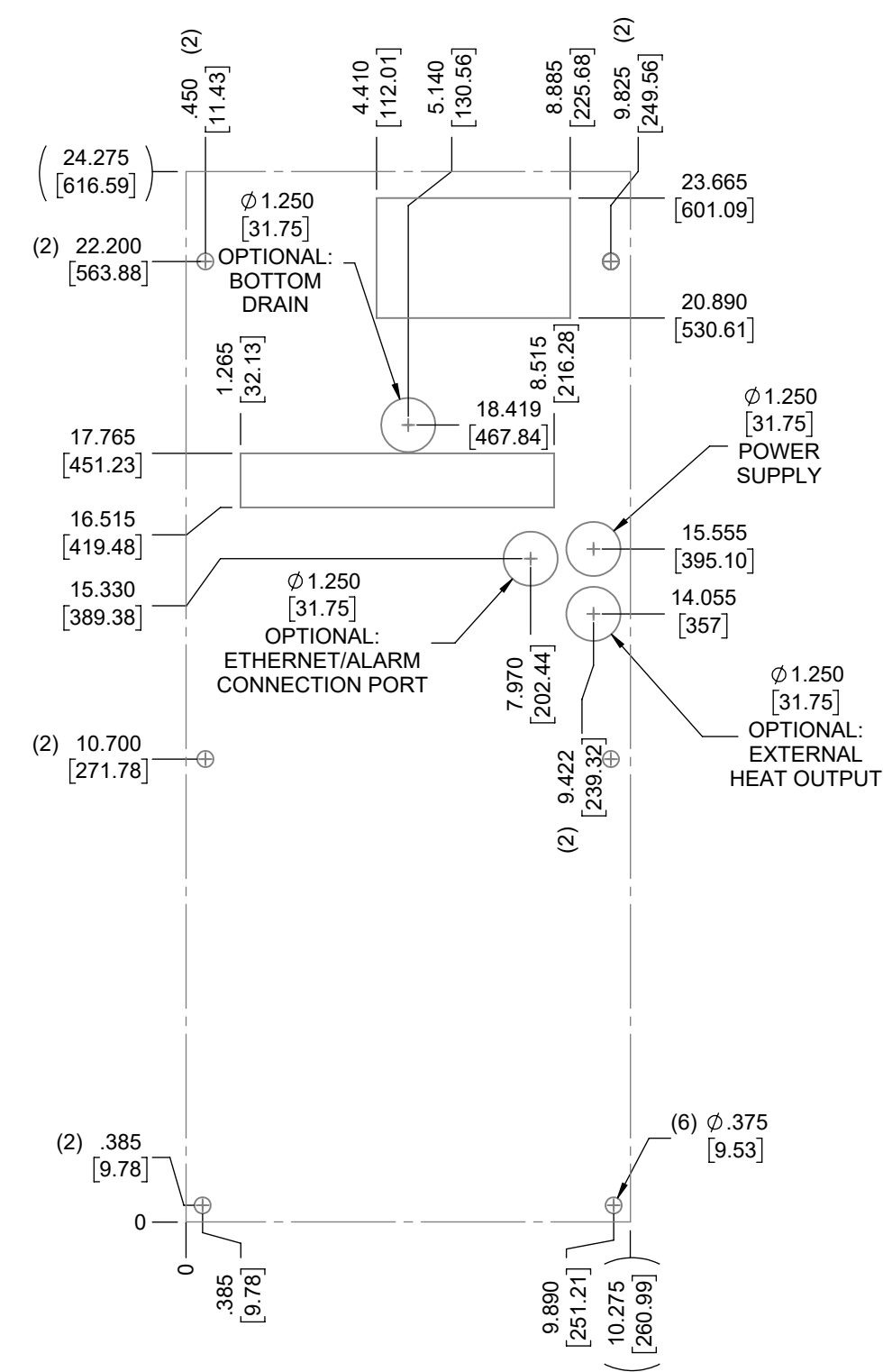
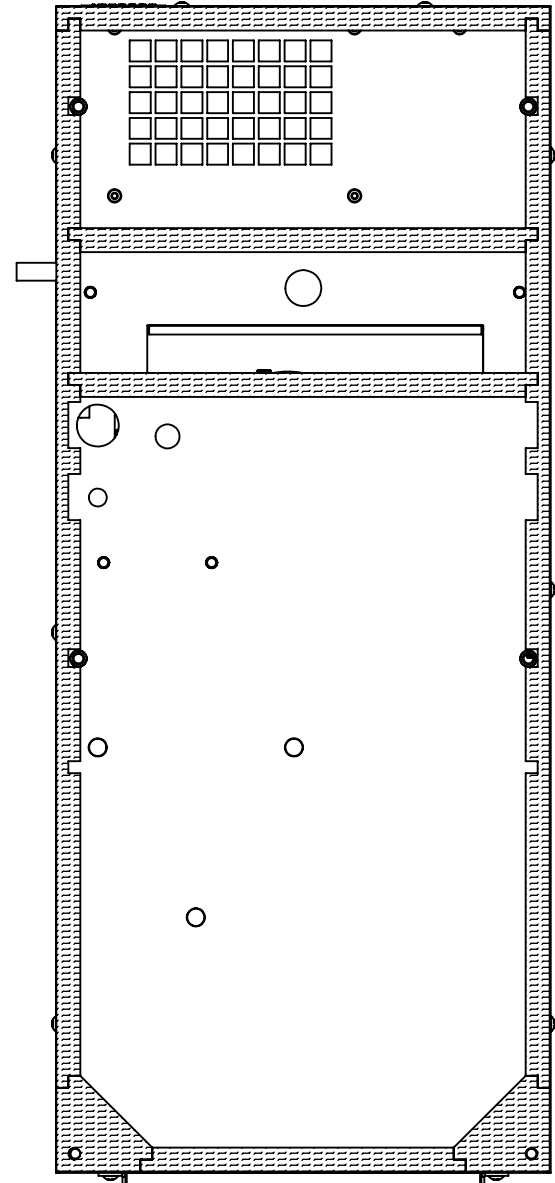
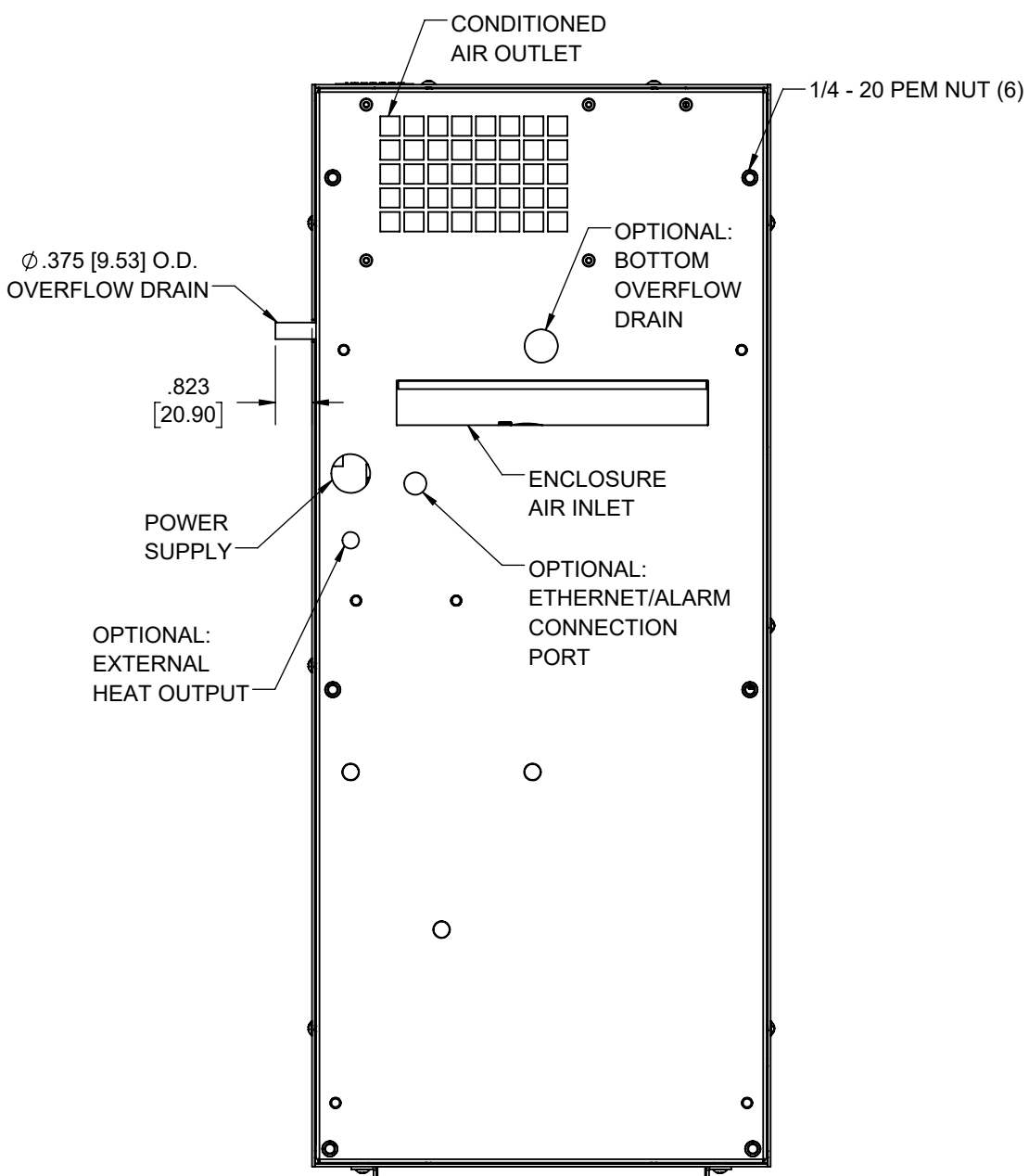
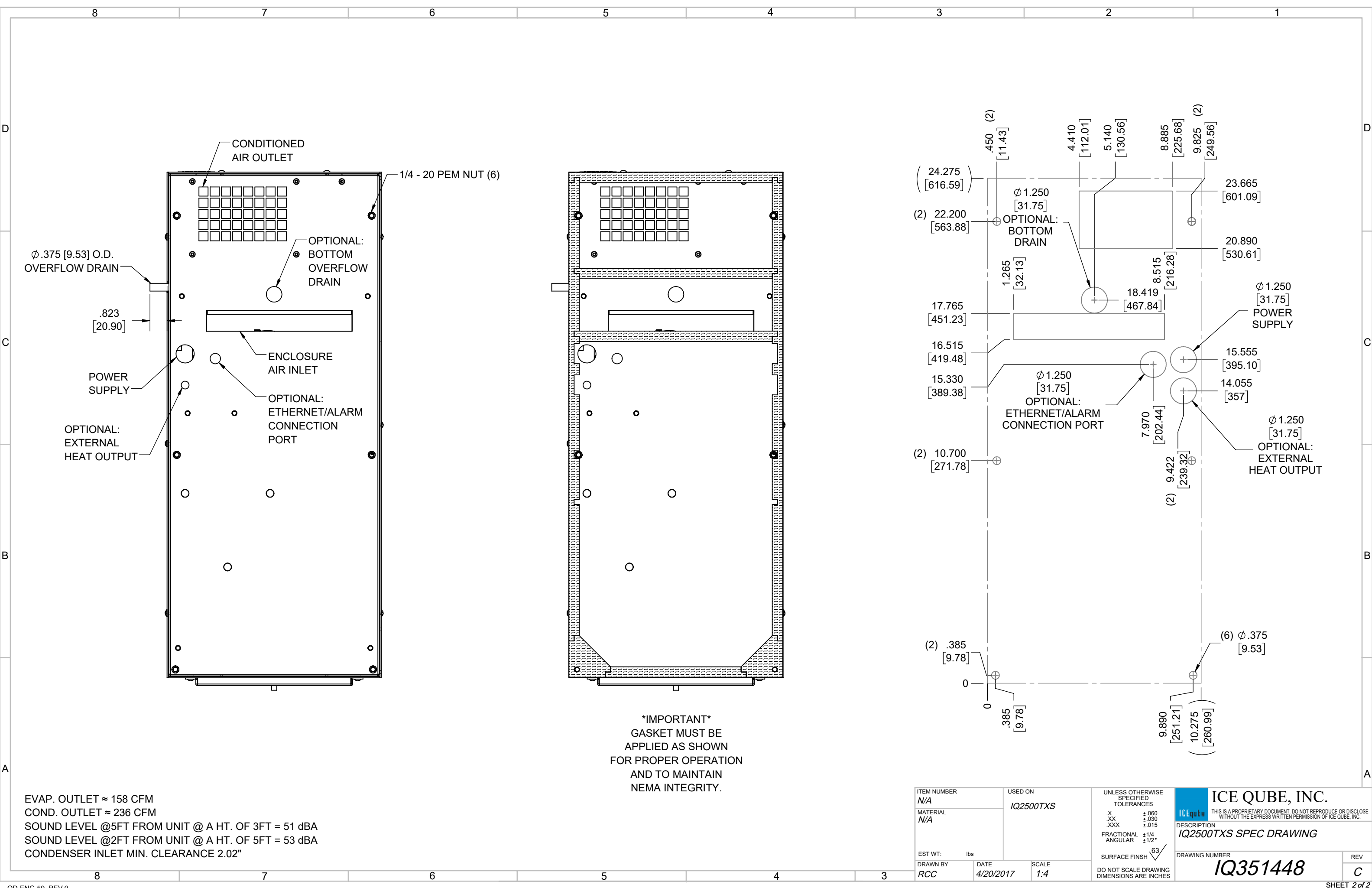
**IQ2500TXS**  
 COOLING CAPACITY: 2500 BTUH (733W) @131 °F (55 °C)  
 MAXIMUM AMPS: 7.6 (912W) @120V/60HZ  
 MAXIMUM AMPS: 3.6 (828W) @230V/60HZ  
 MAXIMUM OPERATING TEMP: 131 °F (55 °C)  
 MINIMUM OPERATING TEMP: -40 °F (-40 °C)  
 DIMENSIONS: 9.25" (235MM) H X 10.31" (262MM) W X 24.31" (617MM) D  
 WEIGHT: 50 LBS (22.7KG)

REV	REVISION	CHG	DATE	APP	DATE	CN #
C	ADDED CFM, dBA, AND CLEARANCE INFO	RCC	3/28/2018			1351
B	ADDED WATTAGE INFO	RCC	1/2/2018			
A	REDRAWN IN SW	RCC	4/20/2017			

ITEM NUMBER	N/A	USED ON	IQ2500TXS
MATERIAL	N/A		
EST WT:	lbs		
DRAWN BY	RCC	DATE	4/20/2017
		SCALE	1:6

UNLESS OTHERWISE SPECIFIED TOLERANCES  
 .X ±.060  
 .XX ±.030  
 .XXX ±.015  
 FRACTIONAL ±1/16  
 ANGULAR ±1/2°  
 SURFACE FINISH 63  
 DO NOT SCALE DRAWING DIMENSIONS ARE INCHES

**ICE QUBE, INC.**  
THIS IS A PROPRIETARY DOCUMENT. DO NOT REPRODUCE OR DISCLOSE WITHOUT THE EXPRESS WRITTEN PERMISSION OF ICE QUBE, INC.  
**DESCRIPTION**  
 IQ2500TXS SPEC DRAWING  
**DRAWING NUMBER**  
 IQ351448  
**REV**  
 C



**\*IMPORTANT\***  
 GASKET MUST BE APPLIED AS SHOWN FOR PROPER OPERATION AND TO MAINTAIN NEMA INTEGRITY.

EVAP. OUTLET ≈ 158 CFM  
 COND. OUTLET ≈ 236 CFM  
 SOUND LEVEL @5FT FROM UNIT @ A HT. OF 3FT = 51 dBA  
 SOUND LEVEL @2FT FROM UNIT @ A HT. OF 5FT = 53 dBA  
 CONDENSER INLET MIN. CLEARANCE 2.02"

ITEM NUMBER N/A	USED ON IQ2500TXS	UNLESS OTHERWISE SPECIFIED TOLERANCES X ±.060 .XX ±.030 .XXX ±.015 FRACTIONAL ±1/4 ANGULAR ±1/2°	<p>THIS IS A PROPRIETARY DOCUMENT. DO NOT REPRODUCE OR DISCLOSE WITHOUT THE EXPRESS WRITTEN PERMISSION OF ICE QUBE, INC.</p> <p>DESCRIPTION IQ2500TXS SPEC DRAWING</p>
MATERIAL N/A		SURFACE FINISH 63	
EST WT: lbs	DATE 4/20/2017	SCALE 1:4	<p>DRAWING NUMBER <b>IQ351448</b></p> <p>REV <b>C</b></p>
DO NOT SCALE DRAWING DIMENSIONS ARE INCHES			