

IQ8000EX

CE 0539 II 2 G Ex db eb ib IIB+H2 T4 Gb

NOMINAL COOLING CAPACITY:

8579 BTUH (2516W) @ 140-140°F (60°C-60°C)

MAXIMUM AMPS: 10.69 (2352W) @ 220V/50Hz

MAXIMUM AMPS: 10.69 (2352W) @ 220V/60Hz

MAXIMUM AMPS: 11.33 (2606W) @ 230V/50Hz

MAXIMUM AMPS: 11.33 (2606W) @ 230V/60Hz

MAXIMUM AMPS: 10.59 (2542W) @ 240V/50Hz

MAXIMUM AMPS: 11.19 (2686W) @ 240V/60Hz

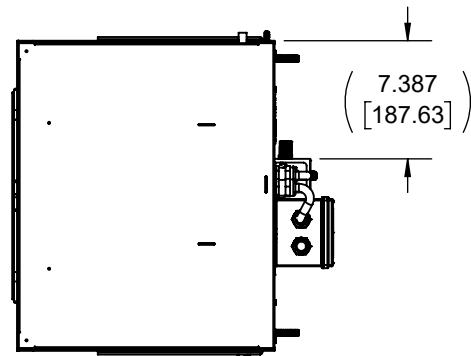
MAXIMUM OPERATING TEMPERATURE: 140°F (60°C)

MINIMUM OPERATING TEMPERATURE: -40°F (-40°C)

DIMENSIONS: 51.090" (1298MM) H x 19.376" (492MM) W x 16.090" (409MM) D

WEIGHT: 250 LBS (114KG)

REFRIGERANT CHARGE: R407C 3LB 12OZ (1701G)



| | | | | | | | |
|-----|--------------------|-----|----------|-----|------|-----|--|
| A | PRODUCTION RELEASE | RCC | 8/2/2018 | | | | |
| REV | REVISION | CHG | DATE | APP | DATE | CN# | |

| | | | |
|-------------|-----|---------|----------|
| ITEM NUMBER | N/A | USED ON | IQ8000EX |
| MATERIAL | N/A | | |
| EST WT: | lbs | | |
| DRAWN BY | JGG | DATE | 8/2/2018 |
| | | SCALE | 1:12 |

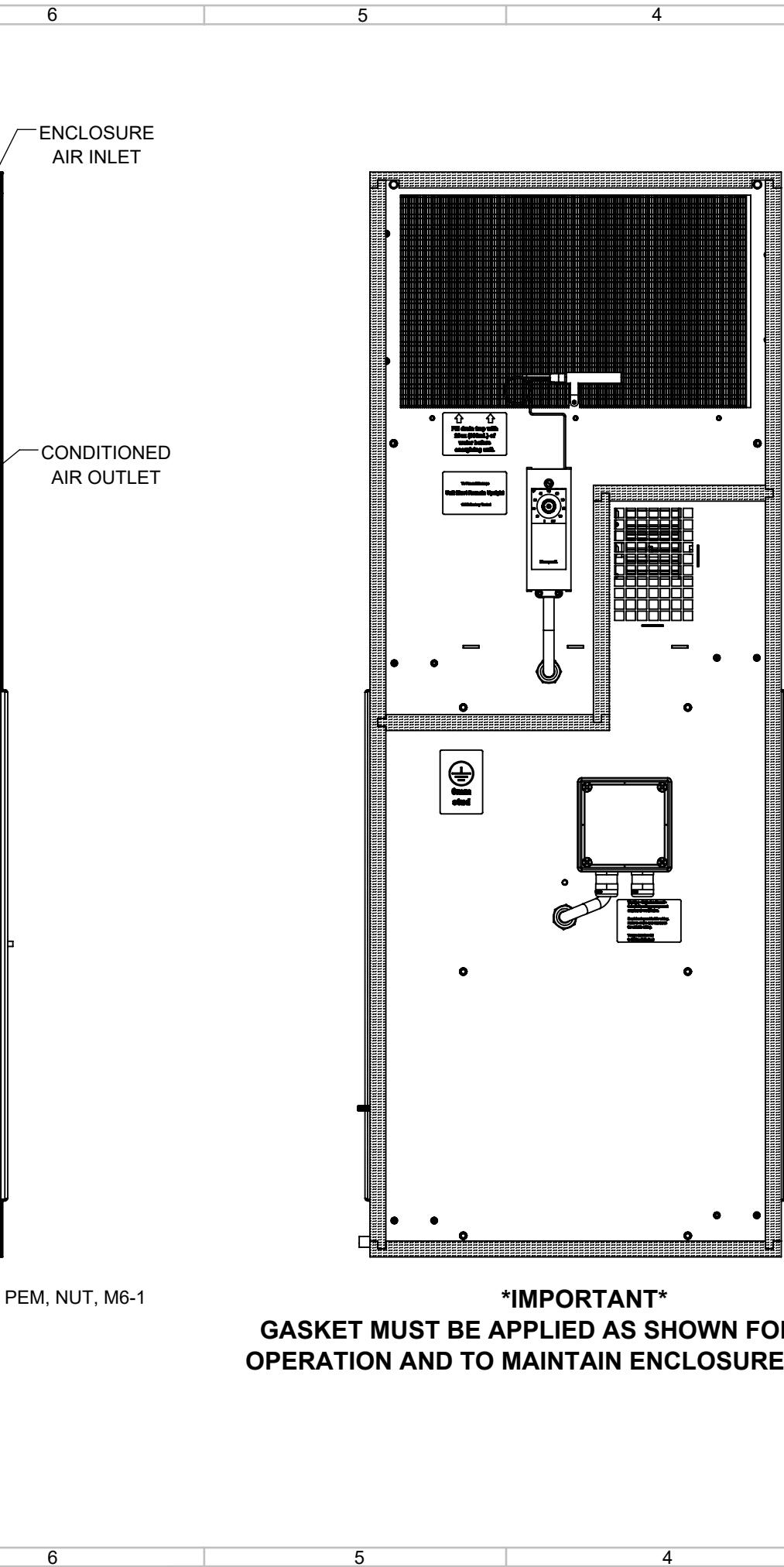
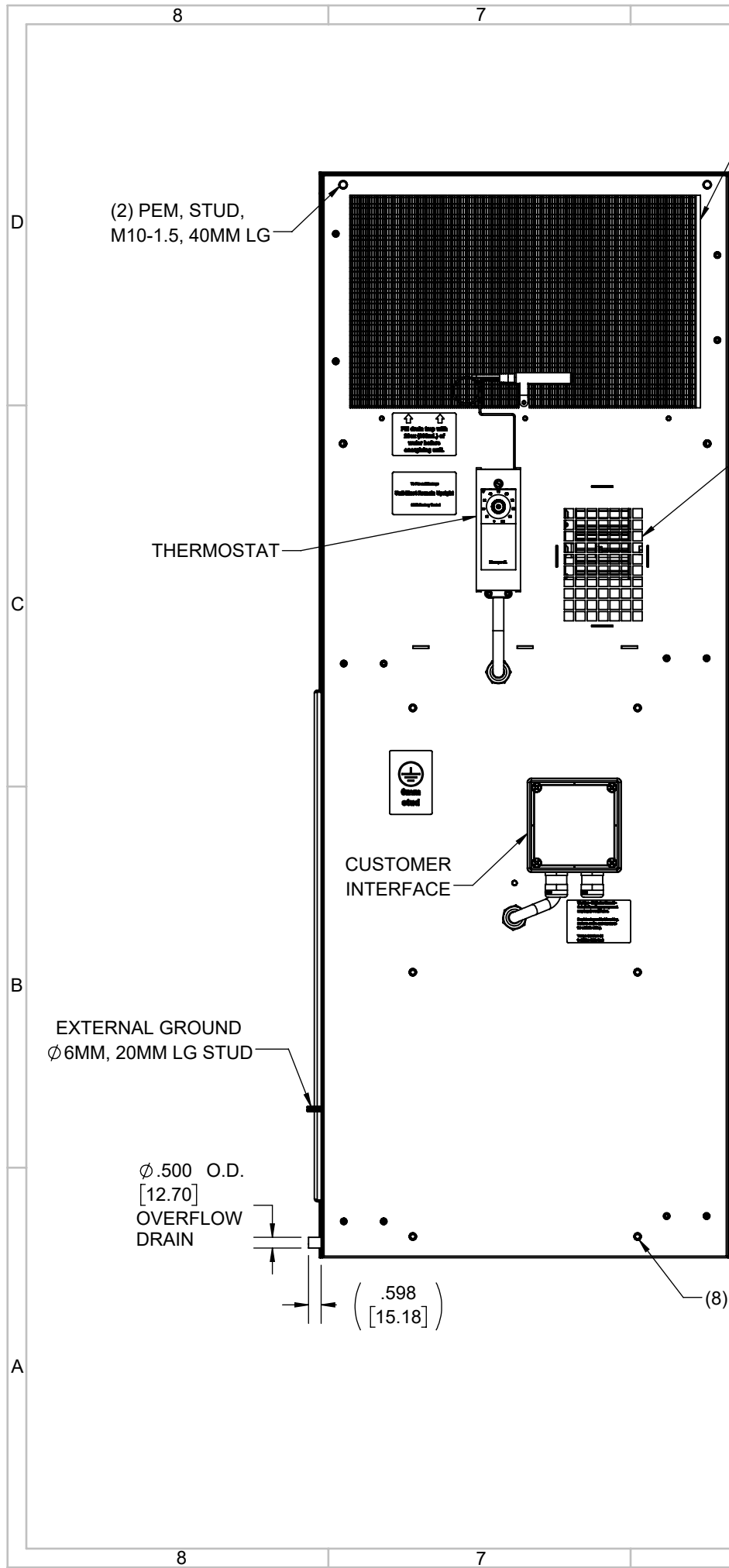
| | |
|--|-------|
| UNLESS OTHERWISE SPECIFIED TOLERANCES | |
| .X | ±.060 |
| .XX | ±.030 |
| .XXX | ±.015 |
| FRACTIONAL | ±1/16 |
| ANGULAR | ±1/2° |
| SURFACE FINISH | 63 |
| DO NOT SCALE DRAWING DIMENSIONS ARE INCHES | |

ICE QUBE, INC.
THIS IS A PROPRIETARY DOCUMENT. DO NOT REPRODUCE OR DISCLOSE WITHOUT THE EXPRESS WRITTEN PERMISSION OF ICE QUBE, INC.

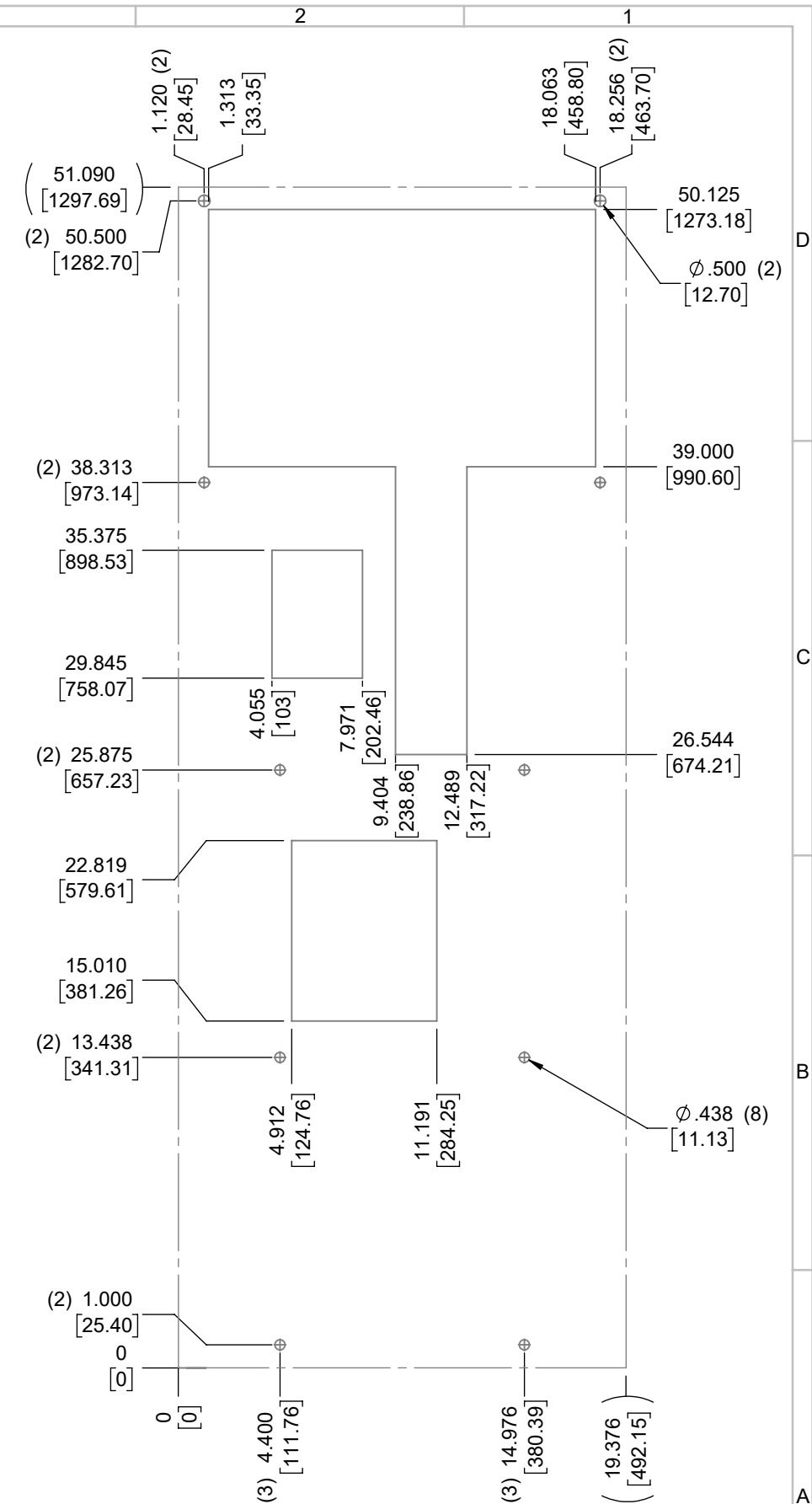
DESCRIPTION
IQ8000EX SPEC DRAWING

DRAWING NUMBER
IQ351991

REV
A



IMPORTANT
GASKET MUST BE APPLIED AS SHOWN FOR PROPER OPERATION AND TO MAINTAIN ENCLOSURE INTEGRITY



| | | | |
|----------------------------|---------------------|--|---|
| ITEM NUMBER N/A | USED ON IQ8000EX | UNLESS OTHERWISE SPECIFIED TOLERANCES X \pm .060 .XX \pm .030 .XXX \pm .015 | <p>ICE QUBE, INC. <small>THIS IS A PROPRIETARY DOCUMENT. DO NOT REPRODUCE OR DISCLOSE WITHOUT THE EXPRESS WRITTEN PERMISSION OF ICE QUBE, INC.</small></p> |
| MATERIAL N/A | | FRACTIONAL \pm 1/4 ANGULAR \pm 1/2° | |
| EST WT: DRAWN BY JGG | DATE 8/2/2018 | SCALE 1:7 | DESCRIPTION IQ8000EX SPEC DRAWING |
| | | | DRAWING NUMBER IQ351991 |
| | | | REV A |