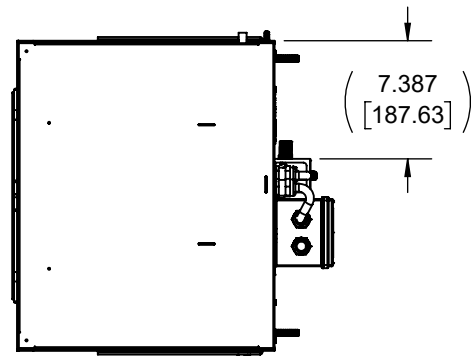


IQ10000EX
 CE 0539 II 2 G Ex db eb ib IIB+H2 T4 Gb
 NOMINAL COOLING CAPACITY:
 10967 BTUH (3216W) @ 140-140°F (60°C-60°C)
 MAXIMUM AMPS: 10.89 (2396W) @ 220V/50Hz
 MAXIMUM AMPS: 10.89 (2396W) @ 220V/60Hz
 MAXIMUM AMPS: 11.64 (2677W) @ 230V/50Hz
 MAXIMUM AMPS: 11.64 (2677W) @ 230V/60Hz
 MAXIMUM AMPS: 10.78 (2587W) @ 240V/50Hz
 MAXIMUM AMPS: 11.48 (2755W) @ 240V/60Hz
 MAXIMUM OPERATING TEMPERATURE: 140°F (60°C)
 MINIMUM OPERATING TEMPERATURE: -40°F (-40°C)
 DIMENSIONS: 51.090" (1298MM) H x 19.376" (492MM) W x 16.090" (409MM) D
 WEIGHT: 250 LBS (114KG)
 REFRIGERANT CHARGE: R407C 4LB (1814G)



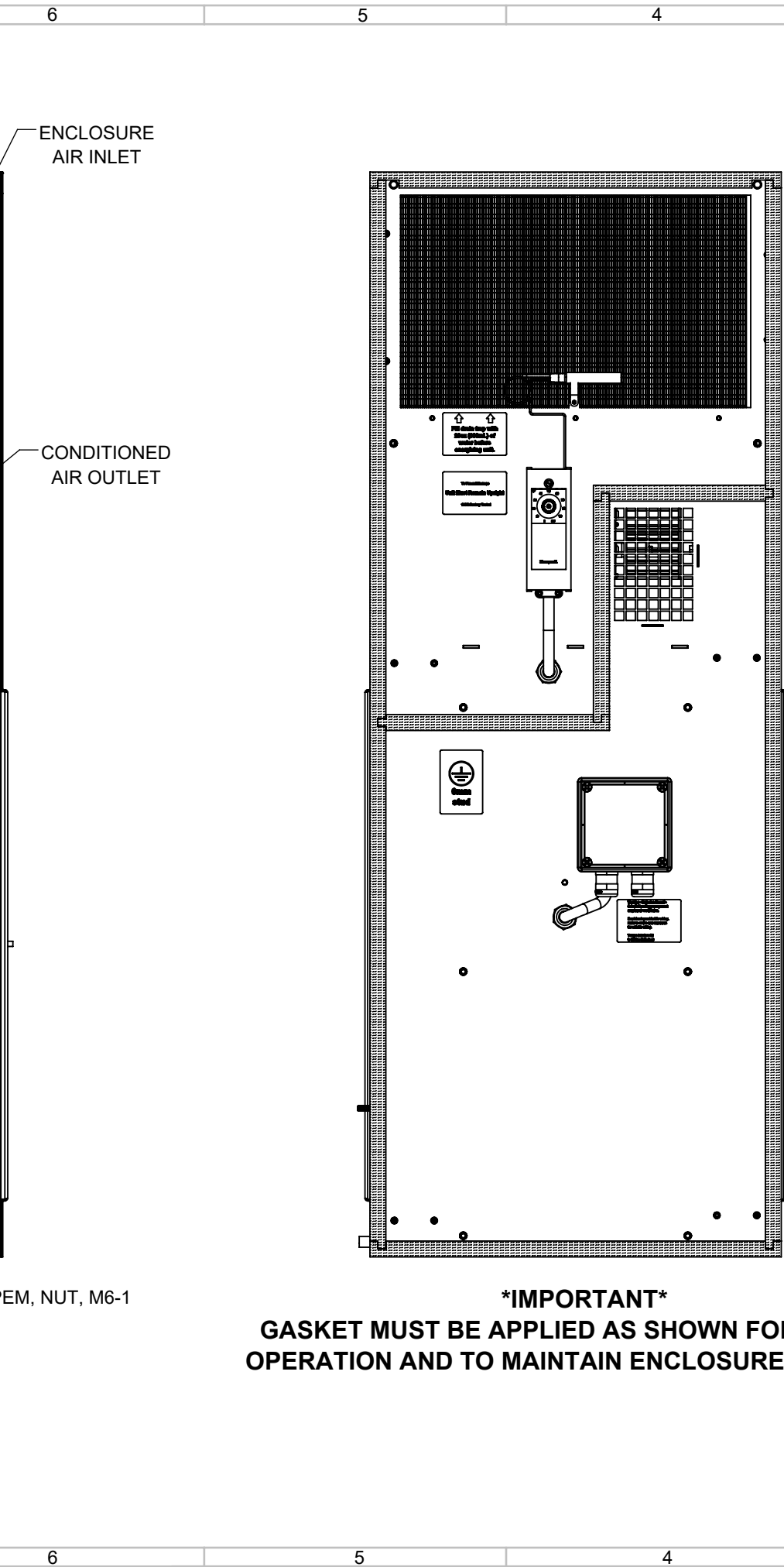
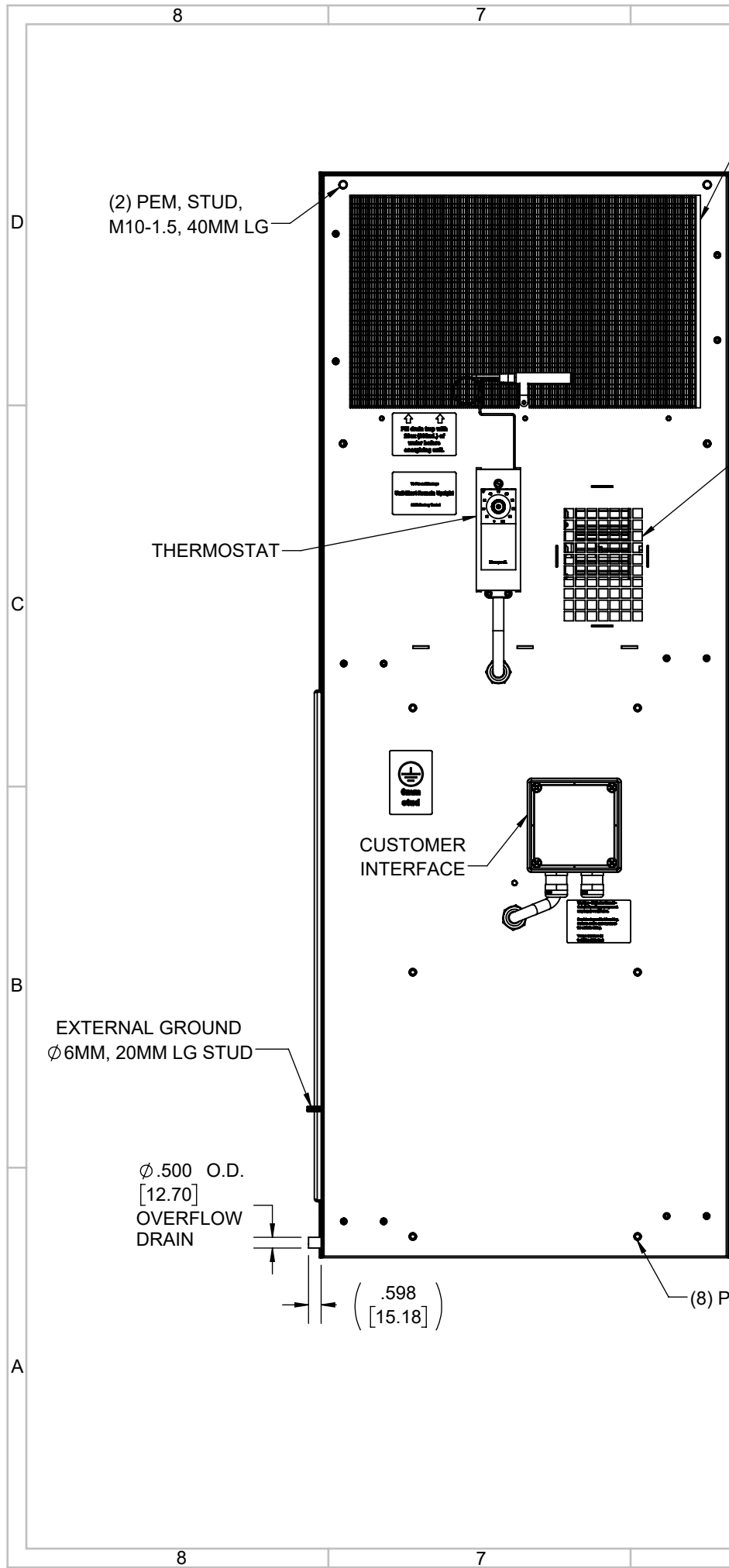
A	PRODUCTION RELEASE	RCC	8/2/2018				
REV	REVISION	CHG	DATE	APP	DATE	CN #	

ITEM NUMBER	N/A
MATERIAL	N/A
EST WT:	lbs
DRAWN BY	JGG

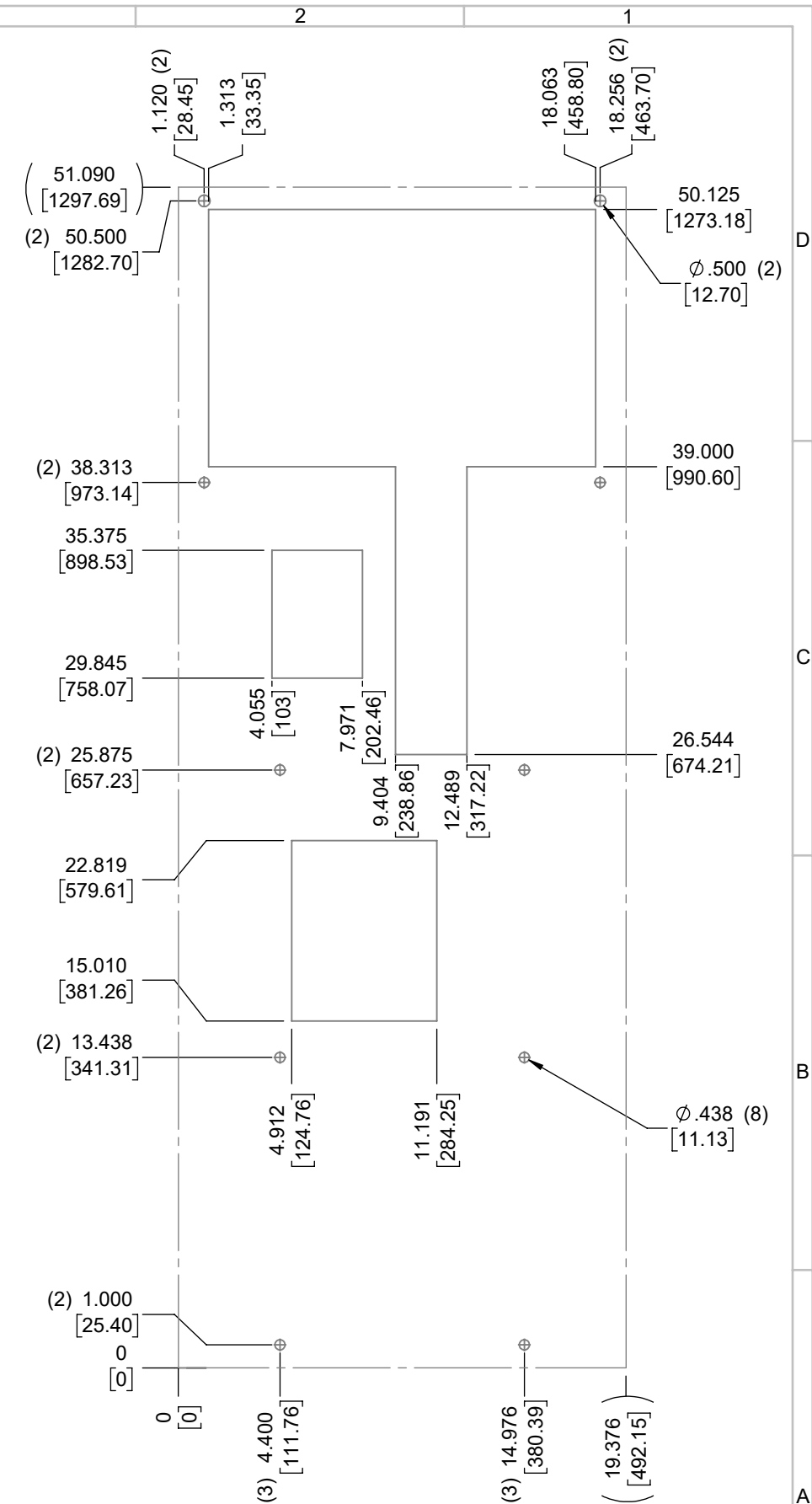
USED ON	IQ10000EX
DATE	8/2/2018
SCALE	1:12

UNLESS OTHERWISE SPECIFIED TOLERANCES
.X ±.060
.XX ±.030
.XXX ±.015
FRACTIONAL ±1/16
ANGULAR ±1/2°
SURFACE FINISH 63
DO NOT SCALE DRAWING DIMENSIONS ARE INCHES

<small>THIS IS A PROPRIETARY DOCUMENT. DO NOT REPRODUCE OR DISCLOSE WITHOUT THE EXPRESS WRITTEN PERMISSION OF ICE QUBE, INC.</small>	
DESCRIPTION	
IQ10000EX SPEC DRAWING	
DRAWING NUMBER	REV
IQ351992	A



IMPORTANT
GASKET MUST BE APPLIED AS SHOWN FOR PROPER OPERATION AND TO MAINTAIN ENCLOSURE INTEGRITY



ITEM NUMBER N/A	USED ON IQ10000EX	UNLESS OTHERWISE SPECIFIED TOLERANCES X \pm .060 .XX \pm .030 .XXX \pm .015	<p>ICE QUBE, INC. <small>THIS IS A PROPRIETARY DOCUMENT. DO NOT REPRODUCE OR DISCLOSE WITHOUT THE EXPRESS WRITTEN PERMISSION OF ICE QUBE, INC.</small></p>
MATERIAL N/A		FRACTIONAL \pm 1/4 ANGULAR \pm 1/2°	
EST WT: DRAWN BY JGG	DATE 8/2/2018	SCALE 1:7	DESCRIPTION IQ10000EX SPEC DRAWING
			DRAWING NUMBER IQ351992
			REV A