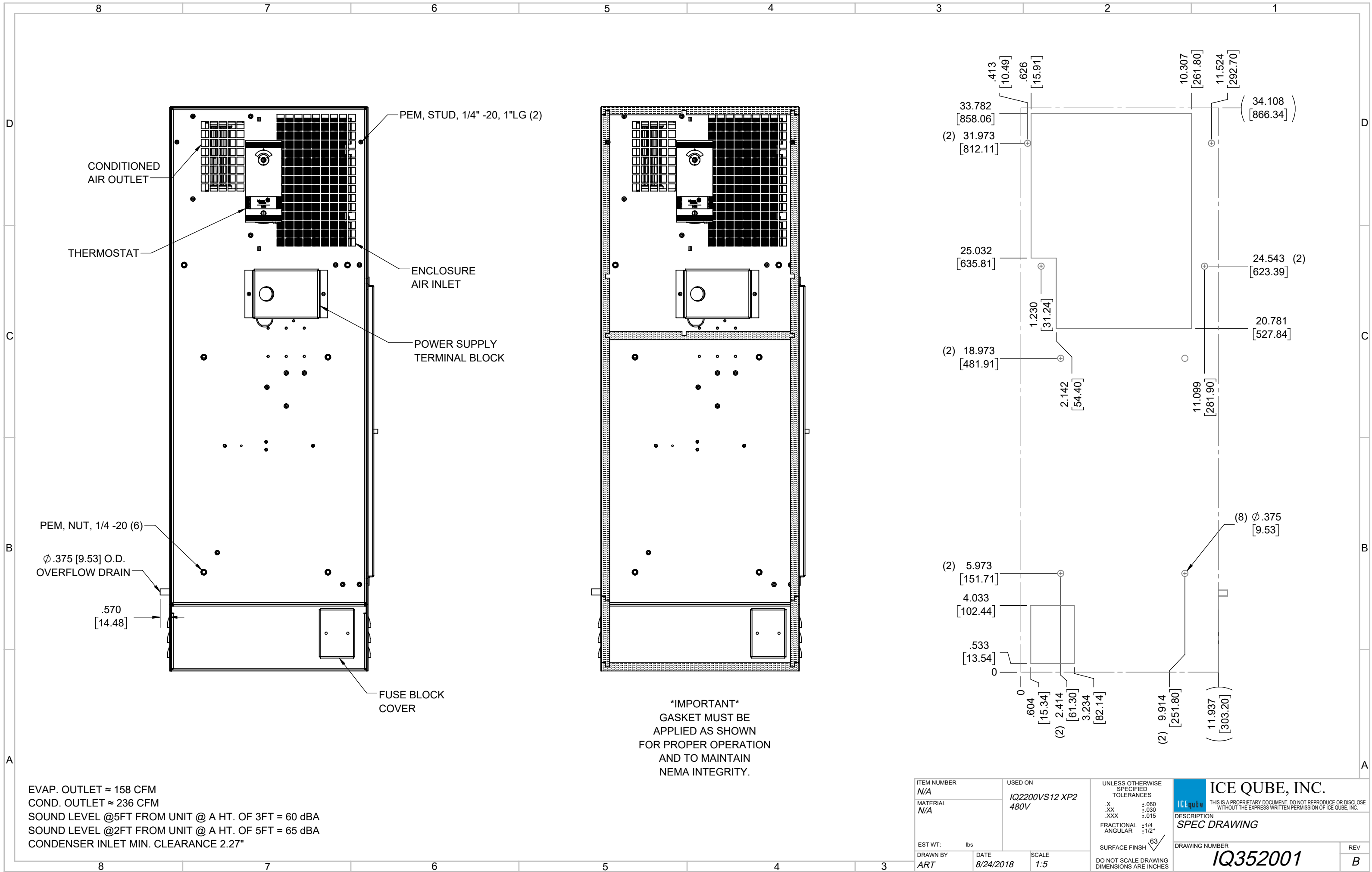


IQ2200VS12
 COOLING CAPACITY: 2200 BTUH (645W) @131°F (55°C)
 MAXIMUM AMPS: 1.6 (768W) @480V/60HZ
 MAXIMUM OPERATING TEMP: 131°F (55°C)
 MINIMUM OPERATING TEMP: -40°F (-40°C)
 DIMENSIONS: 34.12" (867MM) H X 11.99" (305MM) W X 6.34" (161MM) D
 WEIGHT: 90 LBS (40.9KG)

ITEM NUMBER <i>N/A</i>				USED ON <i>IQ2200VS12 XP2 480V</i>				UNLESS OTHERWISE SPECIFIED TOLERANCES .X ±.060 .XX ±.030 .XXX ±.015 FRACTIONAL ±1/16 ANGULAR ±1/2° SURFACE FINISH ⁶³				ICE QUBE, INC. <small>THIS IS A PROPRIETARY DOCUMENT. DO NOT REPRODUCE OR DISCLOSE WITHOUT THE EXPRESS WRITTEN PERMISSION OF ICE QUBE, INC.</small> DESCRIPTION SPEC DRAWING DRAWING NUMBER IQ352001			
MATERIAL <i>N/A</i>				EST WT: lbs <i>63</i>				DO NOT SCALE DRAWING DIMENSIONS ARE INCHES				REV B			
DATE <i>8/24/2018</i>				SCALE <i>1:7</i>				REV B							
DATE <i>2/24/2021</i>				ECN-1434				CHG <i>NAT</i>				DATE <i>9/7/2018</i>			
APP <i>NAT</i>				DATE <i>2/24/2021</i>				APP <i>NAT</i>				DATE <i>9/7/2018</i>			
CN #				CN #				CN #				CN #			
CHANGED THERMOSTAT DIMENSIONS				CHANGED THERMOSTAT DIMENSIONS				CHANGED THERMOSTAT DIMENSIONS				CHANGED THERMOSTAT DIMENSIONS			
INITIAL DRAFT				INITIAL DRAFT				INITIAL DRAFT				INITIAL DRAFT			
REVISION				REVISION				REVISION				REVISION			



EVAP. OUTLET ≈ 158 CFM
 COND. OUTLET ≈ 236 CFM
 SOUND LEVEL @5FT FROM UNIT @ A HT. OF 3FT = 60 dBA
 SOUND LEVEL @2FT FROM UNIT @ A HT. OF 5FT = 65 dBA
 CONDENSER INLET MIN. CLEARANCE 2.27"

ITEM NUMBER N/A	USED ON IQ2200VS12 XP2 480V	UNLESS OTHERWISE SPECIFIED TOLERANCES X ±.060 .XX ±.030 .XXX ±.015 FRACTIONAL ±1/4 ANGULAR ±1/2°	<p>ICE QUBE, INC. <small>THIS IS A PROPRIETARY DOCUMENT. DO NOT REPRODUCE OR DISCLOSE WITHOUT THE EXPRESS WRITTEN PERMISSION OF ICE QUBE, INC.</small></p>
MATERIAL N/A			
EST. WT.: lbs	DATE 8/24/2018	SCALE 1:5	DESCRIPTION SPEC DRAWING
DRAWN BY ART			DRAWING NUMBER IQ352001
			REV B