

IQ4000VS12  
 COOLING CAPACITY: 4000 BTUH (1173W) @131°F (55°C)  
 MAXIMUM AMPS: 8.7 (1044W) @120V/60HZ  
 MAXIMUM AMPS: 4.5/5.0 (1035/1100W) @230/220 60/50HZ  
 MAXIMUM OPERATING TEMP: 131°F (55°C)  
 MINIMUM OPERATING TEMP: -40°F (-40°C)  
 DIMENSIONS: 30.08" (764MM) H X 11.99" (305MM) W X 8.34" (212MM) D  
 WEIGHT: 80 LBS (36.4KG)

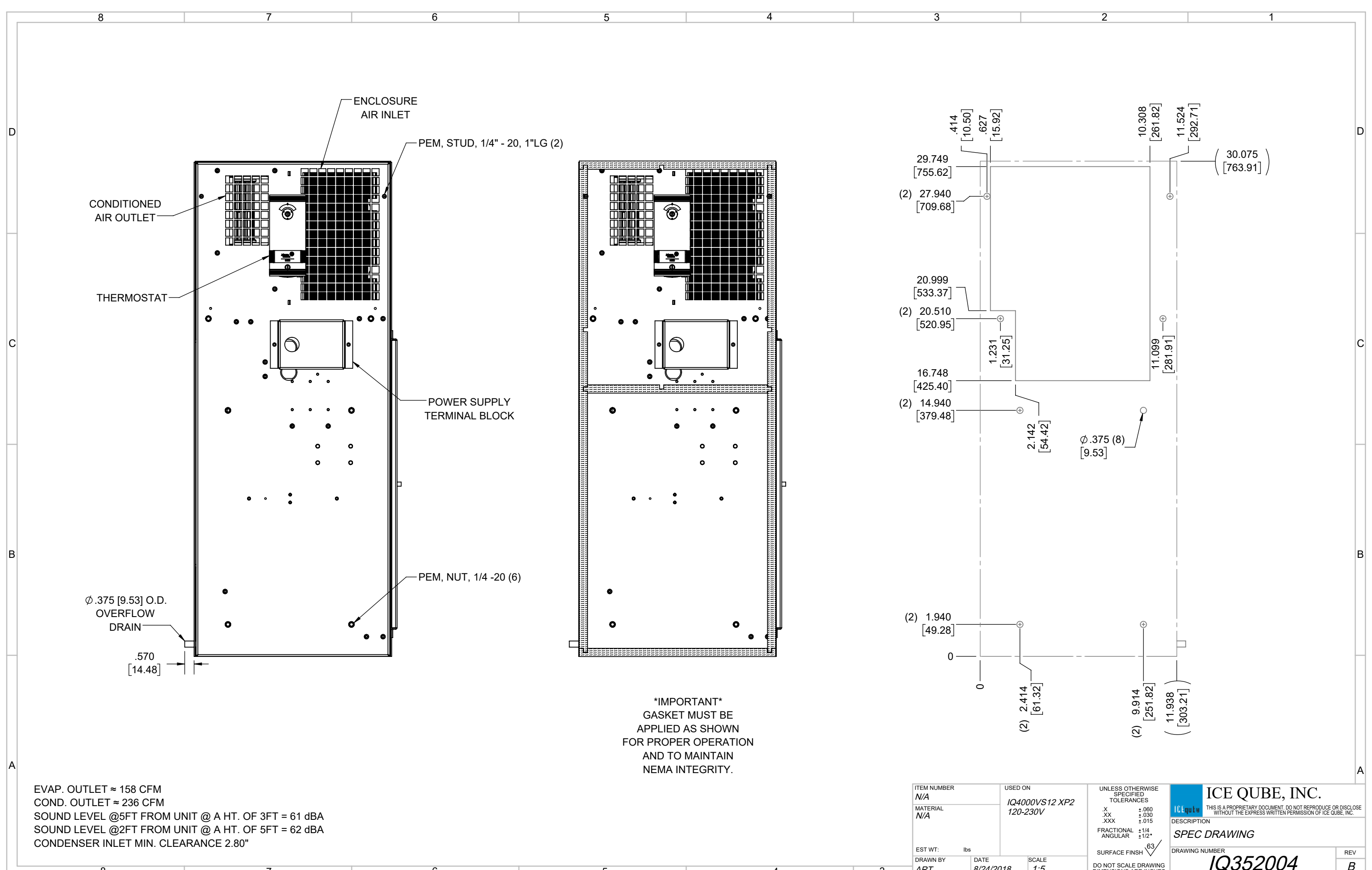
B	CHANGED THERMOSTAT DIMENSIONS	NAT	2/25/2021		ECN-1434
A	INITIAL DRAFT	RCC	9/7/2018		
REV	REVISION	CHG	DATE	APP	DATE

ITEM NUMBER	N/A
MATERIAL	N/A
EST WT:	lbs
DRAWN BY	ART

USED ON	IQ4000VS12 XP2 120-230V
DATE	8/24/2018
SCALE	1:6

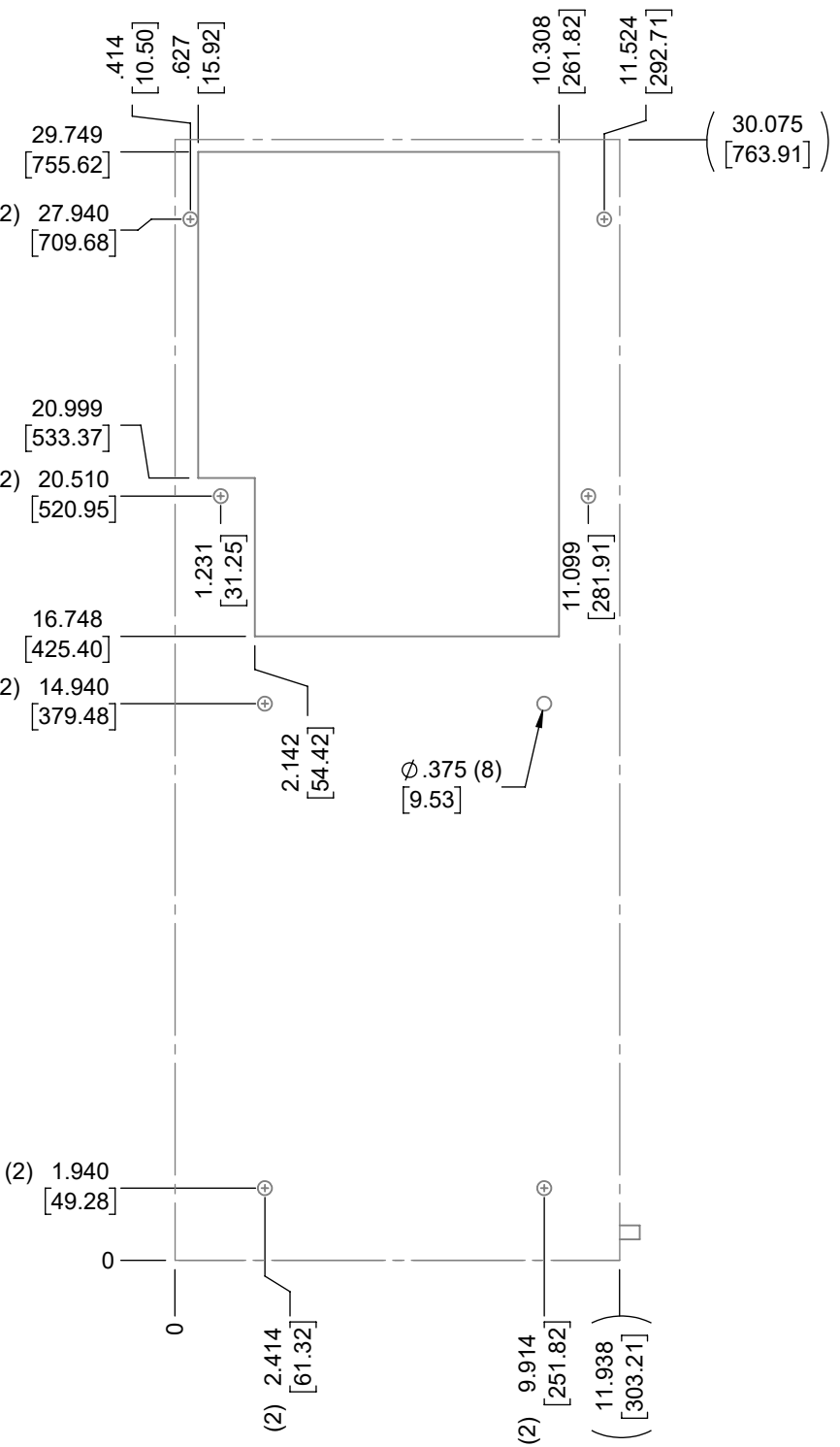
UNLESS OTHERWISE SPECIFIED TOLERANCES	
X	±.060
.XX	±.030
.XXX	±.015
FRACTIONAL	±1/16
ANGULAR	±1/2°
SURFACE FINISH	63
DO NOT SCALE DRAWING DIMENSIONS ARE INCHES	

**ICE QUBE, INC.**  
THIS IS A PROPRIETARY DOCUMENT. DO NOT REPRODUCE OR DISCLOSE WITHOUT THE EXPRESS WRITTEN PERMISSION OF ICE QUBE, INC.  
 DESCRIPTION  
**SPEC DRAWING**  
 DRAWING NUMBER  
**IQ352004**  
 REV  
**B**



EVAP. OUTLET ≈ 158 CFM  
 COND. OUTLET ≈ 236 CFM  
 SOUND LEVEL @5FT FROM UNIT @ A HT. OF 3FT = 61 dBA  
 SOUND LEVEL @2FT FROM UNIT @ A HT. OF 5FT = 62 dBA  
 CONDENSER INLET MIN. CLEARANCE 2.80"

\*IMPORTANT\*  
 GASKET MUST BE  
 APPLIED AS SHOWN  
 FOR PROPER OPERATION  
 AND TO MAINTAIN  
 NEMA INTEGRITY.



ITEM NUMBER N/A	USED ON IQ4000VS12 XP2 120-230V	UNLESS OTHERWISE SPECIFIED TOLERANCES X ±.060 .XX ±.030 .XXX ±.015 FRACTIONAL ±1/4 ANGULAR ±1/2° SURFACE FINISH 63	<b>ICE QUBE, INC.</b> <small>THIS IS A PROPRIETARY DOCUMENT. DO NOT REPRODUCE OR DISCLOSE WITHOUT THE EXPRESS WRITTEN PERMISSION OF ICE QUBE, INC.</small> <b>DESCRIPTION</b> SPEC DRAWING DRAWING NUMBER <b>IQ352004</b>
MATERIAL N/A	EST WT: lbs	DO NOT SCALE DRAWING DIMENSIONS ARE INCHES	
DRAWN BY ART	DATE 8/24/2018	SCALE 1:5	REV B