

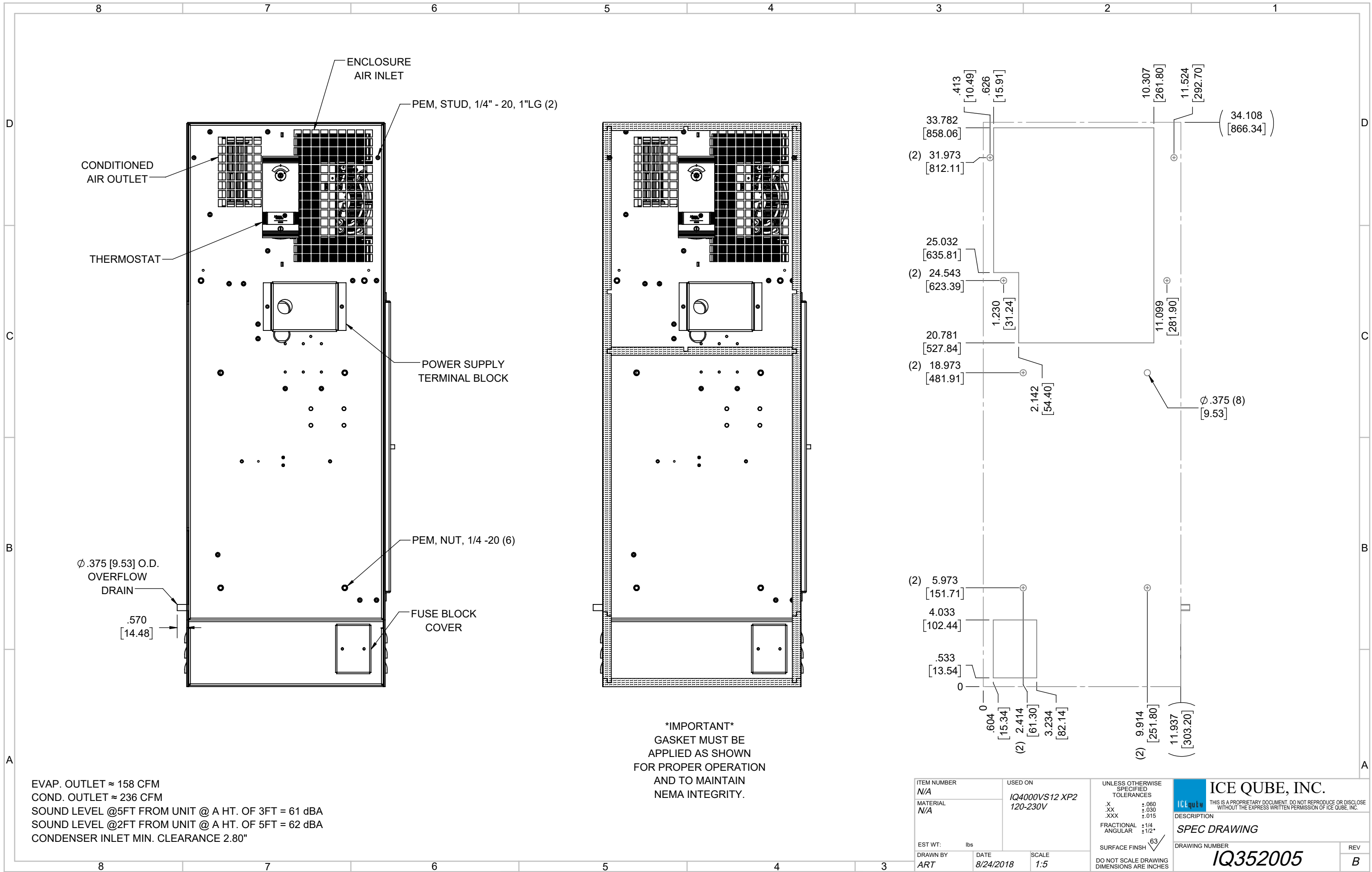
IQ4000VS12
 COOLING CAPACITY: 4000 BTUH (1173W) @131°F (55°C)
 MAXIMUM AMPS: 2.2 (1056W) @480V 60HZ
 MAXIMUM OPERATING TEMP: 131°F (55°C)
 MINIMUM OPERATING TEMP: -40°F (-40°C)
 DIMENSIONS: 34.11" (867MM) H X 11.99" (305MM) W X 8.34" (212MM) D
 WEIGHT: 96 LBS (43.5KG)

ITEM NUMBER N/A		USED ON IQ4000VS12 XP2 120-230V		UNLESS OTHERWISE SPECIFIED TOLERANCES	
MATERIAL N/A				X ±.060 XX ±.030 XXX ±.015	
				FRACTIONAL ±1/16 ANGULAR ±1/2°	
				SURFACE FINISH 63	
EST WT: lbs		DATE 8/24/2018		SCALE 1:7	
DRAWN BY ART		APP		CN #	

EST WT: lbs		DATE 8/24/2018		SCALE 1:7	
DRAWN BY ART		APP		CN #	

THIS IS A PROPRIETARY DOCUMENT. DO NOT REPRODUCE OR DISCLOSE WITHOUT THE EXPRESS WRITTEN PERMISSION OF ICE QUBE, INC.	
DESCRIPTION SPEC DRAWING	
DRAWING NUMBER IQ352005	REV B

B	CHANGED THERMOSTAT DIMENSIONS	NAT	2/25/2021		ECN-1434
A	INITIAL DRAFT	RCC	9/7/2018		
REV	REVISION	CHG	DATE	APP	DATE



IMPORTANT
 GASKET MUST BE
 APPLIED AS SHOWN
 FOR PROPER OPERATION
 AND TO MAINTAIN
 NEMA INTEGRITY.

EVAP. OUTLET ≈ 158 CFM
 COND. OUTLET ≈ 236 CFM
 SOUND LEVEL @5FT FROM UNIT @ A HT. OF 3FT = 61 dBA
 SOUND LEVEL @2FT FROM UNIT @ A HT. OF 5FT = 62 dBA
 CONDENSER INLET MIN. CLEARANCE 2.80"

ITEM NUMBER N/A	USED ON IQ4000VS12 XP2 120-230V	UNLESS OTHERWISE SPECIFIED TOLERANCES X ±.060 .XX ±.030 .XXX ±.015 FRACTIONAL ±1/4 ANGULAR ±1/2° SURFACE FINISH 63	<p>THIS IS A PROPRIETARY DOCUMENT. DO NOT REPRODUCE OR DISCLOSE WITHOUT THE EXPRESS WRITTEN PERMISSION OF ICE QUBE, INC.</p> <p>DESCRIPTION SPEC DRAWING</p> <p>DRAWING NUMBER IQ352005</p> <p>REV B</p>
MATERIAL N/A	EST WT: lbs	DO NOT SCALE DRAWING DIMENSIONS ARE INCHES	
DRAWN BY ART	DATE 8/24/2018	SCALE 1:5	