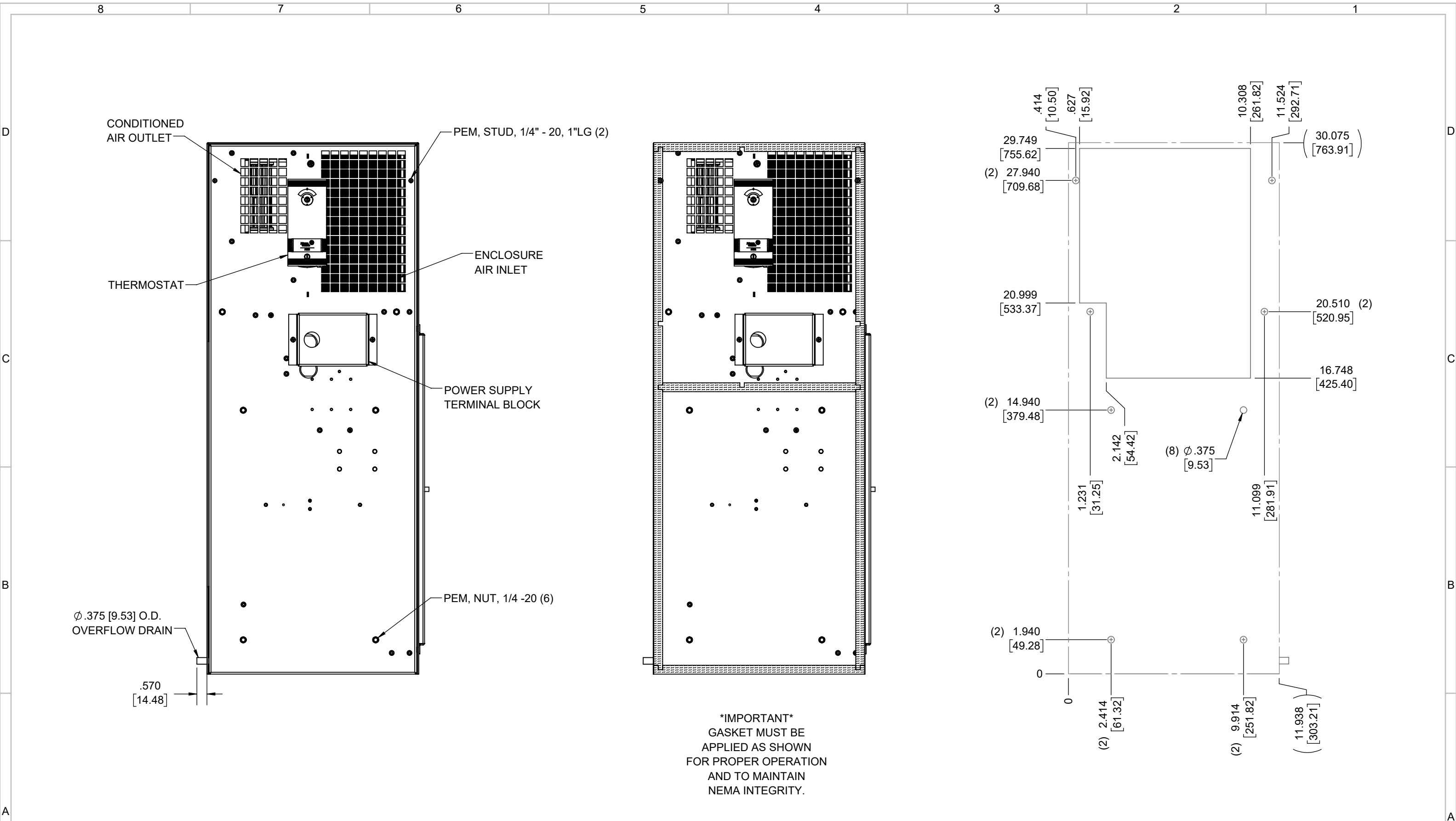


IQ5500VS12
 COOLING CAPACITY: 5500 BTUH (1613W) @131°F (55°C)
 MAXIMUM AMPS: 10.4 (1248W) @120V/60HZ
 MAXIMUM AMPS: 5.2/5.7 (1196/1254W) @230/220V 60/50HZ
 MAXIMUM OPERATING TEMP: 131°F (55°C)
 MINIMUM OPERATING TEMP: -40°F (-40°C)
 DIMENSIONS: 30.09" (764MM) H X 11.99" (305MM) W X 10.39" (264MM) D
 WEIGHT: 95 LBS (43.2KG)

ITEM NUMBER	N/A	USED ON	IQ5500VS12 XP2 120-230V
MATERIAL	N/A		
EST WT:	lbs		
DRAWN BY	ART	DATE	8/24/2018
SCALE	1:7		
REV	CHG	DATE	APP
			DATE
			CN #

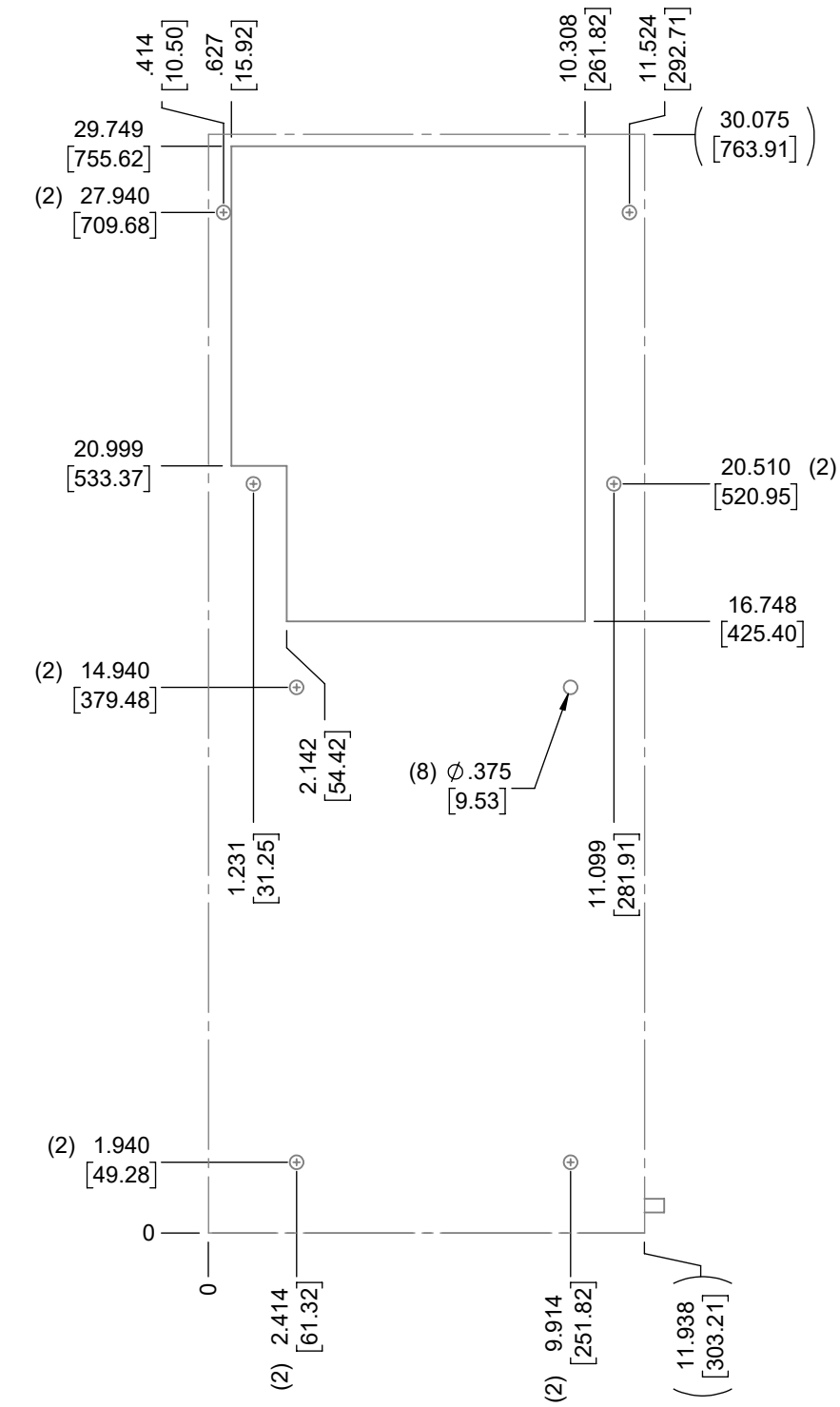
UNLESS OTHERWISE SPECIFIED TOLERANCES	
X	±.060
.XX	±.030
.XXX	±.015
FRACTIONAL	±1/16
ANGULAR	±1/2°
SURFACE FINISH	63
DO NOT SCALE DRAWING DIMENSIONS ARE INCHES	

ICE QUBE, INC.
THIS IS A PROPRIETARY DOCUMENT. DO NOT REPRODUCE OR DISCLOSE WITHOUT THE EXPRESS WRITTEN PERMISSION OF ICE QUBE, INC.
 DESCRIPTION
SPEC DRAWING
 DRAWING NUMBER
IQ352008
 REV
B



IMPORTANT
 GASKET MUST BE
 APPLIED AS SHOWN
 FOR PROPER OPERATION
 AND TO MAINTAIN
 NEMA INTEGRITY.

EVAP. OUTLET ≈ 158 CFM
 COND. OUTLET ≈ 410 CFM
 SOUND LEVEL @5FT FROM UNIT @ A HT. OF 3FT = 64 dBA
 SOUND LEVEL @2FT FROM UNIT @ A HT. OF 5FT = 61 dBA
 CONDENSER INLET MIN. CLEARANCE 3.23"



ITEM NUMBER N/A	USED ON IQ5500VS12 XP2 120-230V	UNLESS OTHERWISE SPECIFIED TOLERANCES X ±.060 .XX ±.030 .XXX ±.015 FRACTIONAL ±1/4 ANGULAR ±1/2°	<p>THIS IS A PROPRIETARY DOCUMENT. DO NOT REPRODUCE OR DISCLOSE WITHOUT THE EXPRESS WRITTEN PERMISSION OF ICE QUBE, INC.</p>
MATERIAL N/A		<p>EST WT: lbs</p> <p>DRAWN BY: ART DATE: 8/24/2018 SCALE: 1:5</p> <p>SURFACE FINISH: 63</p> <p>DO NOT SCALE DRAWING DIMENSIONS ARE INCHES</p>	
<p>DESCRIPTION SPEC DRAWING</p>			<p>DRAWING NUMBER IQ352008</p>
			<p>REV B</p>