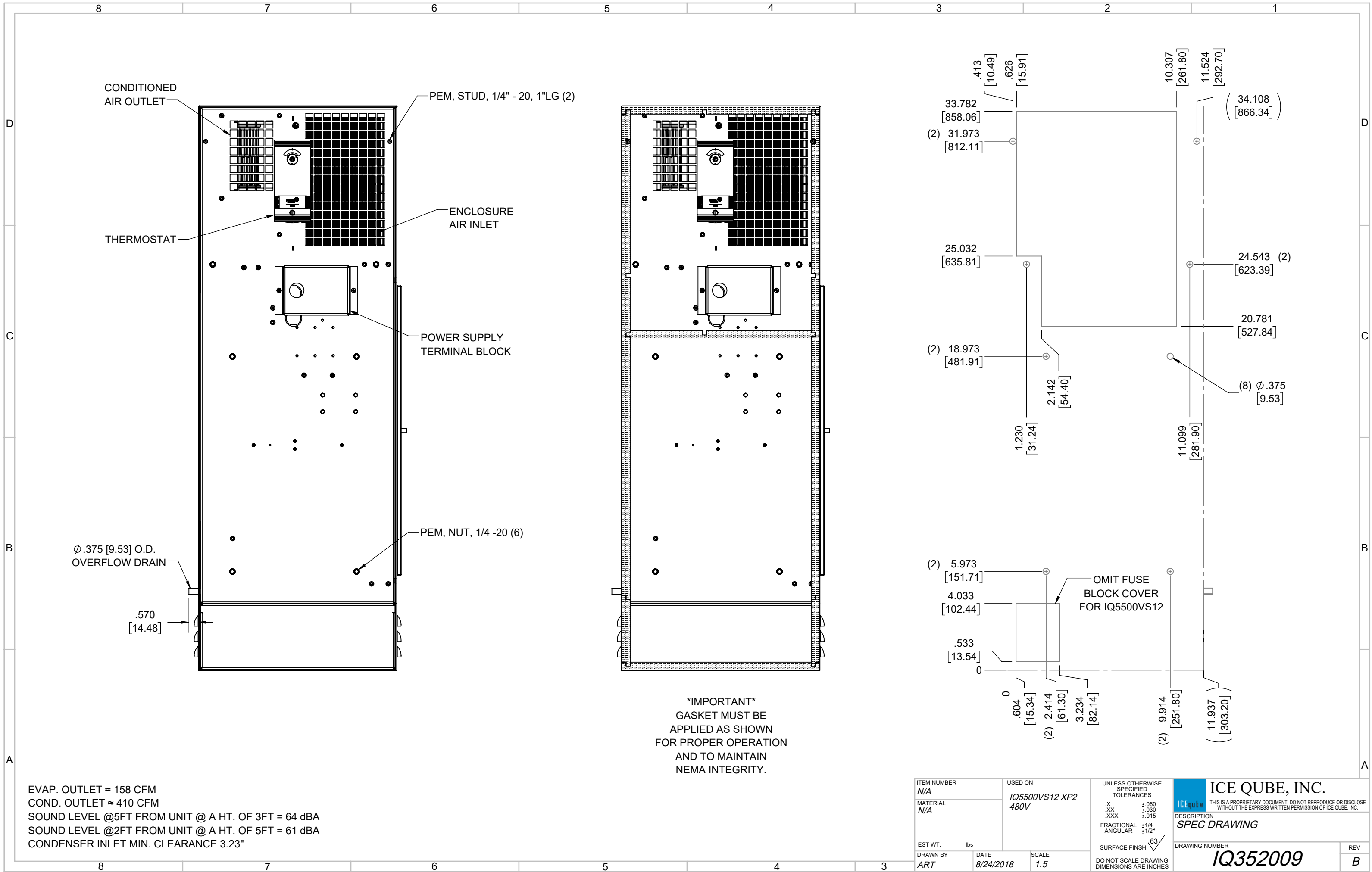


IQ5500VS12  
 COOLING CAPACITY: 5500 BTUH (1613W) @131°F (55°C)  
 MAXIMUM AMPS: 2.1 (1008W) @480V/60HZ  
 MAXIMUM OPERATING TEMP: 131°F (55°C)  
 MINIMUM OPERATING TEMP: -40°F (-40°C)  
 DIMENSIONS: 34.12" (867MM) H X 11.99" (305MM) W X 10.39" (264MM) D  
 WEIGHT: 111 LBS (50.5KG)

ITEM NUMBER	N/A	
MATERIAL	N/A	
USED ON	IQ5500VS12 XP2 480V	
EST WT:	lbs	
DRAWN BY	DATE	SCALE
ART	8/24/2018	1:7
REV	CHG	DATE

UNLESS OTHERWISE SPECIFIED TOLERANCES	
.X	±.060
.XX	±.030
.XXX	±.015
FRACTIONAL	±1/16
ANGULAR	±1/2°
SURFACE FINISH	63
DO NOT SCALE DRAWING DIMENSIONS ARE INCHES	

**ICE QUBE, INC.**  
THIS IS A PROPRIETARY DOCUMENT. DO NOT REPRODUCE OR DISCLOSE WITHOUT THE EXPRESS WRITTEN PERMISSION OF ICE QUBE, INC.  
 DESCRIPTION  
**SPEC DRAWING**  
 DRAWING NUMBER  
**IQ352009**  
 REV  
**B**



EVAP. OUTLET ≈ 158 CFM  
 COND. OUTLET ≈ 410 CFM  
 SOUND LEVEL @5FT FROM UNIT @ A HT. OF 3FT = 64 dBA  
 SOUND LEVEL @2FT FROM UNIT @ A HT. OF 5FT = 61 dBA  
 CONDENSER INLET MIN. CLEARANCE 3.23"

ITEM NUMBER N/A	USED ON IQ5500VS12 XP2 480V	UNLESS OTHERWISE SPECIFIED TOLERANCES X ±.060 .XX ±.030 .XXX ±.015 FRACTIONAL ±1/4 ANGULAR ±1/2°	<p>ICE QUBE, INC.  <small>THIS IS A PROPRIETARY DOCUMENT. DO NOT REPRODUCE OR DISCLOSE WITHOUT THE EXPRESS WRITTEN PERMISSION OF ICE QUBE, INC.</small></p>
MATERIAL N/A			
EST. WT.: lbs	SCALE 1:5	SURFACE FINISH 63	DESCRIPTION SPEC DRAWING
DRAWN BY ART	DATE 8/24/2018	DO NOT SCALE DRAWING DIMENSIONS ARE INCHES	DRAWING NUMBER IQ352009
			REV B