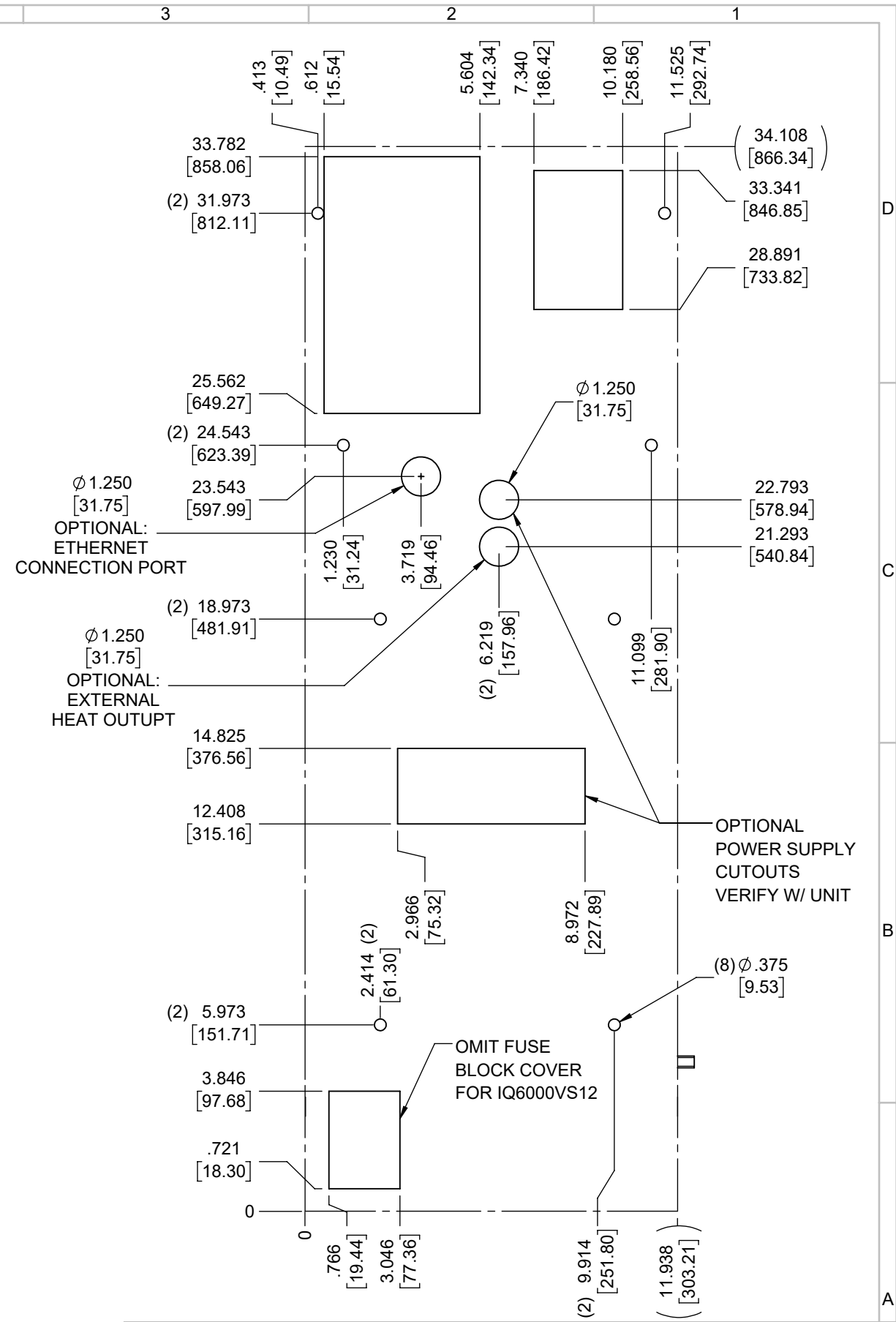
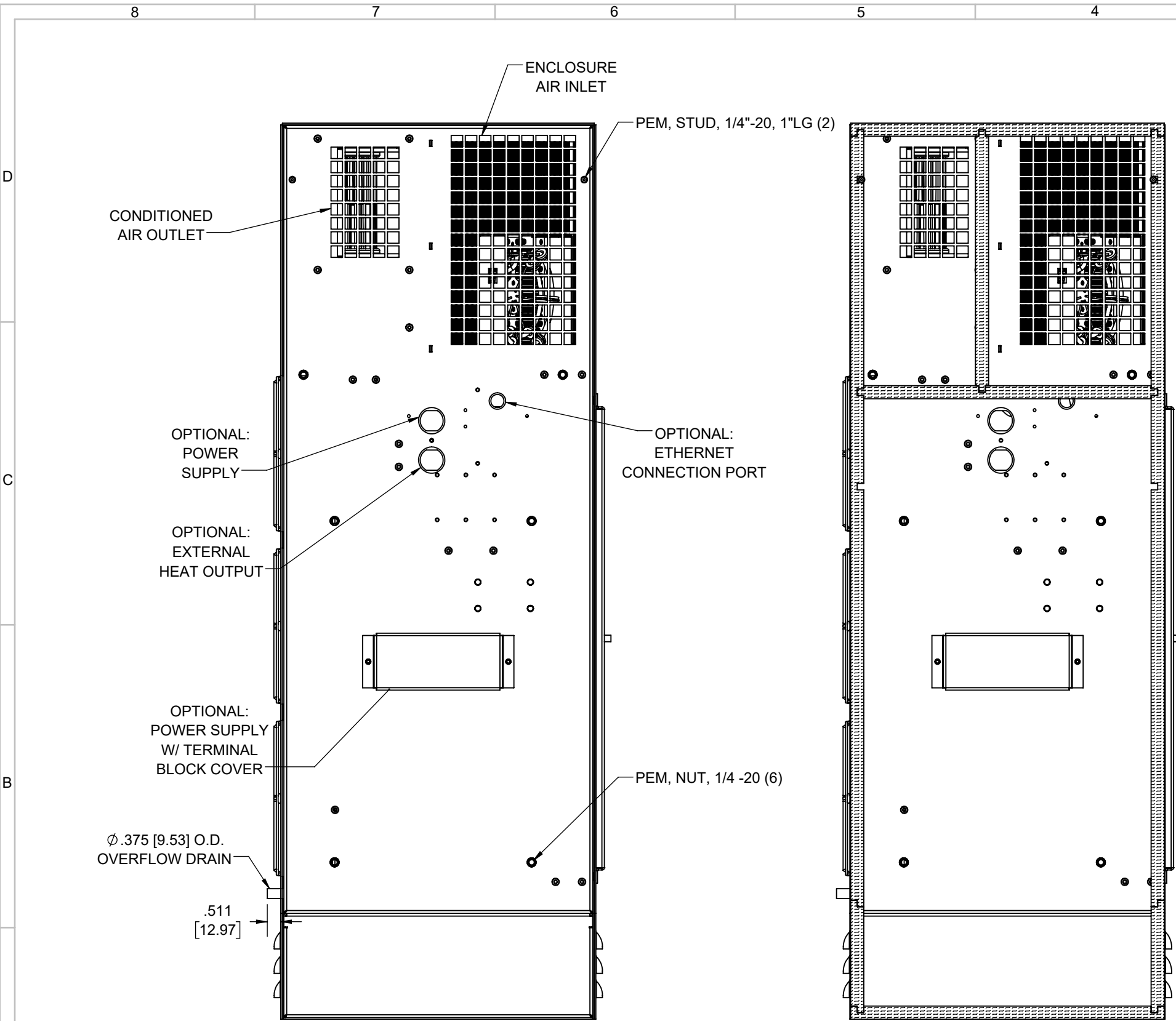


IQ6000VS12
 COOLING CAPACITY: 6000 BTUH (1613W) @131°F (55°C)
 MAXIMUM AMPS: 1.9/2.1 (912/1008W) @480V 60/50HZ
 MAXIMUM OPERATING TEMP: 131°F (55°C)
 MINIMUM OPERATING TEMP: -40°F (-40°C)
 DIMENSIONS: 34.12" (867MM) H X 11.99" (305MM) W X 10.39" (264MM) D
 WEIGHT: 91 LBS (41.4KG)

ITEM NUMBER <i>N/A</i>		USED ON <i>IQ6000VS12</i> <i>480V</i>		UNLESS OTHERWISE SPECIFIED TOLERANCES .X ±.060 .XX ±.030 .XXX ±.015 FRACTIONAL ±1/16 ANGULAR ±1/2° SURFACE FINISH ⁶³		ICE QUBE, INC. <small>THIS IS A PROPRIETARY DOCUMENT. DO NOT REPRODUCE OR DISCLOSE WITHOUT THE EXPRESS WRITTEN PERMISSION OF ICE QUBE, INC.</small> DESCRIPTION SPEC DRAWING DRAWING NUMBER IQ352015	
EST WT: lbs		DRAWN BY <i>ART</i>		DATE <i>8/24/2018</i>		SCALE <i>1:6</i>	
MATERIAL <i>N/A</i>		EST WT: lbs		DATE <i>8/24/2018</i>		SCALE <i>1:6</i>	
REV REVISION		ART CHG		9/7/2018 DATE		CN #	



IMPORTANT
 GASKET MUST BE
 APPLIED AS SHOWN
 FOR PROPER OPERATION
 AND TO MAINTAIN
 NEMA INTEGRITY.

EVAP. OUTLET ≈ 158 CFM
 COND. OUTLET ≈ 410 CFM
 SOUND LEVEL @5FT FROM UNIT @ A HT. OF 3FT = 64 dBA
 SOUND LEVEL @2FT FROM UNIT @ A HT. OF 5FT = 61 dBA
 CONDENSER INLET MIN. CLEARANCE 3.23"

ITEM NUMBER N/A	USED ON IQ6000VS12 480V	UNLESS OTHERWISE SPECIFIED TOLERANCES X ±.060 .XX ±.030 .XXX ±.015 FRACTIONAL ±1/4 ANGULAR ±1/2°	<p>THIS IS A PROPRIETARY DOCUMENT. DO NOT REPRODUCE OR DISCLOSE WITHOUT THE EXPRESS WRITTEN PERMISSION OF ICE QUBE, INC.</p>
MATERIAL N/A	EST WT: lbs	SURFACE FINISH 63	
EST WT: lbs	DRAWN BY ART	DATE 8/24/2018	DESCRIPTION SPEC DRAWING
		SCALE 1:4.5	DRAWING NUMBER IQ352015
		DO NOT SCALE DRAWING DIMENSIONS ARE INCHES	REV A