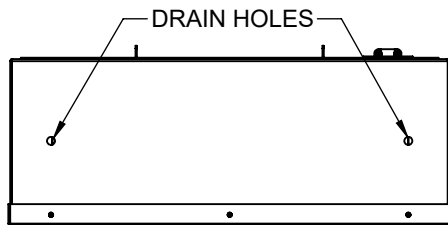
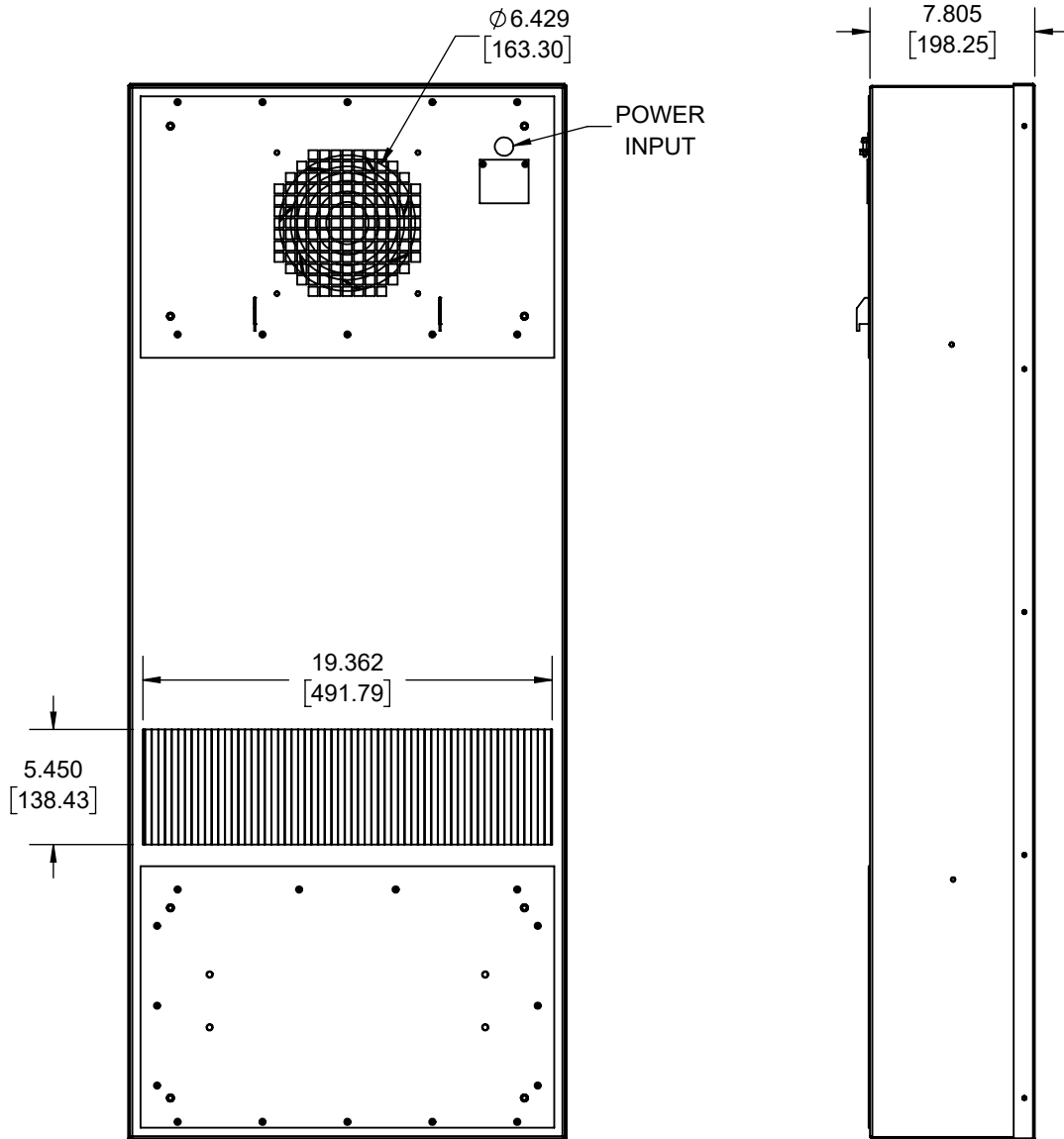
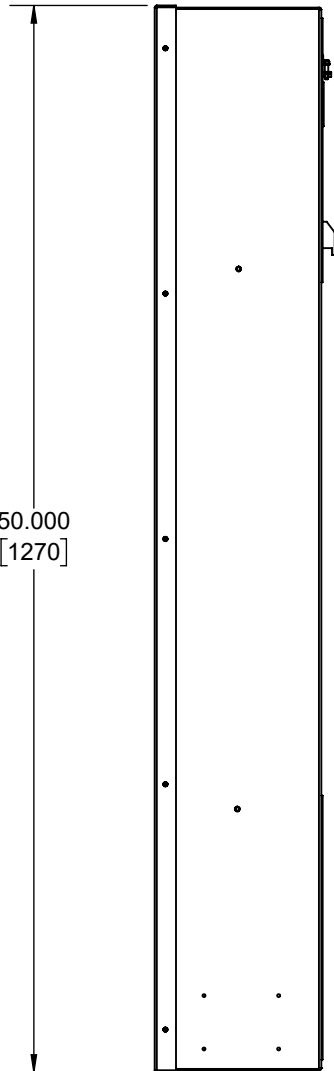
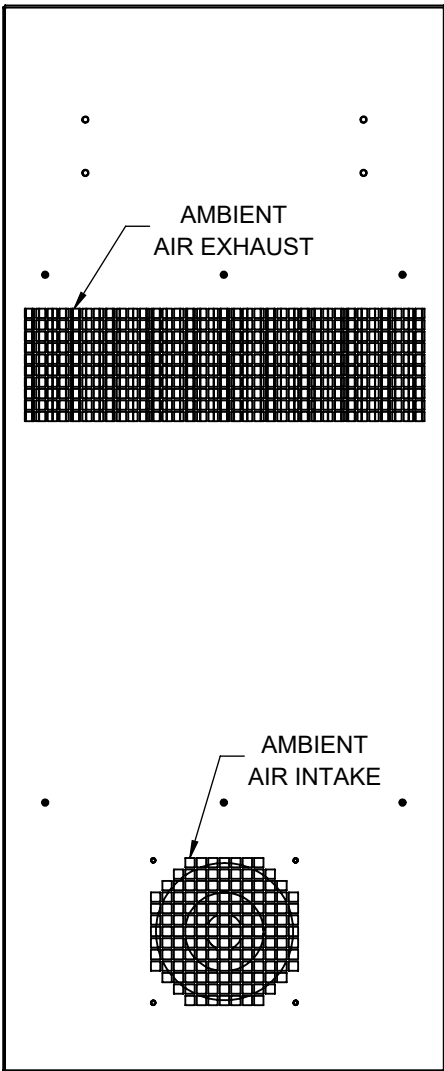
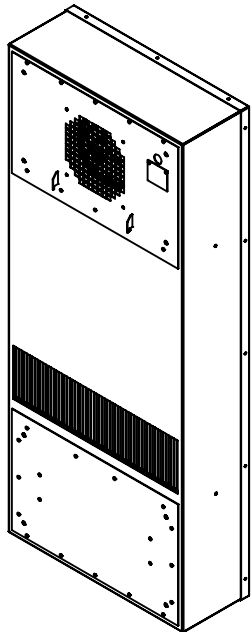
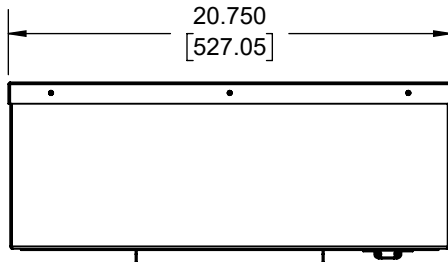
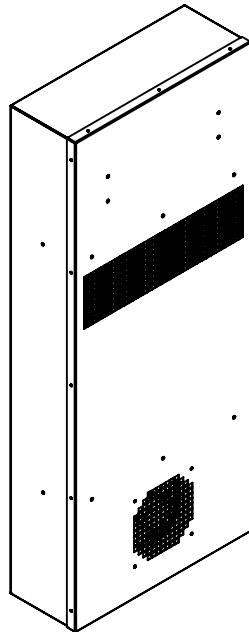


IQ10000HE-XP2

CLASS I, DIVISION 2 CERTIFIED GROUPS A, B, C, AND D



IQ10000HE-XP2
 COOLING CAPACITY: 83 WATTS/°F
 MAXIMUM AMPS: 5.02A (602W) @ 120V/60HZ
 MAXIMUM AMPS: 1.52/1.67A (350/384W) @ 230V 60/50HZ
 MAXIMUM AMPS: 10.82A (260W) @ 24VDC
 MAXIMUM AMPS: 5.42A (260W) @ 48VDC
 MAXIMUM OPERATING TEMP: 176°F (80°C)
 DIMENSIONS: 50.00" (1270MM) H X 20.75" (527MM) W X 7.81" (198MM) D
 WEIGHT: 100 LBS (45.4KG)

REV	CHG	REVISION	DATE	APP	DATE	CN #
C		REVISED CUTOUT	NAT	12/3/2020		
B		INCREASED TEMPERATURE RATING	ART	4/4/2019		
A		INITIAL DRAFT	RCC	11/30/2018		

ITEM NUMBER	N/A
MATERIAL	N/A
EST WT:	lbs
DRAWN BY	RCC

USED ON	IQ10000HE-XP2
DATE	11/30/18
SCALE	1:9

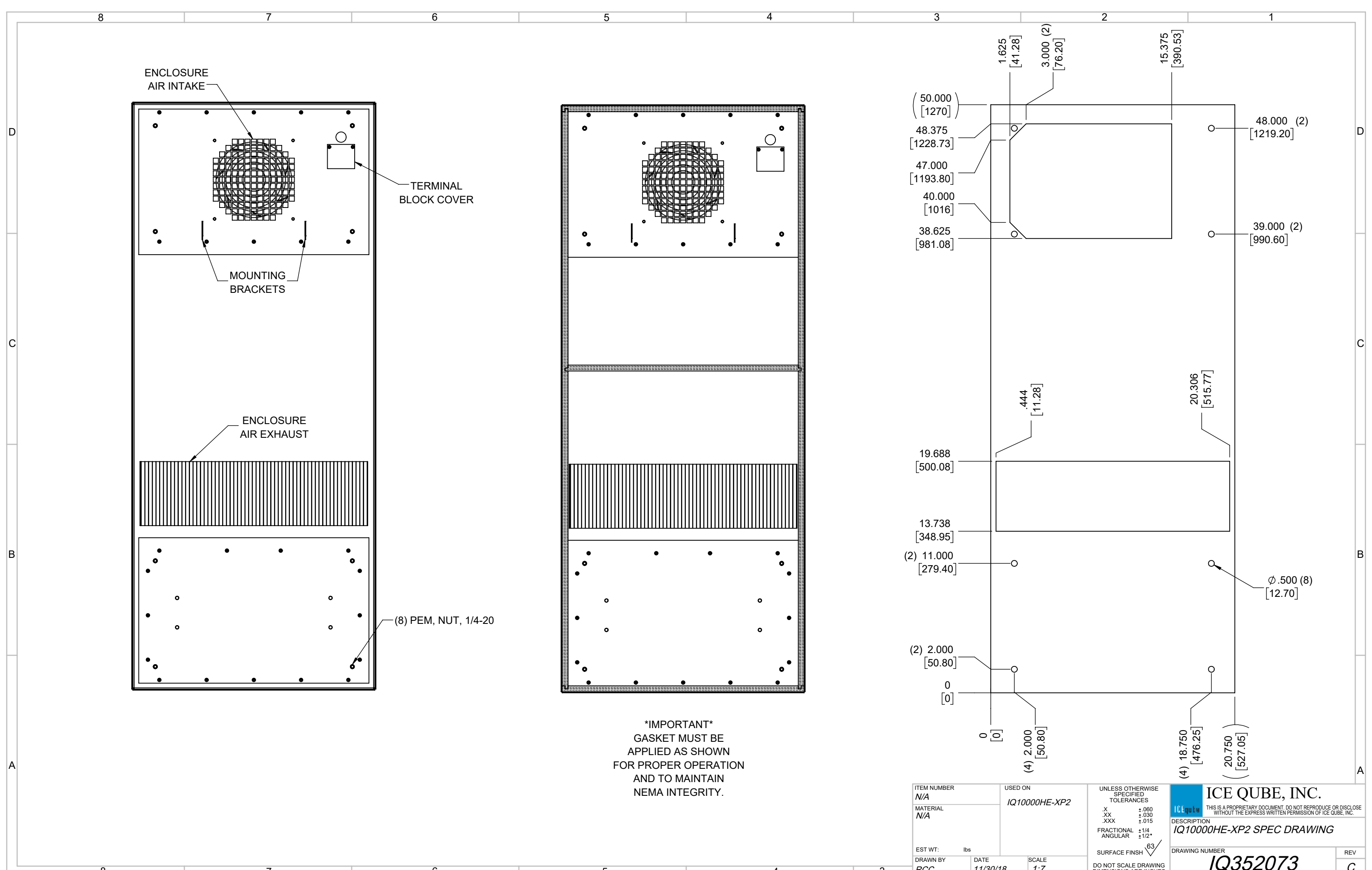
UNLESS OTHERWISE SPECIFIED TOLERANCES	
.X	±.060
.XX	±.030
.XXX	±.015
FRACTIONAL	±1/16
ANGULAR	±1/2°
SURFACE FINISH	63
DO NOT SCALE DRAWING DIMENSIONS ARE INCHES	

ICE QUBE, INC.
 THIS IS A PROPRIETARY DOCUMENT. DO NOT REPRODUCE OR DISCLOSE WITHOUT THE EXPRESS WRITTEN PERMISSION OF ICE QUBE, INC.

DESCRIPTION
IQ10000HE-XP2 SPEC DRAWING

DRAWING NUMBER
IQ352073

REV
C



ENCLOSURE
AIR INTAKE

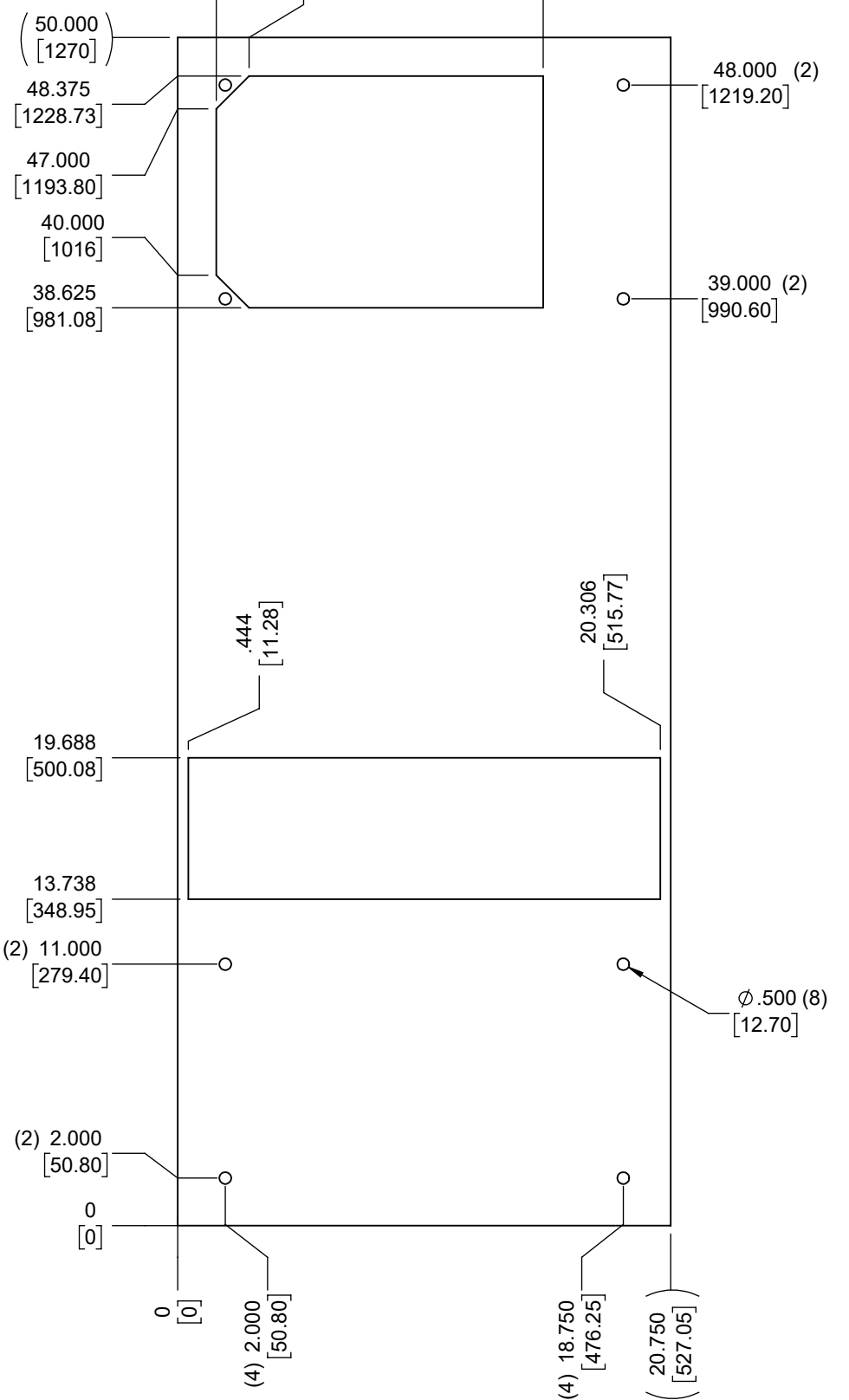
TERMINAL
BLOCK COVER

MOUNTING
BRACKETS

ENCLOSURE
AIR EXHAUST

(8) PEM, NUT, 1/4-20

IMPORTANT
GASKET MUST BE
APPLIED AS SHOWN
FOR PROPER OPERATION
AND TO MAINTAIN
NEMA INTEGRITY.



ITEM NUMBER N/A	USED ON IQ10000HE-XP2	UNLESS OTHERWISE SPECIFIED TOLERANCES X ±.060 .XX ±.030 .XXX ±.015 FRACTIONAL ±1/4 ANGULAR ±1/2°	<p>ICE QUBE, INC. THIS IS A PROPRIETARY DOCUMENT. DO NOT REPRODUCE OR DISCLOSE WITHOUT THE EXPRESS WRITTEN PERMISSION OF ICE QUBE, INC.</p>
MATERIAL N/A		<p>EST WT: lbs</p> <p>DRAWN BY: RCC DATE: 11/30/18 SCALE: 1:7</p> <p>SURFACE FINISH: 63</p> <p>DO NOT SCALE DRAWING DIMENSIONS ARE INCHES</p>	
DESCRIPTION IQ10000HE-XP2 SPEC DRAWING			DRAWING NUMBER IQ352073
			REV C