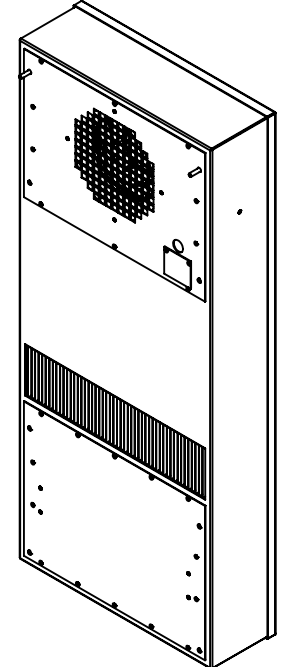
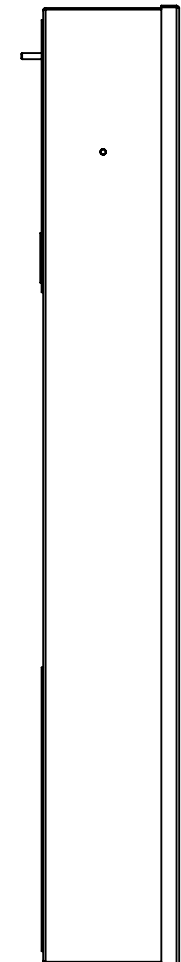
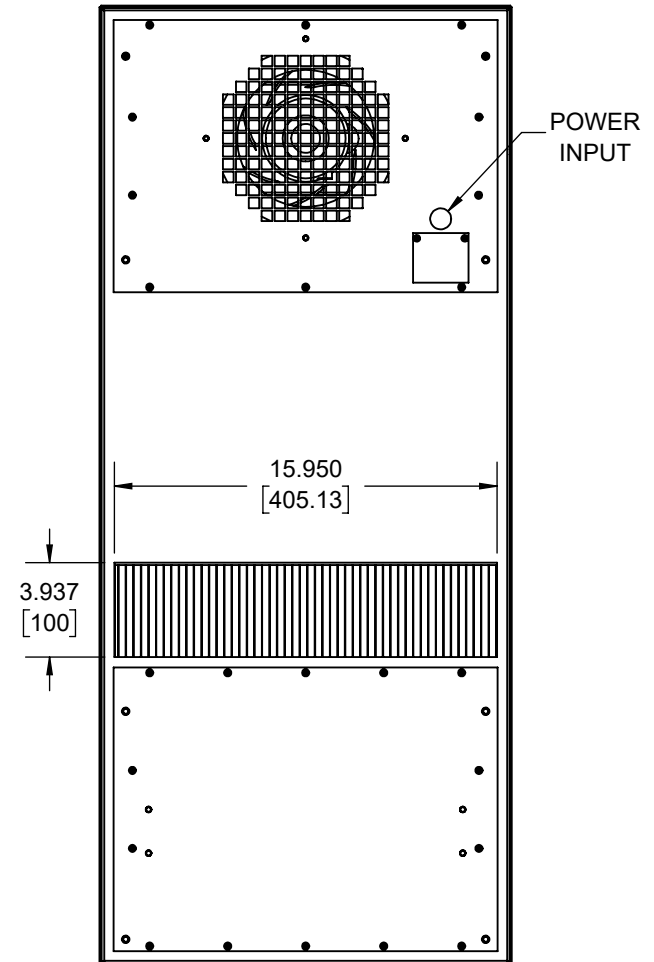
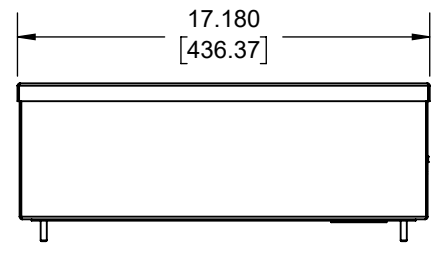
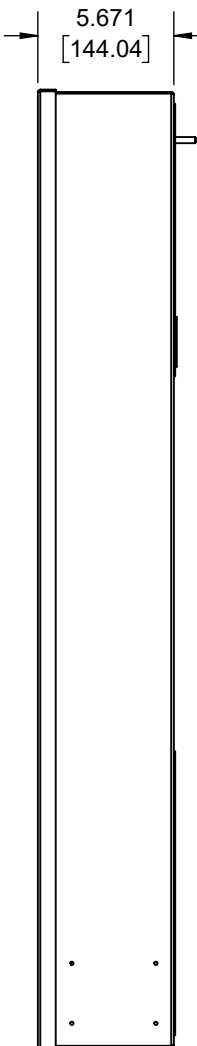
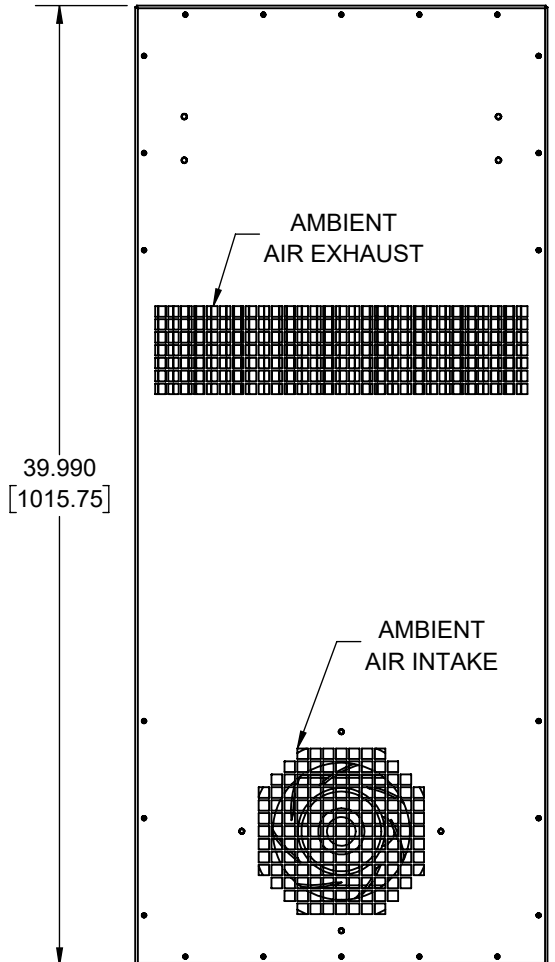
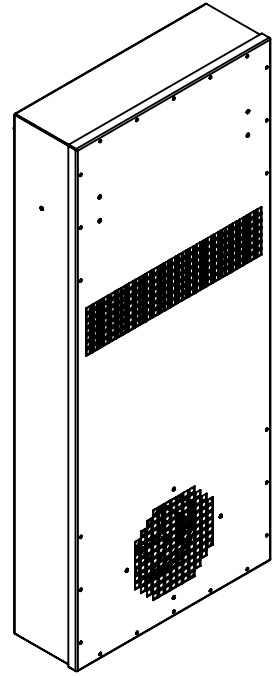


IQ6100HE-Z2 ZONE 2 ATEX IECEx CERTIFIED



IQ6100HE-Z2
 CE 0539 II 3 G Ex nA nC IIC T6 Gc
 COOLING CAPACITY: 47 WATTS/°F
 MAXIMUM AMPS: 3.70A (444W) @ 120V/60HZ
 MAXIMUM AMPS: 1.80/1.40A (414/322W) @ 230V 60/50HZ
 MAXIMUM AMPS: 8.82A (212W) @ 24VDC
 MAXIMUM AMPS: 5.42A (260W) @ 48VDC
 MAINTAINS IP66 BETWEEN EQUIPMENT AND ENCLOSURE
 OPERATING TEMPERATURE: -40° - +60°C (T CODE: T6 @ 24/48VDC & 120/230VAC)
 OPERATING TEMPERATURE: -40° - +65°C (T CODE: T5 @ 24/48VDC)
 DIMENSIONS: 39.99" (1016MM) H X 17.18" (436MM) W X 5.67" (144MM) D
 WEIGHT: 60 LBS (27.2KG)

REV	REVISION	CHG	DATE	APP	DATE	CN #
C	REVISED CUTOUT	NAT	12/4/2020			
B	INCREASED OPERATING TEMPERATURE	ART	4/4/2019			
A	INITIAL DRAFT	RCC	11/30/2018			

ITEM NUMBER N/A	USED ON IQ6100HE-Z2
MATERIAL N/A	
EST WT: lbs	
DRAWN BY RCC	DATE 1/21/2019
	SCALE 1:8

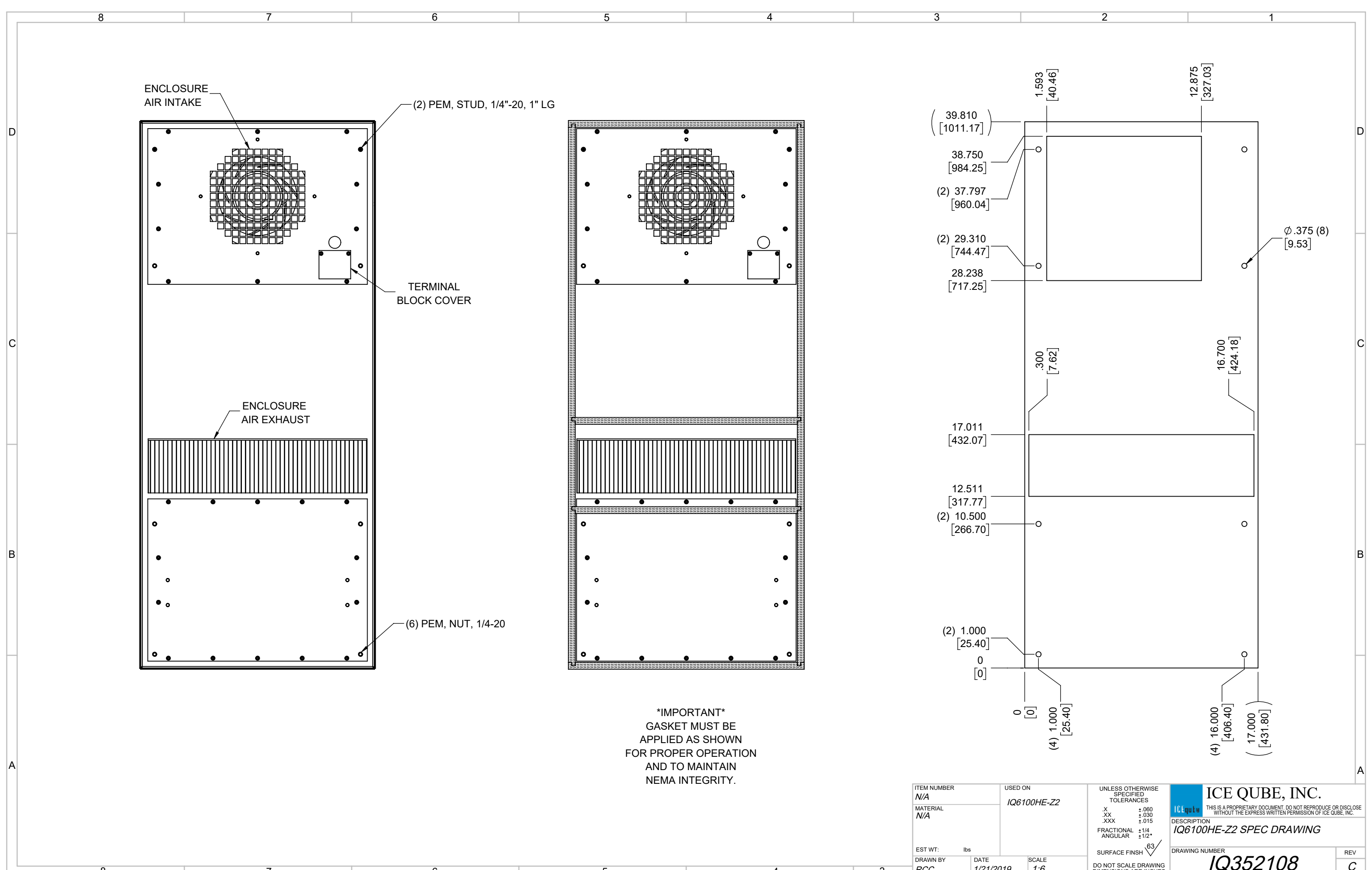
UNLESS OTHERWISE SPECIFIED TOLERANCES	
.X	±.060
.XX	±.030
.XXX	±.015
FRACTIONAL	±1/16
ANGULAR	±1/2°
SURFACE FINISH ⁶³	
DO NOT SCALE DRAWING DIMENSIONS ARE INCHES	

ICE QUBE, INC.
THIS IS A PROPRIETARY DOCUMENT. DO NOT REPRODUCE OR DISCLOSE WITHOUT THE EXPRESS WRITTEN PERMISSION OF ICE QUBE, INC.

DESCRIPTION
IQ6100HE-Z2 SPEC DRAWING

DRAWING NUMBER
IQ352108

REV
C



ENCLOSURE AIR INTAKE

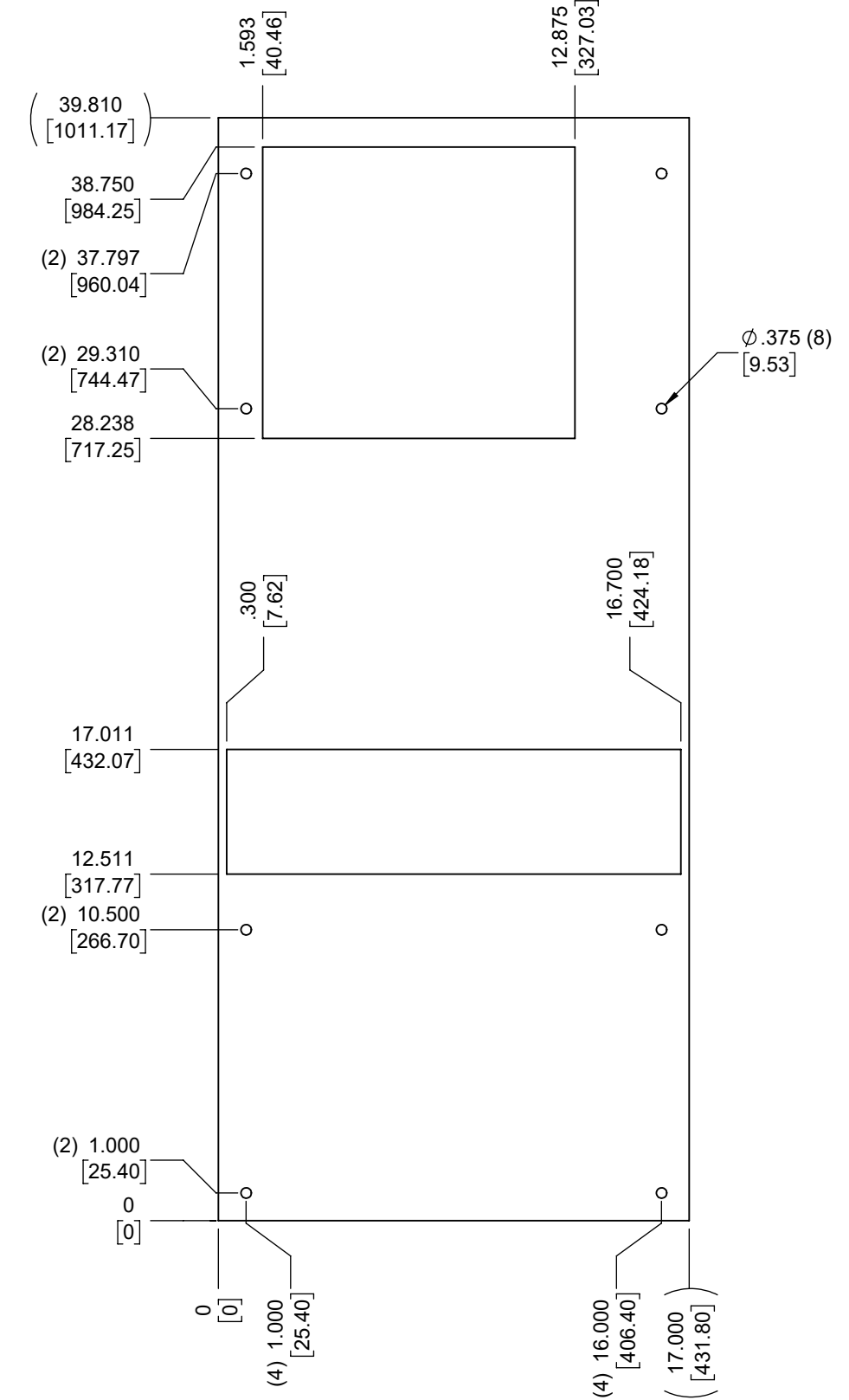
(2) PEM, STUD, 1/4"-20, 1" LG

TERMINAL BLOCK COVER

ENCLOSURE AIR EXHAUST

(6) PEM, NUT, 1/4-20

IMPORTANT
 GASKET MUST BE APPLIED AS SHOWN FOR PROPER OPERATION AND TO MAINTAIN NEMA INTEGRITY.



ITEM NUMBER N/A	USED ON IQ6100HE-Z2	UNLESS OTHERWISE SPECIFIED TOLERANCES X ±.060 .XX ±.030 .XXX ±.015 FRACTIONAL ±1/4 ANGULAR ±1/2°	<p>THIS IS A PROPRIETARY DOCUMENT. DO NOT REPRODUCE OR DISCLOSE WITHOUT THE EXPRESS WRITTEN PERMISSION OF ICE QUBE, INC.</p>
MATERIAL N/A		<p>EST WT: lbs</p> <p>DRAWN BY: RCC DATE: 1/21/2019 SCALE: 1:6</p> <p>DO NOT SCALE DRAWING DIMENSIONS ARE INCHES</p>	
DESCRIPTION IQ6100HE-Z2 SPEC DRAWING			DRAWING NUMBER IQ352108
REV C			