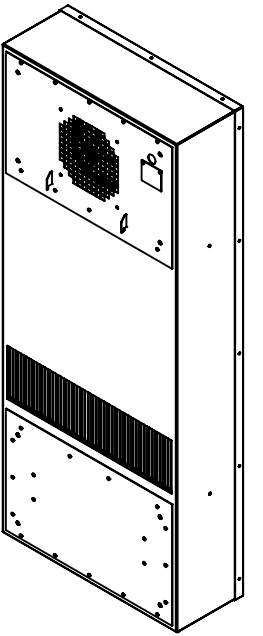
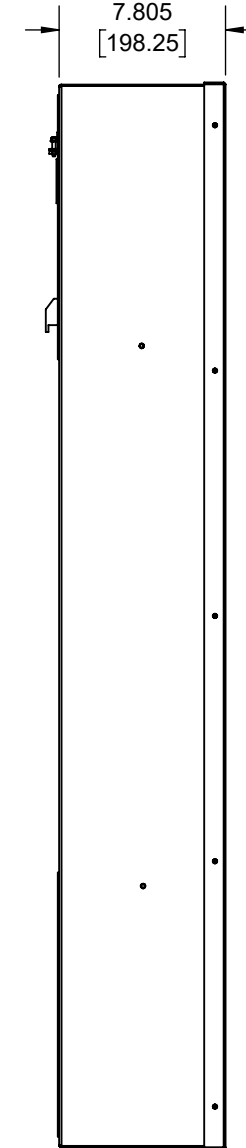
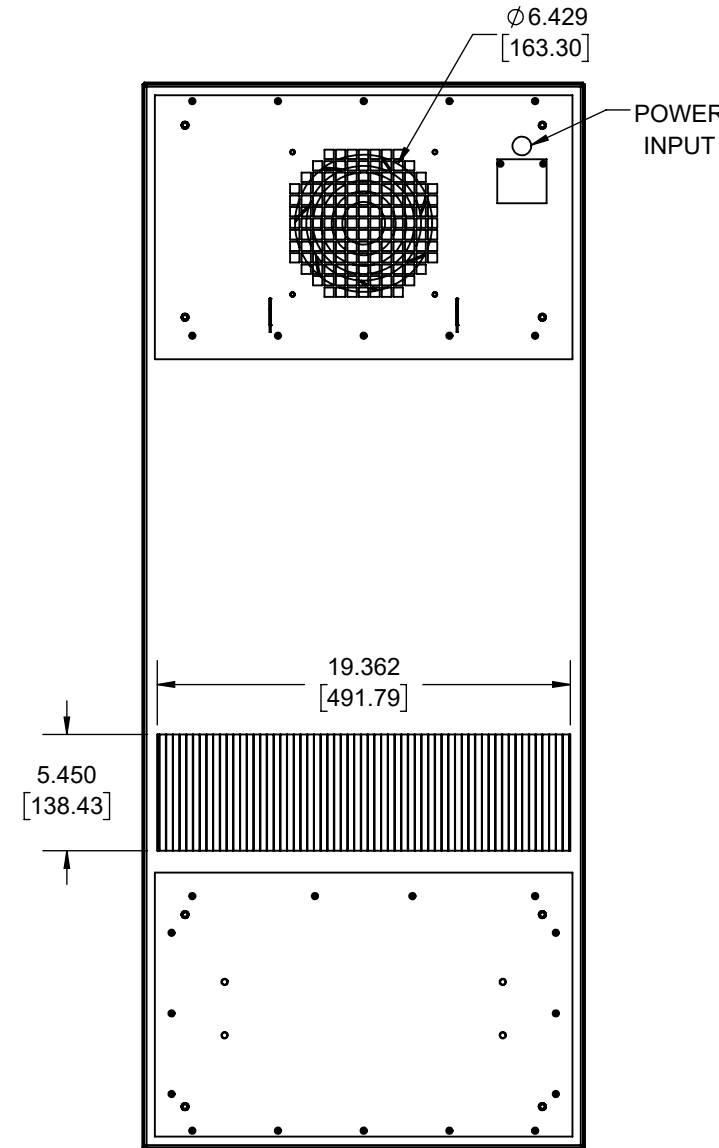
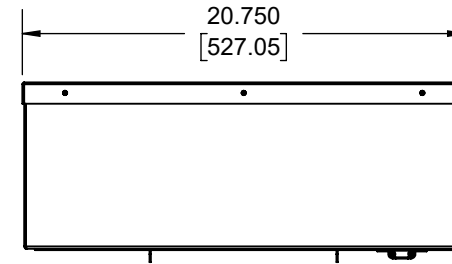
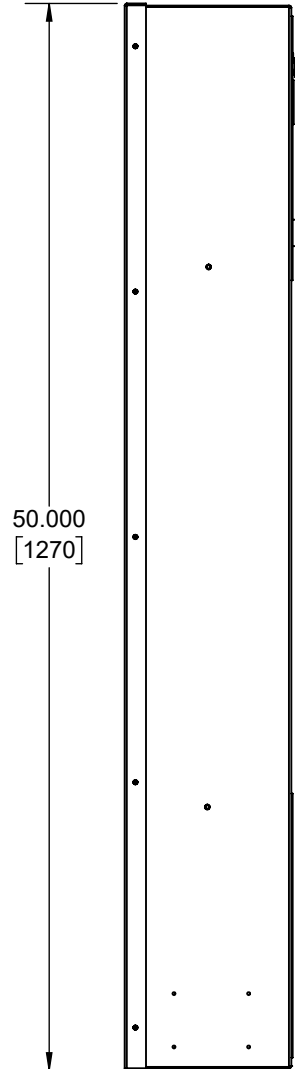
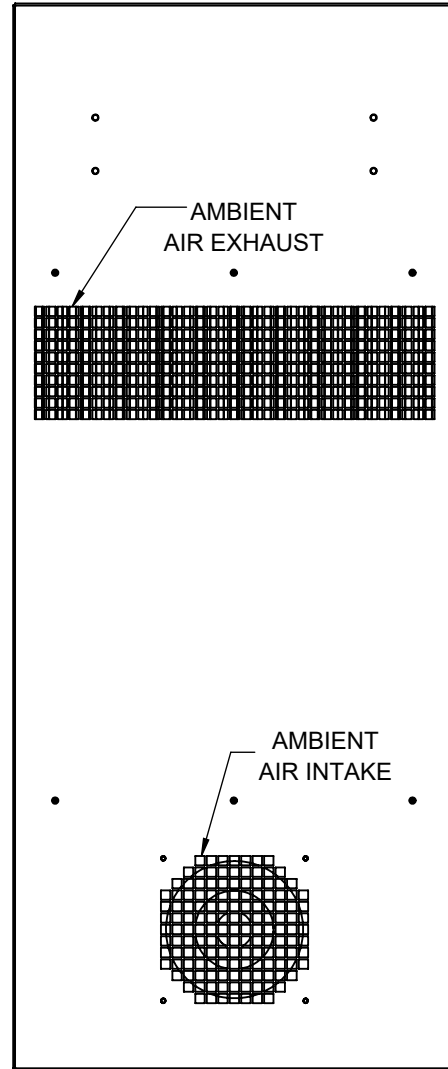
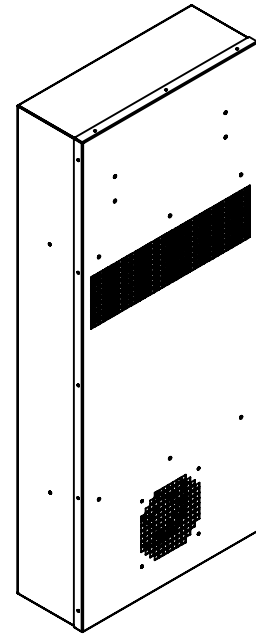


IQ10000HE-Z2 ZONE 2 ATEX IECEx CERTIFIED



IQ10000HE-Z2

CE 0539 II 3 G Ex nA nC IIC T6 Gc
 COOLING CAPACITY: 83 WATTS/°F
 MAXIMUM AMPS: 5.02A (602W) @ 120V/60HZ
 MAXIMUM AMPS: 1.52/1.67A (350/384W) @ 230V 60/50HZ
 MAXIMUM AMPS: 10.82A (260W) @ 24VDC
 MAXIMUM AMPS: 5.42A (260W) @ 48VDC
 MAINTAINS IP66 BETWEEN EQUIPMENT AND ENCLOSURE
 OPERATING TEMPERATURE: -40° - +60°C (T CODE: T6 @ 24/48VDC & 120/230VAC)
 OPERATING TEMPERATURE: -40° - +65°C (T CODE: T5 @ 24/48VDC)
 DIMENSIONS: 50.00" (1270MM) H X 20.75" (527MM) W X 7.81" (198MM) D
 WEIGHT: 100 LBS (45.4KG)

REV	REVISION	CHG	DATE	APP	DATE	CN #
C	REVISED CUTOUT	NAT	12/3/2020			
B	UPDATED OPERATING TEMP AND T CODE	RCC	4/4/2019			
A	INITIAL DRAFT	RCC	1/21/2019			

ITEM NUMBER N/A	USED ON IQ10000HE-Z2
MATERIAL N/A	
EST WT: lbs	
DRAWN BY RCC	DATE 1/21/2019
	SCALE 1:9

UNLESS OTHERWISE SPECIFIED TOLERANCES
.X ±.060
.XX ±.030
.XXX ±.015
FRACTIONAL ±1/16
ANGULAR ±1/2°
SURFACE FINISH 63
DO NOT SCALE DRAWING DIMENSIONS ARE INCHES

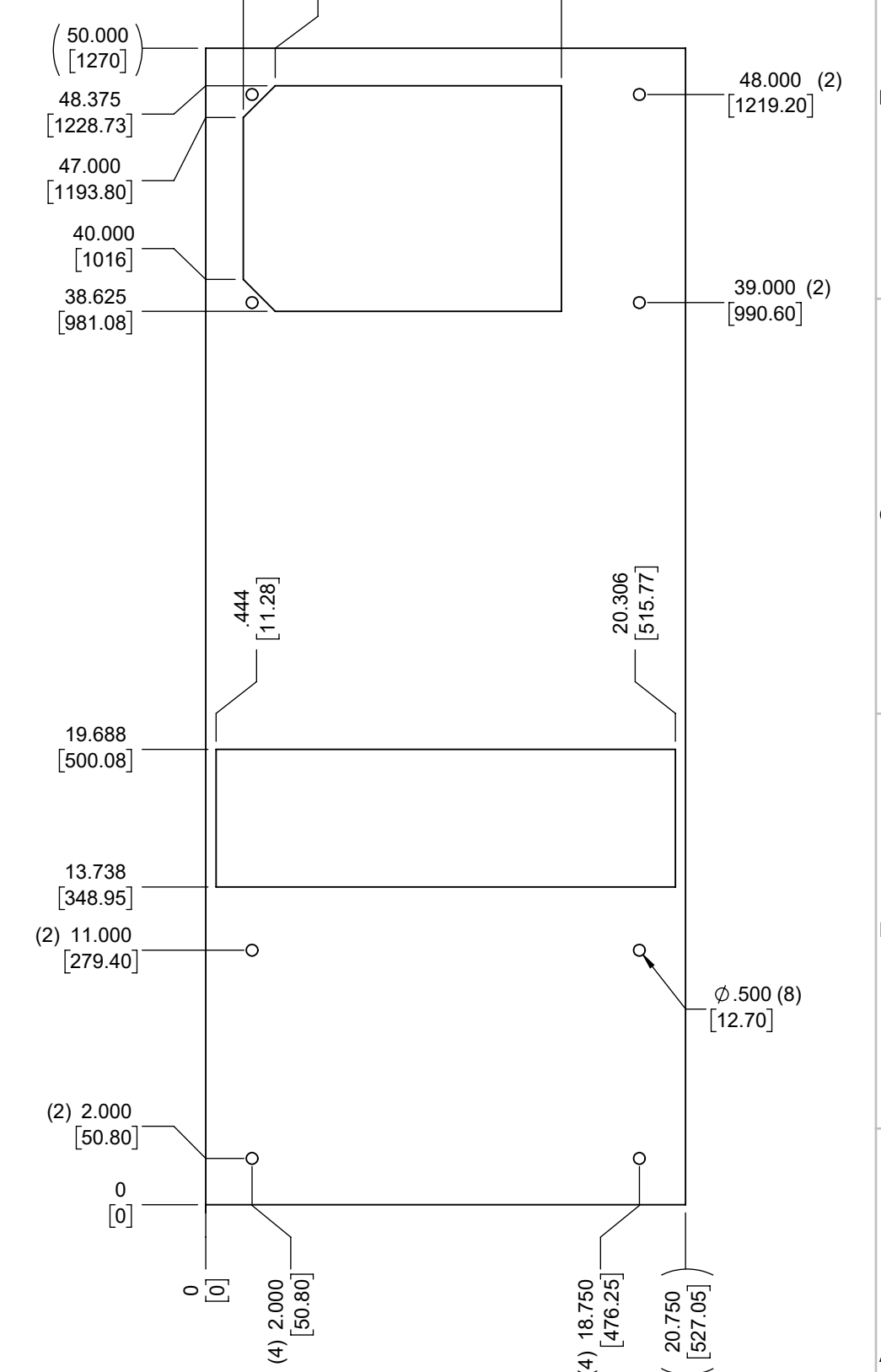
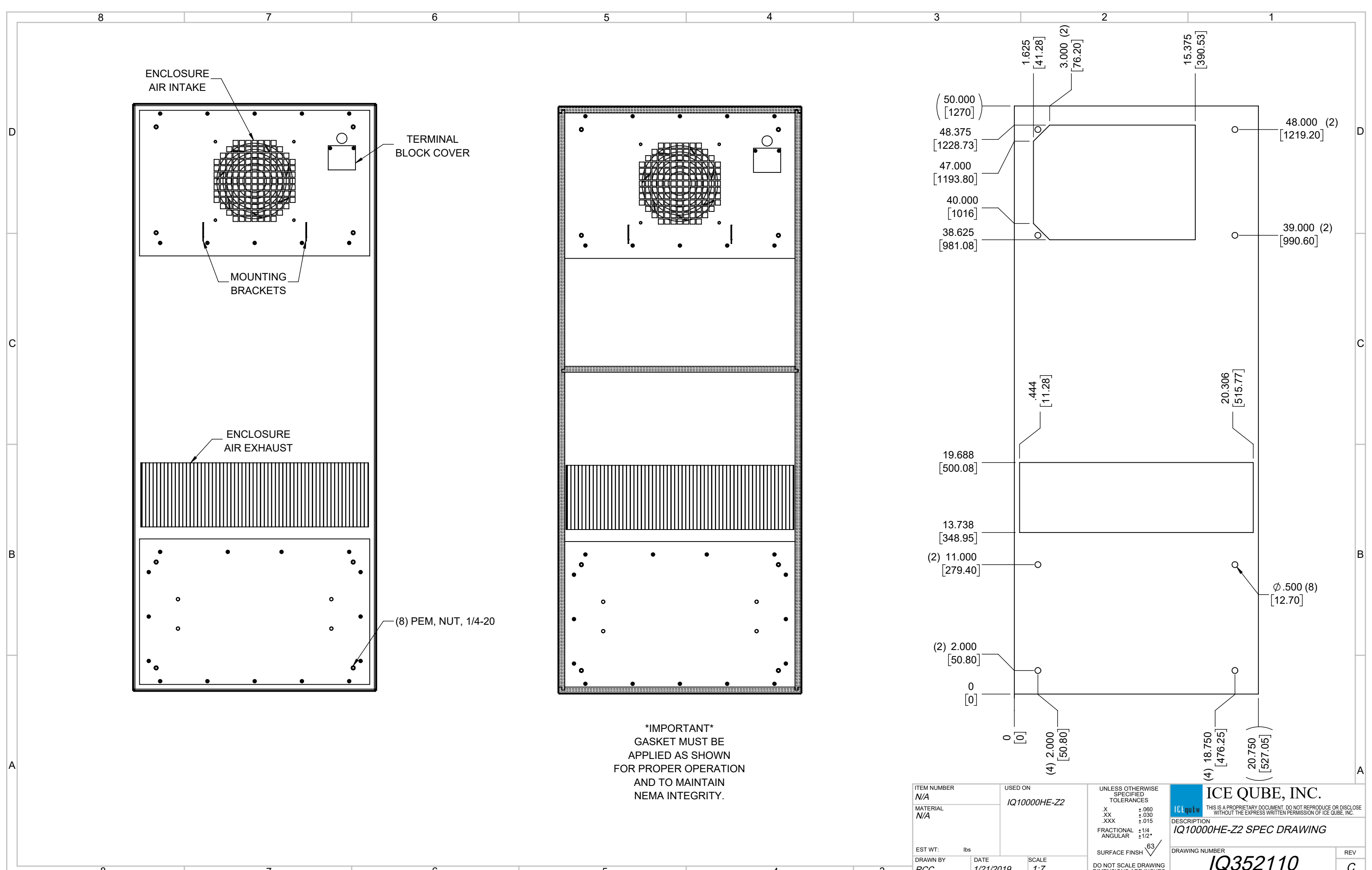
ICE QUBE, INC.

THIS IS A PROPRIETARY DOCUMENT. DO NOT REPRODUCE OR DISCLOSE WITHOUT THE EXPRESS WRITTEN PERMISSION OF ICE QUBE, INC.

DESCRIPTION
IQ10000HE-Z2 SPEC DRAWING

DRAWING NUMBER
IQ352110

REV
C



ITEM NUMBER N/A	USED ON IQ10000HE-Z2	UNLESS OTHERWISE SPECIFIED TOLERANCES X ±.060 .XX ±.030 .XXX ±.015 FRACTIONAL ±1/4 ANGULAR ±1/2°	<p>ICE QUBE, INC. THIS IS A PROPRIETARY DOCUMENT. DO NOT REPRODUCE OR DISCLOSE WITHOUT THE EXPRESS WRITTEN PERMISSION OF ICE QUBE, INC.</p>
MATERIAL N/A		<p>EST WT: lbs</p> <p>DRAWN BY: RCC DATE: 1/21/2019 SCALE: 1:7</p> <p>DO NOT SCALE DRAWING DIMENSIONS ARE INCHES</p>	
DESCRIPTION IQ10000HE-Z2 SPEC DRAWING			DRAWING NUMBER IQ352110
REV C			REV C