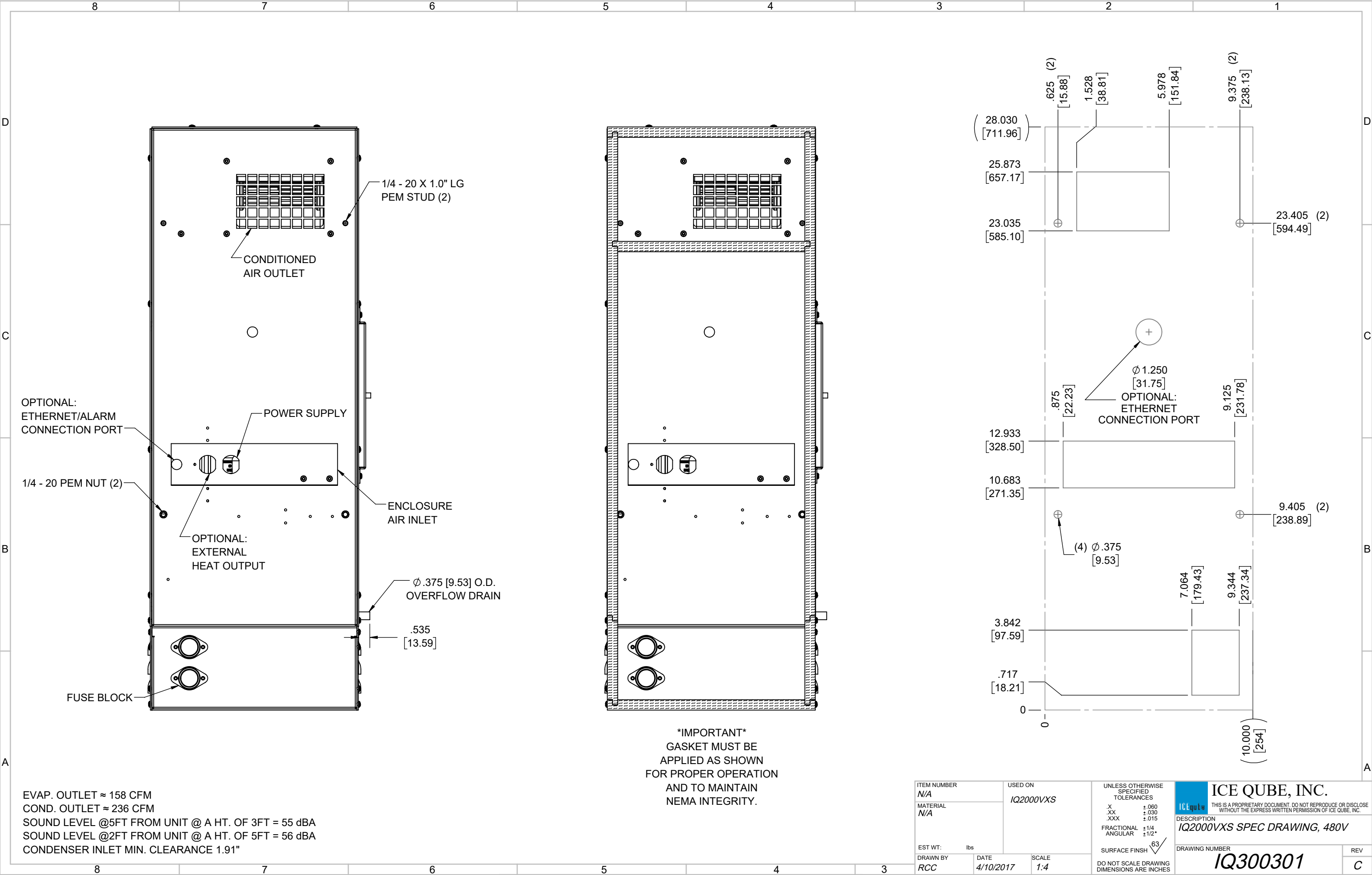


IQ2000VXS
COOLING CAPACITY: 2000 BTUH (587W) @131°F (55°C)
MAXIMUM AMPS: 1.6 (768W) @480V/60HZ
MAXIMUM OPERATING TEMP: 131°F (55°C)
MINIMUM OPERATING TEMP: -40°F (-40°C)
DIMENSIONS: 28.03" (712MM) H X 10.03" (255MM) W X 10.00" (254MM) D
WEIGHT: 74 LBS (33.6KG)

ITEM NUMBER							USED ON		UNLESS OTHERWISE SPECIFIED TOLERANCES		ICE QUBE, INC.	
N/A							IQ2000VXS		.X ±.060 .XX ±.030 .XXX ±.015		THIS IS A PROPRIETARY DOCUMENT. DO NOT REPRODUCE OR DISCLOSE WITHOUT THE EXPRESS WRITTEN PERMISSION OF ICE QUBE, INC.	
MATERIAL							EST WT: lbs		FRACTIONAL ±1/16 ANGULAR ±1/2°		DESCRIPTION	
N/A							DRAWN BY		DATE		SCALE	
RCC							RCC		4/10/2017		1:7	
REV							SURFACE FINISH		DO NOT SCALE DRAWING DIMENSIONS ARE INCHES		DRAWING NUMBER	
C							63				IQ300301	
B							DATE		DATE		REV	
A							1351				C	
C							ADDED CFM, dBA, AND CLEARANCE INFO		RCC		3/27/2018	
B							ADDED WATTAGE INFO		RCC		1/2/2018	
A							REDRAWN IN SW		RCC		4/10/2017	
REV							REVISION		CHG		DATE	



ITEM NUMBER N/A		USED ON IQ2000VXS		UNLESS OTHERWISE SPECIFIED TOLERANCES .X ±.060 .XX ±.030 .XXX ±.015 FRACTIONAL ±1/4 ANGULAR ±1/2° SURFACE FINISH 63 ✓ DO NOT SCALE DRAWING DIMENSIONS ARE INCHES		<div><div>ICE Qube</div><div>ICE QUBE, INC.</div><div>THIS IS A PROPRIETARY DOCUMENT. DO NOT REPRODUCE OR DISCLOSE WITHOUT THE EXPRESS WRITTEN PERMISSION OF ICE QUBE, INC.</div></div> <div>DESCRIPTION IQ2000VXS SPEC DRAWING, 480V</div>			
MATERIAL N/A									
EST WT: lbs									
DRAWN BY RCC		DATE 4/10/2017		SCALE 1:4		DRAWING NUMBER IQ300301		REV C	