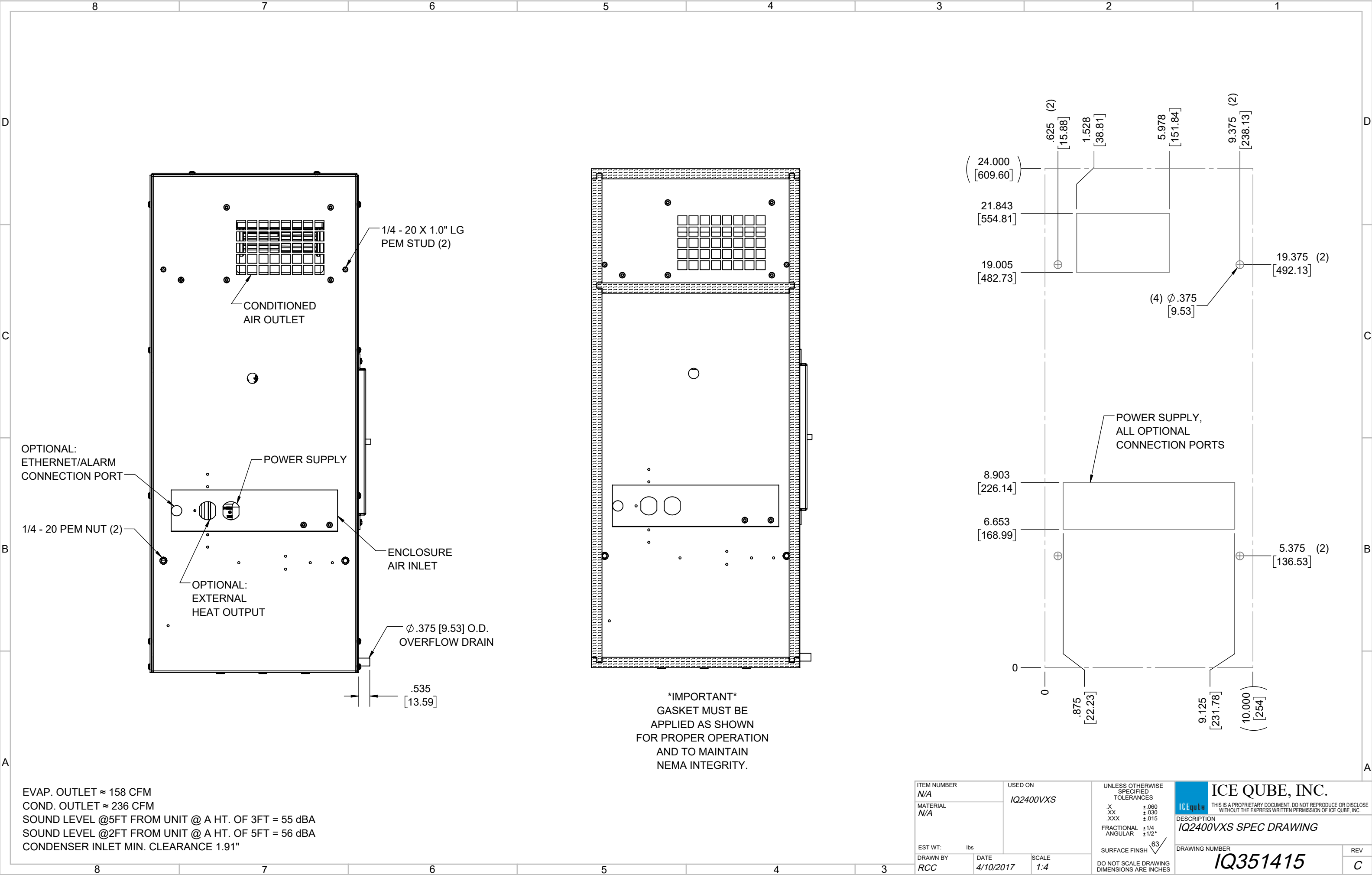


IQ2400VXS
COOLING CAPACITY: 2400 BTUH (704W) @131°F (55°C)
MAXIMUM AMPS: 7.1 (852W) @120V/60HZ
MAXIMUM AMPS: 3.5 (805W) @230V/60HZ
MAXIMUM OPERATING TEMP: 131°F (55°C)
MINIMUM OPERATING TEMP: -40°F (-40°C)
DIMENSIONS: 24.00" (610MM) H X 10.03" (255MM) W X 10.00" (254MM) D
WEIGHT: 60 LBS (27.3KG)

							ITEM NUMBER N/A		USED ON IQ2400VXS		UNLESS OTHERWISE SPECIFIED TOLERANCES X ±.060 XX ±.030 XXX ±.015 FRACTIONAL ±1/16 ANGULAR ±1/2° SURFACE FINISH 63 DO NOT SCALE DRAWING DIMENSIONS ARE INCHES		<div>ICE QUBE, INC.</div> <div>THIS IS A PROPRIETARY DOCUMENT. DO NOT REPRODUCE OR DISCLOSE WITHOUT THE EXPRESS WRITTEN PERMISSION OF ICE QUBE, INC.</div> <div>DESCRIPTION</div> <div>IQ2400VXS SPEC DRAWING</div> <div>DRAWING NUMBER</div> <div>IQ351415</div> <div>REV</div> <div>C</div>							
							MATERIAL N/A													
							EST WT: lbs								DATE		SCALE			
C	ADDED CFM, dBA, AND CLEARANCE INFO					RCC	3/28/2018													
B	ADDED WATTAGE INFO					RCC	1/2/2018													
A	REDRAWN IN SW					RCC	4/10/2017													
REV	REVISION					CHG	DATE	APP	DATE	CN #										



ITEM NUMBER <i>N/A</i>		USED ON <i>IQ2400VXS</i>		UNLESS OTHERWISE SPECIFIED TOLERANCES X ±.060 .XX ±.030 .XXX ±.015 FRACTIONAL ±1/4 ANGULAR ±1/2°		ICE QUBE, INC. THIS IS A PROPRIETARY DOCUMENT. DO NOT REPRODUCE OR DISCLOSE WITHOUT THE EXPRESS WRITTEN PERMISSION OF ICE QUBE, INC.	
MATERIAL <i>N/A</i>				SURFACE FINISH 63		DESCRIPTION <i>IQ2400VXS SPEC DRAWING</i>	
EST WT: lbs		DRAWN BY <i>RCC</i>		DATE <i>4/10/2017</i>		DRAWING NUMBER <i>IQ351415</i>	
		SCALE <i>1:4</i>		DO NOT SCALE DRAWING DIMENSIONS ARE INCHES		REV <i>C</i>	