


IQ2400VXS  
COOLING CAPACITY: 2400 BTUH (704W) @125°F (51.7°C)  
MAXIMUM AMPS: 1.7 (816W) @480V/60HZ  
MAXIMUM OPERATING TEMP: 125°F (51.7°C)  
MINIMUM OPERATING TEMP: -4°F (-20°C)  
DIMENSIONS: 28.03" (712MM) H X 10.03" (255MM) W X 10.00" (254MM) D  
WEIGHT: 94 LBS (42.7KG)

REVISION						
REV	REVISION	CHG	DATE	APP	DATE	CN #
D	CHANGED THERMOSTAT DIMENSIONS	NAT	2/24/2021			ECN-1434
C	ADDED CFM, dBA, AND CLEARANCE INFO	RCC	3/28/2018			1351
B	ADDED WATTAGE INFO	RCC	1/2/2018			
A	REDRAWN IN SW	RCC	4/10/2017			

ITEM NUMBER	N/A
MATERIAL	N/A
EST WT:	lbs
DRAWN BY	RCC

USED ON	IQ2400VXS
DATE	4/10/2017
SCALE	1:8

UNLESS OTHERWISE SPECIFIED TOLERANCES
.X ±.060
.XX ±.030
.XXX ±.015
FRACTIONAL ±1/16
ANGULAR ±1/2°
SURFACE FINISH 63
DO NOT SCALE DRAWING DIMENSIONS ARE INCHES

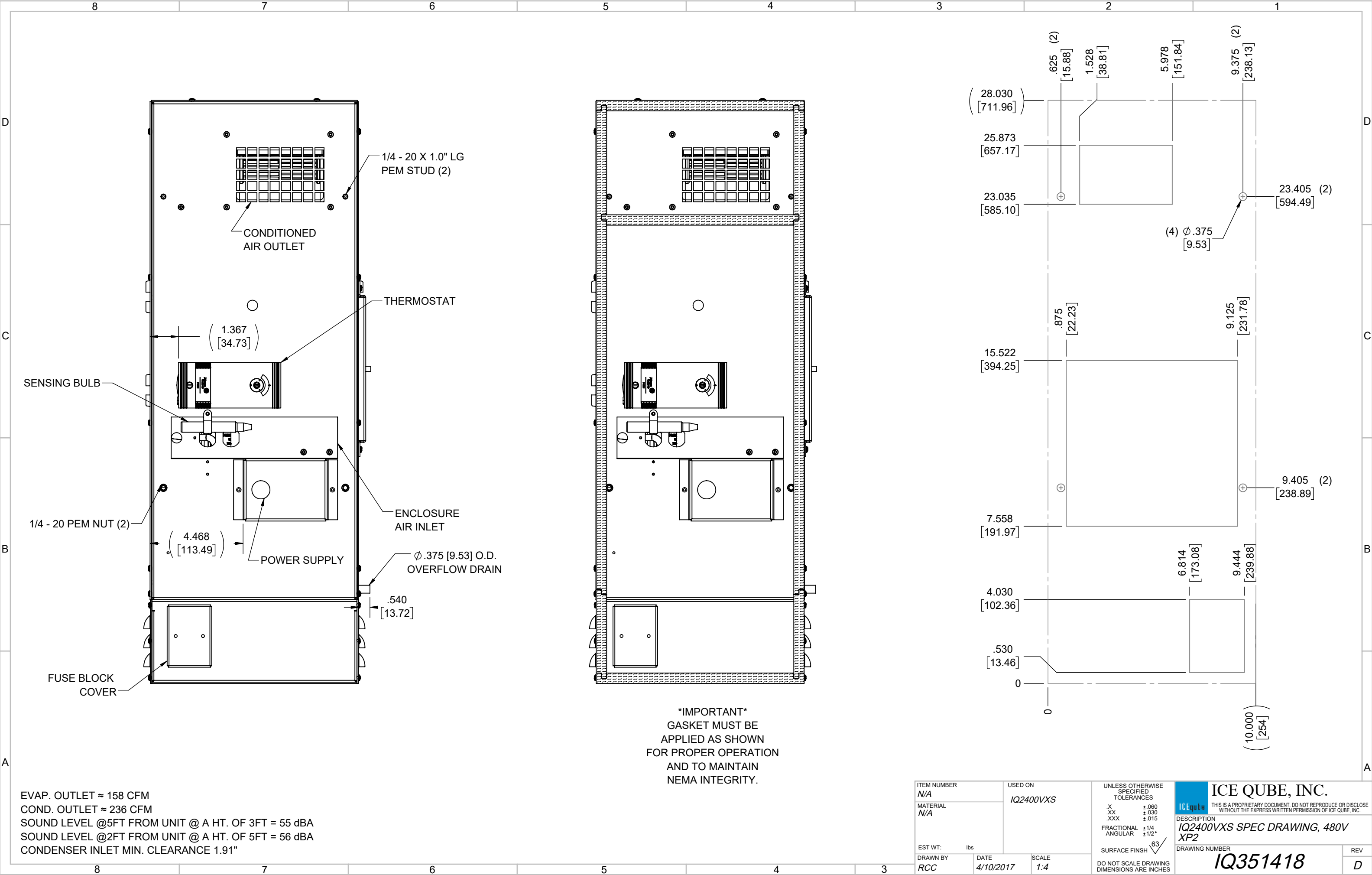


ICE QUBE, INC.  
THIS IS A PROPRIETARY DOCUMENT. DO NOT REPRODUCE OR DISCLOSE WITHOUT THE EXPRESS WRITTEN PERMISSION OF ICE QUBE, INC.

DESCRIPTION  
**IQ2400VXS SPEC DRAWING, 480V XP2**

DRAWING NUMBER  
**IQ351418**

REV  
**D**



EVAP. OUTLET ≈ 158 CFM  
COND. OUTLET ≈ 236 CFM  
SOUND LEVEL @5FT FROM UNIT @ A HT. OF 3FT = 55 dBA  
SOUND LEVEL @2FT FROM UNIT @ A HT. OF 5FT = 56 dBA  
CONDENSER INLET MIN. CLEARANCE 1.91"

**\*IMPORTANT\***  
GASKET MUST BE  
APPLIED AS SHOWN  
FOR PROPER OPERATION  
AND TO MAINTAIN  
NEMA INTEGRITY.

ITEM NUMBER N/A		USED ON  IQ2400VXS		UNLESS OTHERWISE SPECIFIED TOLERANCES  X ±.060 XX ±.030 XXX ±.015  FRACTIONAL ±1/4 ANGULAR ±1/2°  SURFACE FINISH 63 ✓  DO NOT SCALE DRAWING DIMENSIONS ARE INCHES		<div><div>ICE Qube</div><div>THIS IS A PROPRIETARY DOCUMENT. DO NOT REPRODUCE OR DISCLOSE WITHOUT THE EXPRESS WRITTEN PERMISSION OF ICE QUBE, INC.</div><div>DESCRIPTION IQ2400VXS SPEC DRAWING, 480V XP2</div><div>DRAWING NUMBER IQ351418</div></div>		REV  D	
MATERIAL N/A									
DRAWN BY RCC		DATE 4/10/2017		SCALE 1:4					