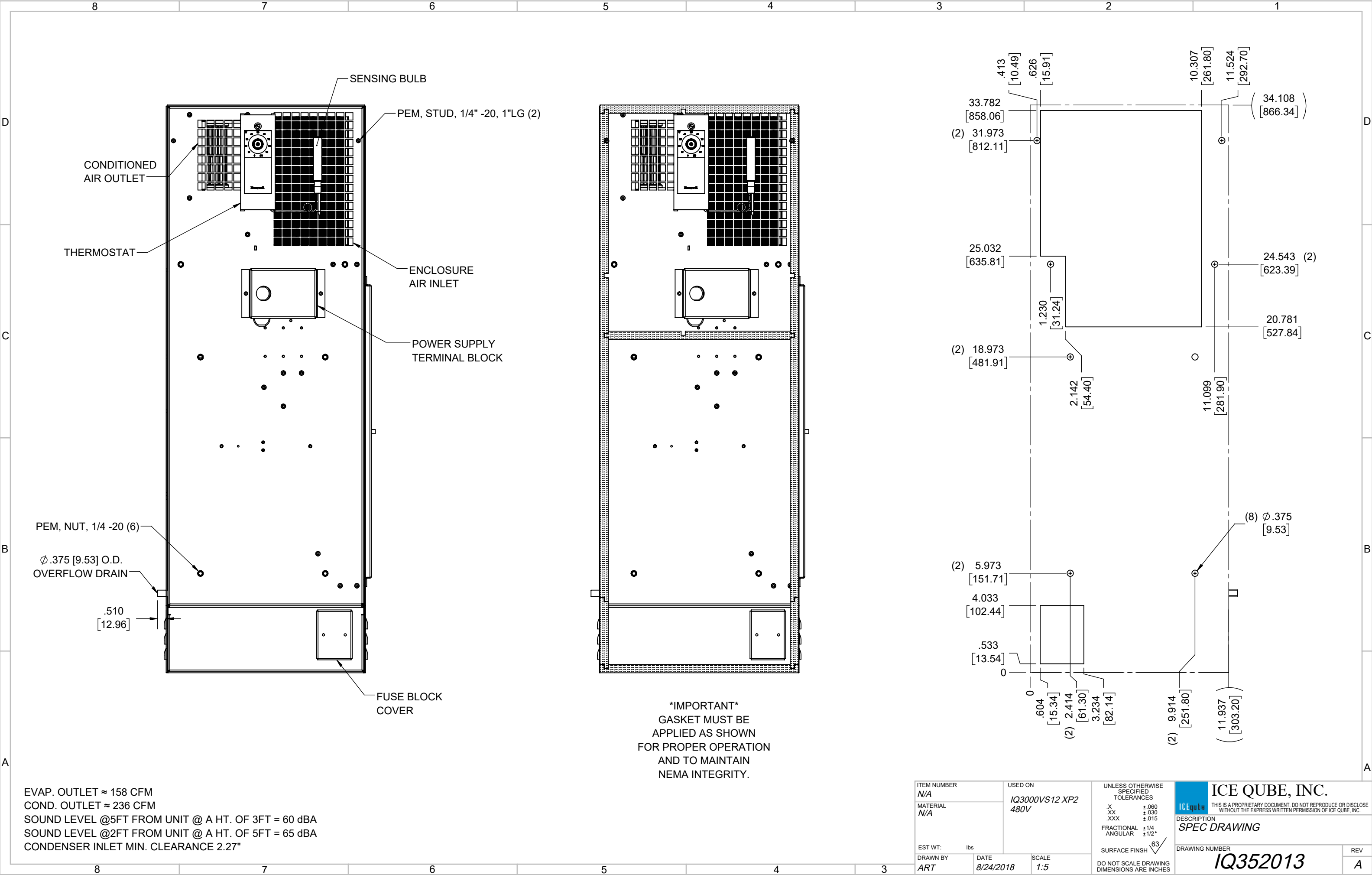


IQ3000VS12  
COOLING CAPACITY: 3000 BTUH (880W) @131°F (55°C)  
MAXIMUM AMPS: 1.6 (768W) @480V/60HZ  
MAXIMUM OPERATING TEMP: 131°F (55°C)  
MINIMUM OPERATING TEMP: -40°F (-40°C)  
DIMENSIONS: 34.12" (867MM) H X 11.99" (305MM) W X 6.34" (161MM) D  
WEIGHT: 90 LBS (40.9KG)

ITEM NUMBER N/A						USED ON IQ3000VS12 XP2 480V		UNLESS OTHERWISE SPECIFIED TOLERANCES X ±.060 .XX ±.030 .XXX ±.015 FRACTIONAL ±1/16 ANGULAR ±1/2° SURFACE FINISH 63		ICE QUBE, INC. THIS IS A PROPRIETARY DOCUMENT. DO NOT REPRODUCE OR DISCLOSE WITHOUT THE EXPRESS WRITTEN PERMISSION OF ICE QUBE, INC.	
MATERIAL N/A						EST WT: lbs		DRAWN BY ART		DATE 8/24/2018	
SCALE 1:7						DO NOT SCALE DRAWING DIMENSIONS ARE INCHES		DESCRIPTION SPEC DRAWING		DRAWING NUMBER IQ352013	
REV						A		REV		A	



EVAP. OUTLET ≈ 158 CFM  
COND. OUTLET ≈ 236 CFM  
SOUND LEVEL @5FT FROM UNIT @ A HT. OF 3FT = 60 dBA  
SOUND LEVEL @2FT FROM UNIT @ A HT. OF 5FT = 65 dBA  
CONDENSER INLET MIN. CLEARANCE 2.27"

ITEM NUMBER N/A		USED ON IQ3000VS12 XP2 480V		UNLESS OTHERWISE SPECIFIED TOLERANCES X ±.060 .XX ±.030 .XXX ±.015 FRACTIONAL ±1/4 ANGULAR ±1/2°		ICE QUBE, INC. THIS IS A PROPRIETARY DOCUMENT. DO NOT REPRODUCE OR DISCLOSE WITHOUT THE EXPRESS WRITTEN PERMISSION OF ICE QUBE, INC.	
MATERIAL N/A				SURFACE FINISH 63		DESCRIPTION SPEC DRAWING	
EST WT: lbs		DRAWN BY ART		DATE 8/24/2018		DRAWING NUMBER IQ352013	
		SCALE 1:5		DO NOT SCALE DRAWING DIMENSIONS ARE INCHES		REV A	