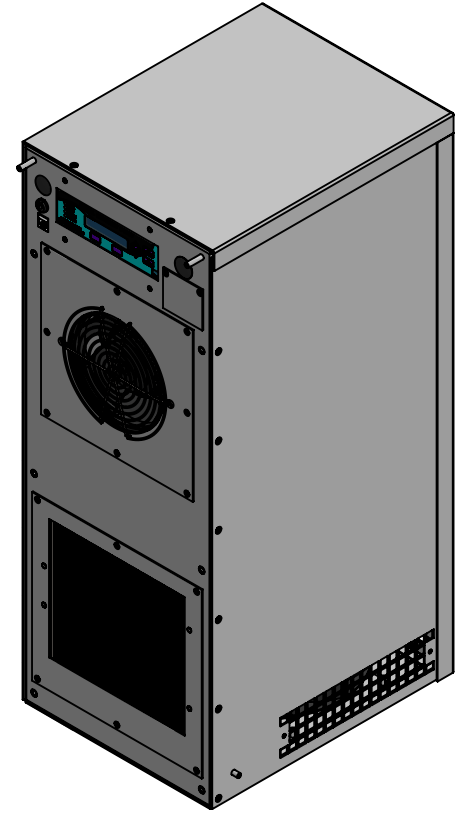
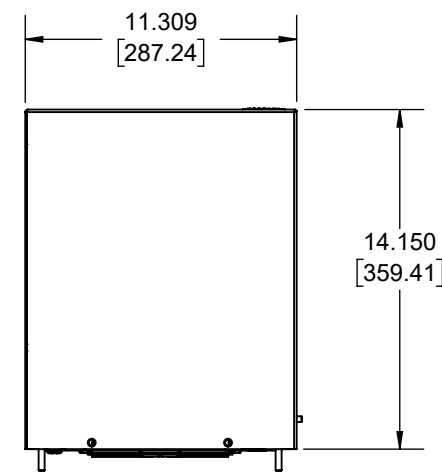
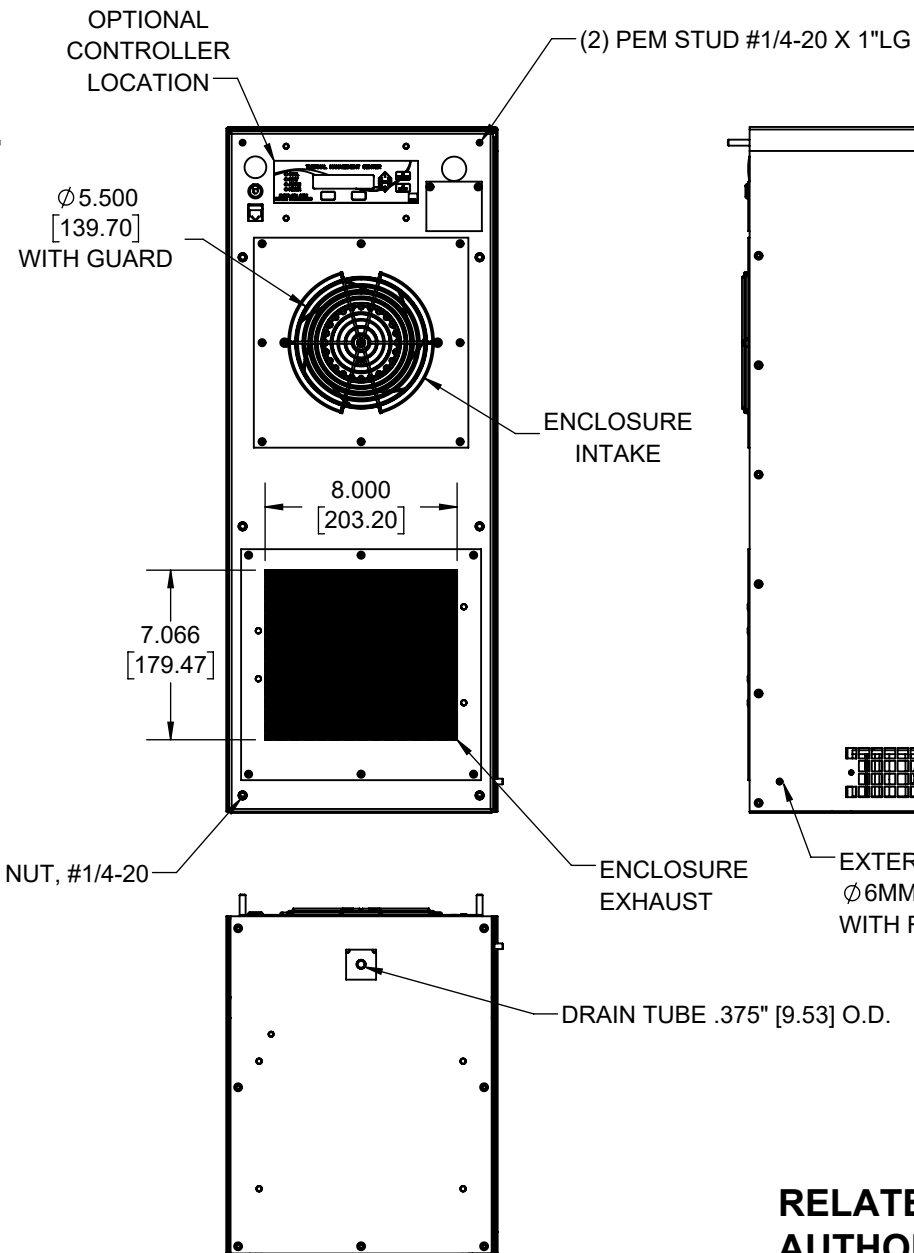
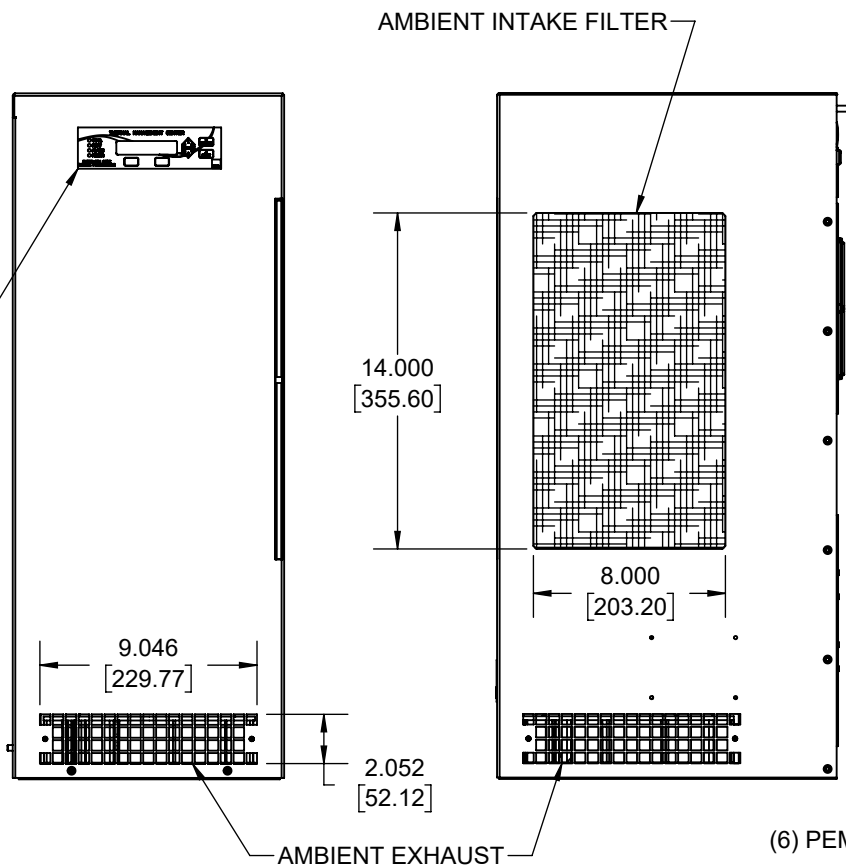



**IQ4000EVZ2**  
**CLASS I ZONE 2 AEx / Ex**  
**ZONE 2 ATEX / IECEx**  
**CERTIFIED**

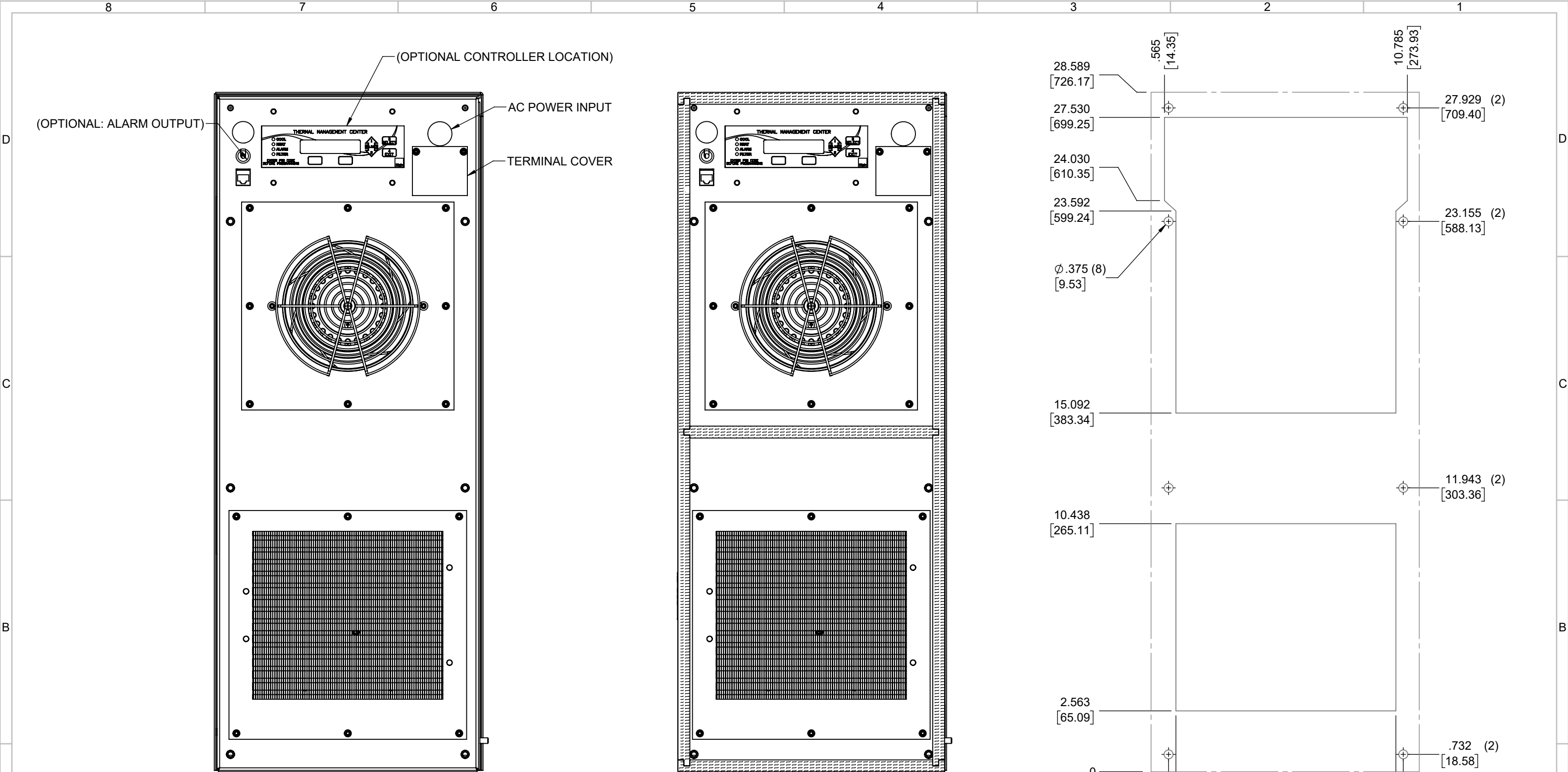


IQ4000EVZ2  
 AEx ec IIC T<sub>1</sub> Gc  
 Ex ec IIC T<sub>1</sub> Gc  
 II 3G Ex ec IIC T<sub>1</sub> Gc  
 NOMINAL COOLING CAPACITY:  
 4100 BTUH (1202W) @ 60-60°C  
 4400 BTUH (1290W) @ 35-35°C  
 MAXIMUM AMPS: 8.80 (1056W) @ 120V/60Hz  
 MAXIMUM AMPS: 3.86 (849W) @ 220V/50Hz  
 MAXIMUM AMPS: 4.73 (1088W) @ 230V/60Hz  
 MAXIMUM AMPS: 3.50 (840W) @ 240V/50Hz  
 MAXIMUM AMPS: 4.13 (990W) @ 240V/60Hz  
 MAXIMUM AMPS: 2.46 (984W) @ 400V/50Hz  
 MAXIMUM AMPS: 2.71 (1084W) @ 400V/60Hz  
 MAXIMUM AMPS: 2.02 (890W) @ 440V/50Hz  
 MAXIMUM AMPS: 2.25 (989W) @ 440V/60Hz  
 MAXIMUM AMPS: 2.17 (1042W) @ 480V/50Hz  
 MAXIMUM AMPS: 2.26 (1084W) @ 480V/60Hz  
 OPERATING VOLTAGE TOLERANCE:  $\pm 10\%$   
 OPERATING FREQUENCY TOLERANCE:  $\pm 3\text{Hz}$   
 MAINTAINS IP66 BETWEEN EQUIPMENT AND ENCLOSURE  
 OPERATING TEMPERATURE: -40°C - +60°C  
 T CODE: W/O CRANKCASE HEATER- T4  
 T CODE: W/ CRANKCASE HEATER- T3  
 DIMENSIONS: 28.584" (726MM) H x 11.309" (287MM) W x 14.1"  
 WEIGHT: 97.5 LBS (44.2KG) @ 120/220/230/240V  
 WEIGHT: 117.5 LBS (53.3KG) @ 400/440/480V  
 REFRIGERANT CHARGE: R134-A 19OZ (539G)



**RELATED DRAWING; DO NOT CHANGE WITHOUT  
AUTHORIZED PERSON APPROVAL.**

							ITEM NUMBER N/A	USED ON IQ4000EVZ2		UNLESS OTHERWISE SPECIFIED TOLERANCES .X ±.060 .XX ±.030 .XXX ±.015 FRACTIONAL ±1/16 ANGULAR ±1/2°  SURFACE FINISH 		<div>ICEcube</div> <div>THIS IS A PROPRIETARY DOCUMENT. DO NOT REPRODUCE OR DISCLOSE WITHOUT THE EXPRESS WRITTEN PERMISSION OF ICE CUBE, INC.</div> <div>DESCRIPTION IQ4000EVZ2 ZONE 2 ATEX IECEx SPEC DRAWING</div> <div>DRAWING NUMBER IQ351245</div>	REV F	
F	ADDED VOLTAGE AND FRQUENCY TOLERANCE					NAT	9/2/2022							
E	UPDATE AMPS					JJH	8/31/2022							
D	ADDED AEx AND Ex CERTIFICATION INFORMATION					NAT	4/26/2021			21-0186				
C	ADDED CFM, dBA, 240V AND 440V 50/60HZ, AND CLEARANCE INFO					RCC	4/26/2018	JGG	5/11/2018	1347				
B	ADDED METRIC VALUES					ART	1/10/2018	JGG	1/10/2018	1336				
REV	REVISION					CHG	DATE	APP	DATE	CN #	JGG	DRAWN BY 12-5-16	SCALE 1:8	DO NOT SCALE DRAWING DIMENSIONS ARE INCHES



**\*IMPORTANT\***  
**GASKET MUST BE APPLIED AS SHOWN FOR PROPER**  
**OPERATION AND TO MAINTAIN ENCLOSURE INTEGRITY**

EVAP. OUTLET ≈ 360 CFM  
COND. OUTLET ≈ 510 CFM  
SOUND LEVEL @5FT FROM UNIT @ A HT. OF 3FT = 62 dBA  
SOUND LEVEL @2FT FROM UNIT @ A HT. OF 5FT = 65 dBA  
CONDENSER INLET MIN. CLEARANCE 2.54"

ITEM NUMBER N/A		USED ON IQ4000EVZ2		UNLESS OTHERWISE SPECIFIED TOLERANCES .X ±.060 .XX ±.030 .XXX ±.015 FRACTIONAL ±1/4 ANGULAR ±1/2°		ICE QUBE, INC. THIS IS A PROPRIETARY DOCUMENT. DO NOT REPRODUCE OR DISCLOSE WITHOUT THE EXPRESS WRITTEN PERMISSION OF ICE QUBE, INC.	
MATERIAL N/A		EST WT: lbs		SURFACE FINISH 63		DESCRIPTION IQ4000EVZ2 ZONE 2 ATEX IECEx SPEC DRAWING	
DRAWN BY JGG		DATE 12-5-16		SCALE 1:4		DRAWING NUMBER IQ351245	
						REV F	