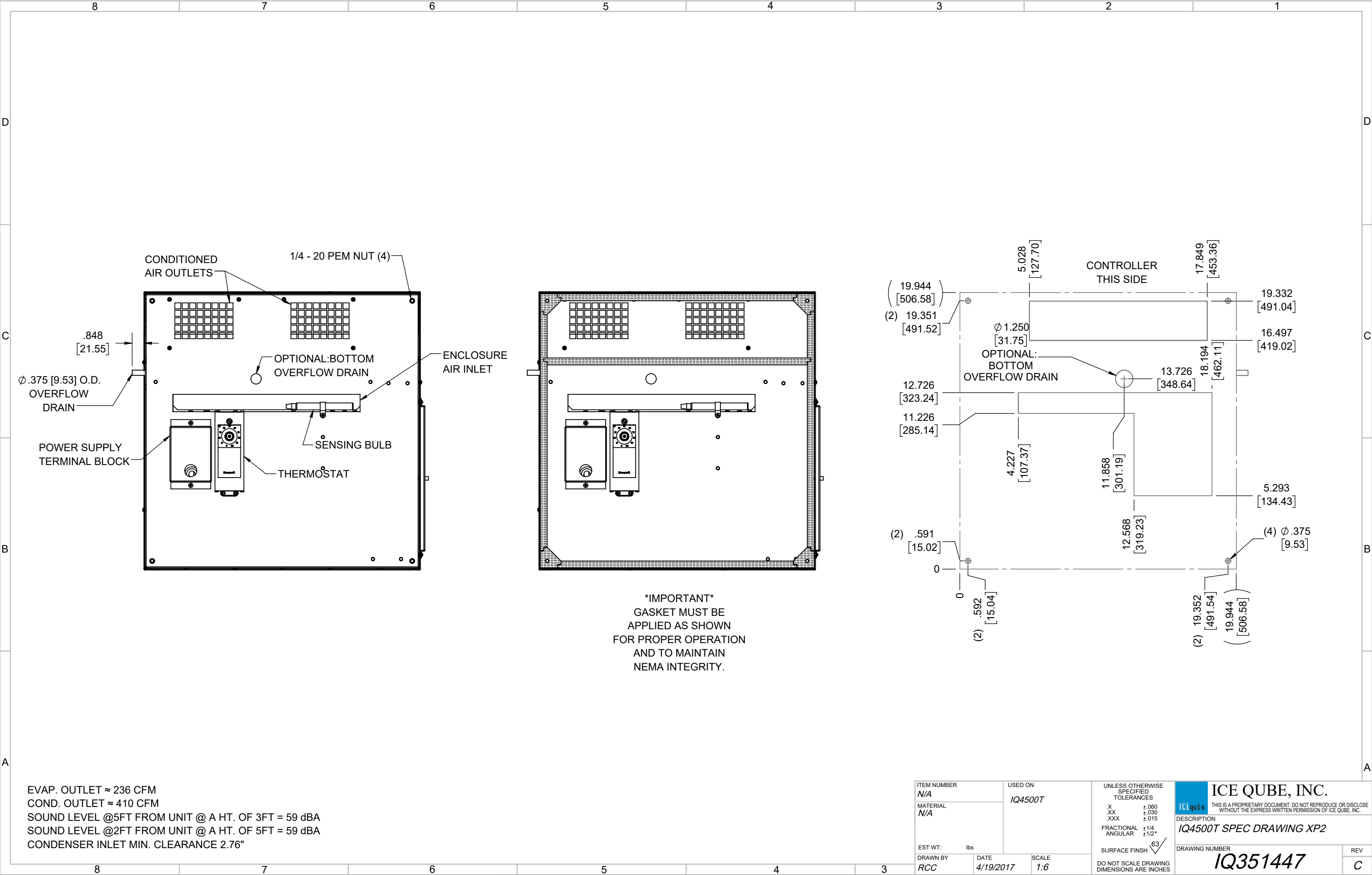


IQ4500T
COOLING CAPACITY: 4500 BTUH (1320W) @131°F (55°C)
MAXIMUM AMPS: 8.5 (1020W) @120V/60HZ
MAXIMUM AMPS: 4.2 (966W) @230V/60HZ
MAXIMUM OPERATING TEMP: 131°F (55°C)
MINIMUM OPERATING TEMP: -4°F (-20°C)
DIMENSIONS: 12.06" (306MM) H X 19.94" (507MM) W X 20.06" (510MM) D
WEIGHT: 89 LBS (40.5KG)

ITEM NUMBER							USED ON		UNLESS OTHERWISE SPECIFIED TOLERANCES		ICE QUBE, INC.	
N/A							IQ4500T		.X ±.060 .XX ±.030 .XXX ±.015		THIS IS A PROPRIETARY DOCUMENT. DO NOT REPRODUCE OR DISCLOSE WITHOUT THE EXPRESS WRITTEN PERMISSION OF ICE QUBE, INC.	
MATERIAL							EST WT: lbs		FRACTIONAL ±1/16 ANGULAR ±1/2°		DESCRIPTION	
N/A							DRAWN BY		SCALE		DRAWING NUMBER	
RCC							DATE		1:9		IQ351447	
RCC							4/19/2017		DO NOT SCALE DRAWING DIMENSIONS ARE INCHES		REV	
C							1351		SURFACE FINISH		C	
B							ADDED WATTAGE INFO		DATE		REV	
A							REDRAWN IN SW		APP		C	
REV							REVISION		DATE		C	
C							ADDED CFM, dBA, AND CLEARANCE INFO		CHG		C	
B							ADDED WATTAGE INFO		DATE		C	
A							REDRAWN IN SW		APP		C	
REV							REVISION		DATE		C	



EVAP. OUTLET ≈ 236 CFM
COND. OUTLET ≈ 410 CFM
SOUND LEVEL @5FT FROM UNIT @ A HT. OF 3FT = 59 dBA
SOUND LEVEL @2FT FROM UNIT @ A HT. OF 5FT = 59 dBA
CONDENSER INLET MIN. CLEARANCE 2.76"

ITEM NUMBER N/A		USED ON IQ4500T		UNLESS OTHERWISE SPECIFIED TOLERANCES .X ±.060 .XX ±.030 .XXX ±.015 FRACTIONAL ±1/4 ANGULAR ±1/2°		ICE QUBE, INC. THIS IS A PROPRIETARY DOCUMENT. DO NOT REPRODUCE OR DISCLOSE WITHOUT THE EXPRESS WRITTEN PERMISSION OF ICE QUBE, INC.	
MATERIAL N/A				SURFACE FINISH 63		DESCRIPTION IQ4500T SPEC DRAWING XP2	
EST WT: lbs		DRAWN BY RCC		DATE 4/19/2017		SCALE 1:6	
						DRAWING NUMBER IQ351447	
						REV C	