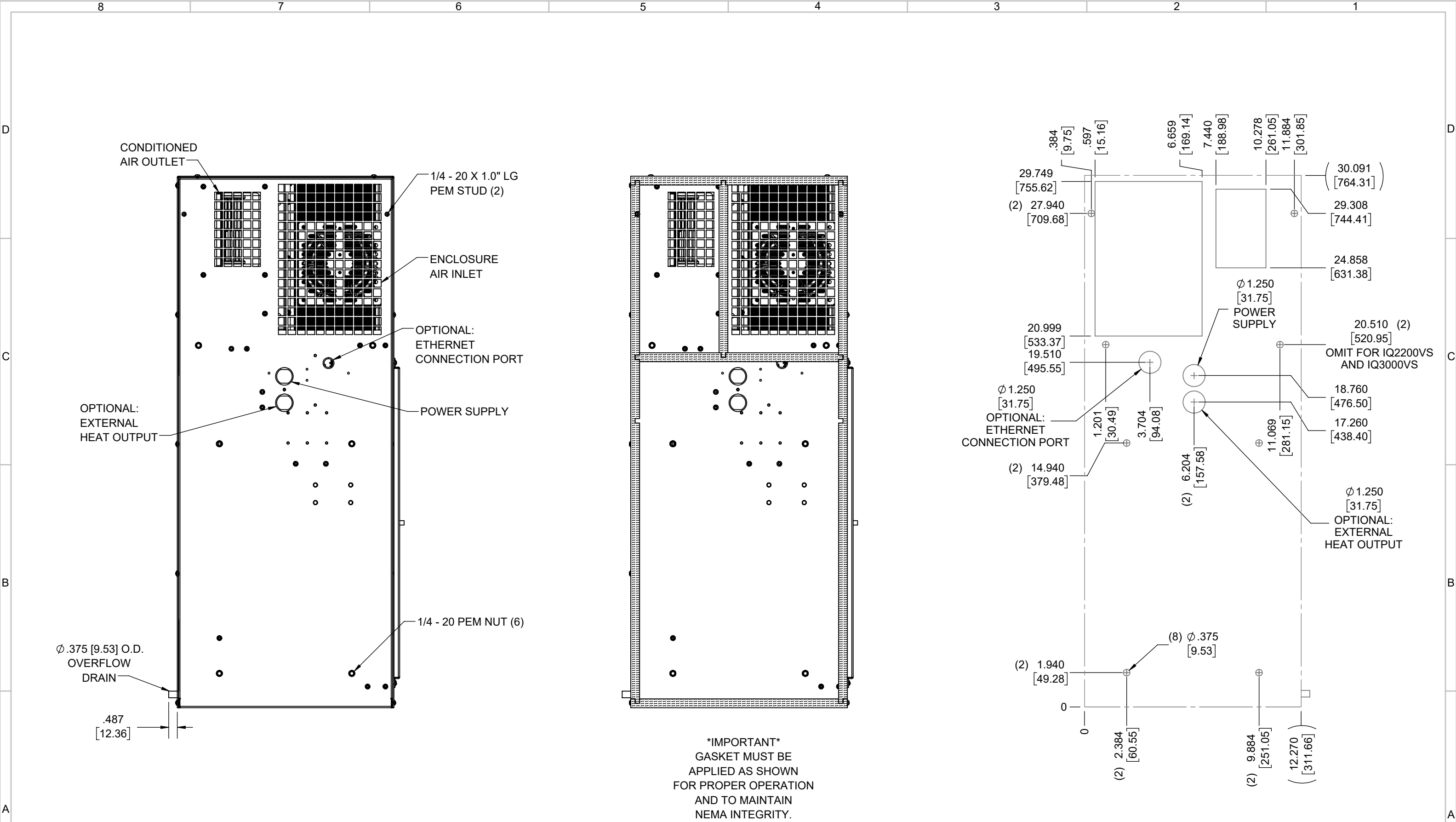
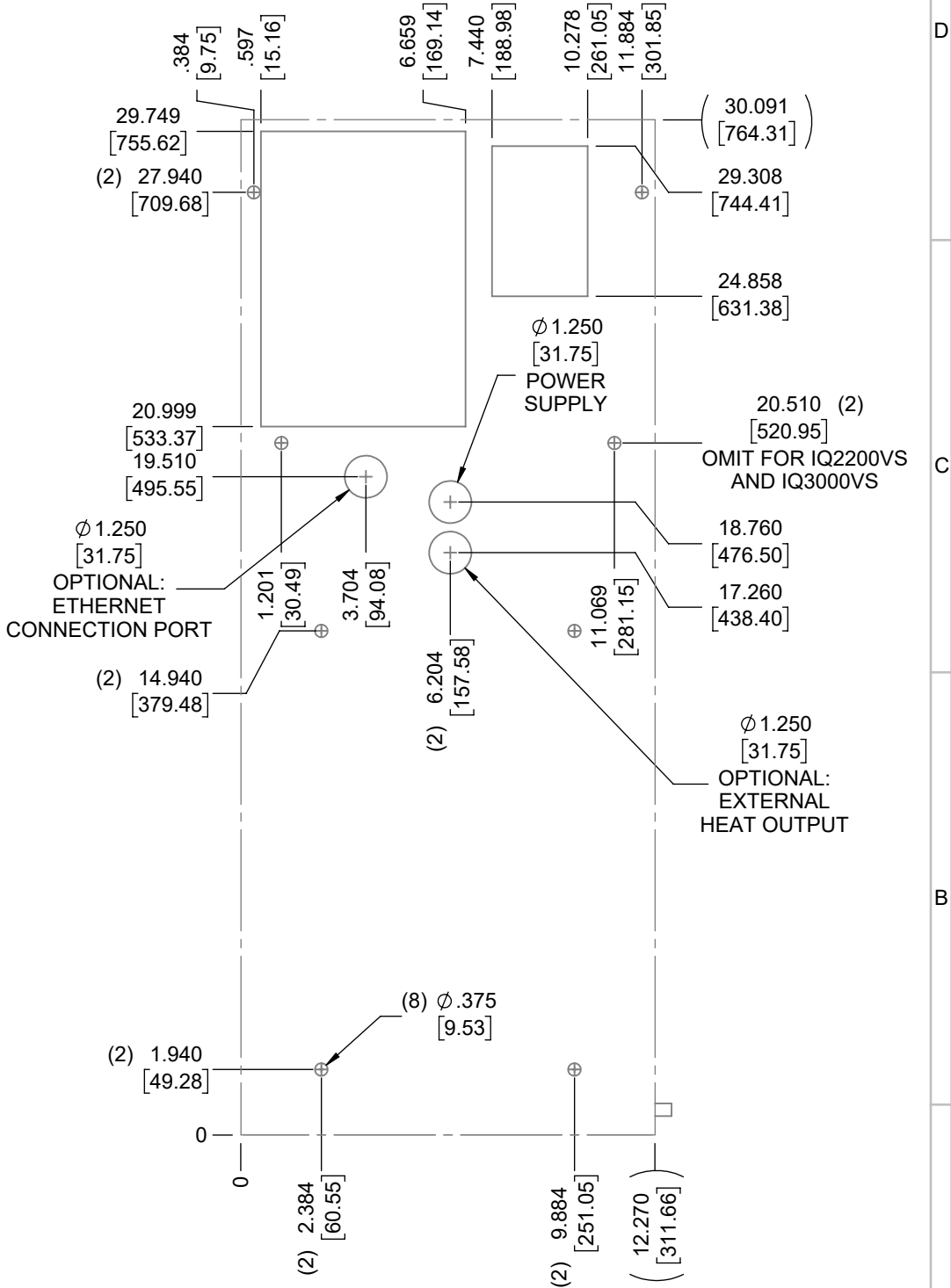



IQ5500VS
COOLING CAPACITY: 5500 BTUH (1613W) @131°F (55°C)
MAXIMUM AMPS: 10.4 (1248W) @120V/60HZ
MAXIMUM AMPS: 5.2/5.7 (1196/1254W) @230/220V 60/50HZ
MAXIMUM OPERATING TEMP: 131°F (55°C)
MINIMUM OPERATING TEMP: -40°F (-40°C)
DIMENSIONS: 30.09" (764MM) H X 12.27" (312MM) W X 10.39" (264MM) D
WEIGHT: 75 LBS (34.1KG)

							ITEM NUMBER N/A		USED ON IQ5500VS		UNLESS OTHERWISE SPECIFIED TOLERANCES		<div>ICE QUBE, INC.</div> <div>THIS IS A PROPRIETARY DOCUMENT. DO NOT REPRODUCE OR DISCLOSE WITHOUT THE EXPRESS WRITTEN PERMISSION OF ICE QUBE, INC.</div> <div>DESCRIPTION IQ5500VS SPEC DRAWING</div> <div>DRAWING NUMBER IQ300216</div>		REV C	
							MATERIAL N/A				X ±.060 XX ±.030 XXX ±.015					
							EST WT: lbs		FRACTIONAL ±1/16 ANGULAR ±1/2°		SURFACE FINISH					
							DRAWN BY RCC		DATE 4/11/2017		SCALE 1:7					
C	ADDED CFM, dBA, AND CLEARANCE INFO					RCC	3/28/2018				1351					
B	ADDED WATTAGE INFO					RCC	1/3/2018									
A	REDRAWN IN SW					RCC	4/11/2017									
REV	REVISION					CHG	DATE	APP	DATE	CN #						



EVAP. OUTLET ≈ 158 CFM
COND. OUTLET ≈ 410 CFM
SOUND LEVEL @5FT FROM UNIT @ A HT. OF 3FT = 64 dBA
SOUND LEVEL @2FT FROM UNIT @ A HT. OF 5FT = 61 dBA
CONDENSER INLET MIN. CLEARANCE 3.23"



ITEM NUMBER N/A		USED ON IQ5500VS		UNLESS OTHERWISE SPECIFIED TOLERANCES X ±.060 XX ±.030 XXX ±.015 FRACTIONAL ±1/4 ANGULAR ±1/2°		<div> ICE QUBE, INC. THIS IS A PROPRIETARY DOCUMENT. DO NOT REPRODUCE OR DISCLOSE WITHOUT THE EXPRESS WRITTEN PERMISSION OF ICE QUBE, INC.</div> <div>DESCRIPTION IQ5500VS SPEC DRAWING</div>			
MATERIAL N/A				SURFACE FINISH 63 DO NOT SCALE DRAWING DIMENSIONS ARE INCHES					
EST WT: lbs						DRAWING NUMBER IQ300216		REV C	
DRAWN BY RCC		DATE 4/11/2017		SCALE 1:5					