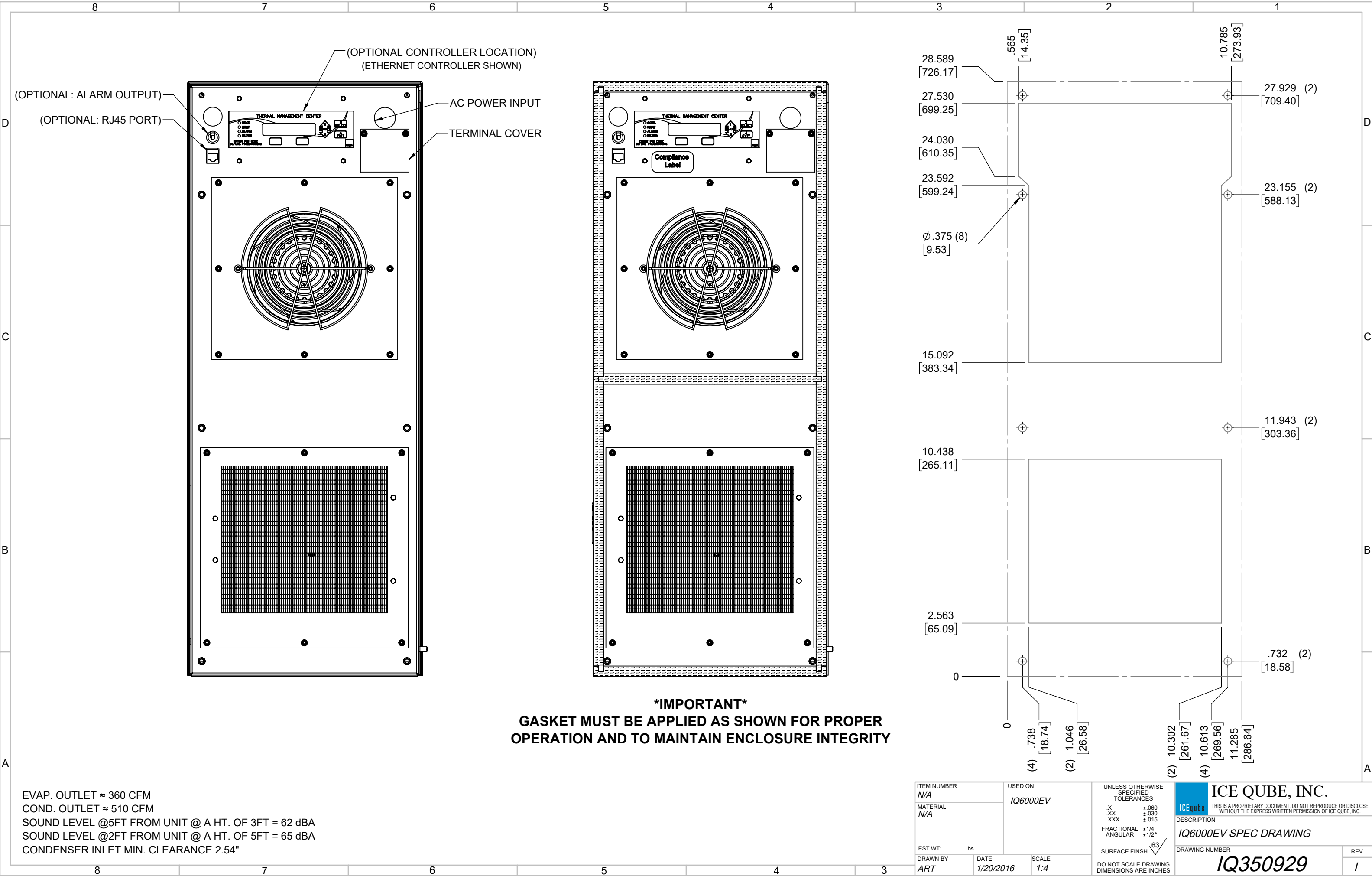


IQ6000EV
NOMINAL COOLING CAPACITY:
6500 BTUH (1905W) @ 140-140°F (60°C-60°C)
5800 BTUH (1700W) @ 95-95°F (35°C-35°C)
MAXIMUM AMPS: 8.83 (1060W) @ 120V/60Hz
MAXIMUM AMPS: 3.88 (854W) @ 220V/50Hz
MAXIMUM AMPS: 4.75 (1093W) @ 230V/60Hz
MAXIMUM AMPS: 2.72 (1088W) @ 400V/50Hz
MAXIMUM AMPS: 2.73 (1092W) @ 400V/60Hz
MAXIMUM AMPS: 2.18 (1046W) @ 480V/50Hz
MAXIMUM AMPS: 2.27 (1089W) @ 480V/60Hz
OPERATING VOLTAGE TOLERANCE: ±10%
OPERATING FREQUENCY TOLERANCE: ±3HZ
MAXIMUM OPERATING TEMPERATURE: 140°F (60°C)
DIMENSIONS: 28.584" (726MM) H x 11.309" (287MM) W x 14.150" (359MM) D
WEIGHT: 97.5 LBS (44.2KG) @ 120/220/230V
WEIGHT: 117.5 LBS (53.3KG) @ 400/480V
REFRIGERANT CHARGE: R134-A 28OZ (794G)

ITEM NUMBER N/A						USED ON IQ6000EV		UNLESS OTHERWISE SPECIFIED TOLERANCES		ICE QUBE, INC.	
MATERIAL N/A								.X ±.060 .XX ±.030 .XXX ±.015		THIS IS A PROPRIETARY DOCUMENT. DO NOT REPRODUCE OR DISCLOSE WITHOUT THE EXPRESS WRITTEN PERMISSION OF ICE QUBE, INC.	
EST WT: lbs								FRACTIONAL ±1/16 ANGULAR ±1/2°		DESCRIPTION IQ6000EV SPEC DRAWING	
DRAWN BY ART						DATE 1/20/2016		SCALE 1:8		DRAWING NUMBER IQ350929	
REV								SURFACE FINISH 63		REV 1	
ADDED VOLTAGE AND FREQUENCY TOLERANCE											
UPDATE AMPS											
ADDED CFM, dBA, AND CLEARANCE INFO											
UPDATED UNIT DATA											
REVISION											



EVAP. OUTLET ≈ 360 CFM
COND. OUTLET ≈ 510 CFM
SOUND LEVEL @5FT FROM UNIT @ A HT. OF 3FT = 62 dBA
SOUND LEVEL @2FT FROM UNIT @ A HT. OF 5FT = 65 dBA
CONDENSER INLET MIN. CLEARANCE 2.54"

IMPORTANT
GASKET MUST BE APPLIED AS SHOWN FOR PROPER OPERATION AND TO MAINTAIN ENCLOSURE INTEGRITY