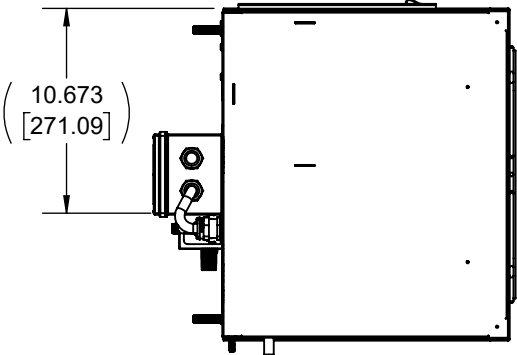
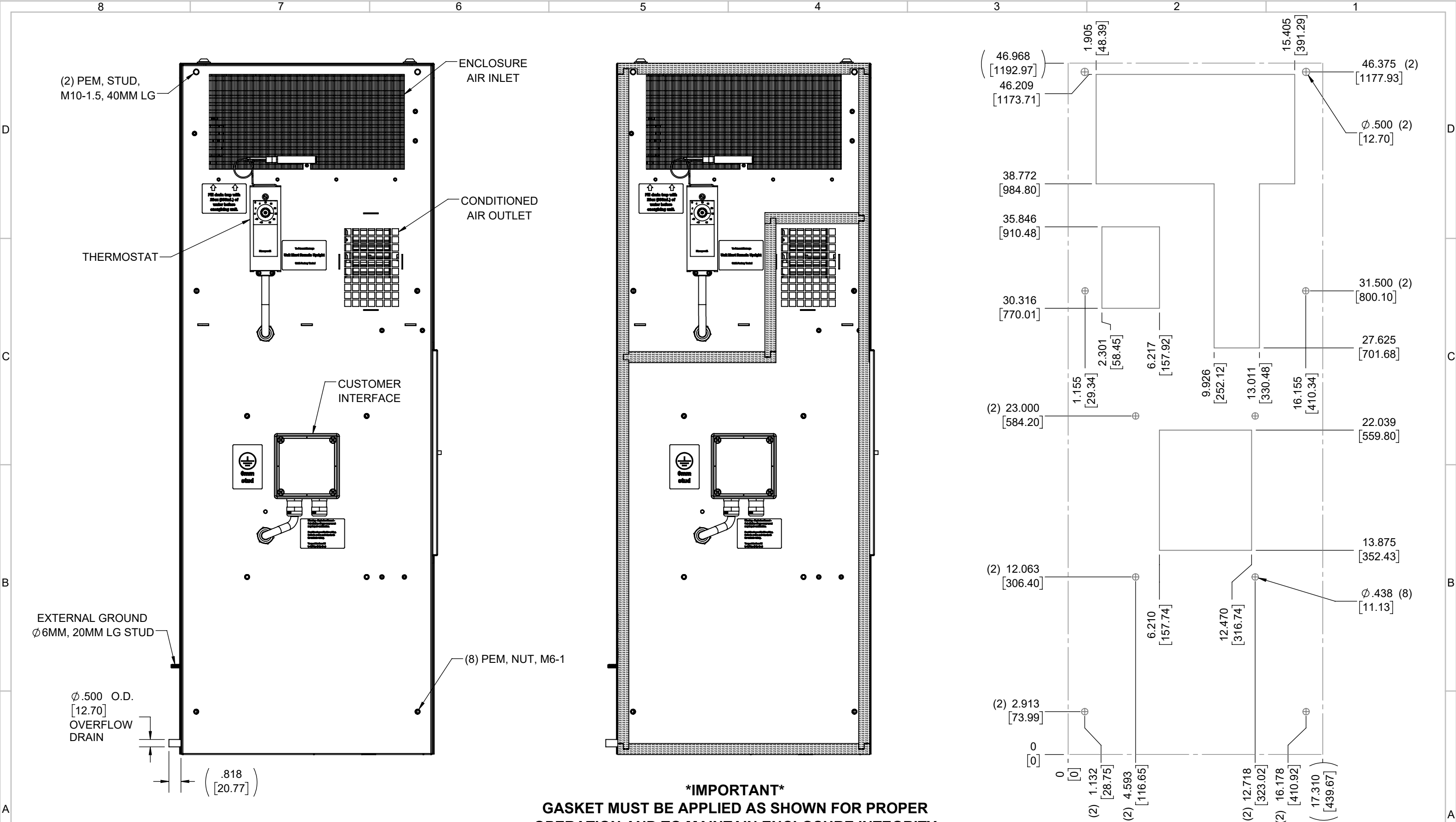


IQ6000EX
CE 0539 II 2 G Ex db eb ib IIB+H2 T4 Gb
NOMINAL COOLING CAPACITY:
6568 BTUH (1926W) @ 140-140°F (60°C-60°C)
MAXIMUM AMPS: 8.69 (1912W) @ 220V/50Hz
MAXIMUM AMPS: 8.69 (1912W) @ 220V/60Hz
MAXIMUM AMPS: 10.47 (2408W) @ 230V/50Hz
MAXIMUM AMPS: 10.47 (2408W) @ 230V/60Hz
MAXIMUM AMPS: 8.57 (2057W) @ 240V/50Hz
MAXIMUM AMPS: 10.31 (2474W) @ 240V/60Hz
MAXIMUM OPERATING TEMPERATURE: 140°F (60°C)
MINIMUM OPERATING TEMPERATURE: -40°F (-40°C)
DIMENSIONS: 46.968" (1193MM) H x 17.310" (440MM) W x 14.968" (380MM) D
WEIGHT: 225 LBS (102KG)
REFRIGERANT CHARGE: R407C 1LB 12OZ (794G)



							ITEM NUMBER N/A		USED ON IQ6000EX		UNLESS OTHERWISE SPECIFIED TOLERANCES X ±.060 XX ±.030 XXX ±.015 FRACTIONAL ±1/16 ANGULAR ±1/2° SURFACE FINISH 63✓ DO NOT SCALE DRAWING DIMENSIONS ARE INCHES		<div>ICE QUBE, INC.</div> <div>THIS IS A PROPRIETARY DOCUMENT. DO NOT REPRODUCE OR DISCLOSE WITHOUT THE EXPRESS WRITTEN PERMISSION OF ICE QUBE, INC.</div> <div>DESCRIPTION</div> <div>IQ6000EX SPEC DRAWING</div> <div>DRAWING NUMBER</div> <div>IQ351990</div> <div>REV</div> <div>A</div>	
							MATERIAL N/A							
							EST WT: lbs							
							DRAWN BY JGG		DATE 8/2/2018					
A	PRODUCTION RELEASE					RCC	8/2/2018							
REV	REVISION					CHG	DATE	APP	DATE	CN #				



IMPORTANT
GASKET MUST BE APPLIED AS SHOWN FOR PROPER OPERATION AND TO MAINTAIN ENCLOSURE INTEGRITY

ITEM NUMBER <i>N/A</i>		USED ON <i>IQ6000EX</i>		UNLESS OTHERWISE SPECIFIED TOLERANCES X ±.060 .XX ±.030 .XXX ±.015 FRACTIONAL ±1/4 ANGULAR ±1/2° SURFACE FINISH 63		ICE QUBE, INC. THIS IS A PROPRIETARY DOCUMENT. DO NOT REPRODUCE OR DISCLOSE WITHOUT THE EXPRESS WRITTEN PERMISSION OF ICE QUBE, INC.	
MATERIAL <i>N/A</i>		SCALE 1:6		DESCRIPTION <i>IQ6000EX SPEC DRAWING</i>		DRAWING NUMBER <i>IQ351990</i>	
EST WT: lbs		DATE 8/2/2018		DO NOT SCALE DRAWING DIMENSIONS ARE INCHES		REV A	
DRAWN BY JGG		SCALE 1:6					