

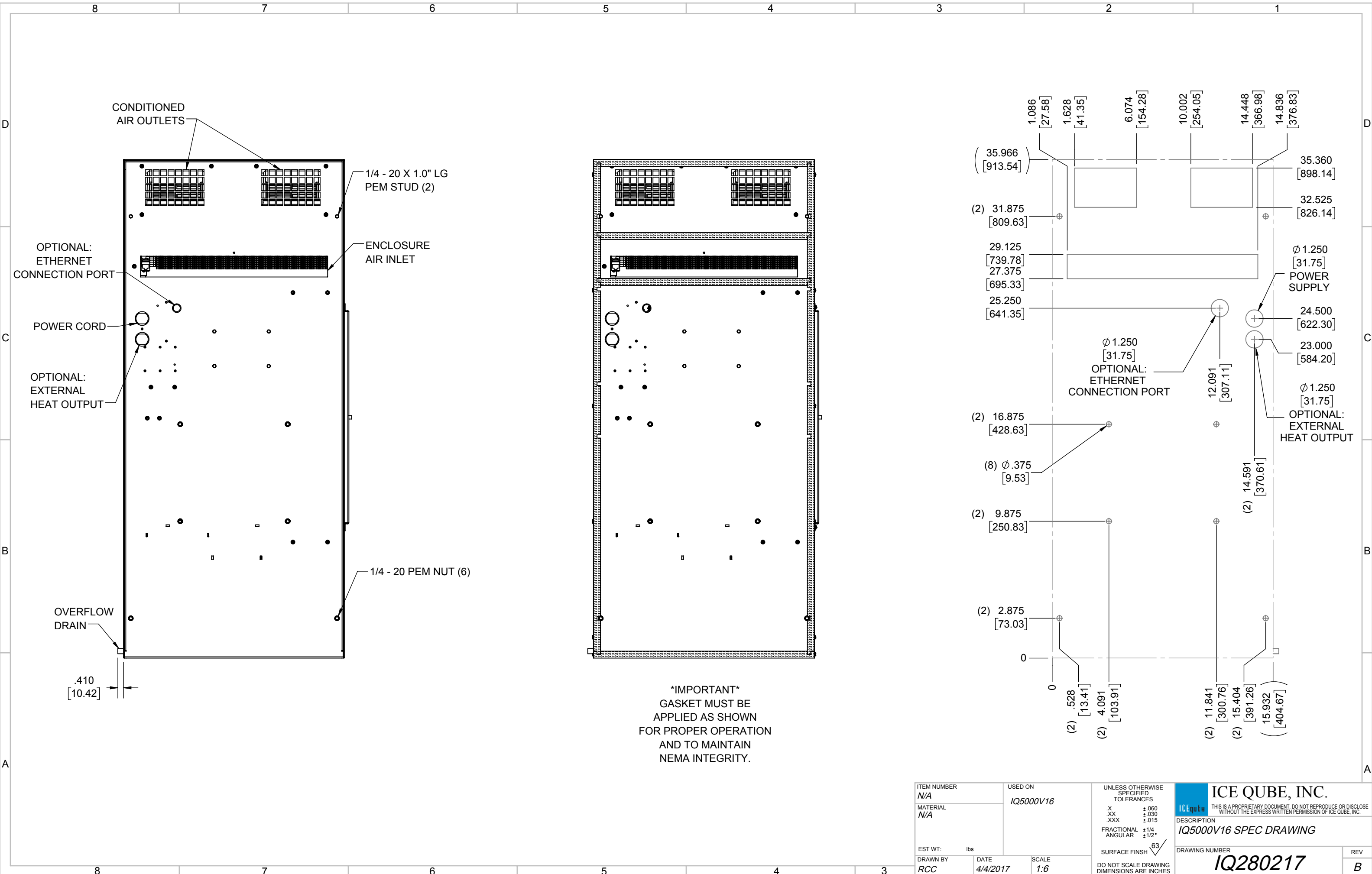
IQ5000V16
 COOLING CAPACITY: 5000 BTUH (1466W) @131°F (55°C)
 MAXIMUM AMPS: 9.7 (1164W) @120V/60HZ
 MAXIMUM AMPS: 5.0/5.5 (1150/1210W) @230/220V 60/50HZ
 MAXIMUM OPERATING TEMP: 131°F (55°C)
 DIMENSIONS: 35.97" (914MM) H X 15.93" (405MM) W X 7.34" (186MM) D
 WEIGHT: 85 LBS (38.6KG)

B	ADDED WATTAGE INFO	RCC	12/15/2017				
A	REDRAWN IN SW	RCC	4/4/2017				
REV	REVISION	CHG	DATE	APP	DATE	CN #	

ITEM NUMBER	N/A	USED ON	IQ5000V16
MATERIAL	N/A		
EST WT:	lbs		
DRAWN BY	RCC	DATE	4/4/2017
		SCALE	1:8

UNLESS OTHERWISE SPECIFIED TOLERANCES	
.X	±.060
.XX	±.030
.XXX	±.015
FRACTIONAL	±1/16
ANGULAR	±1/2°
SURFACE FINISH	63
DO NOT SCALE DRAWING DIMENSIONS ARE INCHES	

ICE QUBE, INC.
THIS IS A PROPRIETARY DOCUMENT. DO NOT REPRODUCE OR DISCLOSE WITHOUT THE EXPRESS WRITTEN PERMISSION OF ICE QUBE, INC.
 DESCRIPTION
IQ5000V16 SPEC DRAWING
 DRAWING NUMBER
IQ280217



IMPORTANT
 GASKET MUST BE
 APPLIED AS SHOWN
 FOR PROPER OPERATION
 AND TO MAINTAIN
 NEMA INTEGRITY.

ITEM NUMBER <i>N/A</i>	USED ON <i>IQ5000V16</i>	UNLESS OTHERWISE SPECIFIED TOLERANCES X ±.060 .XX ±.030 .XXX ±.015 FRACTIONAL ±1/4 ANGULAR ±1/2°	 <small>THIS IS A PROPRIETARY DOCUMENT. DO NOT REPRODUCE OR DISCLOSE WITHOUT THE EXPRESS WRITTEN PERMISSION OF ICE QUBE, INC.</small>
MATERIAL <i>N/A</i>		DESCRIPTION IQ5000V16 SPEC DRAWING	
EST WT: lbs	DATE <i>4/4/2017</i>	SCALE <i>1:6</i>	DRAWING NUMBER IQ280217
DRAWN BY <i>RCC</i>		DO NOT SCALE DRAWING DIMENSIONS ARE INCHES	REV B