

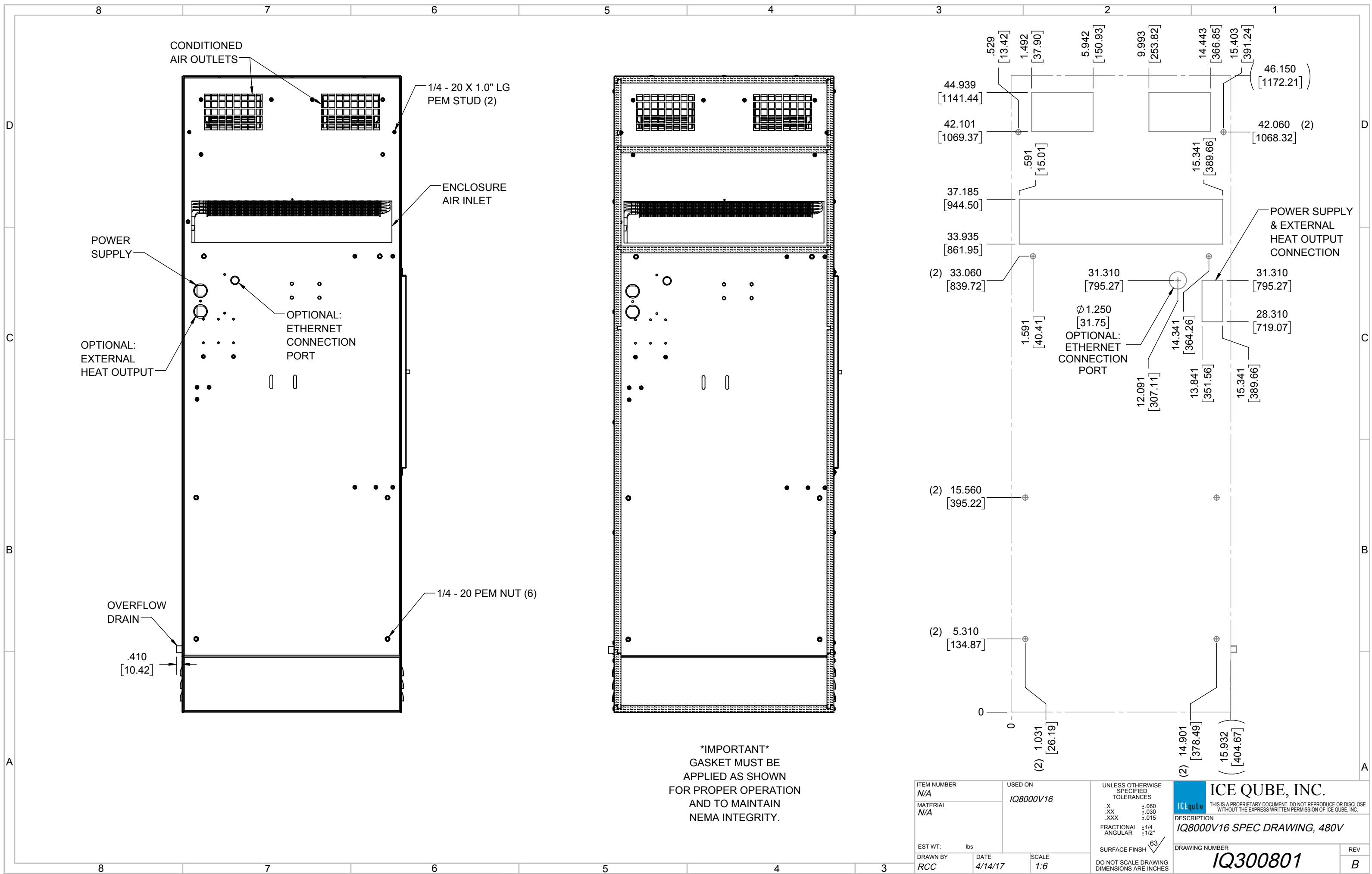
IQ8000V16  
 COOLING CAPACITY: 8000 BTUH (2346W) @131°F (55°C)  
 MAXIMUM AMPS: 3.4/3.7 (1632/1776W) @480V/60/50HZ  
 MAXIMUM OPERATING TEMP: 131°F (55°C)  
 DIMENSIONS: 46.16" (1172MM) H X 15.93" (404MM) W X 10.34" (263MM) D  
 WEIGHT: 130 LBS (59.1KG)

REV	DESCRIPTION	CHG	DATE	APP	DATE	CN #
B	ADDED 50HZ AND WATTAGE INFO	RCC	12/15/2017			
A	REDRAWN IN SW	RCC	4/14/2017			

ITEM NUMBER N/A	USED ON IQ8000V16
MATERIAL N/A	
EST WT: lbs	
DRAWN BY RCC	DATE 4/14/17
	SCALE 1:10

UNLESS OTHERWISE SPECIFIED TOLERANCES	
.X	±.060
.XX	±.030
.XXX	±.015
FRACTIONAL	±1/16
ANGULAR	±1/2°
SURFACE FINISH <sup>63</sup>	
DO NOT SCALE DRAWING DIMENSIONS ARE INCHES	

**ICE QUBE, INC.**  
THIS IS A PROPRIETARY DOCUMENT. DO NOT REPRODUCE OR DISCLOSE WITHOUT THE EXPRESS WRITTEN PERMISSION OF ICE QUBE, INC.  
 DESCRIPTION  
**IQ8000V16 SPEC DRAWING, 480V**  
 DRAWING NUMBER  
**IQ300801**



\*IMPORTANT\*  
 GASKET MUST BE  
 APPLIED AS SHOWN  
 FOR PROPER OPERATION  
 AND TO MAINTAIN  
 NEMA INTEGRITY.

ITEM NUMBER N/A	USED ON IQ8000V16	UNLESS OTHERWISE SPECIFIED TOLERANCES X ±.060 .XX ±.030 .XXX ±.015 FRACTIONAL ±1/4 ANGULAR ±1/2°	 <small>THIS IS A PROPRIETARY DOCUMENT. DO NOT REPRODUCE OR DISCLOSE WITHOUT THE EXPRESS WRITTEN PERMISSION OF ICE QUBE, INC.</small> <b>DESCRIPTION</b> IQ8000V16 SPEC DRAWING, 480V
MATERIAL N/A		SURFACE FINISH 63	
EST WT: lbs		DO NOT SCALE DRAWING DIMENSIONS ARE INCHES	<small>DRAWING NUMBER</small> <b>IQ300801</b>
DRAWN BY RCC	DATE 4/14/17	SCALE 1:6	<small>REV</small> <b>B</b>