

IQ14000V  
 COOLING CAPACITY: 14000 BTUH (4106W) @131°F (55°C)  
 MAXIMUM AMPS: 6.9/7.9 (3312/3792W) @480V/60/50HZ  
 MAXIMUM OPERATING TEMP: 131°F (55°C)  
 DIMENSIONS: 56.00" (1422MM) H X 20.06" (510MM) W X 14.31" (364MM) D  
 WEIGHT: 250 LBS (113.6KG)

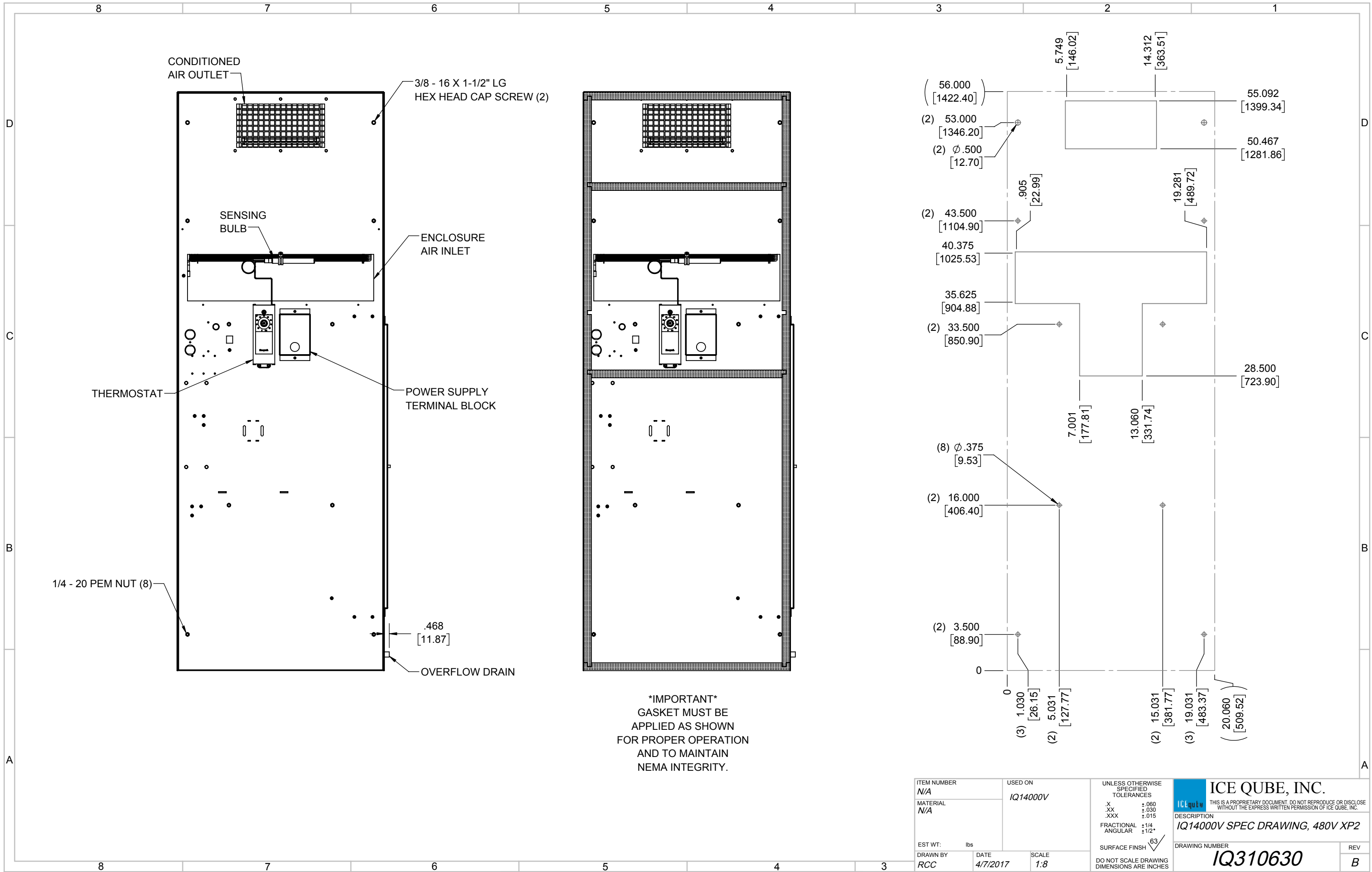
REV	CHG	DATE	APP	DATE	CN #
B		12/27/2017	RCC		
A		4/7/2017	RCC		

ITEM NUMBER	N/A
MATERIAL	N/A
EST WT:	lbs
DRAWN BY	RCC

USED ON	IQ14000V
DATE	4/7/2017
SCALE	1:13

UNLESS OTHERWISE SPECIFIED TOLERANCES	
.X	±.060
.XX	±.030
.XXX	±.015
FRACTIONAL	±1/16
ANGULAR	±1/2°
SURFACE FINISH <sup>63</sup>	
DO NOT SCALE DRAWING DIMENSIONS ARE INCHES	

**ICE QUBE, INC.**  
THIS IS A PROPRIETARY DOCUMENT. DO NOT REPRODUCE OR DISCLOSE WITHOUT THE EXPRESS WRITTEN PERMISSION OF ICE QUBE, INC.  
 DESCRIPTION  
**IQ14000V SPEC DRAWING, 480V XP2**  
 DRAWING NUMBER  
**IQ310630**  
 REV  
**B**



ITEM NUMBER N/A	USED ON IQ14000V	UNLESS OTHERWISE SPECIFIED TOLERANCES X ±.060 .XX ±.030 .XXX ±.015 FRACTIONAL ±1/4 ANGULAR ±1/2°	<p>THIS IS A PROPRIETARY DOCUMENT. DO NOT REPRODUCE OR DISCLOSE WITHOUT THE EXPRESS WRITTEN PERMISSION OF ICE QUBE, INC.</p>
MATERIAL N/A		DESCRIPTION IQ14000V SPEC DRAWING, 480V XP2	
EST WT: lbs		SURFACE FINISH 63	DRAWING NUMBER IQ310630
DRAWN BY RCC	DATE 4/7/2017	SCALE 1:8	REV B