

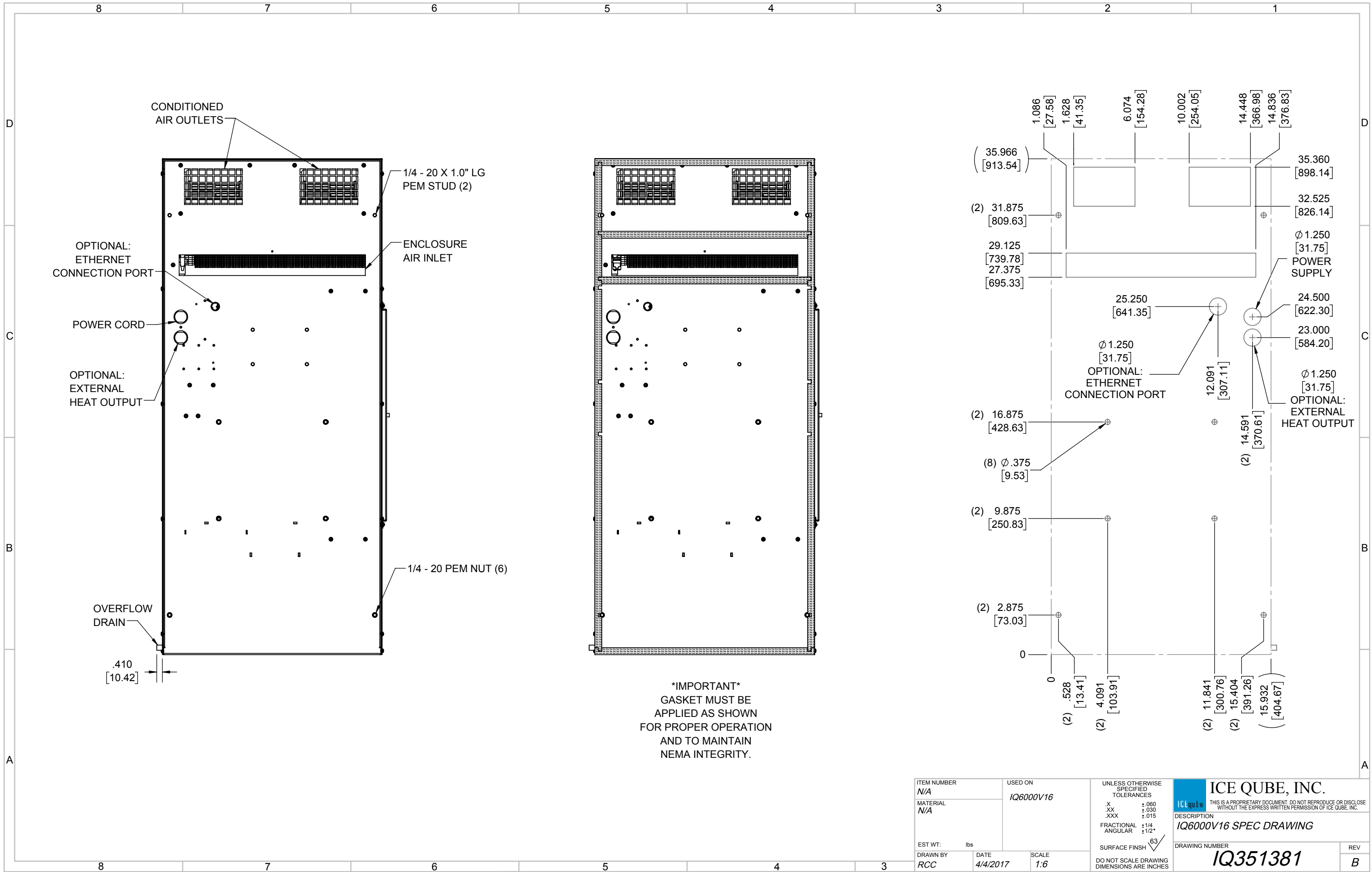
IQ6000V16
 COOLING CAPACITY: 6000 BTUH (1760W) @131°F (55°C)
 MAXIMUM AMPS: 10.5 (1260W) @120V/60HZ
 MAXIMUM AMPS: 5.2/5.8 (1196/1276W) @230/220V 60/50HZ
 MAXIMUM OPERATING TEMP: 131°F (55°C)
 DIMENSIONS: 35.97" (914MM) H X 15.93" (405MM) W X 7.34" (186MM) D
 WEIGHT: 85 LBS (38.6KG)

REV	CHG	DATE	APP	DATE	CN #
B		12/18/2017	RCC		
A		4/4/2017	RCC		

ITEM NUMBER N/A	USED ON IQ6000V16
MATERIAL N/A	
EST WT: lbs	
DRAWN BY RCC	DATE 4/4/2017
	SCALE 1:8

UNLESS OTHERWISE SPECIFIED TOLERANCES	
.X	±.060
.XX	±.030
.XXX	±.015
FRACTIONAL	±1/16
ANGULAR	±1/2°
SURFACE FINISH $\sqrt{63}$	
DO NOT SCALE DRAWING DIMENSIONS ARE INCHES	

ICE QUBE, INC.
THIS IS A PROPRIETARY DOCUMENT. DO NOT REPRODUCE OR DISCLOSE WITHOUT THE EXPRESS WRITTEN PERMISSION OF ICE QUBE, INC.
 DESCRIPTION
IQ6000V16 SPEC DRAWING
 DRAWING NUMBER
IQ351381



ITEM NUMBER N/A	USED ON IQ6000V16	UNLESS OTHERWISE SPECIFIED TOLERANCES X ±.060 .XX ±.030 .XXX ±.015 FRACTIONAL ±1/4 ANGULAR ±1/2°	<p>THIS IS A PROPRIETARY DOCUMENT. DO NOT REPRODUCE OR DISCLOSE WITHOUT THE EXPRESS WRITTEN PERMISSION OF ICE QUBE, INC.</p> <p>DESCRIPTION IQ6000V16 SPEC DRAWING</p>
MATERIAL N/A		SURFACE FINISH 63	
EST WT: lbs	DATE 4/4/2017	SCALE 1:6	DRAWING NUMBER IQ351381
DRAWN BY RCC			REV B