

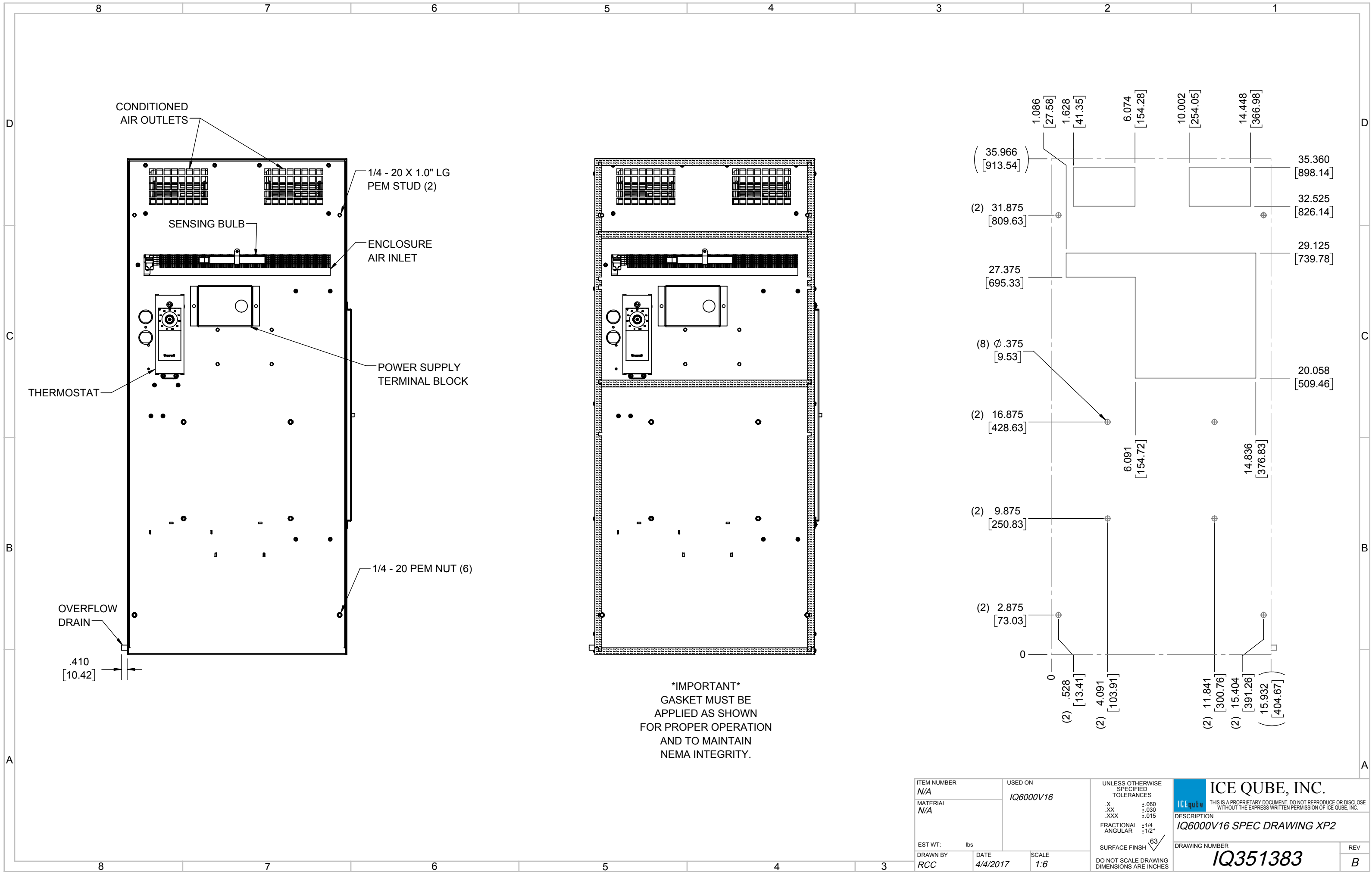
IQ6000V16
 COOLING CAPACITY: 6000 BTUH (1760W) @131°F (55°C)
 MAXIMUM AMPS: 10.5 (1260W) @120V/60HZ
 MAXIMUM AMPS: 5.2/5.8 (1196/1276W) @230/220V 60/50HZ
 MAXIMUM OPERATING TEMP: 131°F (55°C)
 DIMENSIONS: 35.97" (914MM) H X 15.93" (405MM) W X 7.34" (186MM) D
 WEIGHT: 105 LBS (47.7KG)

REV	DESCRIPTION	CHG	DATE	APP	DATE	CN #
B	ADDED WATTAGE INFO	RCC	12/18/2017			
A	REDRAWN IN SW	RCC	4/4/2017			

ITEM NUMBER N/A	USED ON IQ6000V16
MATERIAL N/A	
EST WT: lbs	
DRAWN BY RCC	DATE 4/4/2017
	SCALE 1:9

UNLESS OTHERWISE SPECIFIED TOLERANCES
 .X ±.060
 .XX ±.030
 .XXX ±.015
 FRACTIONAL ±1/16
 ANGULAR ±1/2°
 SURFACE FINISH 63

ICE QUBE, INC.
THIS IS A PROPRIETARY DOCUMENT. DO NOT REPRODUCE OR DISCLOSE WITHOUT THE EXPRESS WRITTEN PERMISSION OF ICE QUBE, INC.
 DESCRIPTION
IQ6000V16 SPEC DRAWING XP2
 DRAWING NUMBER
IQ351383



ITEM NUMBER N/A	USED ON IQ6000V16	UNLESS OTHERWISE SPECIFIED TOLERANCES X ±.060 .XX ±.030 .XXX ±.015 FRACTIONAL ±1/4 ANGULAR ±1/2°	<p>THIS IS A PROPRIETARY DOCUMENT. DO NOT REPRODUCE OR DISCLOSE WITHOUT THE EXPRESS WRITTEN PERMISSION OF ICE QUBE, INC.</p>
MATERIAL N/A		<p>EST WT: lbs</p> <p>DRAWN BY: RCC</p> <p>DATE: 4/4/2017</p> <p>SCALE: 1:6</p> <p>DO NOT SCALE DRAWING DIMENSIONS ARE INCHES</p>	
DESCRIPTION IQ6000V16 SPEC DRAWING XP2			DRAWING NUMBER IQ351383
REV B			