

IQ6000V16
 COOLING CAPACITY: 6000 BTUH (1760W) @131°F (55°C)
 MAXIMUM AMPS: 2.5 (1200W) @480V/60HZ
 MAXIMUM OPERATING TEMP: 131°F (55°C)
 DIMENSIONS: 40.10" (1017MM) H X 15.93" (405MM) W X 7.34" (186MM) D
 WEIGHT: 125 LBS (56.8KG)

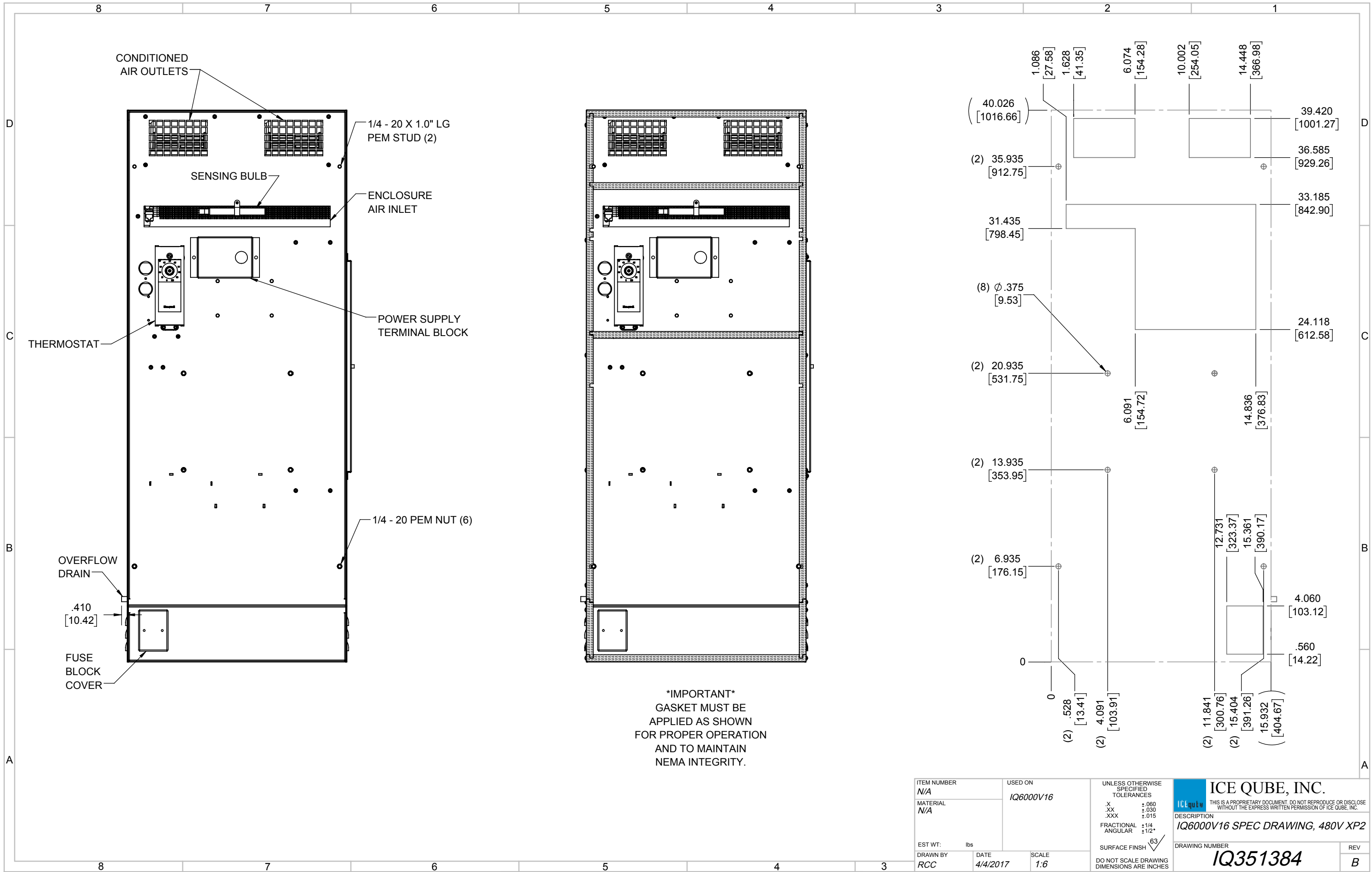
B	ADDED WATTAGE INFO	RCC	12/18/2017				
A	REDRAWN IN SW	RCC	4/4/2017				
REV	REVISION	CHG	DATE	APP	DATE	CN#	

ITEM NUMBER	N/A
MATERIAL	N/A
EST WT:	lbs
DRAWN BY	RCC
DATE	4/4/2017

USED ON	IQ6000V16
SCALE	1:9

UNLESS OTHERWISE SPECIFIED TOLERANCES	
.X	±.060
.XX	±.030
.XXX	±.015
FRACTIONAL	±1/16
ANGULAR	±1/2°
SURFACE FINISH $\sqrt{63}$	
DO NOT SCALE DRAWING DIMENSIONS ARE INCHES	

ICE QUBE, INC.
THIS IS A PROPRIETARY DOCUMENT. DO NOT REPRODUCE OR DISCLOSE WITHOUT THE EXPRESS WRITTEN PERMISSION OF ICE QUBE, INC.
 DESCRIPTION
IQ6000V16 SPEC DRAWING, 480V XP2
 DRAWING NUMBER
IQ351384
 REV
B



IMPORTANT
 GASKET MUST BE
 APPLIED AS SHOWN
 FOR PROPER OPERATION
 AND TO MAINTAIN
 NEMA INTEGRITY.

ITEM NUMBER N/A	USED ON IQ6000V16	UNLESS OTHERWISE SPECIFIED TOLERANCES X ±.060 .XX ±.030 .XXX ±.015 FRACTIONAL ±1/4 ANGULAR ±1/2°	<p>ICE QUBE, INC. <small>THIS IS A PROPRIETARY DOCUMENT. DO NOT REPRODUCE OR DISCLOSE WITHOUT THE EXPRESS WRITTEN PERMISSION OF ICE QUBE, INC.</small></p>
MATERIAL N/A		<p>EST WT: lbs</p> <p>DRAWN BY: RCC</p> <p>DATE: 4/4/2017</p> <p>SCALE: 1:6</p> <p>DO NOT SCALE DRAWING DIMENSIONS ARE INCHES</p>	
DESCRIPTION IQ6000V16 SPEC DRAWING, 480V XP2			DRAWING NUMBER IQ351384
REV B			