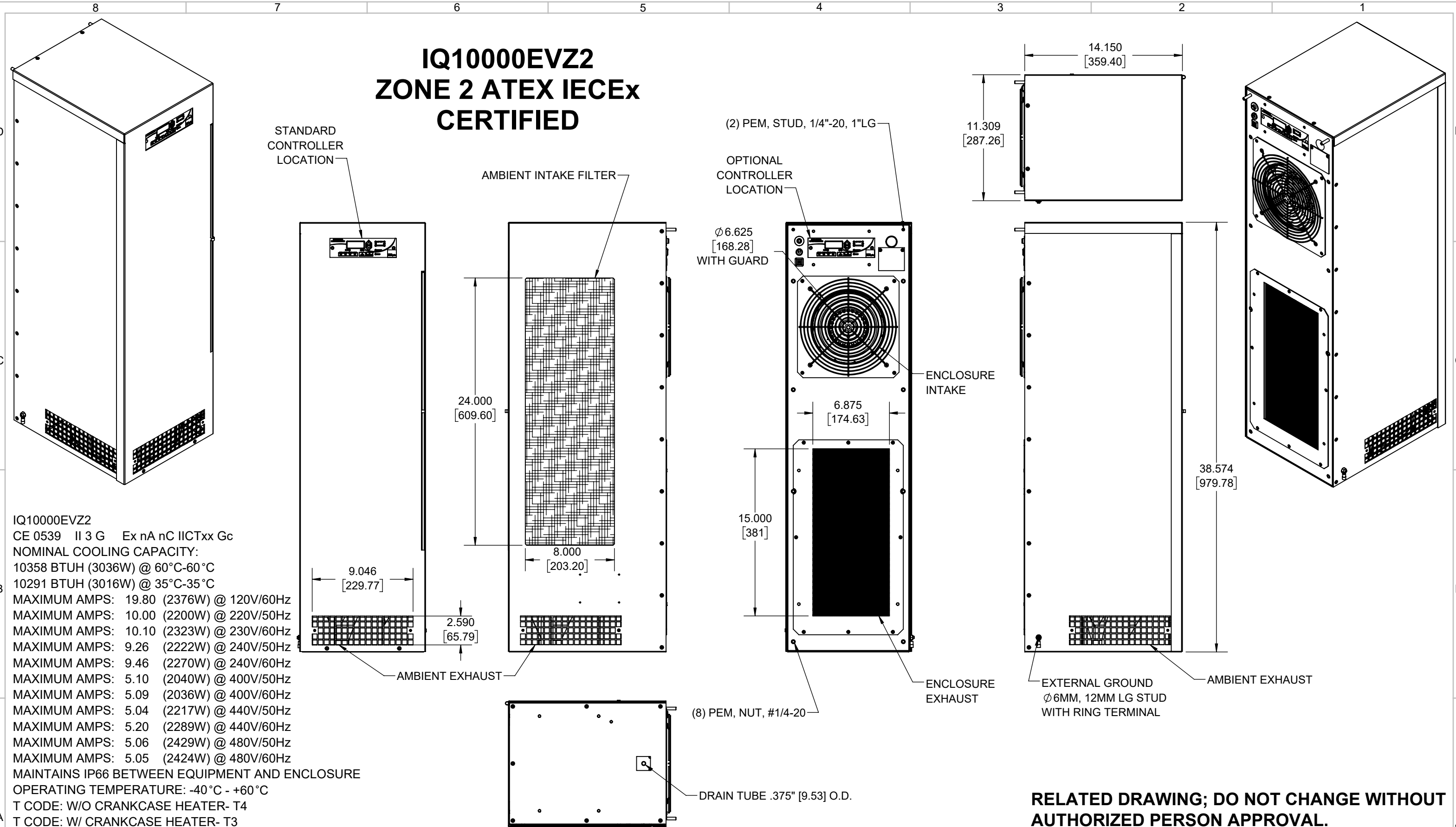


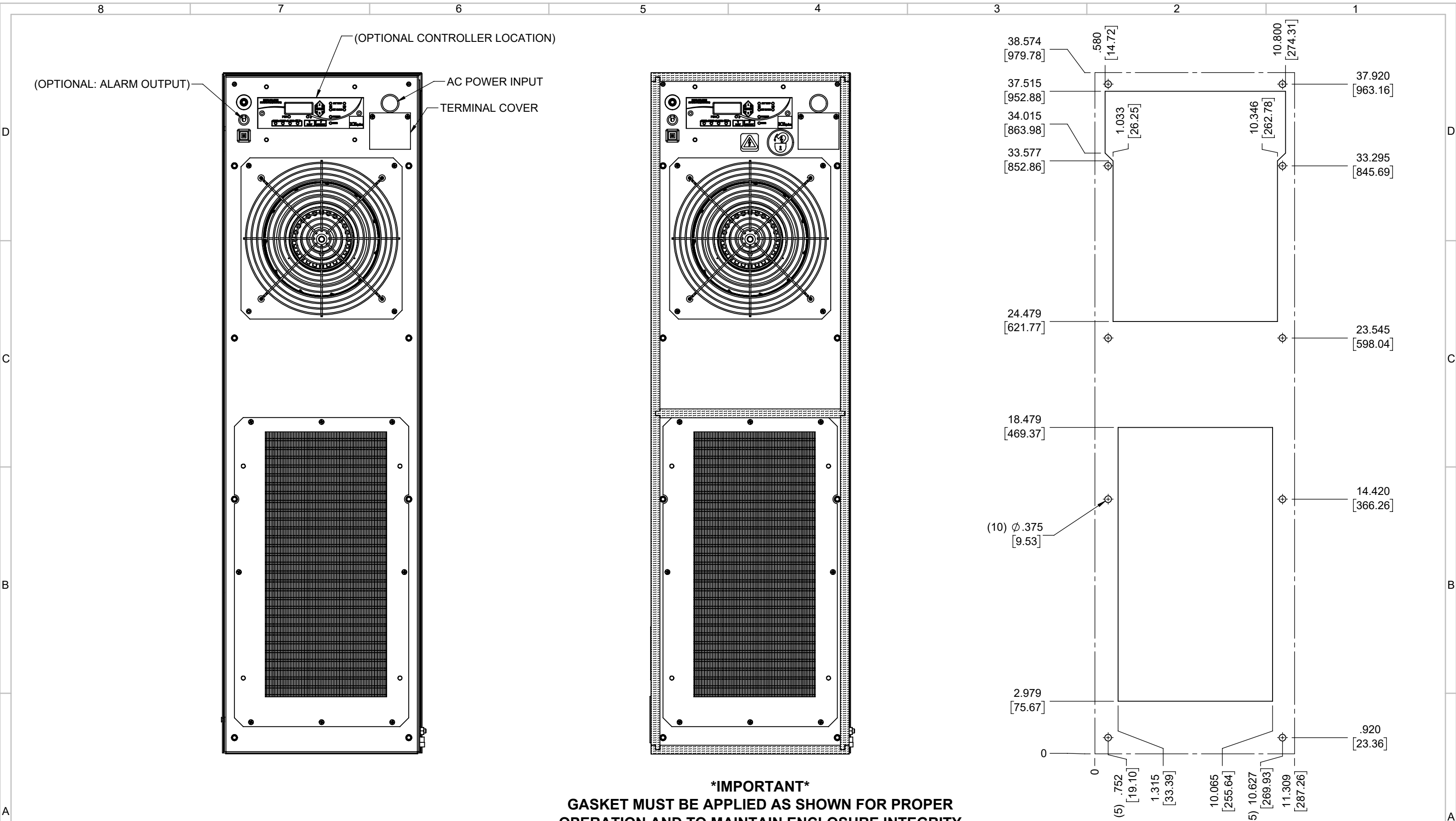
IQ10000EVZ2 ZONE 2 ATEX IECEx CERTIFIED



IQ10000EVZ2
 CE 0539 II 3 G Ex nA nC IICTxx Gc
 NOMINAL COOLING CAPACITY:
 10358 BTUH (3036W) @ 60°C-60°C
 10291 BTUH (3016W) @ 35°C-35°C
 MAXIMUM AMPS: 19.80 (2376W) @ 120V/60Hz
 MAXIMUM AMPS: 10.00 (2200W) @ 220V/50Hz
 MAXIMUM AMPS: 10.10 (2323W) @ 230V/60Hz
 MAXIMUM AMPS: 9.26 (2222W) @ 240V/50Hz
 MAXIMUM AMPS: 9.46 (2270W) @ 240V/60Hz
 MAXIMUM AMPS: 5.10 (2040W) @ 400V/50Hz
 MAXIMUM AMPS: 5.09 (2036W) @ 400V/60Hz
 MAXIMUM AMPS: 5.04 (2217W) @ 440V/50Hz
 MAXIMUM AMPS: 5.20 (2289W) @ 440V/60Hz
 MAXIMUM AMPS: 5.06 (2429W) @ 480V/50Hz
 MAXIMUM AMPS: 5.05 (2424W) @ 480V/60Hz
 MAINTAINS IP66 BETWEEN EQUIPMENT AND ENCLOSURE
 OPERATING TEMPERATURE: -40°C - +60°C
 T CODE: W/O CRANKCASE HEATER- T4
 T CODE: W/ CRANKCASE HEATER- T3
 DIMENSIONS: 38.584" (980MM) H x 11.309" (287MM) W x 14.150" (359MM) D
 WEIGHT: 126 LBS (57.2KG) @ 120/220/230/240V
 WEIGHT: 150 LBS (68.0KG) @ 400/440/480V
 REFRIGERANT CHARGE-R407C:
 120V- 2LB 7OZ (1106G)
 220/230/240V-400/440/480V- 2LB 4OZ (1021G)

**RELATED DRAWING; DO NOT CHANGE WITHOUT
AUTHORIZED PERSON APPROVAL.**

ITEM NUMBER N/A	USED ON IQ10000EVZ2	UNLESS OTHERWISE SPECIFIED TOLERANCES X ±.060 .XX ±.030 .XXX ±.015 FRACTIONAL ±1/16 ANGULAR ±1/2°	<p style="font-size: small;">THIS IS A PROPRIETARY DOCUMENT. DO NOT REPRODUCE OR DISCLOSE WITHOUT THE EXPRESS WRITTEN PERMISSION OF ICE QUBE, INC.</p>	
MATERIAL N/A				DESCRIPTION IQ10000EVZ2 ZONE 2 ATEX IECEx SPEC DRAWING DRAWING NUMBER IQ351312
EST WT: lbs	DRAWN BY ART	DATE 1/19/2017	SCALE 1:8	DO NOT SCALE DRAWING DIMENSIONS ARE INCHES
C	ADDED CFM, dBA, 240V AND 440V 50/60HZ, AND CLEARANCE INFO	RCC	4/26/2018	JGG
B	ADDED METRIC VALUES	ART	1/10/2018	JGG
REV	REVISION	CHG	DATE	APP



IMPORTANT
GASKET MUST BE APPLIED AS SHOWN FOR PROPER OPERATION AND TO MAINTAIN ENCLOSURE INTEGRITY

EVAP. OUTLET \approx 510 CFM
 COND. OUTLET \approx 800 CFM
 SOUND LEVEL @5FT FROM UNIT @ A HT. OF 3FT = 68 dBA
 SOUND LEVEL @2FT FROM UNIT @ A HT. OF 5FT = 70 dBA
 CONDENSER INLET MIN. CLEARANCE 3.00"

ITEM NUMBER N/A	USED ON IQ10000EVZ2	UNLESS OTHERWISE SPECIFIED TOLERANCES X \pm .060 XX \pm .030 XXX \pm .015	 <small>THIS IS A PROPRIETARY DOCUMENT. DO NOT REPRODUCE OR DISCLOSE WITHOUT THE EXPRESS WRITTEN PERMISSION OF ICE QUBE, INC.</small>
MATERIAL N/A		FRACTIONAL \pm 1/4 ANGULAR \pm 1/2°	
EST WT: lbs		SURFACE FINISH 63	DESCRIPTION IQ10000EVZ2 ZONE 2 ATEX ICEEx SPEC DRAWING
DRAWN BY ART	DATE 1/19/2017	SCALE 1:5	DRAWING NUMBER IQ351312
		DO NOT SCALE DRAWING DIMENSIONS ARE INCHES	REV C