

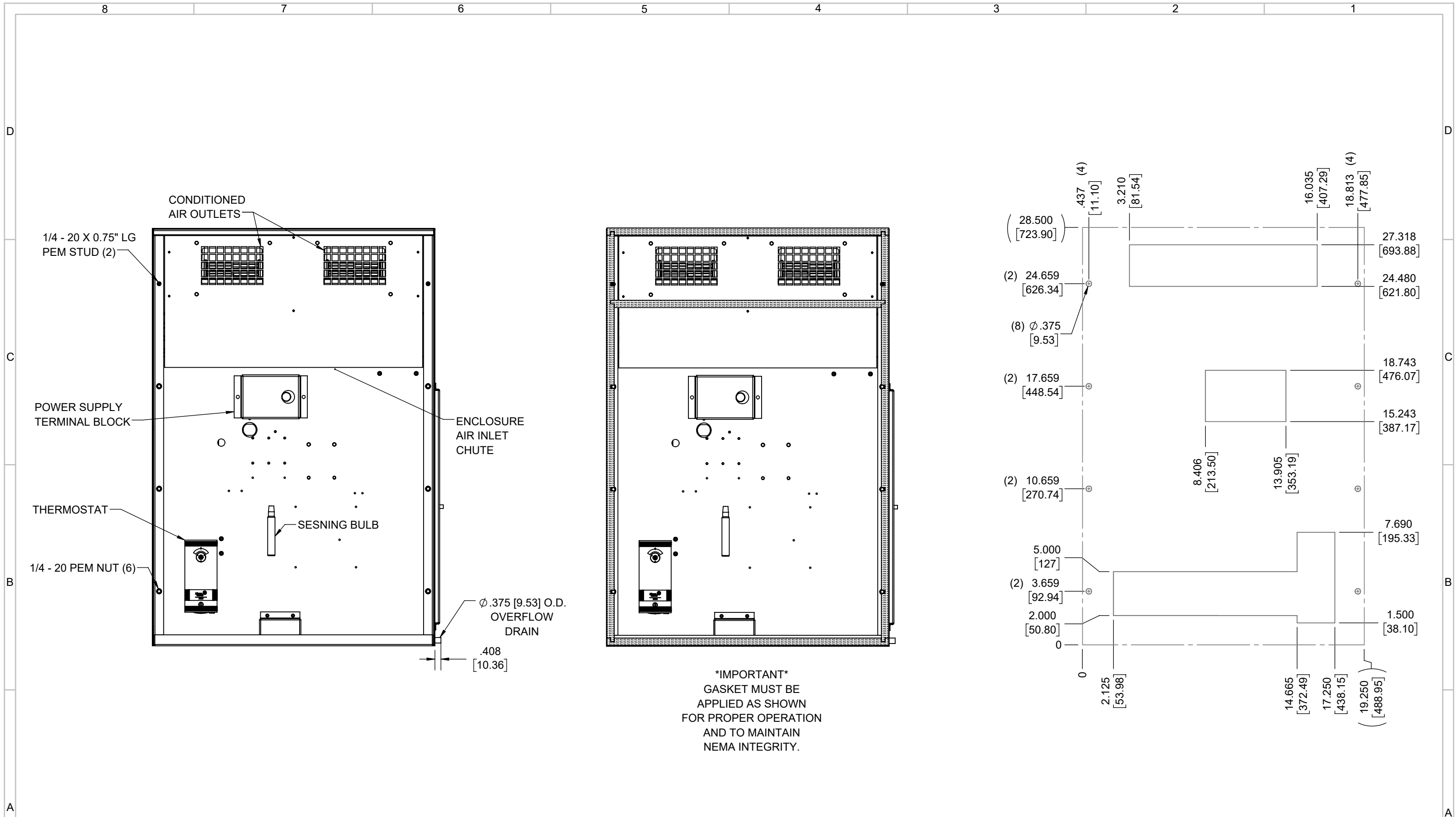
IQ3500V  
 COOLING CAPACITY: 3500 BTUH (1026W) @131°F (55°C)  
 MAXIMUM AMPS: 9.3 (1116W) @120V/60HZ  
 MAXIMUM AMPS: 4.9/5.4 (1127/1188W) @230/220V 60/50HZ  
 MAXIMUM OPERATING TEMP: 131°F (55°C)  
 MINIMUM OPERATING TEMP: -4°F (-20°C)  
 DIMENSIONS: 28.50" (724MM) H X 19.31" (490MM) W X 6.41" (163MM) D  
 WEIGHT: 104 LBS (47.3KG)

REV	REVISION	CHG	DATE	APP	DATE	CN #
D	CHANGED THERMOSTAT DIMENSIONS	NAT	2/15/2021			ECN-1434
C	ADDED CFM, dBA, AND CLEARANCE INFO	RCC	3/29/2018			1351
B	ADDED WATTAGE INFO	RCC	1/3/2018			
A	REDRAWN IN SW	RCC	4/13/2017			

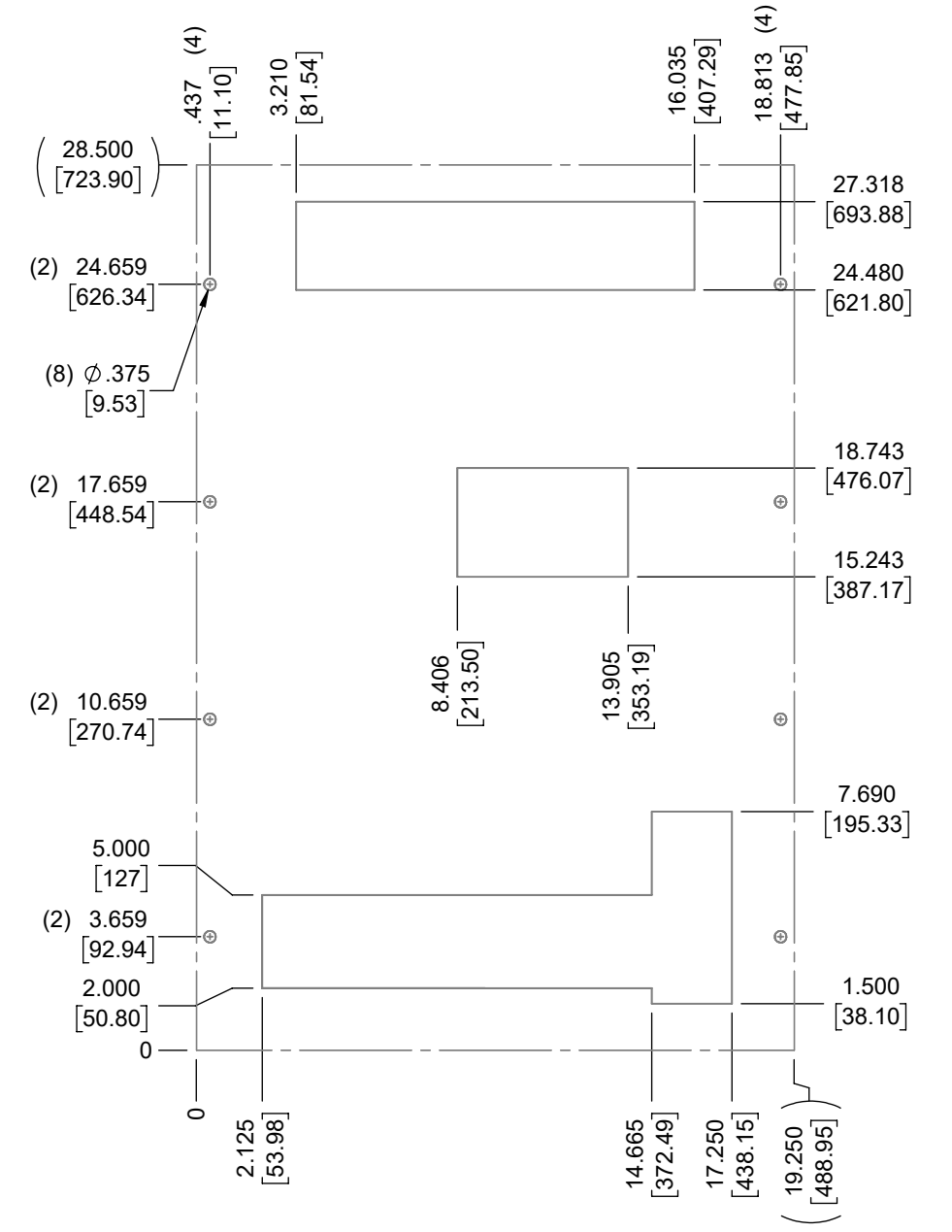
ITEM NUMBER	N/A	USED ON	IQ3500V
MATERIAL	N/A		
EST WT:	lbs		
DRAWN BY	RCC	DATE	4/13/2017
		SCALE	1:7

UNLESS OTHERWISE SPECIFIED TOLERANCES	
.X	±.060
.XX	±.030
.XXX	±.015
FRACTIONAL	±1/16
ANGULAR	±1/2°
SURFACE FINISH 63	
DO NOT SCALE DRAWING DIMENSIONS ARE INCHES	

**ICE QUBE, INC.**  
THIS IS A PROPRIETARY DOCUMENT. DO NOT REPRODUCE OR DISCLOSE WITHOUT THE EXPRESS WRITTEN PERMISSION OF ICE QUBE, INC.  
 DESCRIPTION  
**IQ3500V SPEC DRAWING XP2**  
 DRAWING NUMBER  
**IQ351426**  
 REV  
**D**



**\*IMPORTANT\***  
 GASKET MUST BE  
 APPLIED AS SHOWN  
 FOR PROPER OPERATION  
 AND TO MAINTAIN  
 NEMA INTEGRITY.



EVAP. OUTLET ≈ 236 CFM  
 COND. OUTLET ≈ 236 CFM  
 SOUND LEVEL @5FT FROM UNIT @ A HT. OF 3FT = 55 dBA  
 SOUND LEVEL @2FT FROM UNIT @ A HT. OF 5FT = 55 dBA  
 CONDENSER INLET MIN. CLEARANCE 2.04"

ITEM NUMBER N/A	USED ON IQ3500V	UNLESS OTHERWISE SPECIFIED TOLERANCES X ±.060 .XX ±.030 .XXX ±.015 FRACTIONAL ±1/4 ANGULAR ±1/2°	<b>ICE QUBE, INC.</b> <small>THIS IS A PROPRIETARY DOCUMENT. DO NOT REPRODUCE OR DISCLOSE WITHOUT THE EXPRESS WRITTEN PERMISSION OF ICE QUBE, INC.</small> DESCRIPTION <b>IQ3500V SPEC DRAWING XP2</b>
MATERIAL N/A		SURFACE FINISH 63	
EST WT: lbs		DO NOT SCALE DRAWING DIMENSIONS ARE INCHES	DRAWING NUMBER <b>IQ351426</b>
DRAWN BY RCC	DATE 4/13/2017	SCALE 1:6	REV D